

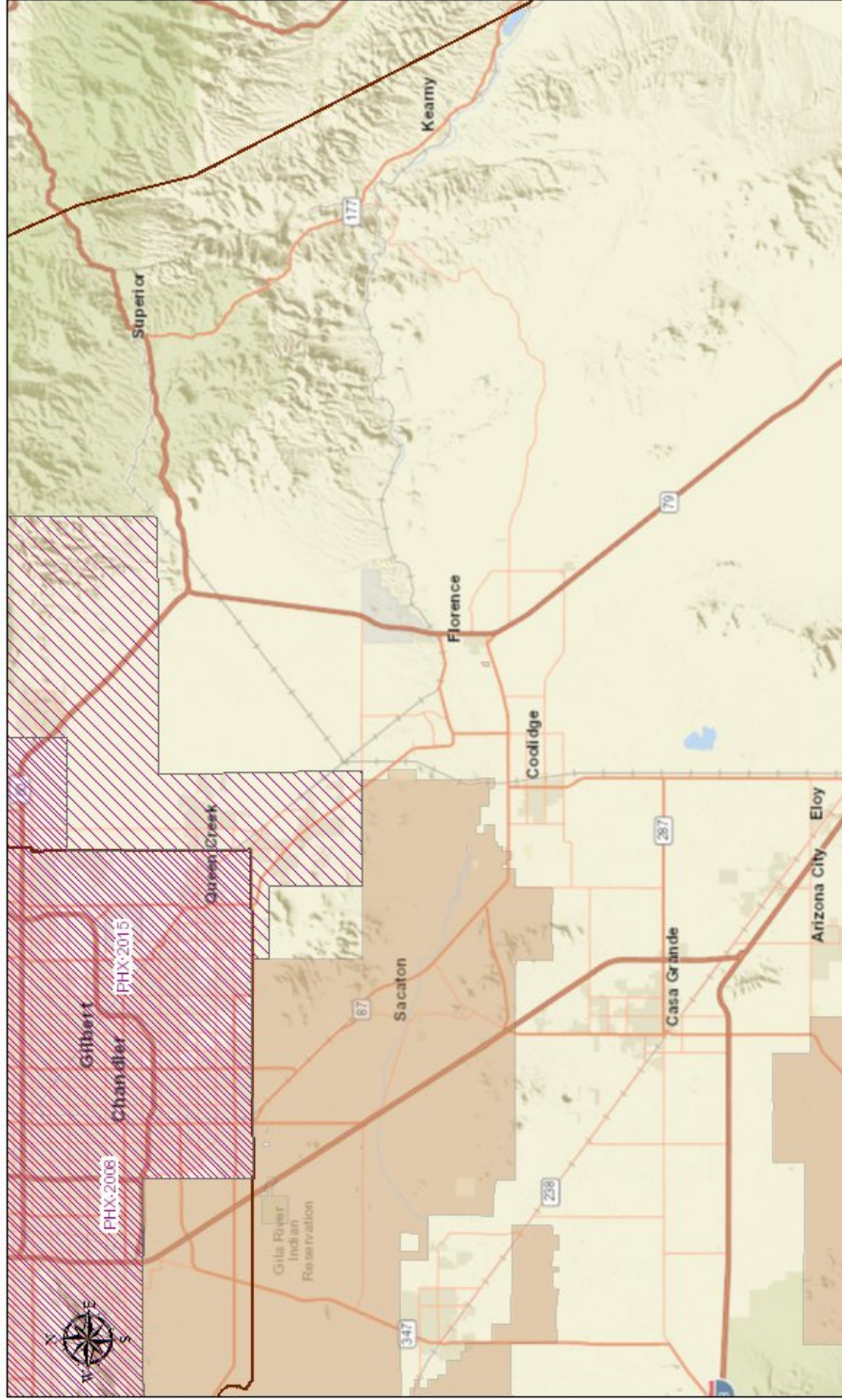
Appendix F. Air Quality Information

This page is intentionally left blank.

Air Quality Information

This appendix contains maps from the Arizona Department of Environmental Quality (2018) that show the ozone nonattainment, particulate matter (PM₁₀) nonattainment, and carbon monoxide maintenance areas that overlap the study area.

Ozone



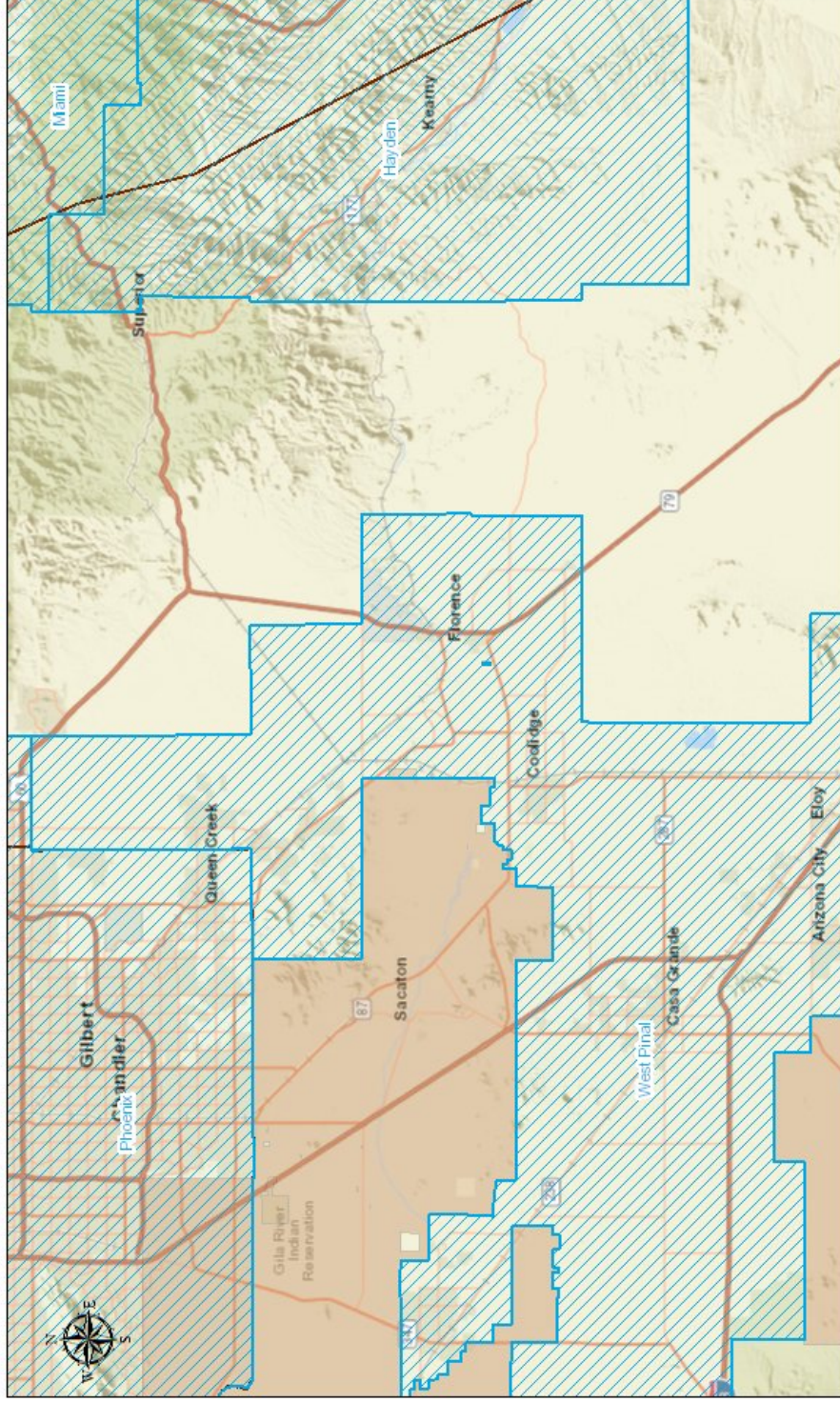
November 27, 2018

- Ozone (O3) - Nonattainment
- YUMA
- PHX 2008
- PHX 2015
- Counties
- Native American Lands

The Arizona Department of Environmental Quality has compiled this map as a service to our customers using information from various sources. ADEQ cannot ensure that the information is accurate, current or complete. Neither the information presented nor the maps themselves are official documents.

ADEQ: Arizona Department of Environmental Quality
Sources: Esri, HERE, Garmin, USGS, Intermap, INCREMENT P, NRCan, Esri Japan, METI, Esri China (Hong Kong), Esri Korea, Esri (Thailand), NGCC, © OpenStreetMap contributors, and the GIS User Community

PM10 Nonattainment



November 27, 2018

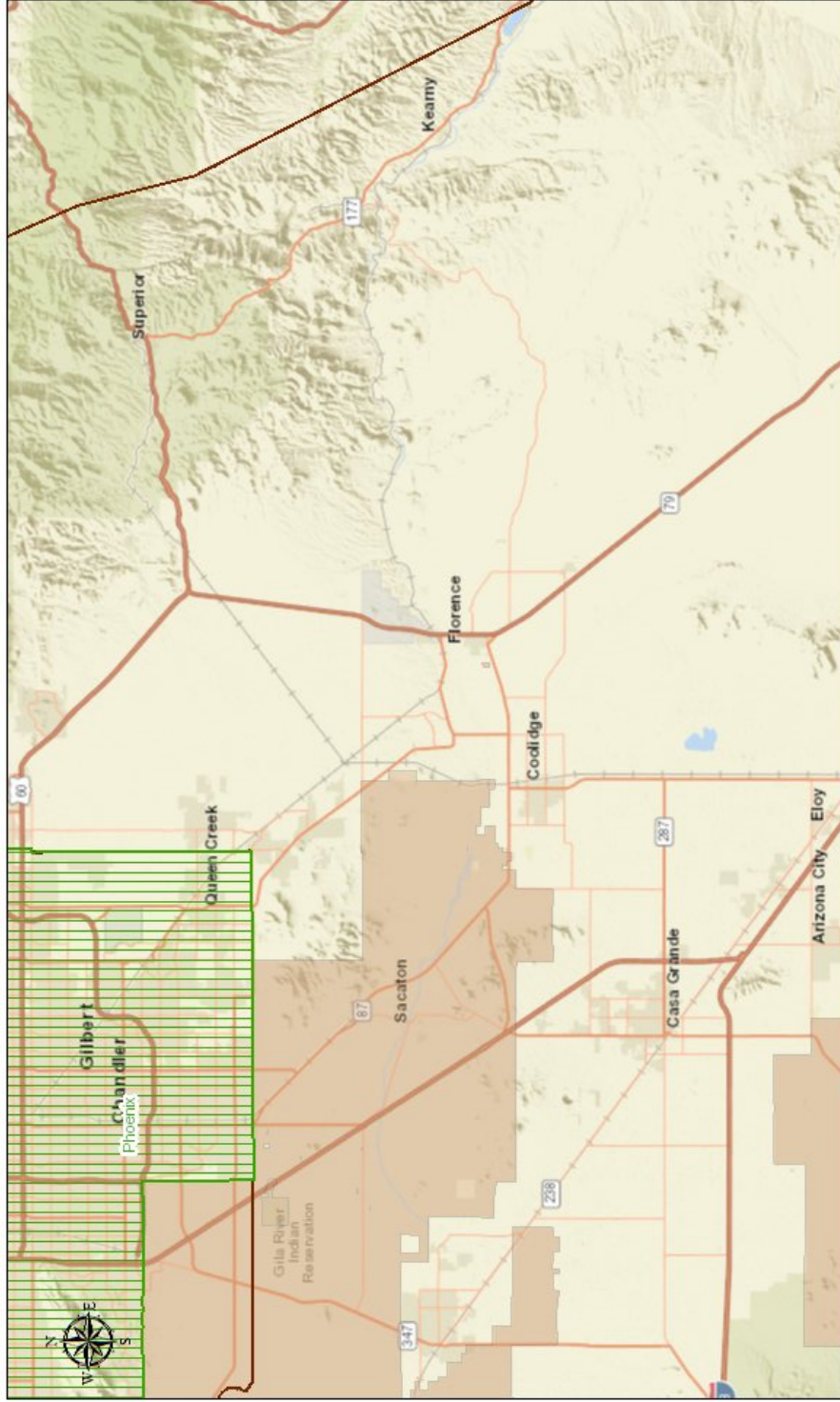
1:577,791

- Counties
- Native American Lands

The Arizona Department of Environmental Quality has compiled this map as a service to our customers using information from various sources. ADEQ cannot ensure that the information is accurate, current or complete. Neither the information presented nor the maps themselves are official documents.

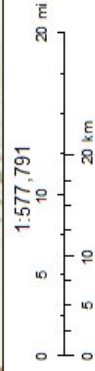
ADEQ: Arizona Department of Environmental Quality
Sources: Esri, HERE, Garmin, USGS, Intermap, INCREMENT P, NRCan, Esri Japan, METI, Esri China (Hong Kong), Esri Korea, Esri (Thailand), NGCC, © OpenStreetMap contributors, and the GIS User Community

Carbon Monoxide



November 27, 2018

- Counties
- Native American Lands



The Arizona Department of Environmental Quality has compiled this map as a service to our customers using information from various sources. ADEQ cannot ensure that the information is accurate, current or complete. Neither the information presented nor the maps themselves are official documents.

ADEQ: Arizona Department of Environmental Quality
 Sources: Esri, HERE, Garmin, USGS, Intermap, INCREMENT P, NRCan, Esri Japan, METI, Esri China (Hong Kong), Esri Korea, Esri (Thailand), NGCC, © OpenStreetMap contributors, and the GIS User Community