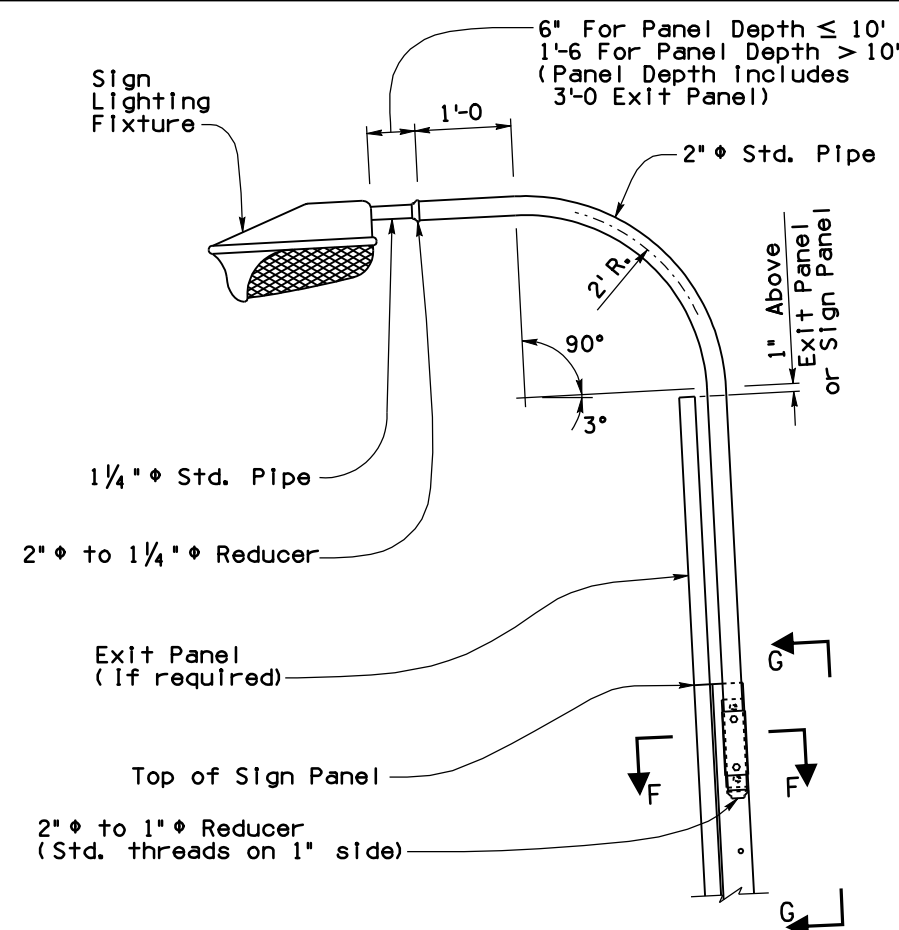
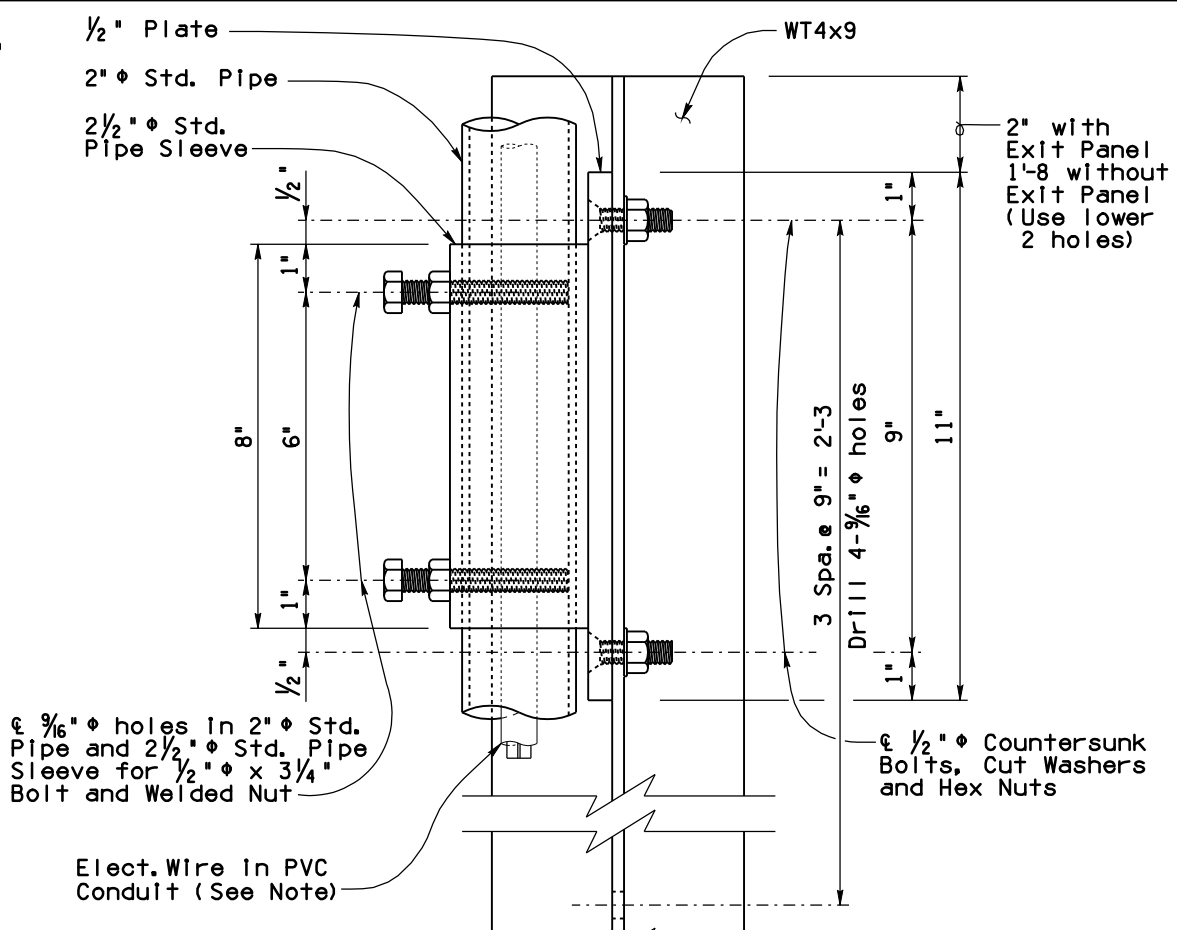


Note to Designer:  
The information presented in this Standard Drawing has been prepared in accordance with recognized engineering principles and is for general use. It should not be used for specific application without competent professional examination and verification of its suitability and applicability by a licensed professional engineer. Contents within the inner border line shall not be altered.

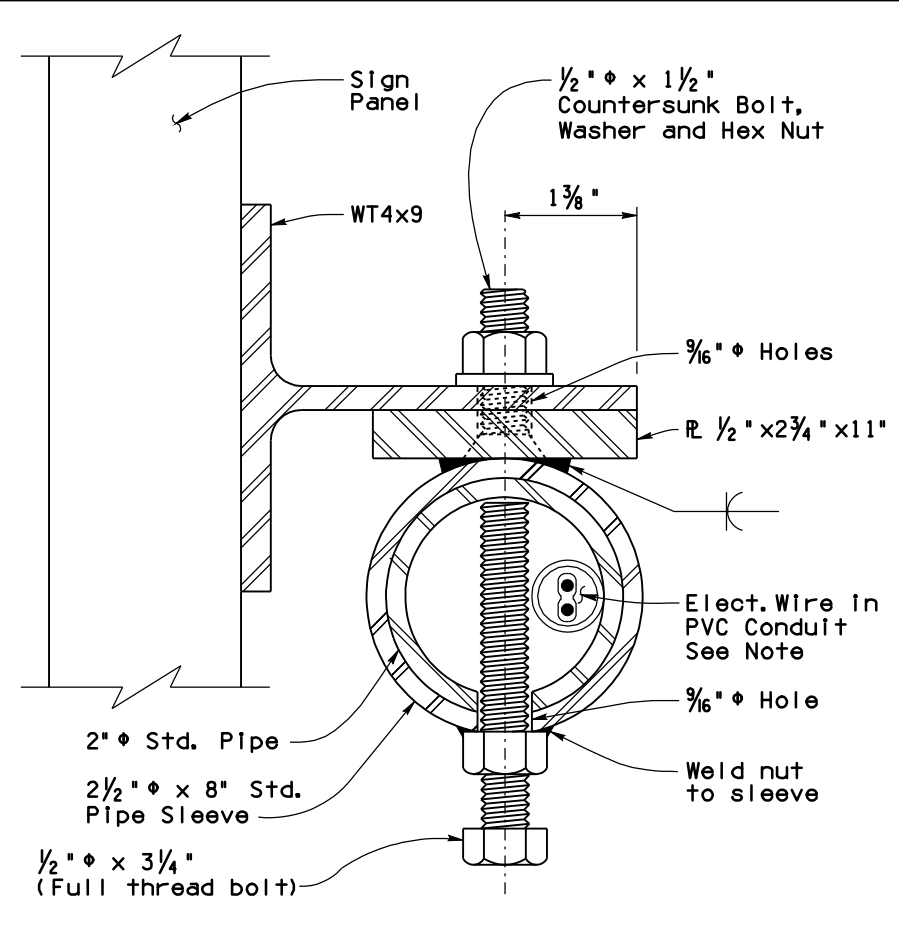


SIDE VIEW

OVERHEAD LIGHT SUPPORT MOUNTING DETAIL

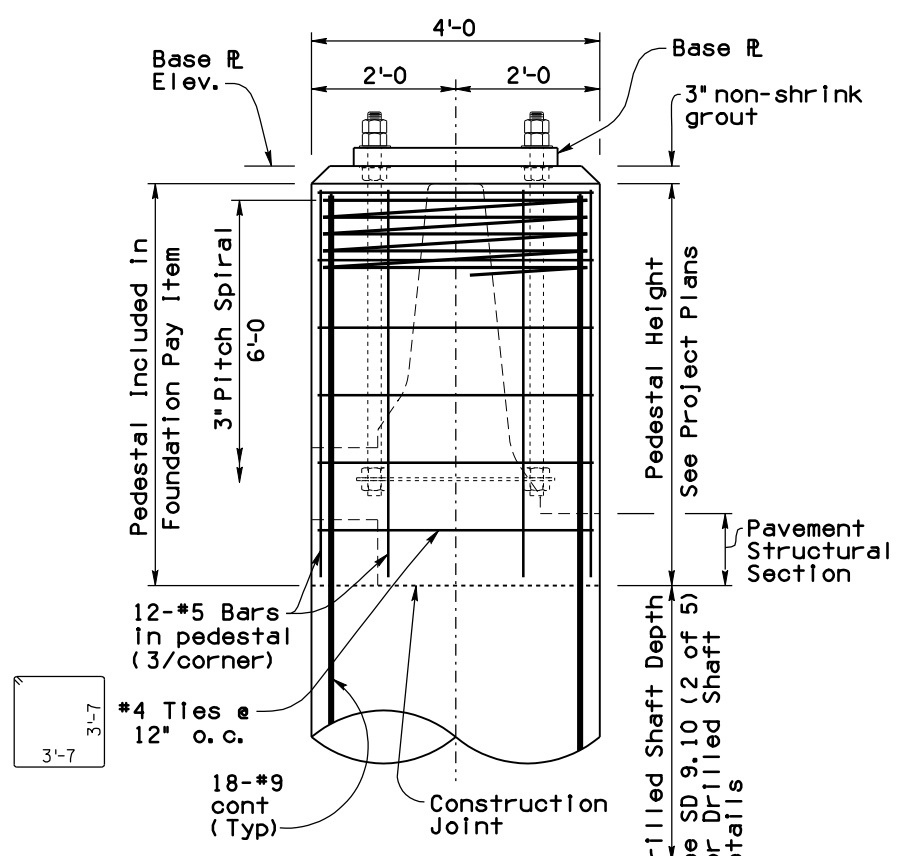


ELEVATION G-G

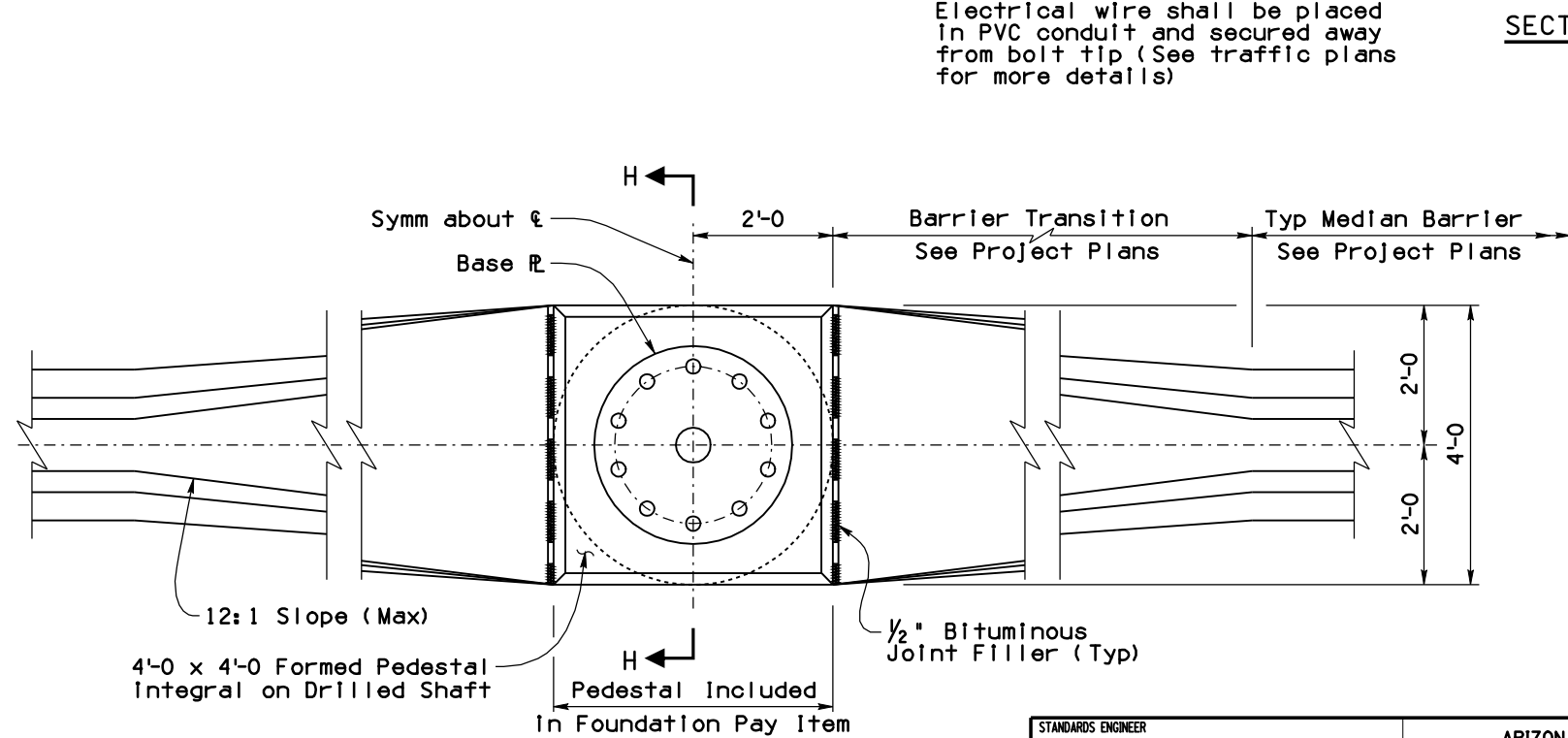


SECTION F-F

Note:  
Electrical wire shall be placed in PVC conduit and secured away from bolt tip (See traffic plans for more details)



SECTION H-H



PLAN

TUBULAR POST ON BARRIER PEDESTAL

STANDARDS ENGINEER  
**A. ALZUBI**  
RECOMMENDED FOR APPROVAL  
GROUP MANAGER  
**D. EBERHART**  
APPROVED  
STANDARDS COMMITTEE APPROVED FOR DISTRIBUTION DATE 04/19

ARIZONA DEPARTMENT OF TRANSPORTATION  
INFRASTRUCTURE DELIVERY AND OPERATIONS DIVISION  
BRIDGE GROUP STANDARD DRAWING

TUBULAR SIGN STRUCTURES  
TUBULAR CANTILEVER  
LIGHT SUPPORT DETAILS  
DRAWING NO.  
SD 9.10  
(5 of 5)

PRIOR DISTRIBUTION DATE 03/11