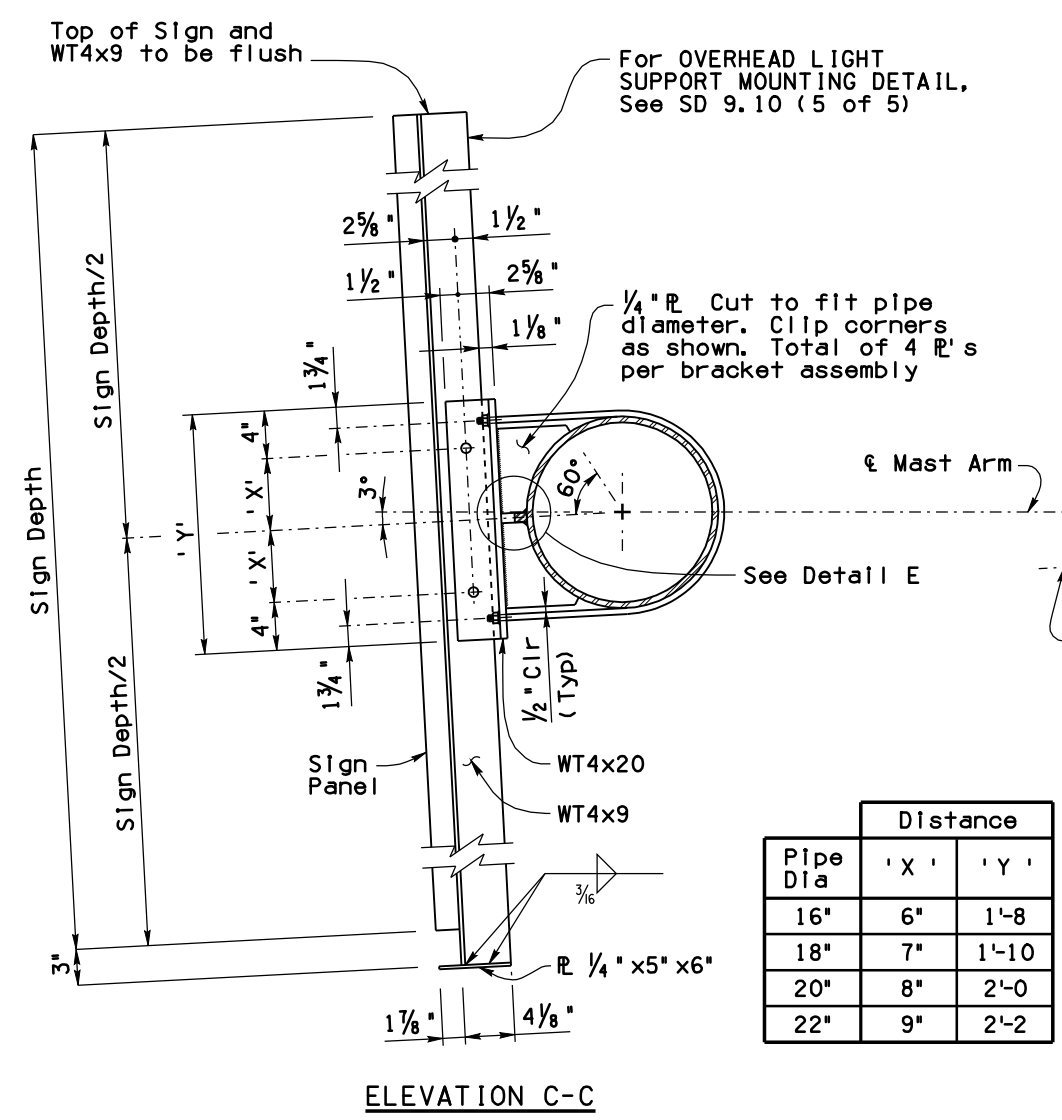
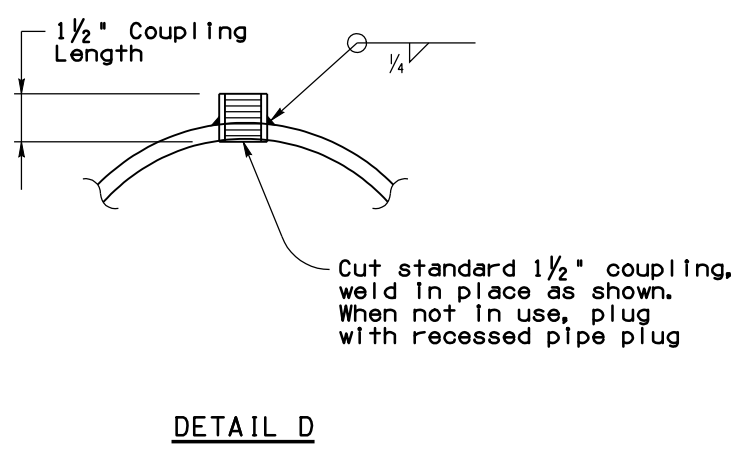
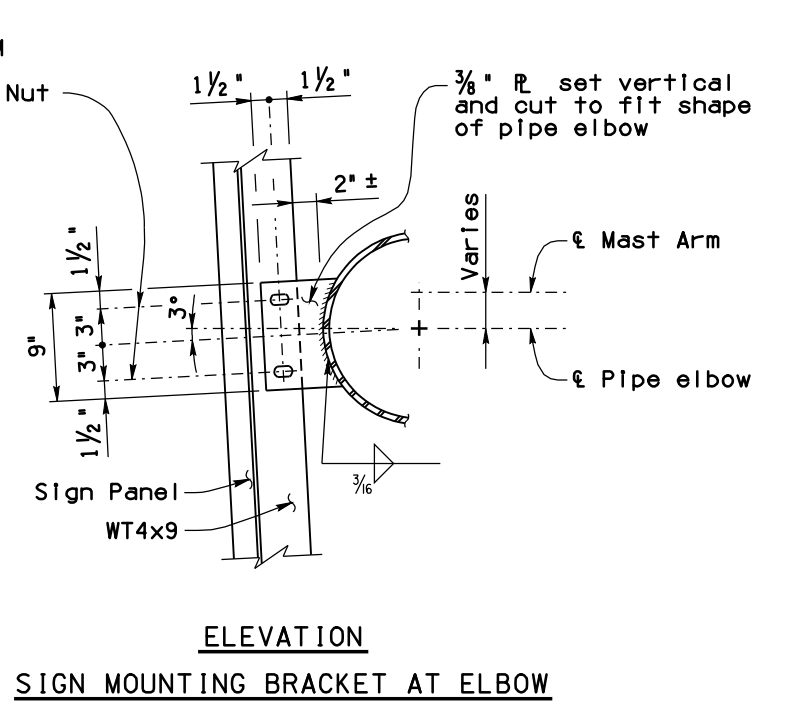
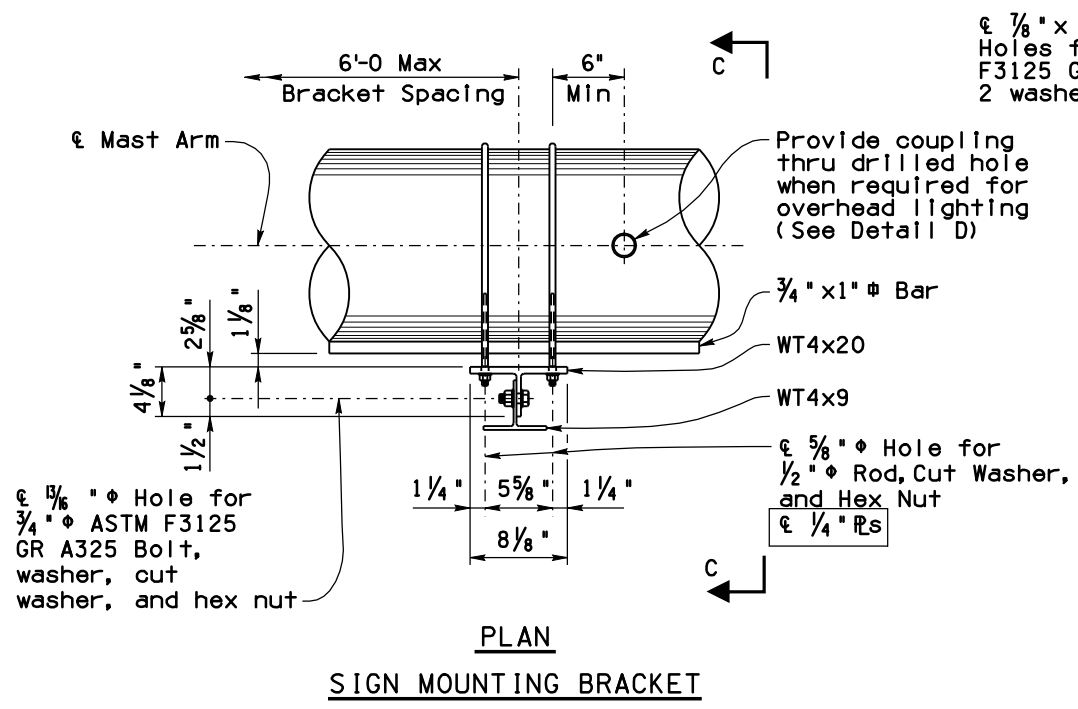
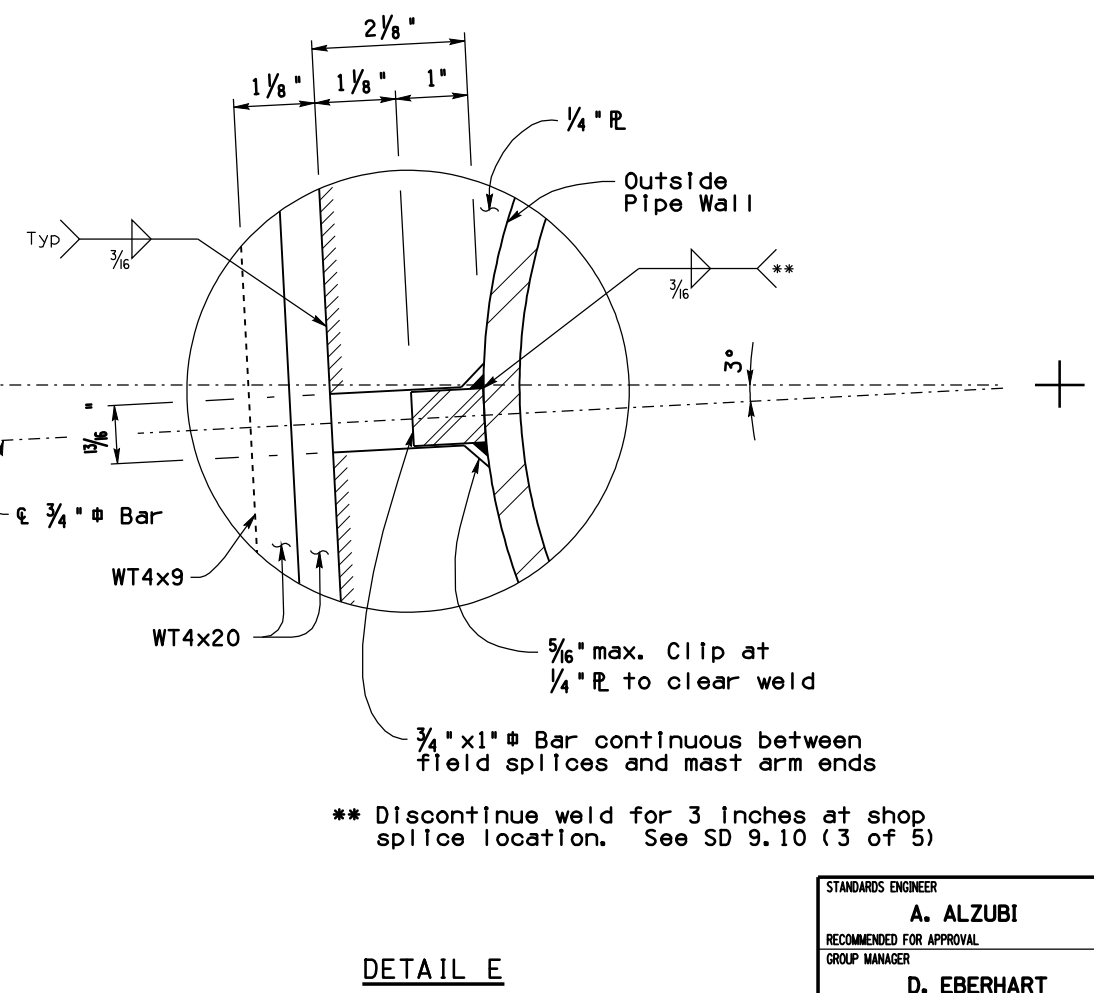


Note to Designer: The information presented in this Standard Drawing has been prepared in accordance with recognized engineering principles and is for general use. It should not be used for specific application without competent professional examination and verification of its suitability and applicability by a licensed professional engineer. Contents within the inner border line shall not be altered.

PRIOR DISTRIBUTION DATE 03/11



Pipe Dia	Distance	
	'X'	'Y'
16"	6"	1'-8"
18"	7"	1'-10"
20"	8"	2'-0"
22"	9"	2'-2"



STANDARDS ENGINEER  
**A. ALZUBI**  
 RECOMMENDED FOR APPROVAL  
 GROUP MANAGER  
**D. EBERHART**  
 APPROVED  
 STANDARDS COMMITTEE APPROVED FOR DISTRIBUTION 04/19 DATE

ARIZONA DEPARTMENT OF TRANSPORTATION  
 INFRASTRUCTURE DELIVERY AND OPERATIONS DIVISION  
 BRIDGE GROUP STANDARD DRAWING  
 TUBULAR SIGN STRUCTURES  
 TUBULAR CANTILEVER  
 SIGN SUPPORT DETAILS  
 DRAWING NO.  
 SD 9.10  
 (4 of 5)