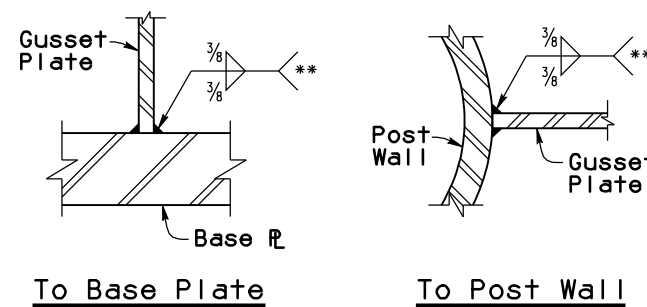
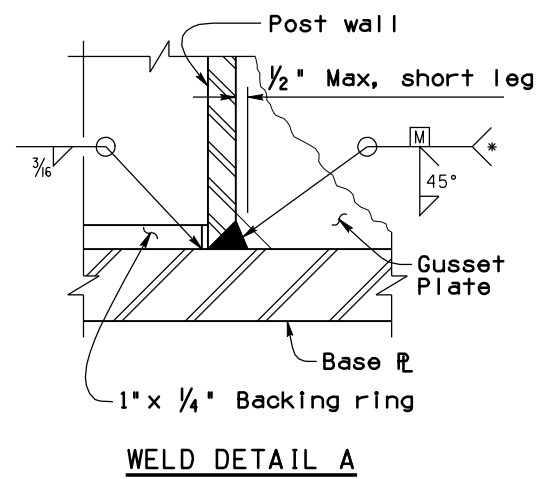
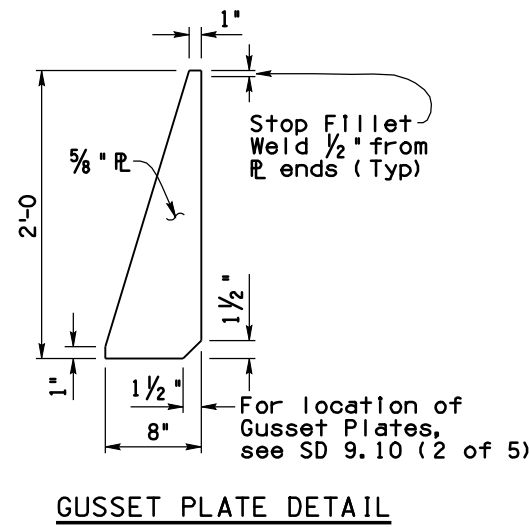
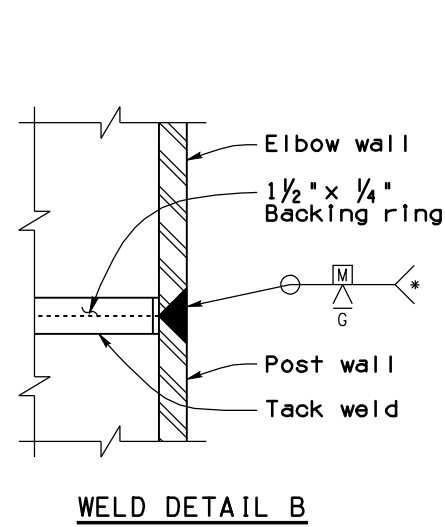
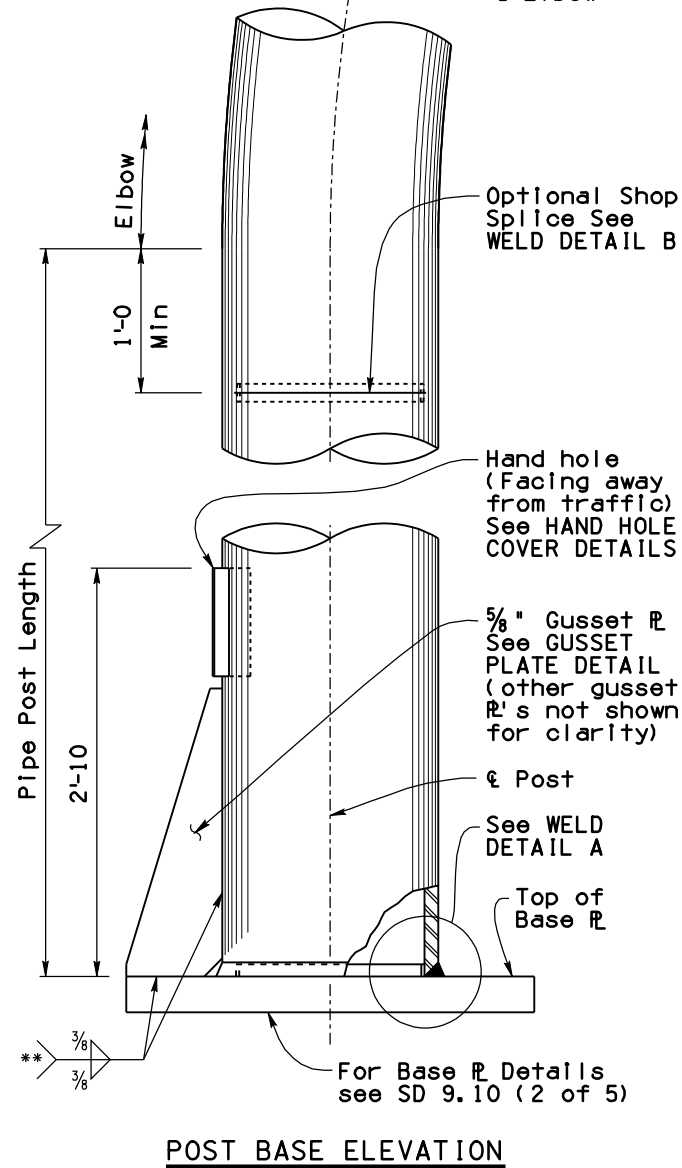
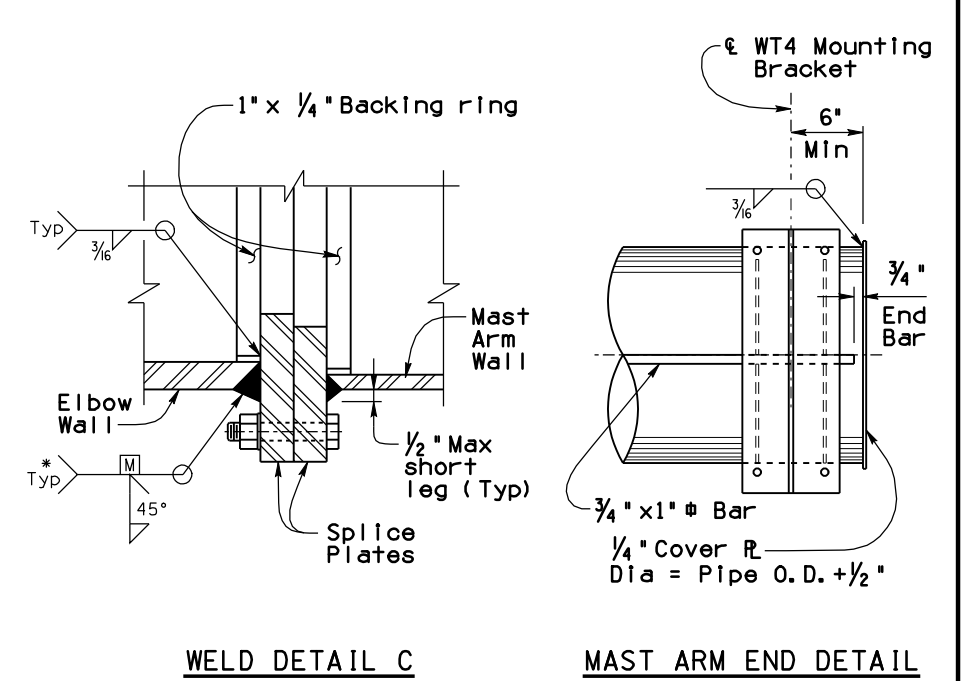
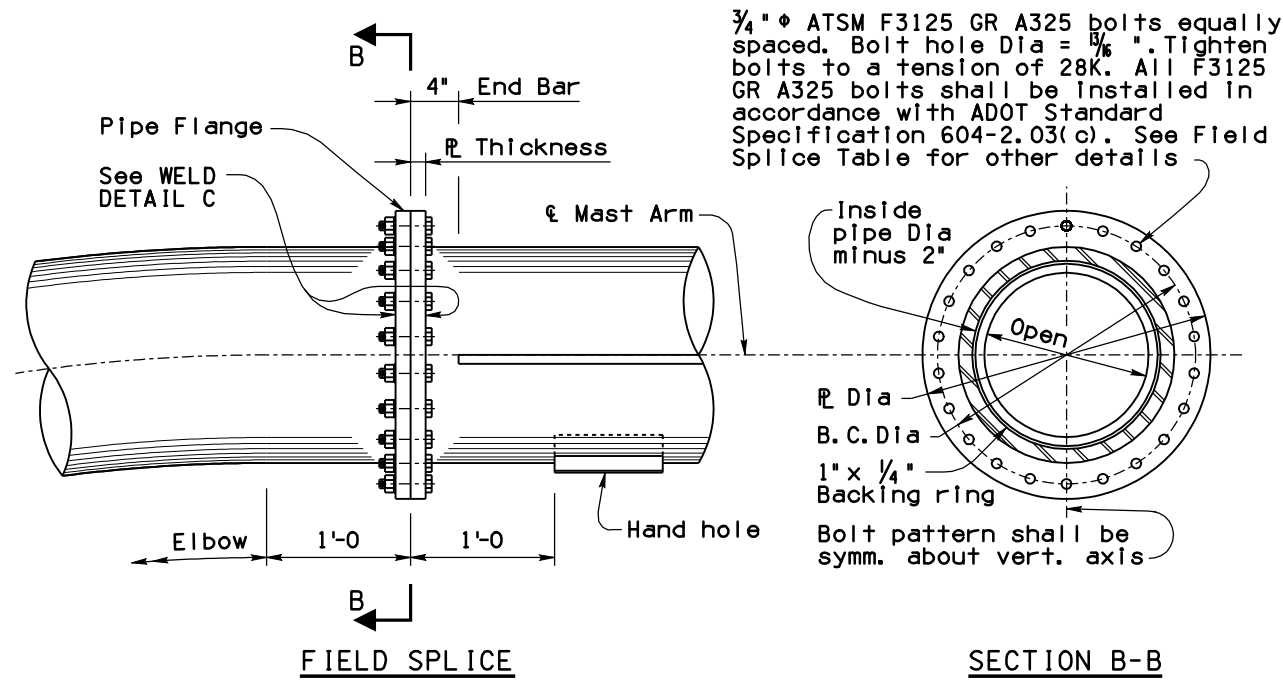
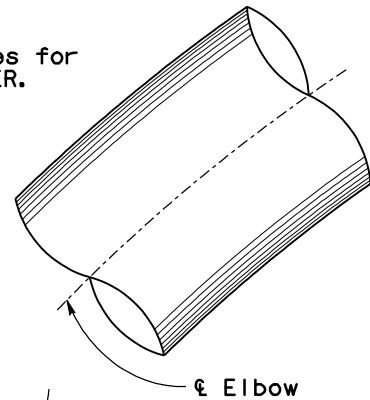


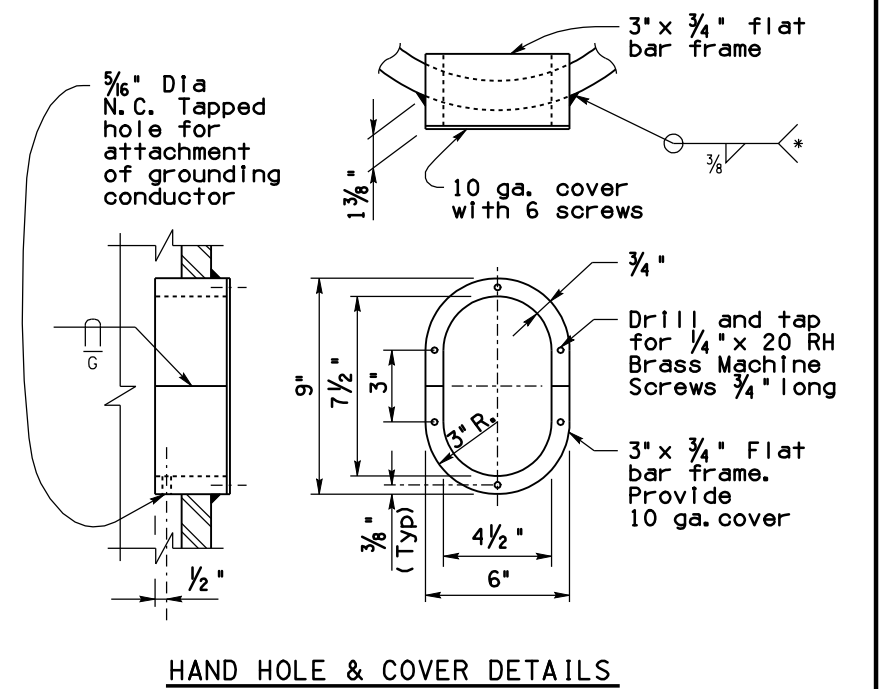
Field Splice					
Frame Type	Pipe Dia	R Dia	R Thickness	No. of Bolts	B. C. Dia
1C	16"	22"	1 1/4"	22	19 1/2"
2C	18"	24"	1 3/8"	26	21 1/2"
3C	20"	26"	1 3/8"	29	23 1/2"
4C	22"	28"	1 1/2"	31	25 1/2"

**NOTE:**  
Provide hand holes for TUBULAR CANTILEVER. See HAND HOLE & COVER DETAILS



\* Preheat per AWS requirements.

GUSSET PLATE WELDS  
\*\* Stop Fillet Weld 1/2" from R ends



STANDARDS ENGINEER  
**A. ALZUBI**  
RECOMMENDED FOR APPROVAL  
GROUP MANAGER  
**D. EBERHART**  
APPROVED  
STANDARDS COMMITTEE APPROVED FOR DISTRIBUTION  
DATE 04/19

ARIZONA DEPARTMENT OF TRANSPORTATION  
INFRASTRUCTURE DELIVERY AND OPERATIONS DIVISION  
BRIDGE GROUP STANDARD DRAWING

TUBULAR SIGN STRUCTURES  
TUBULAR CANTILEVER  
POST AND MAST ARM DETAILS

DRAWING NO.  
SD 9.10  
(3 of 5)

Note to Designer: The information presented in this Standard Drawing has been prepared in accordance with recognized engineering principles and is for general use. It should not be used for specific application without competent professional examination and verification of its suitability and applicability by a licensed professional engineer. Contents within the inner border line shall not be altered.

03/11

PRIOR DISTRIBUTION DATE