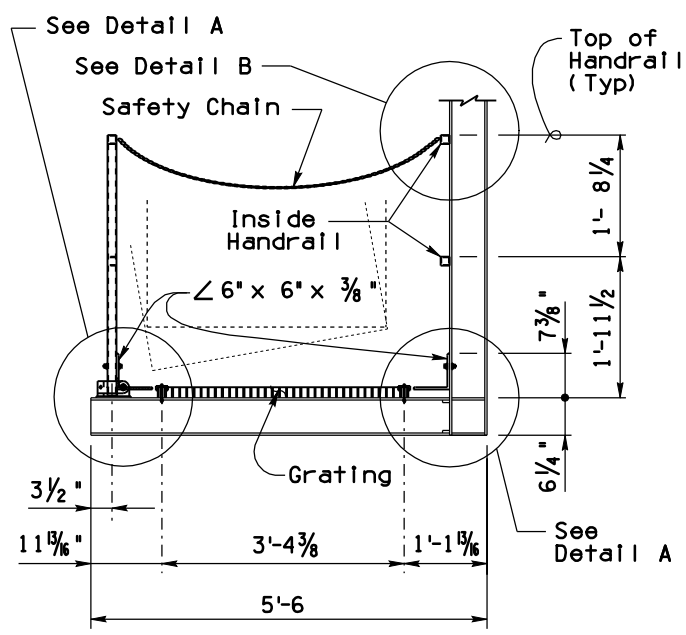
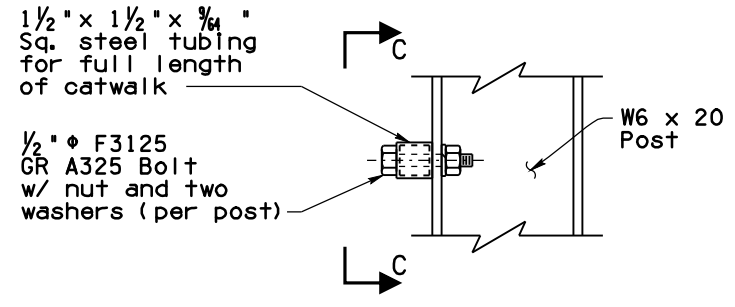


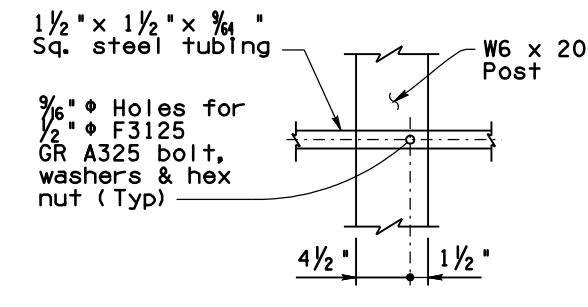
Note to Designer: This Standard Drawing has been prepared in accordance with recognized engineering principles and is for general use. It should not be used for specific application without competent professional examination and verification of its suitability and applicability by a licensed professional engineer. Contents within the inner border line shall not be altered.



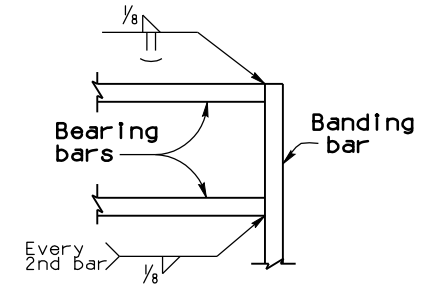
PART. SECTION OF CATWALK



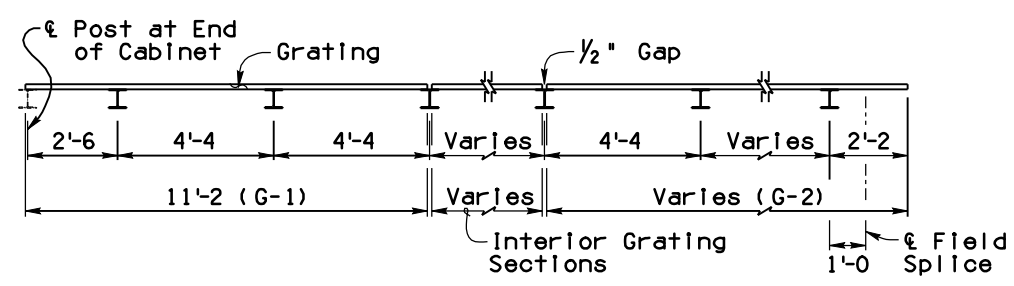
DETAIL B



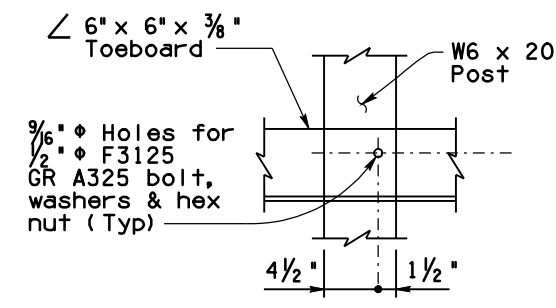
SECTION C-C



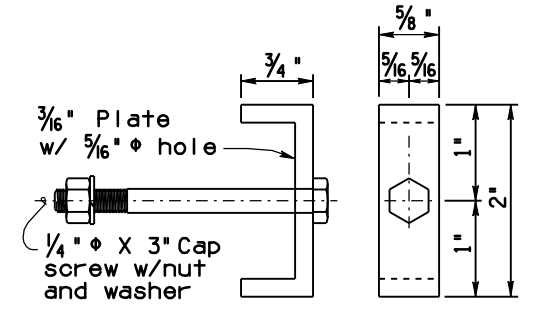
DETAIL C



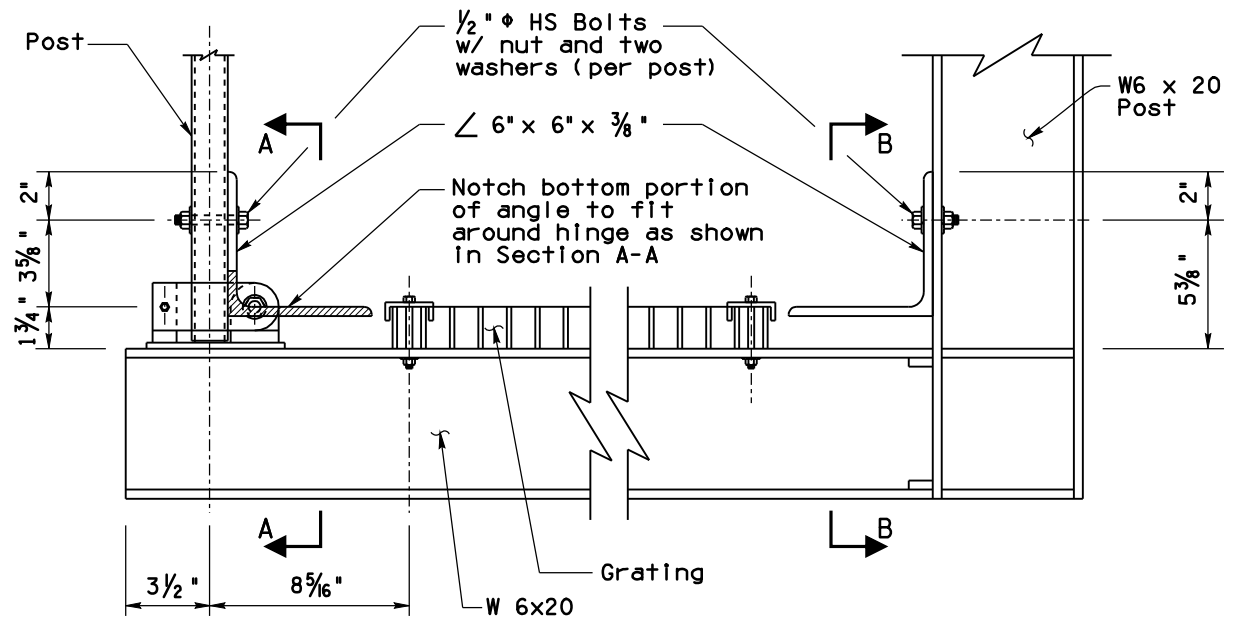
GRATING ELEVATION
(Right Side Shown, Left Side Opposite)



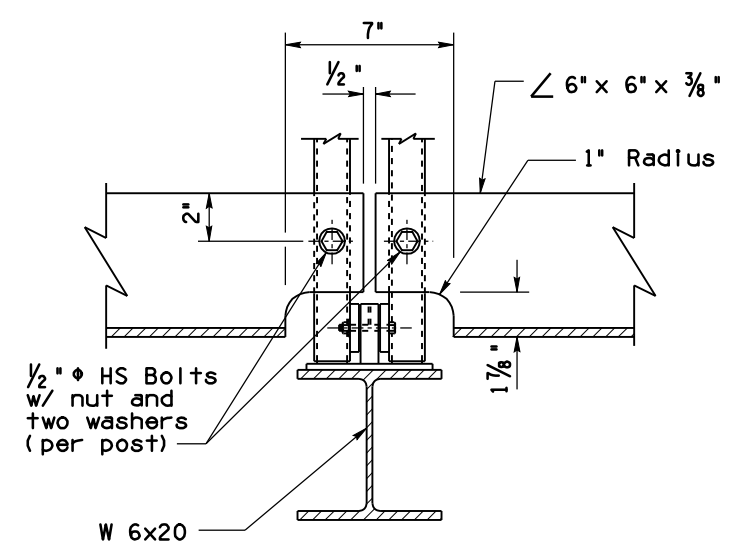
SECTION B-B



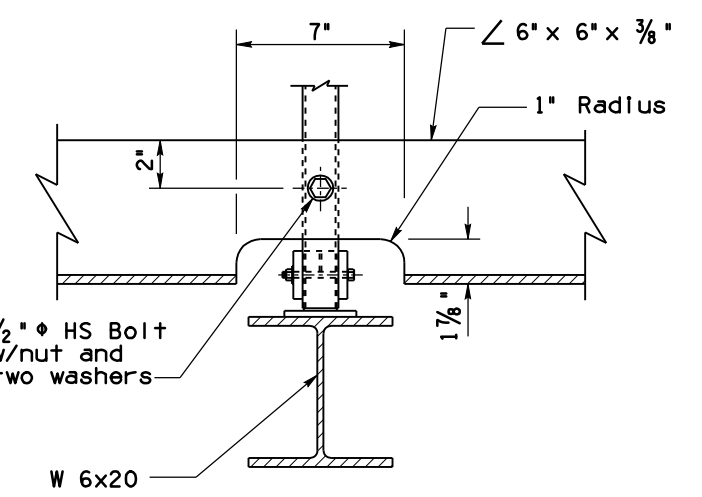
GRATING CLIP



DETAIL A



SECTION A-A (Dual Posts)



SECTION A-A (Single Post)

NOTES:

- Welded grating shall meet the standard requirements of ANSI/NAAMM MGB 531-00. Grating shall be 1 3/4" x 3/16" bearing bars at 1 1/8" centers and cross bars at 4" centers.
- All grating to have 1 3/4" x 3/16" banding bars at both ends.
- Weld bearing bars to banding bars with 1/8" fillet weld, one side every second bar and as shown in Detail C.
- All grating to be straight and true after fabrication. Grating shall be galvanized.
- See Table for grating dimensions:

GRATING DIMENSIONS		
Grate No.	Length	Width
G-1	11'-2"	3'-5 3/4"
Interior	Varies**	3'-5 3/4"
G-2	Varies*	3'-5 3/4"

* Maximum length of G-2 is 10'-9 1/2".
** Use additional interior grating sections of 4'-3 1/2", 8'-7 1/2", or 12'-11 1/2" if required.

STANDARDS ENGINEER
A. ALZUBI
RECOMMENDED FOR APPROVAL
GROUP MANAGER
D. EBERHART
APPROVED
STANDARDS COMMITTEE APPROVED FOR DISTRIBUTION 04/19 DATE

ARIZONA DEPARTMENT OF TRANSPORTATION
INFRASTRUCTURE DELIVERY AND OPERATIONS DIVISION
BRIDGE GROUP STANDARD DRAWING

DMS (VARIABLE TILT CABINET)
CATWALK
MISCELLANEOUS DETAILS

DRAWING NO.
SD 9.53
(5 of 5)