

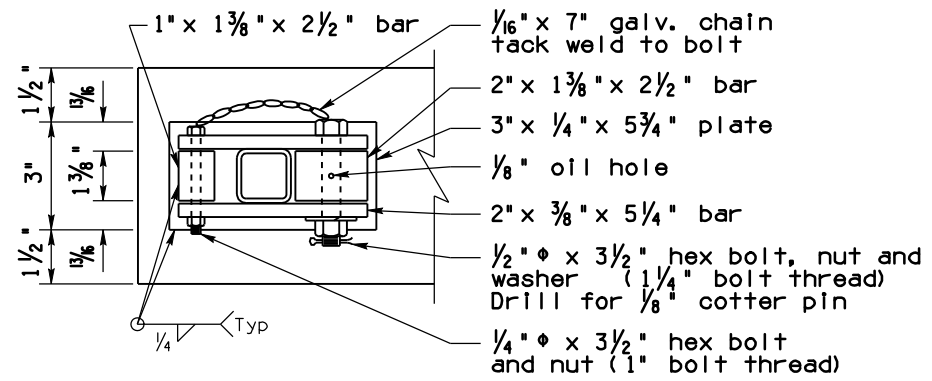
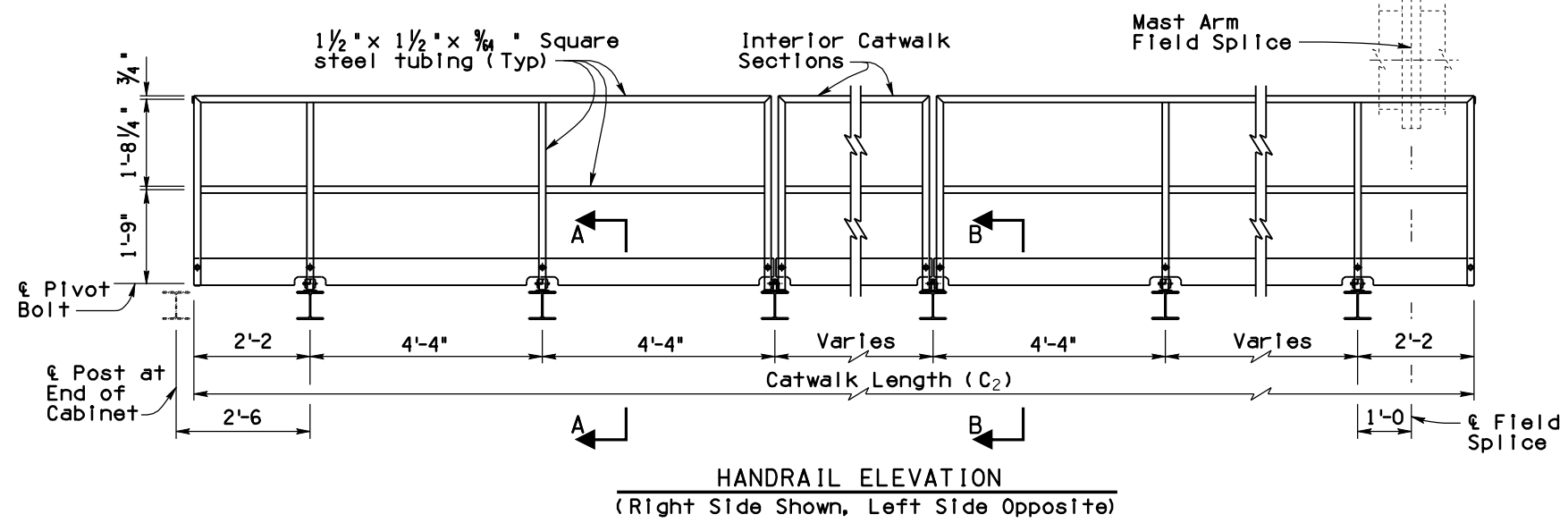
Note to Designer: The information presented in this Standard Drawing has been prepared in accordance with recognized engineering principles and is for general use. It should not be used for specific application without competent professional examination and verification of its suitability and applicability by a licensed professional engineer. Contents within the inner border line shall not be altered.

PRIOR DISTRIBUTION DATE 01/15

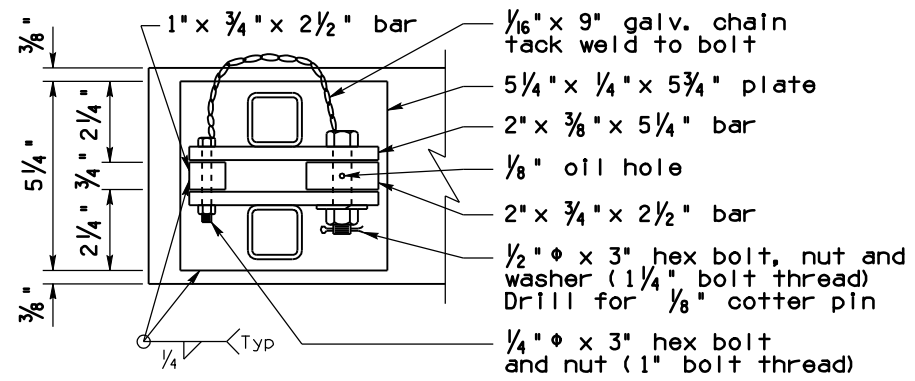
LED DMS TUBULAR FRAME CAMBER (INCHES)								
Frame Type	2F	2F	3F	3F	3F	4F	4F	4F
Span	56'-0"	70'-0"	82'-0"	94'-0"	106'-0"	118'-0"	130'-0"	142'-0"
"X"	1"	1 1/2"	1 3/4"	2 1/2"	3 1/2"	4"	6"	7 3/4"
"Y"	1 1/4"	2"	2 1/4"	3 1/2"	4 3/4"	6"	8 1/4"	11 1/4"

Calculated camber provides for deflections due to dead load of tubular structure and dead loads of sign cabinet, catwalks and attachments. For spans other than shown, interpolate for "X" and "Y" dimensions.

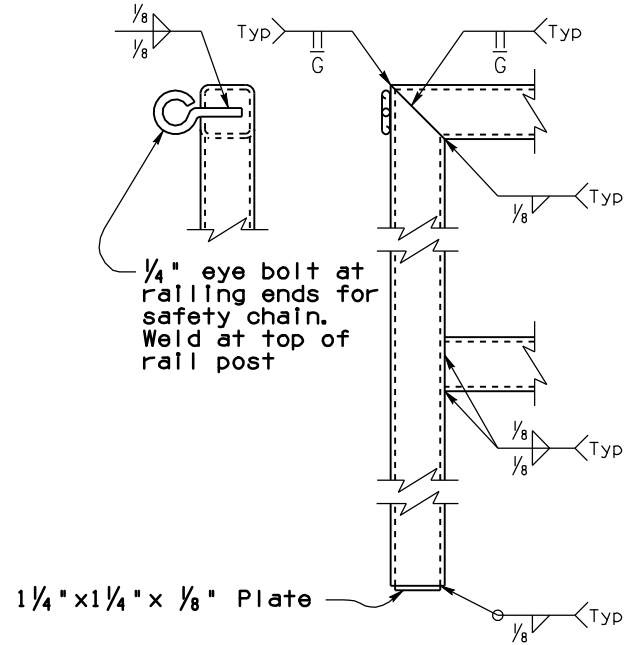
See SD 9.20 (3 of 5) for CAMBER DIAGRAM and camber notes.



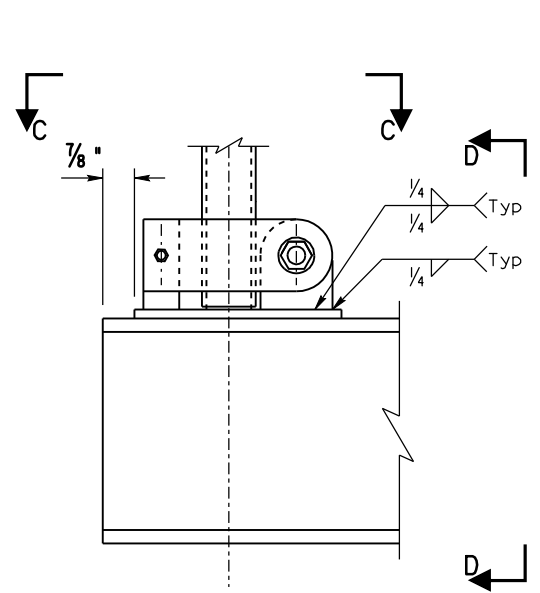
SECTION C-C (Single Post)



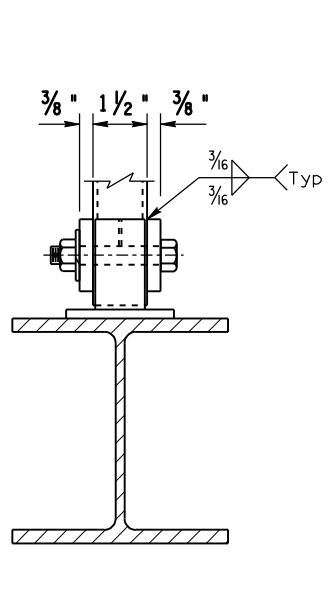
SECTION E-E (Dual Post)



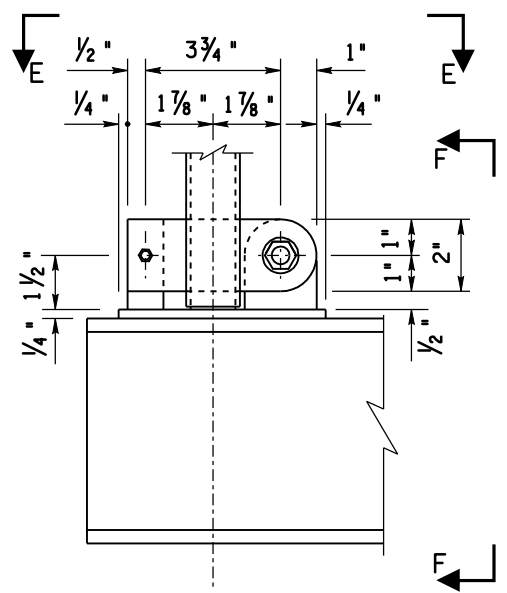
HANDRAIL WELD DETAILS



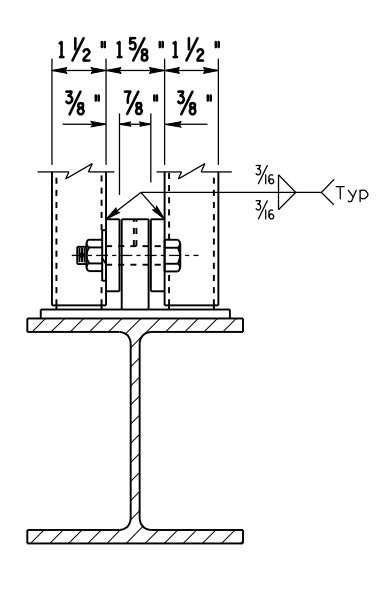
SECTION A-A (Single Post)



SECTION D-D (Single Post)



SECTION B-B (Dual Post)



SECTION F-F (Dual Post)

NOTES:

Handrails shall extend from end of sign cabinet to mast arm field splice as shown for both catwalks. Maximum support post spacing shall be 4'-4". Minimum support post spacing shall be 2'-2". Maximum three spaces per rail section. Minimum two support posts per rail section. Minimum catwalk length = 6'-6".

Handrail to be 1 1/2" x 1 1/2" x 3/16" square steel tubing weighing 2.70 plf.

Provide eye bolts at ends of top handrails for 3/16" galvanized safety chain with (1) 1/4" snap hook per catwalk end.

Provide 5/8" holes for 1/2" pivot bolts and 3/8" holes for 1/4" lock bolts.

See SD 9.53 (5 of 5) for inside handrails, grating and toeboard details.

STANDARDS ENGINEER
A. ALZUBI
 RECOMMENDED FOR APPROVAL
 GROUP MANAGER
D. EBERHART
 APPROVED
 STANDARDS COMMITTEE APPROVED FOR DISTRIBUTION DATE 04/19

ARIZONA DEPARTMENT OF TRANSPORTATION
 INFRASTRUCTURE DELIVERY AND OPERATIONS DIVISION
 BRIDGE GROUP STANDARD DRAWING

**DMS (VARIABLE TILT CABINET)
 CATWALK
 HANDRAIL DETAILS**

DRAWING NO.
**SD 9.53
 (4 of 5)**