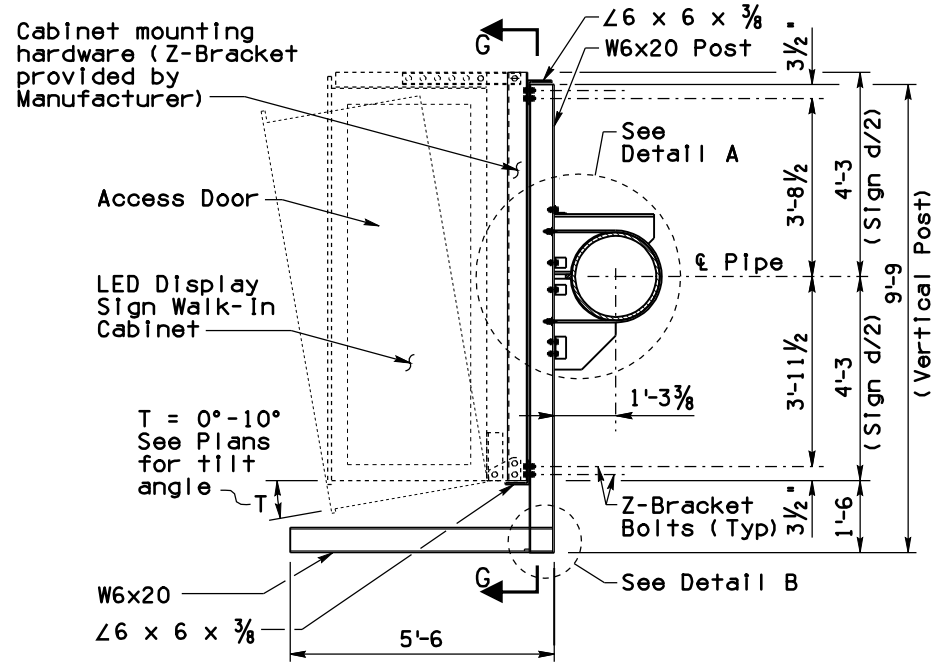
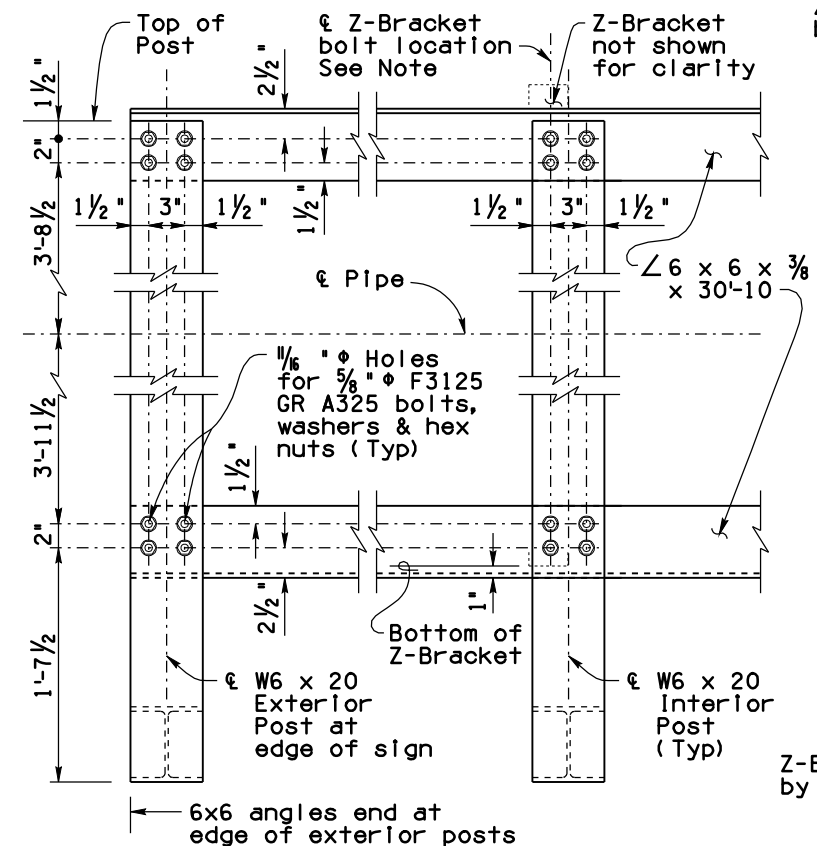


Note to Designer: The information presented in this Standard Drawing has been prepared in accordance with recognized engineering principles and is for general use. It should not be used for specific application without competent professional examination and verification of its suitability and applicability by a licensed professional engineer. Contents within the inner border line shall not be altered.

PRIOR DISTRIBUTION DATE 01/15



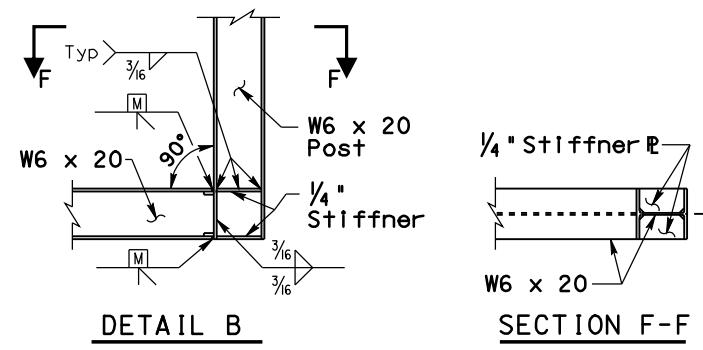
SECTION A-A



SECTION G-G

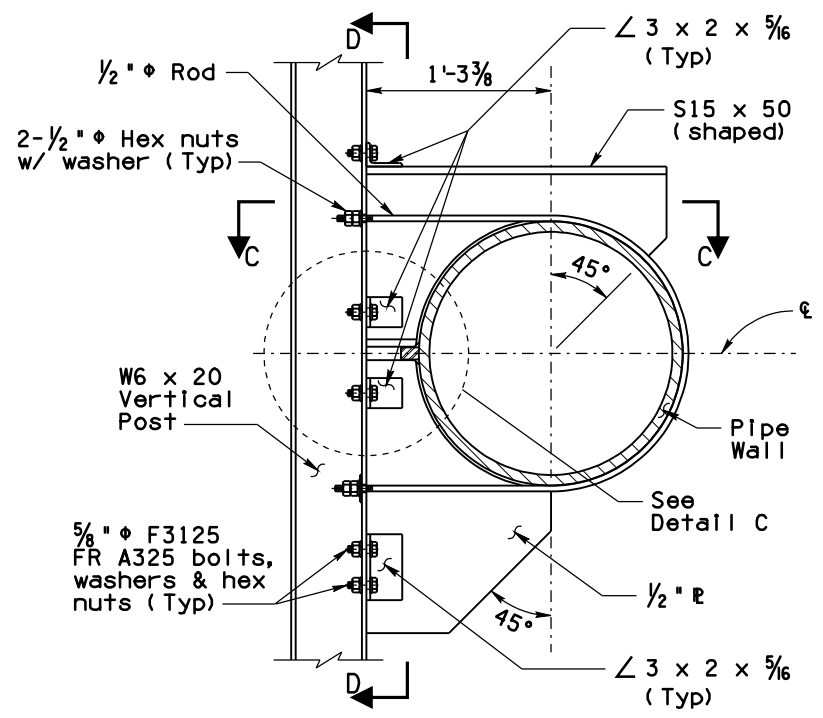
Z-BRACKET NOTES:
 Mirror Z-Bracket bolt locations about vertical ε of sign.
 Fabricator shall verify hole locations in Z flange prior to drilling holes in W6x20 post.
 Barrier Tape shall be used at any point of contact between aluminum Z-Mounting Brackets (provided by manufacturer) and Steel Sign Supports. Tape shall be submitted to the Engineer for approval.

Frame Type	Nominal Pipe Dia	a	b
2F	16"	8 7/16"	11 1/16"
3F	20"	6 7/16"	9 1/16"
4F	22"	5 7/16"	8 1/16"

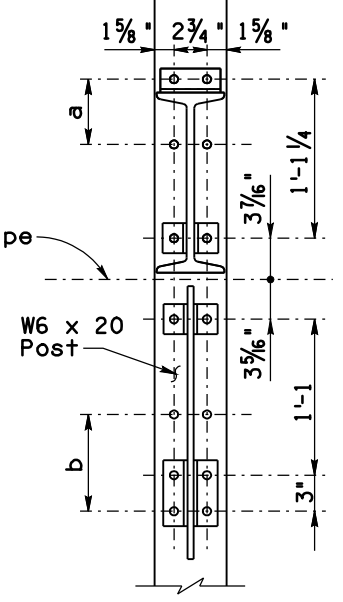


DETAIL B

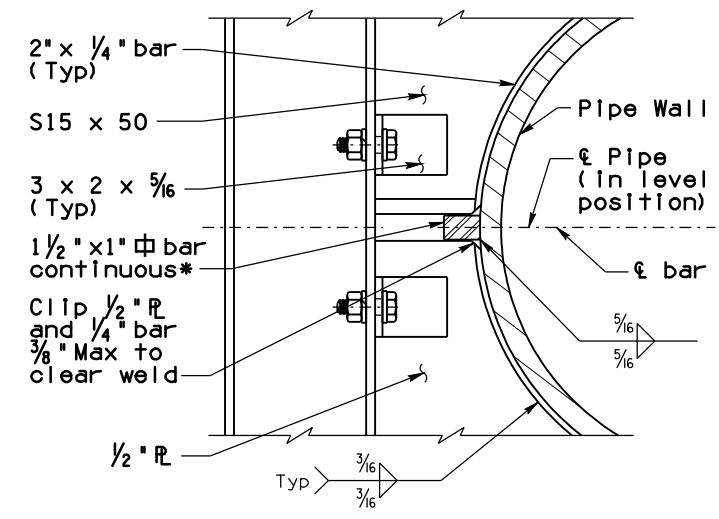
SECTION F-F



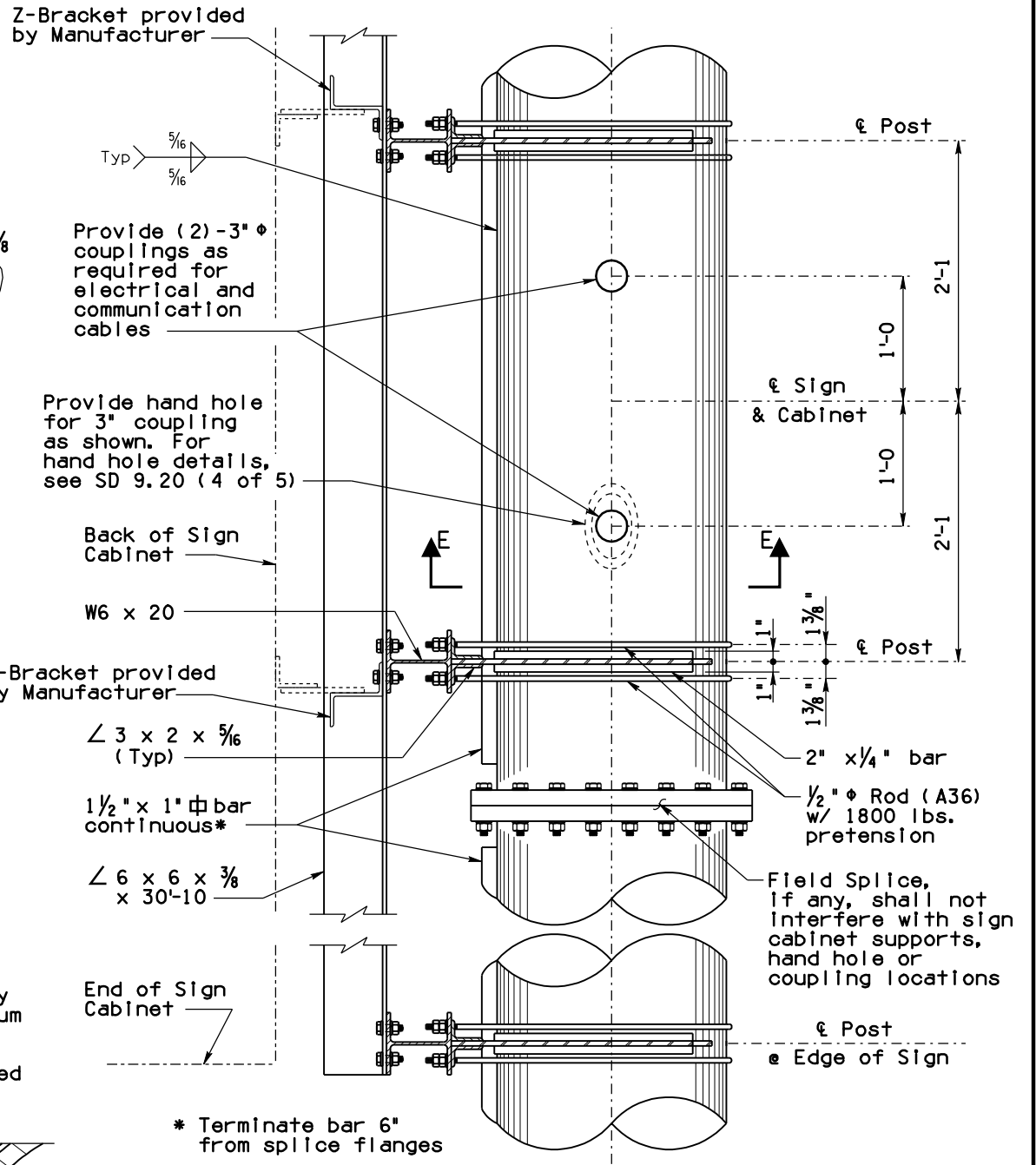
DETAIL A



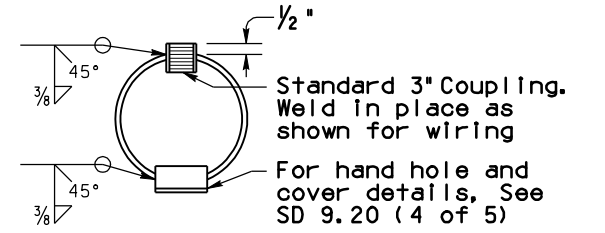
SECTION D-D



DETAIL C



SECTION C-C



SECTION E-E

* Terminate bar 6" from splice flanges

STANDARDS ENGINEER
A. ALZUBI
 RECOMMENDED FOR APPROVAL
 GROUP MANAGER
D. EBERHART
 APPROVED
 STANDARDS COMMITTEE APPROVED FOR DISTRIBUTION 04/19 DATE

ARIZONA DEPARTMENT OF TRANSPORTATION
 INFRASTRUCTURE DELIVERY AND OPERATIONS DIVISION
 BRIDGE GROUP STANDARD DRAWING

**DMS (VARIABLE TILT CABINET)
 TUBULAR FRAME
 MOUNTING DETAILS**

DRAWING NO.
SD 9.53
 (2 of 5)