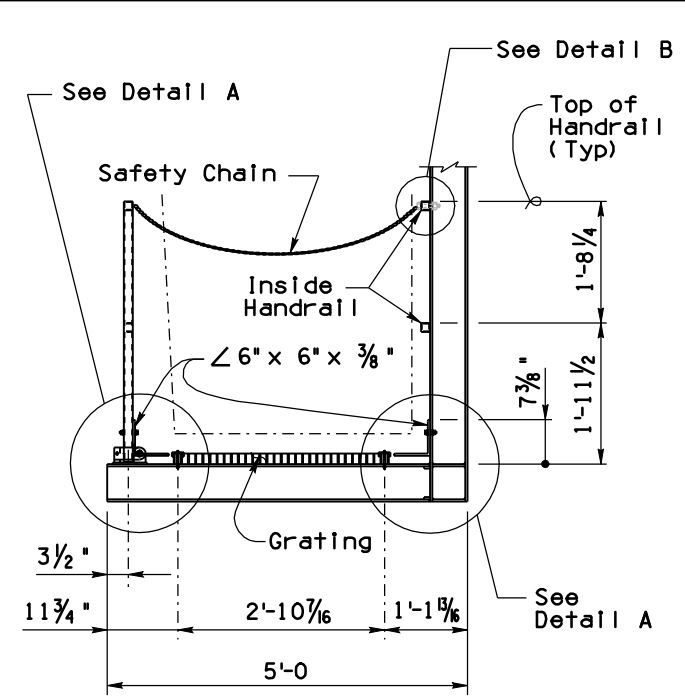
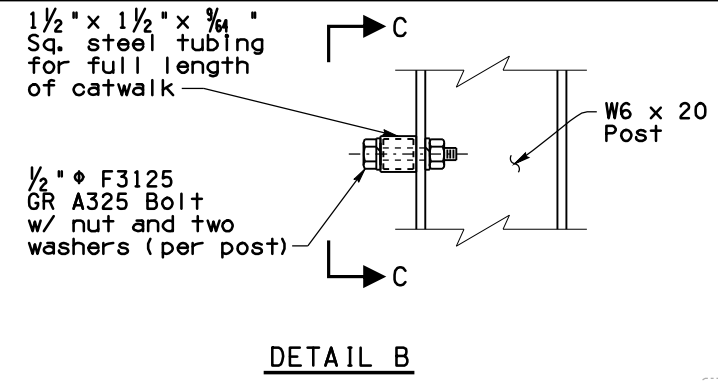


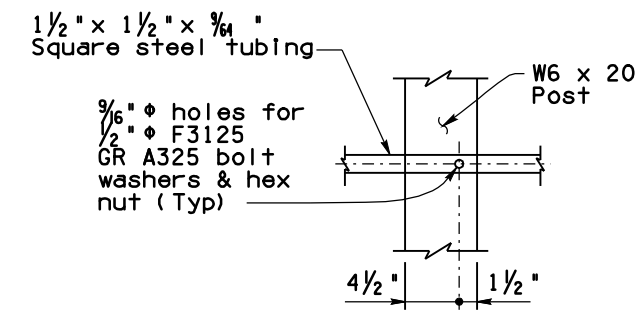
Note to Designer: This Standard Drawing has been prepared in accordance with recognized engineering principles and is for general use. It should not be used for specific application without competent professional examination and verification of its suitability and applicability by a licensed professional engineer. Contents within the inner border line shall not be altered.



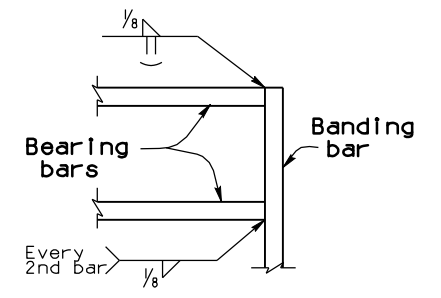
PART. SECTION OF DMS CATWALK



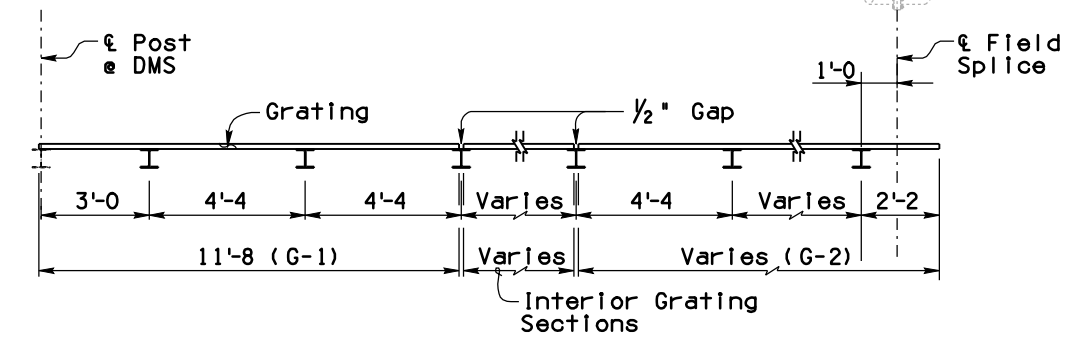
DETAIL B



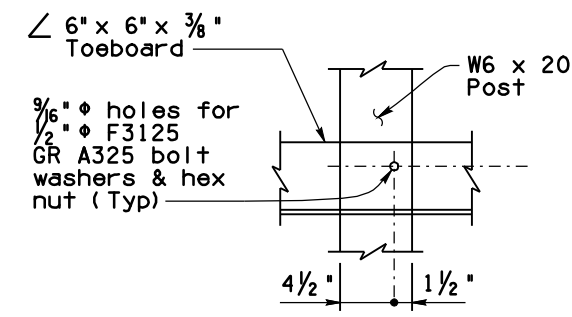
SECTION C-C



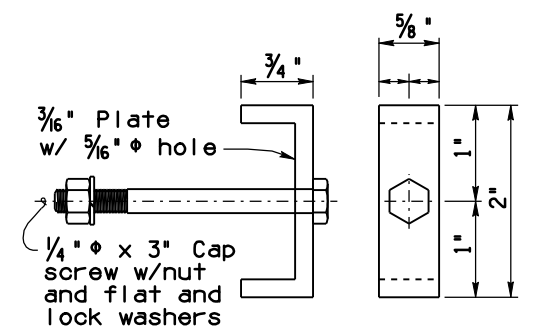
DETAIL C



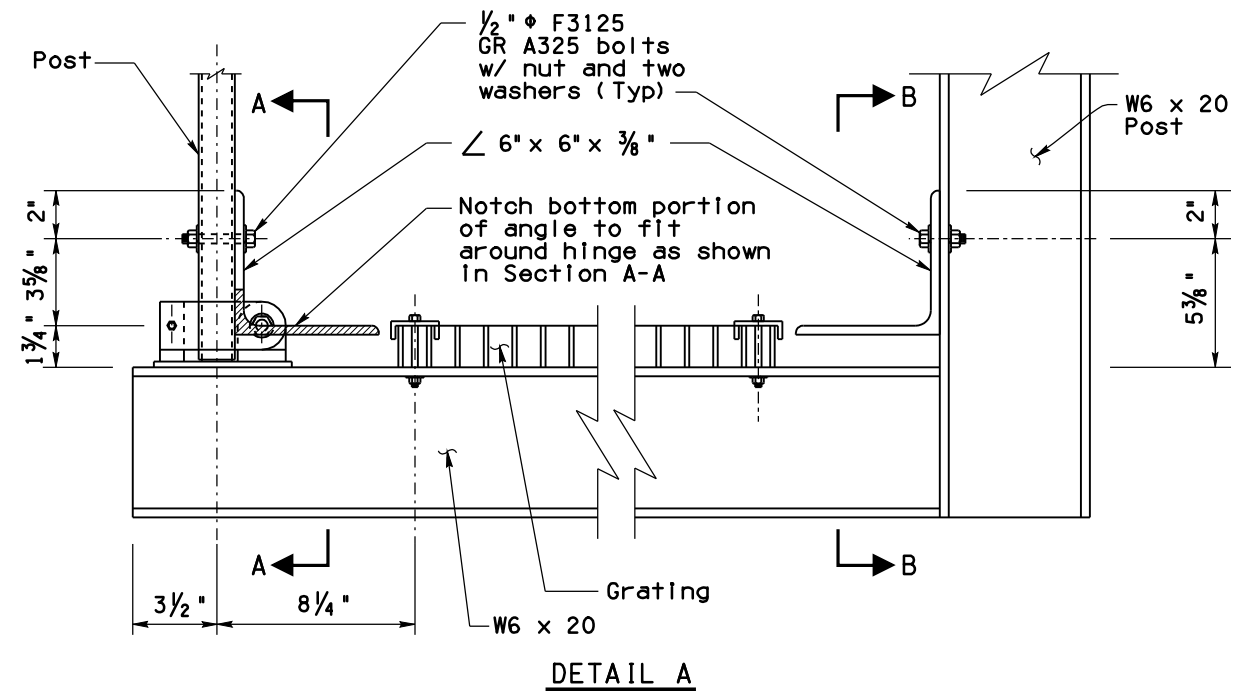
GRATING ELEVATION
(Right Side Shown, Left Side Opposite)



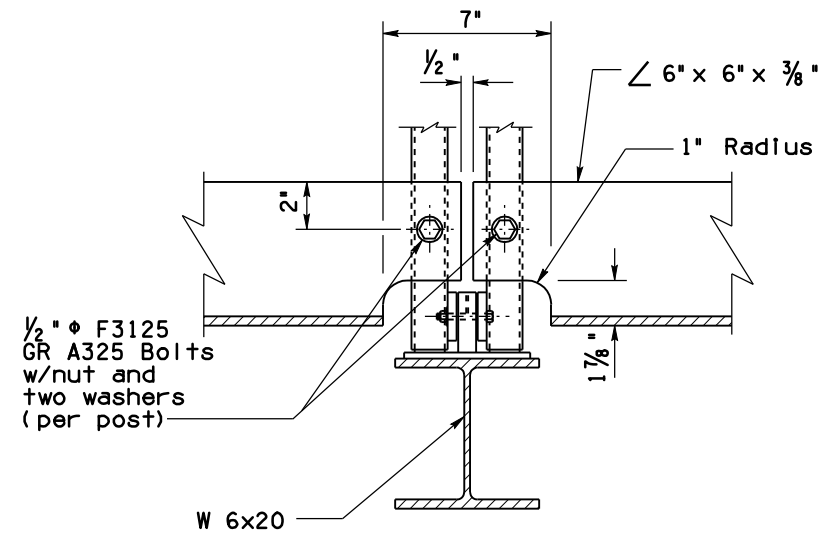
SECTION B-B



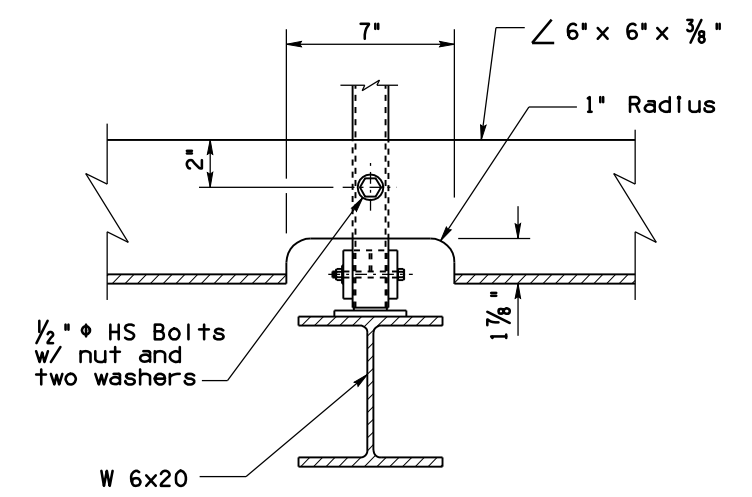
GRATING CLIP



DETAIL A



SECTION A-A
(Dual Posts)



SECTION A-A
(Single Post)

NOTES:

- Welded grating shall meet the standard requirements of ANSI/NAAMM MGB 531-00. Grating shall be $1\frac{3}{4}" \times \frac{3}{16}"$ bearing bars at $1\frac{3}{16}"$ centers and cross bars at 4" centers.
- All grating to have $1\frac{3}{4}" \times \frac{3}{16}"$ banding bars at both ends.
- Weld bearing bars to banding bars with $\frac{1}{8}"$ fillet weld, one side every second bar and as shown in Detail C.
- All grating to be straight and true after fabrication.
- Grating shall be galvanized.
- See Table at right for grating dimensions:

GRATING DIMENSIONS		
Grate No.	Length	Width
G-1	11'-8"	2'-11 $\frac{13}{16}"$
Interior	Varies**	2'-11 $\frac{13}{16}"$
G-2	Varies*	2'-11 $\frac{13}{16}"$

* Maximum length of G-2 is 10'-6"
 ** Use additional interior grating sections of 4'-3 $\frac{1}{2}"$, 8'-7 $\frac{1}{2}"$ or 12'-11 $\frac{1}{2}"$ if required

STANDARDS ENGINEER
A. ALZUBI
 RECOMMENDED FOR APPROVAL
 GROUP MANAGER
D. EBERHART
 APPROVED
 STANDARDS COMMITTEE APPROVED FOR DISTRIBUTION

ARIZONA DEPARTMENT OF TRANSPORTATION
 INFRASTRUCTURE DELIVERY AND OPERATIONS DIVISION
 BRIDGE GROUP STANDARD DRAWING

DYNAMIC MESSAGE SIGN
 TUBULAR FRAME
 MISCELLANEOUS DETAILS

DRAWING NO.
SD 9.52
 (5 of 5)