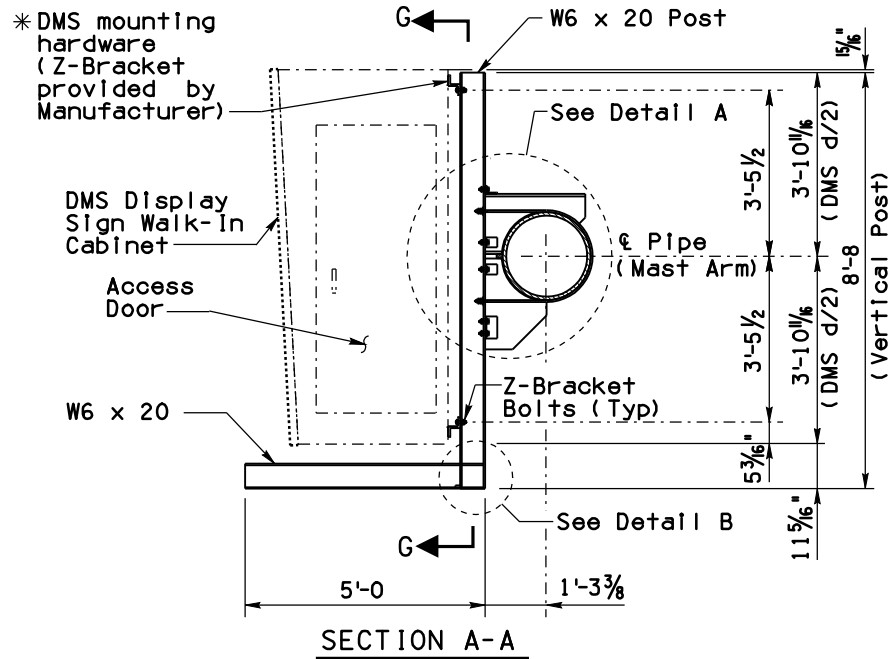
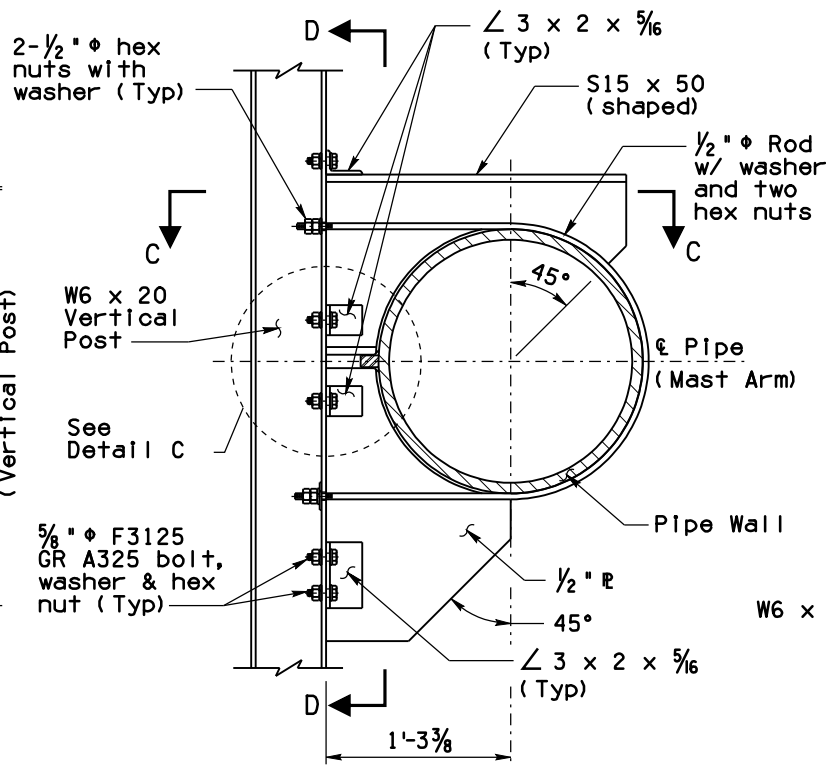


**CABINET NOTE:**

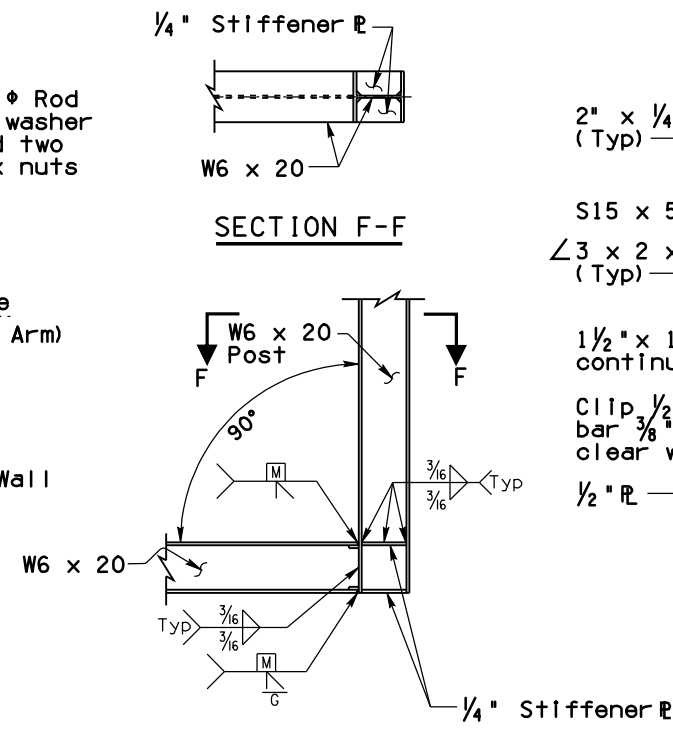
Cabinet Depth = 7'-9 3/16"  
FF Panel Depth = 7'-10 3/8"



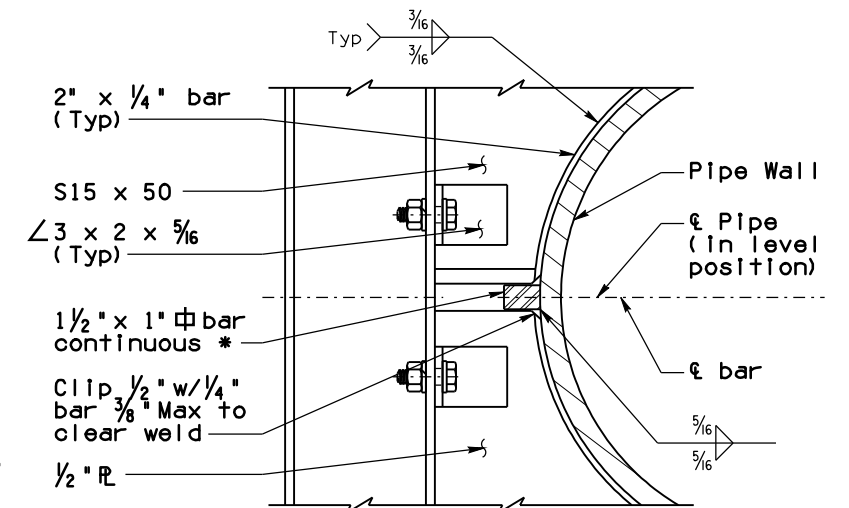
SECTION A-A



DETAIL A



DETAIL B



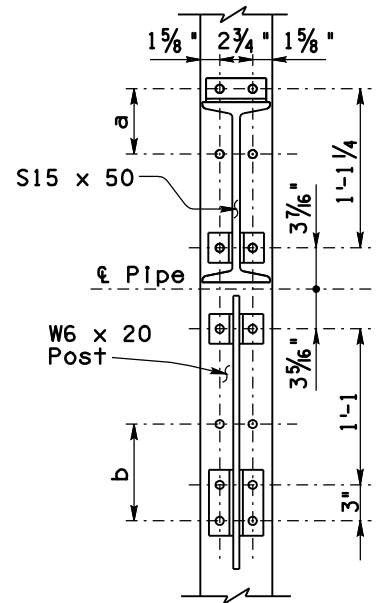
DETAIL C

\* Terminate bar 6" from splice flanges

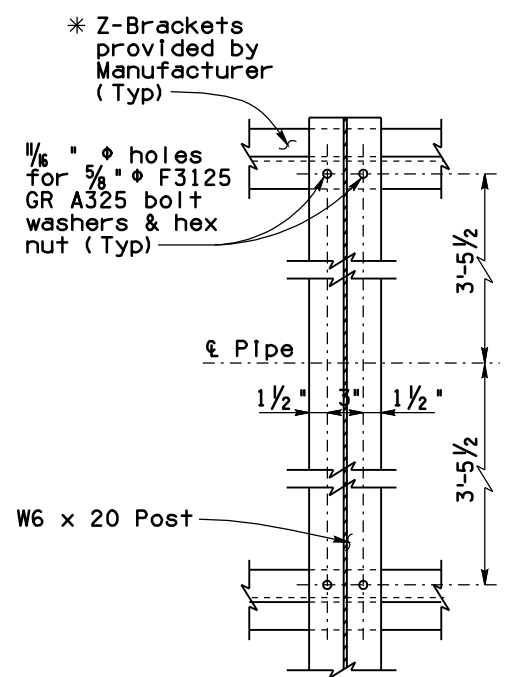
**\* Z-Bracket NOTE:**

Barrier Tape shall be used at any point of contact between aluminum Z-Mounting Brackets (provided by Cabinet Manufacturer) and Steel Sign Supports. The Contractor shall supply Tape based on Cabinet Manufacturer's recommendations, and shall be submitted to the Engineer for approval.

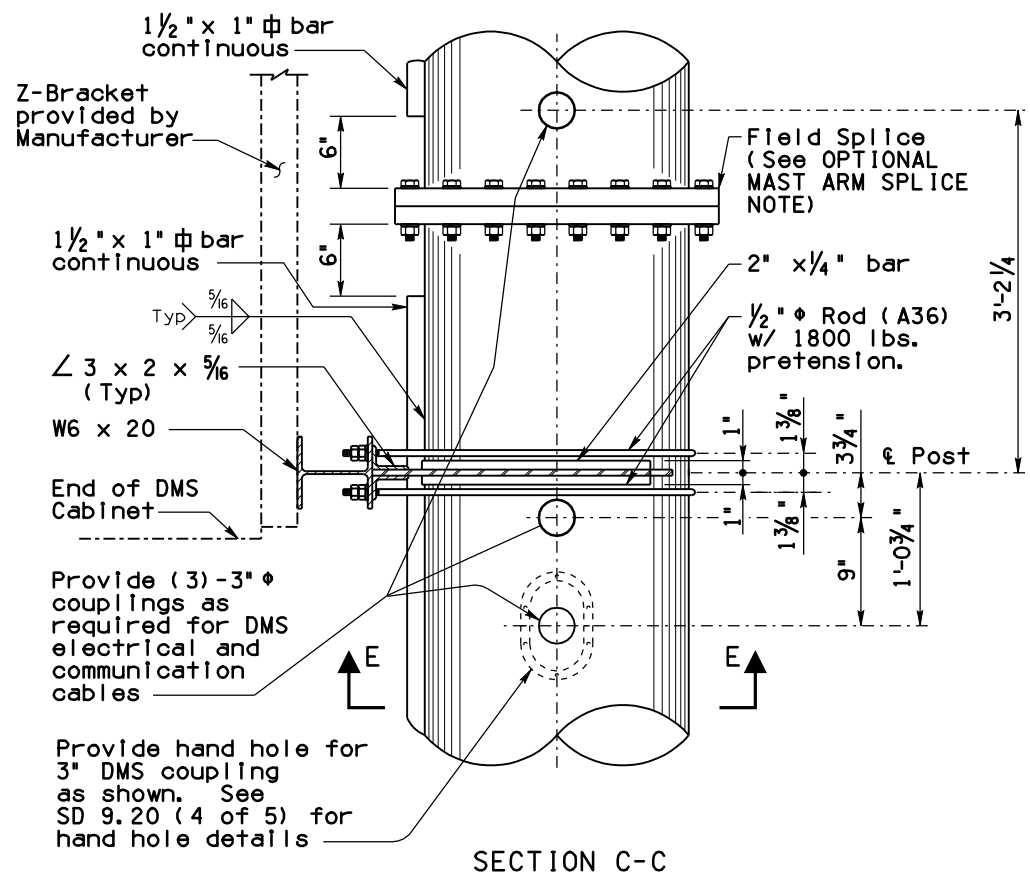
**NOTE:**  
See Table 1 for 'a' and 'b' dimensions



SECTION D-D

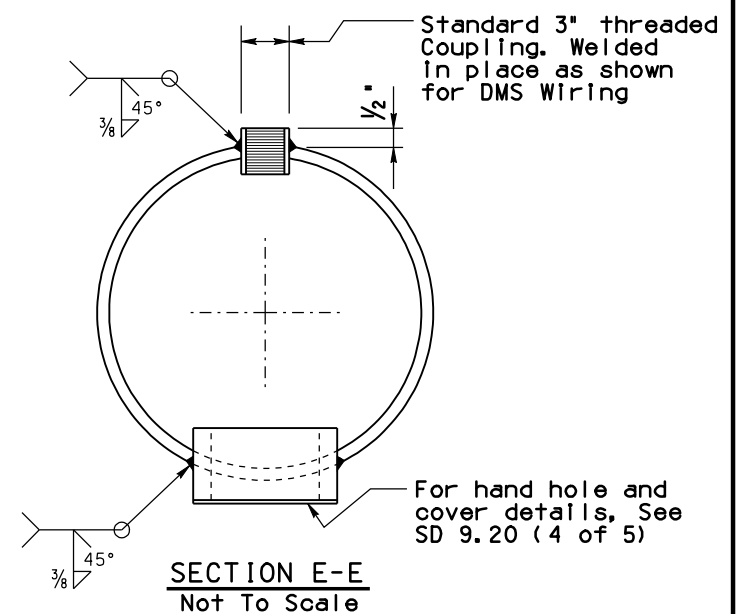


SECTION G-G



SECTION C-C

**OPTIONAL MAST ARM SPLICE NOTE:**  
Optional mast arm field splice, if any, shall not interfere with DMS cabinet supports, hand hole or coupling locations.



SECTION E-E  
Not To Scale

Frame Type	Nominal Pipe Dia	a	b
2F	16"	8 7/16"	11 1/16"
3F	20"	6 7/16"	9 1/16"
4F	22"	5 7/16"	8 1/16"

STANDARDS ENGINEER  
**A. ALZUBI**  
RECOMMENDED FOR APPROVAL  
GROUP MANAGER  
**D. EBERHART**  
APPROVED  
STANDARDS COMMITTEE APPROVED FOR DISTRIBUTION  
DATE 04/19

ARIZONA DEPARTMENT OF TRANSPORTATION  
INFRASTRUCTURE DELIVERY AND OPERATIONS DIVISION  
BRIDGE GROUP STANDARD DRAWING

DYNAMIC MESSAGE SIGN  
TUBULAR FRAME  
MOUNTING DETAILS

DRAWING NO.  
SD 9.52  
(2 of 5)

Note to Designer: The information presented in this Standard Drawing has been prepared in accordance with recognized engineering principles and is for general use. It should not be used for specific application without competent professional examination and verification of its suitability and applicability by a licensed professional engineer. Contents within the inner border line shall not be altered.

PRIOR DISTRIBUTION DATE 03/17