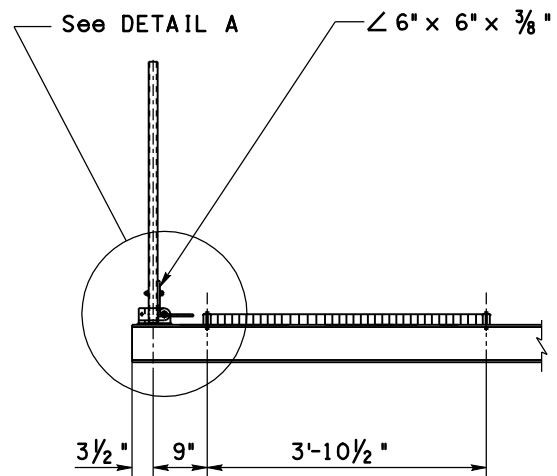
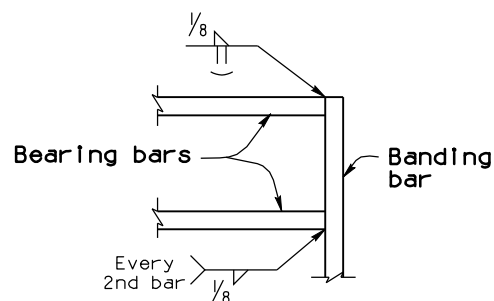


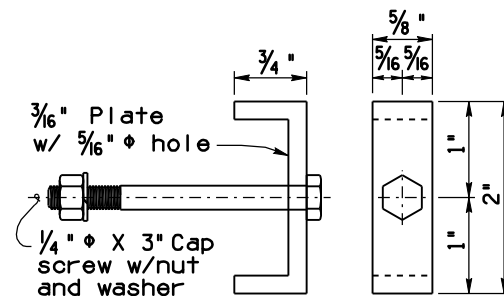
Note to Designer: The information presented in this Standard Drawing has been prepared in accordance with recognized engineering principles and is for general use. It should not be used for specific application without competent professional examination and verification of its suitability and applicability by a licensed professional engineer. Contents within the inner border line shall not be altered.



PARTIAL SECTION OF VMS CATWALK
Scale: 3/4" = 1'-0"



DETAIL B



GRATING CLIP

NOTES:

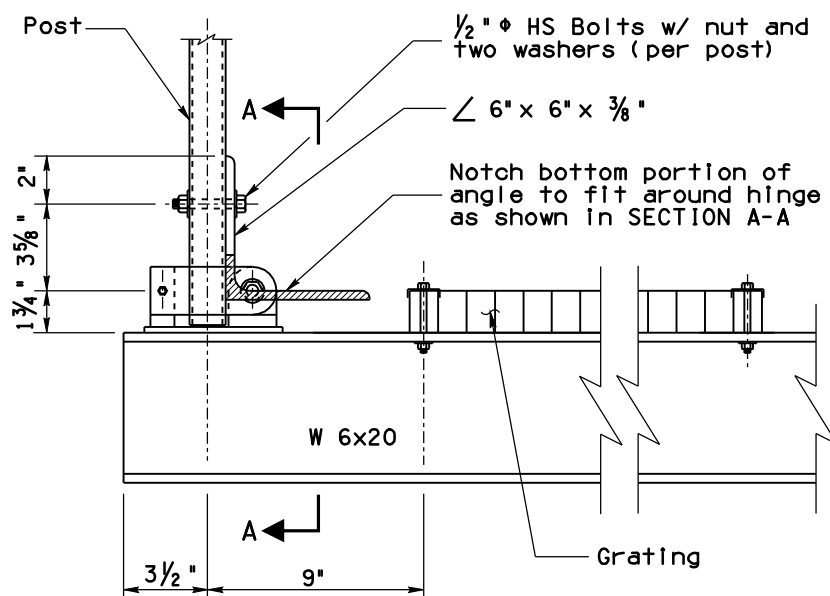
Welded grating to be Irving Type IWA or approved equal. 1 3/4" x 3/16" bearing bars at 1 7/16" centers and cross bars at 4" centers.

All grating to have 1 3/4" x 3/16" banding bars at both ends. Weld bearing bars to banding bars with 1/8" fillet weld one side every second bar and as shown in detail B.

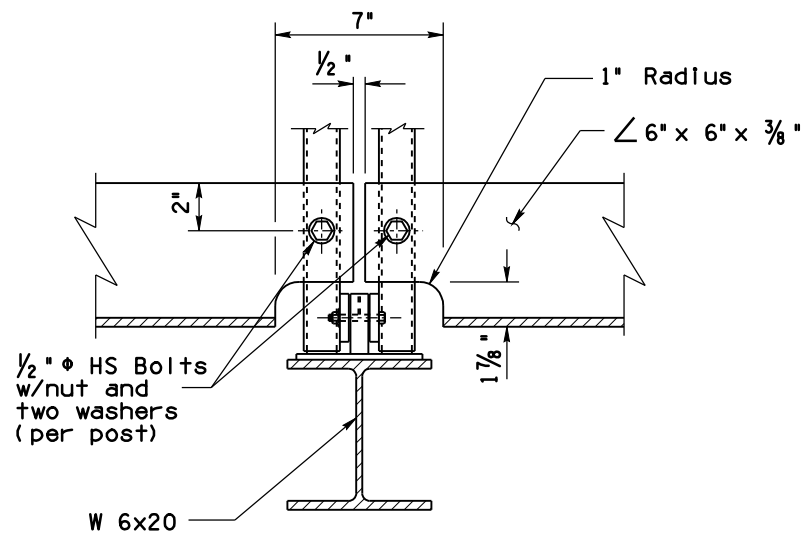
All grating to be straight and true after fabrication.

See table below for grating dimensions.

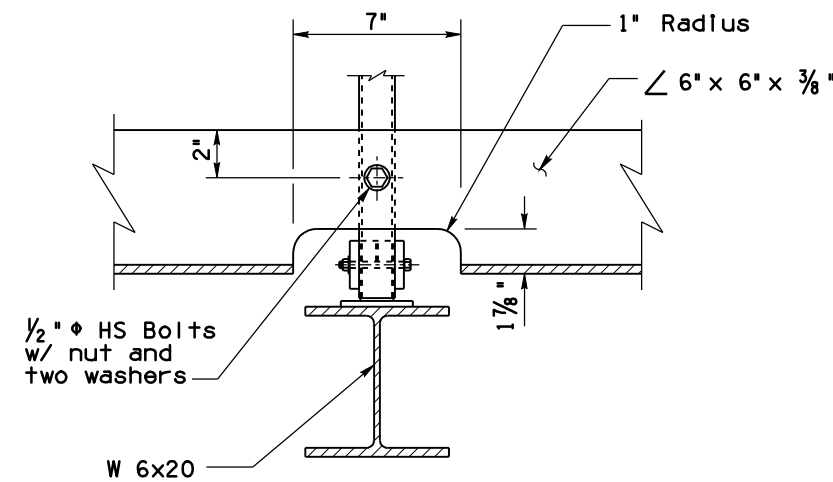
GRATING DIMENSIONS		
Grate No.	Length	Width
G-1	9'-0	3'-11 1/16
G-2	10'-8 1/2	3'-11 1/16
G-3	9'-0	3'-11 1/16



DETAIL A



SECTION A-A (Dual Posts)



SECTION A-A (Single Post)

07/00

PRIOR DISTRIBUTION DATE

STANDARDS ENGINEER
A. ALZUBI
RECOMMENDED FOR APPROVAL
GROUP MANAGER
D. EBERHART
APPROVED
STANDARDS COMMITTEE APPROVED FOR DISTRIBUTION
DATE: 04/19

ARIZONA DEPARTMENT OF TRANSPORTATION
INFRASTRUCTURE DELIVERY AND OPERATIONS DIVISION
BRIDGE GROUP STANDARD DRAWING

VARIABLE MESSAGE SIGN
CATWALK
MISCELLANEOUS DETAILS

DRAWING NO.
SD 9.50
(5 of 5)