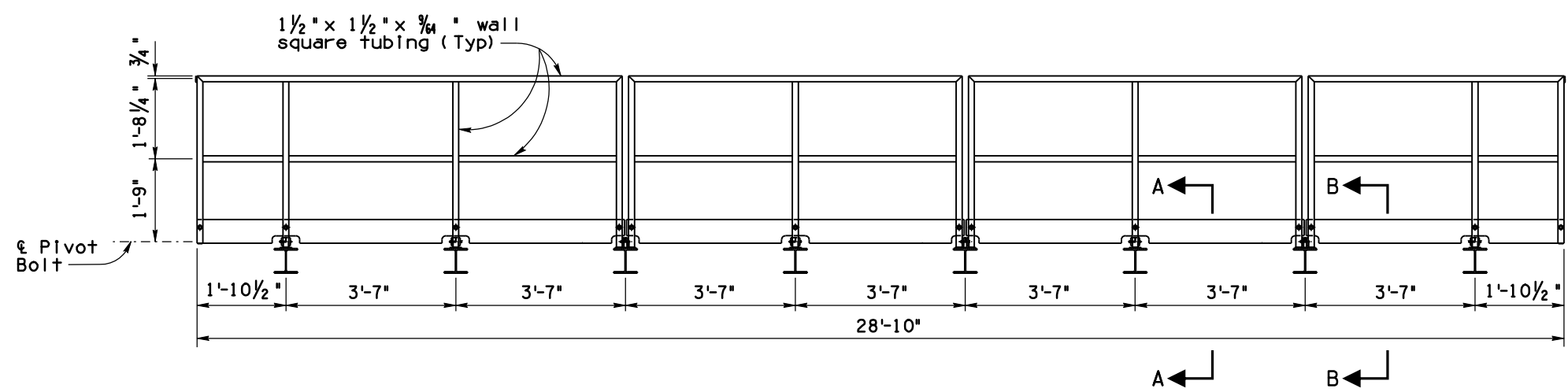
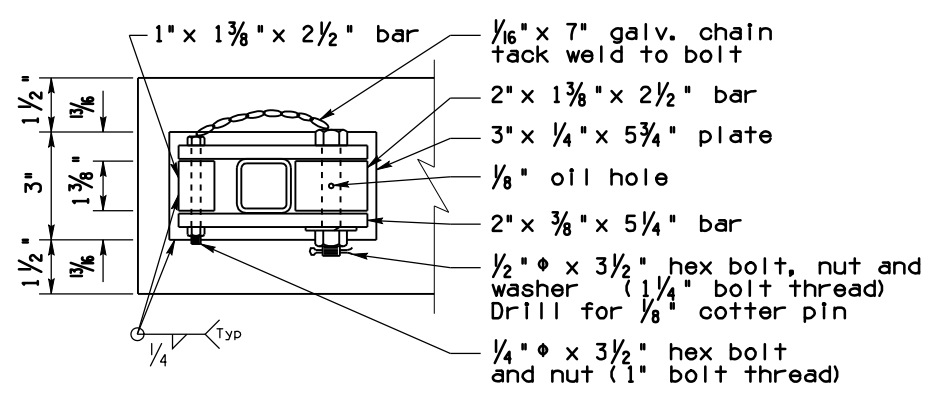


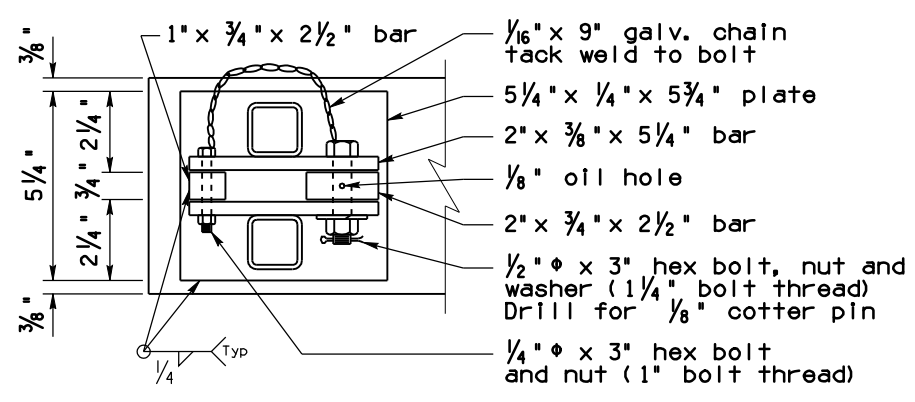
Note to Designer: This Standard Drawing has been prepared in accordance with recognized engineering principles and is for general use. It should not be used for specific application without competent professional examination and verification of its suitability and applicability by a licensed professional engineer. Contents within the inner border line shall not be altered.



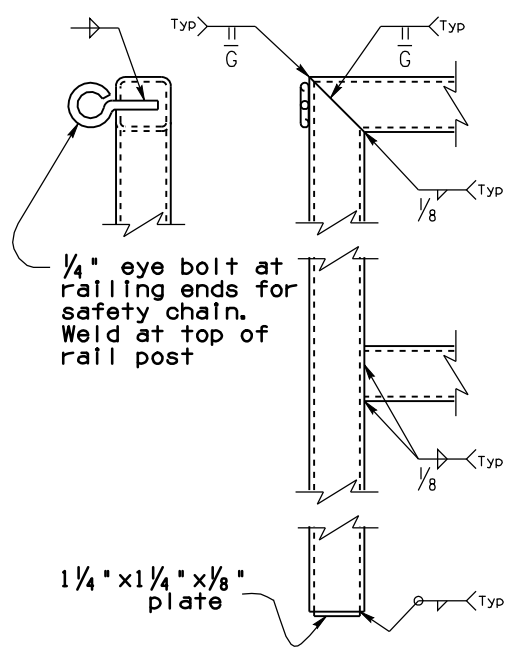
HANDRAIL ELEVATION
Scale: 5/8" = 1'-0"



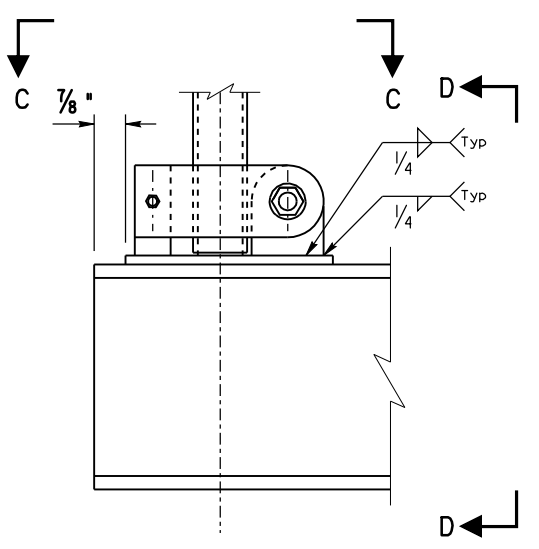
SECTION C-C
(Single Post)



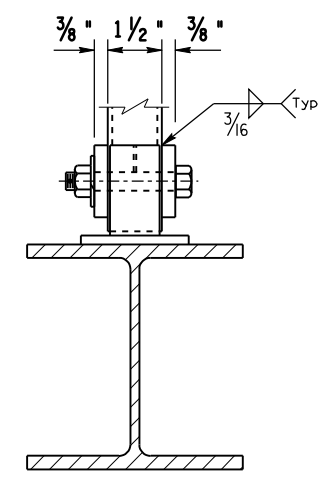
SECTION E-E
(Dual Post)



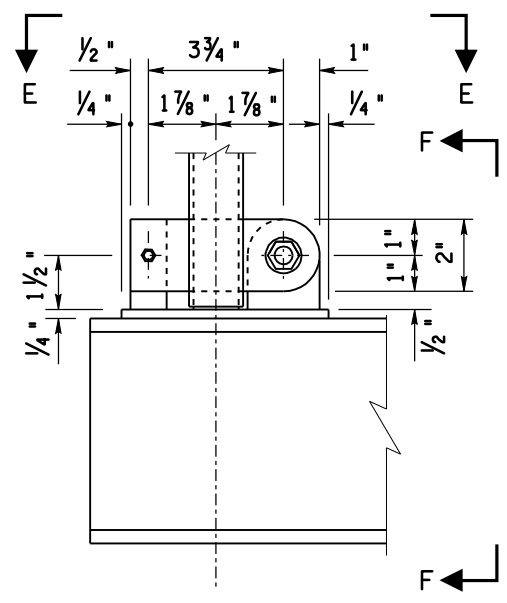
HANDRAIL WELD DETAILS



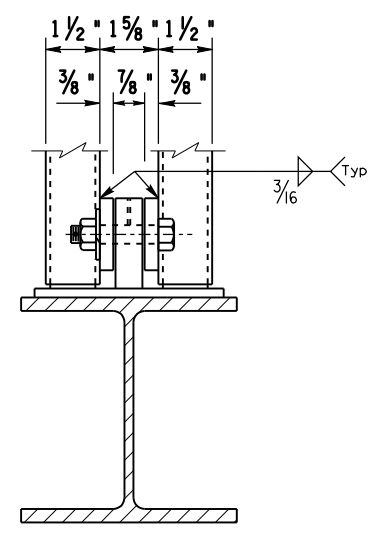
SECTION A-A
(Single Post)



SECTION D-D
(Single Post)



SECTION B-B
(Dual Post)



SECTION F-F
(Dual Post)

NOTES:

Handrail to be 1 1/2" x 1 1/2" x 3/4" square steel tubing weighing 2.70 plf
 Provide 5/8" holes for 1/2" pivot bolts, and 3/8" holes for 1/4" lock bolts

PRIOR DISTRIBUTION DATE 07/00

STANDARDS ENGINEER
A. ALZUBI
 RECOMMENDED FOR APPROVAL
 GROUP MANAGER
D. EBERHART
 APPROVED
 STANDARDS COMMITTEE APPROVED FOR DISTRIBUTION DATE 04/19

ARIZONA DEPARTMENT OF TRANSPORTATION
 INFRASTRUCTURE DELIVERY AND OPERATIONS DIVISION
 BRIDGE GROUP STANDARD DRAWING

**VARIABLE MESSAGE SIGN
 CATWALK
 HANDRAIL DETAILS**

DRAWING NO.
SD 9.50
 (4 of 5)