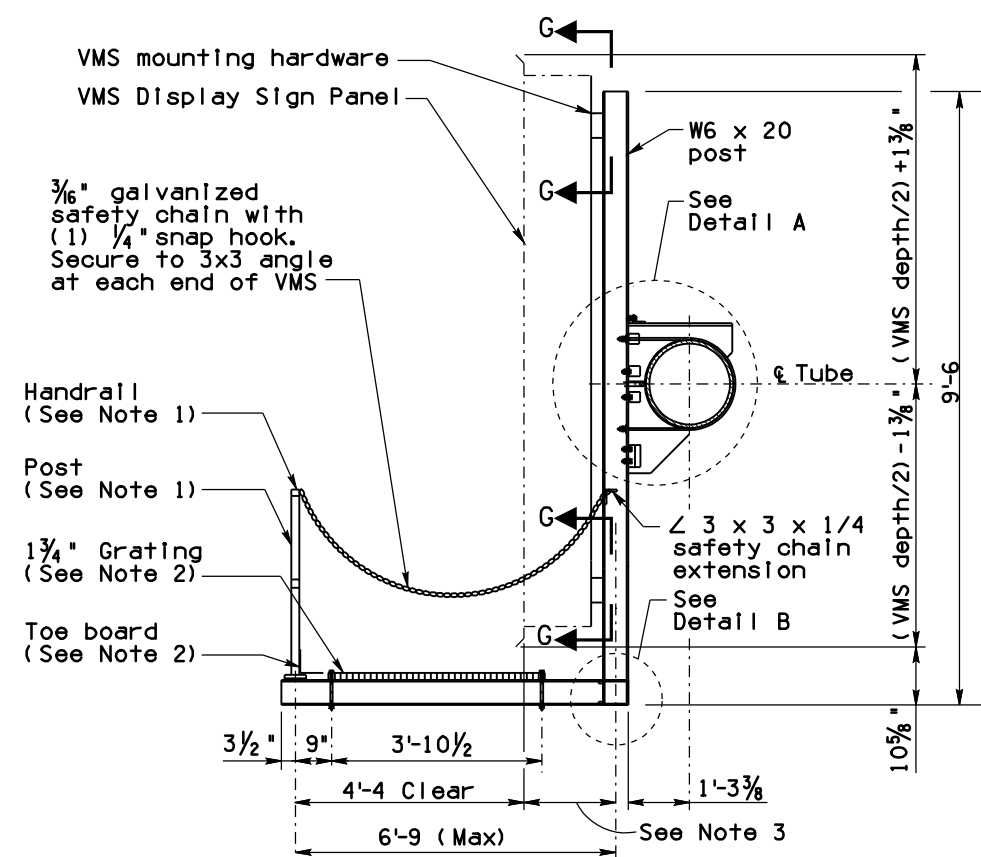
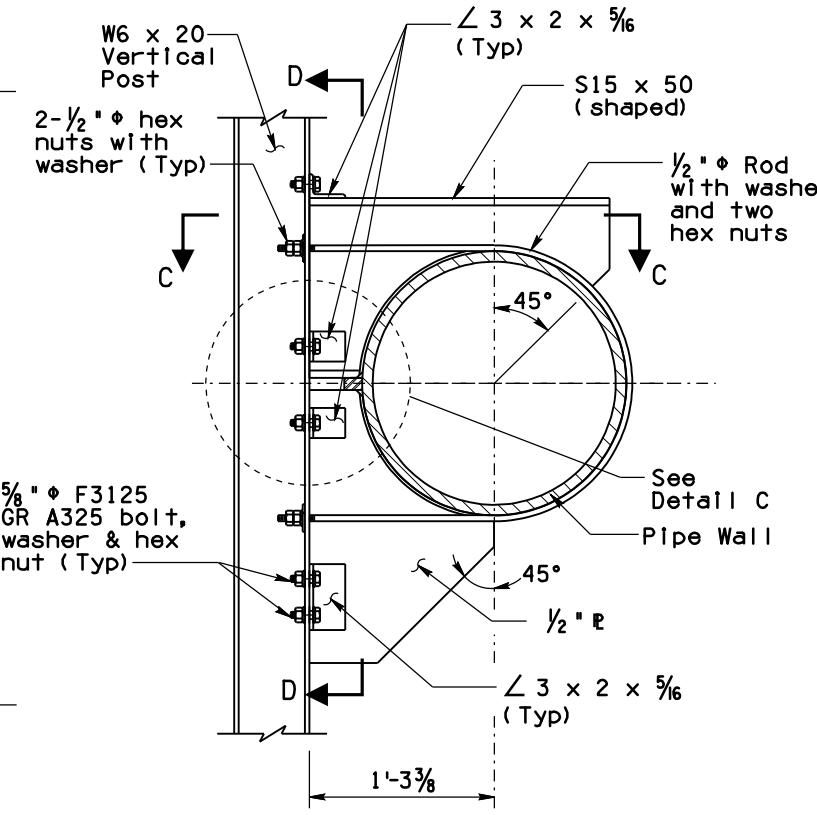


Note to Designer: The information presented in this Standard Drawing has been prepared in accordance with recognized engineering principles and is for general use. It should not be used for specific application without competent professional examination and verification of its suitability and applicability by a licensed professional engineer. Contents within the inner border line shall not be altered.

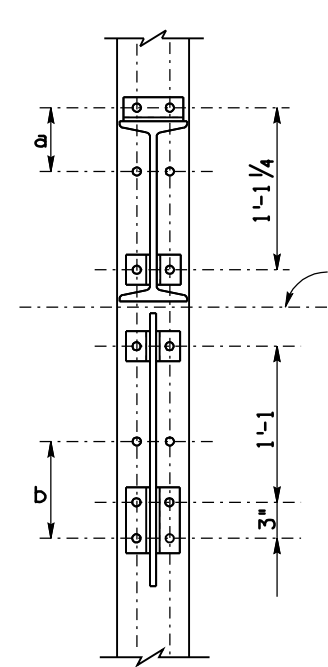
08/02
 PRIOR DISTRIBUTION DATE



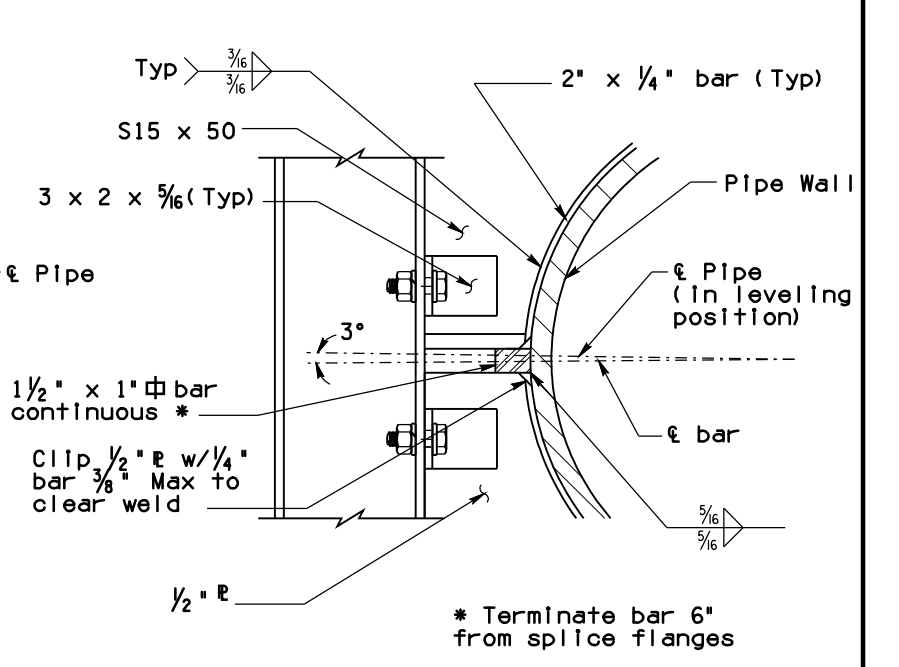
SECTION A-A



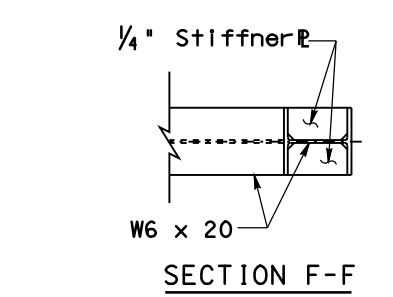
DETAIL A



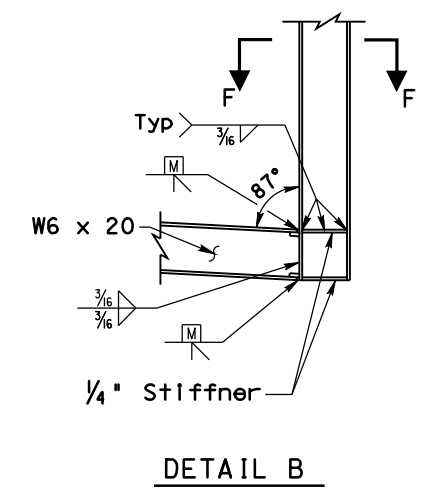
SECTION D-D



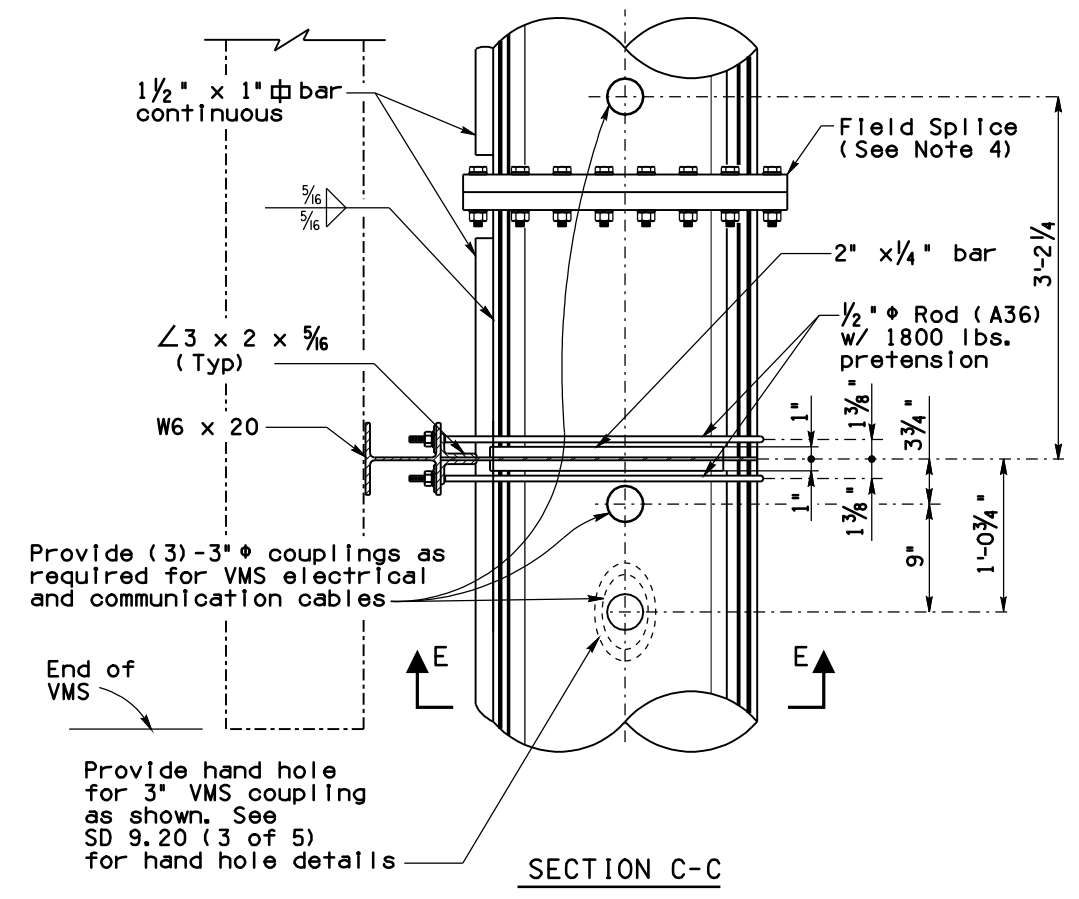
DETAIL C



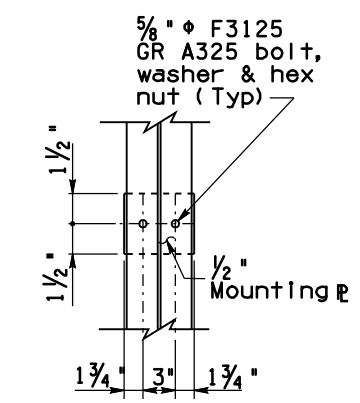
SECTION F-F



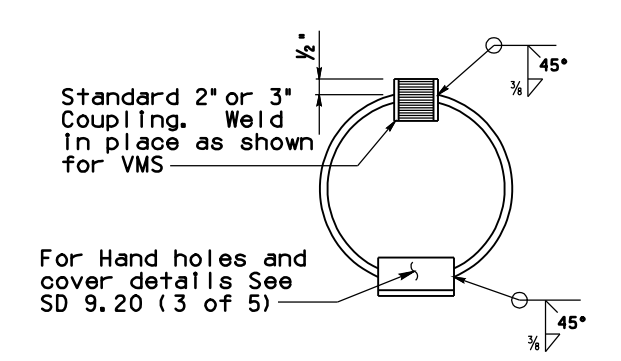
DETAIL B



SECTION C-C



SECTION G-G



SECTION E-E

NOTES:

1. See SD 9.50 (4 of 5) for handrail, post and hinge details.
2. See SD 9.50 (5 of 5) for grating and toeboard details.
3. Dimensions to be determined from VMS sign manufacturer. Grating shall extend under face of VMS sign panel.
4. Optional mast arm field splice, if any, shall not interfere with VMS panel supports, hand hole or coupling locations.

Frame Type	Nominal Pipe Dia	R	a	b
1F	12"	6 3/8"	10 1/16"	12 1/16"
2F	16"	8"	8 7/16"	11 1/16"
3F	20"	10"	6 7/16"	9 1/16"
4F	22"	11"	5 7/16"	8 1/16"

STANDARDS ENGINEER
A. ALZUBI
 RECOMMENDED FOR APPROVAL
 GROUP MANAGER
D. EBERHART
 APPROVED
 STANDARDS COMMITTEE APPROVED FOR DISTRIBUTION 04/19 DATE

ARIZONA DEPARTMENT OF TRANSPORTATION
 INFRASTRUCTURE DELIVERY AND OPERATIONS DIVISION
 BRIDGE GROUP STANDARD DRAWING

VARIABLE MESSAGE SIGN
 TUBULAR FRAME
 MOUNTING DETAILS

DRAWING NO.
SD 9.50
 (2 of 5)