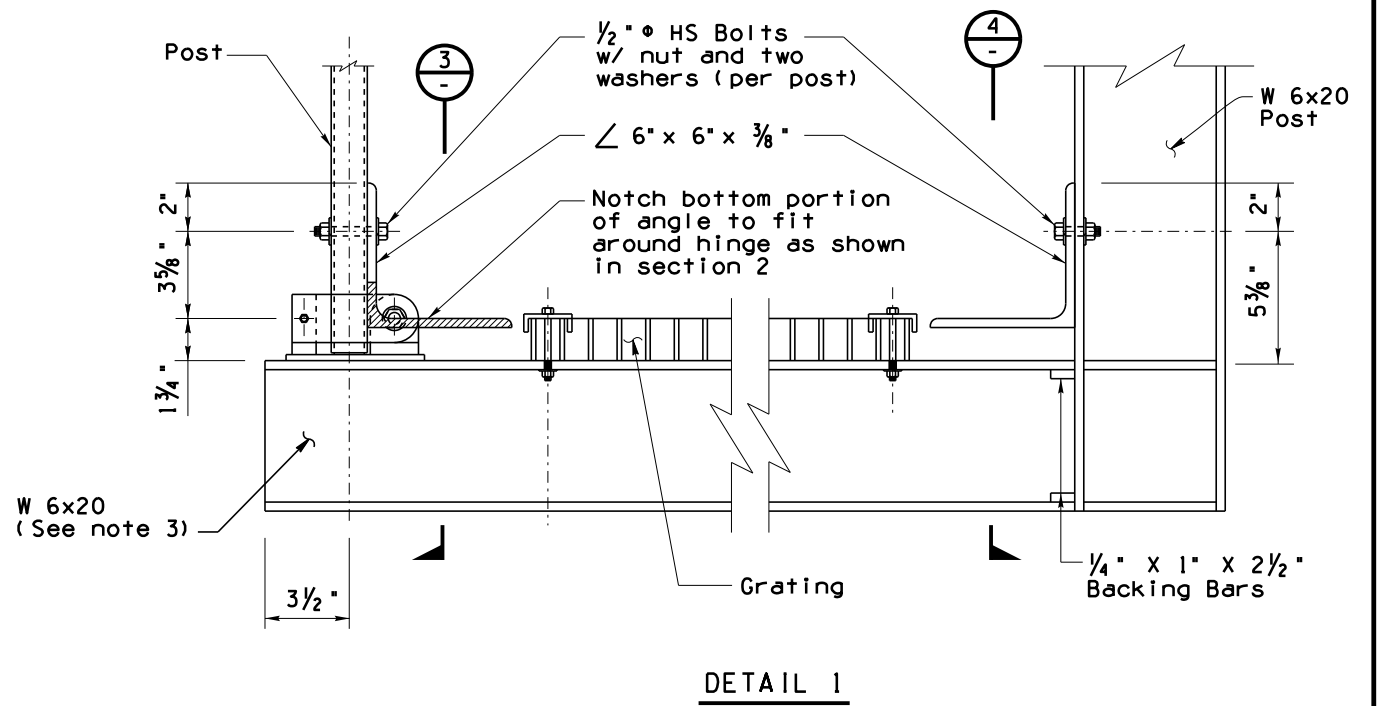
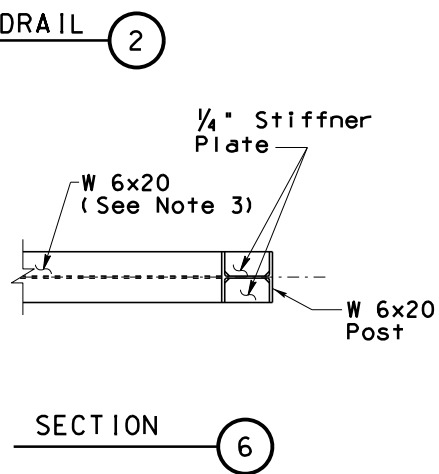
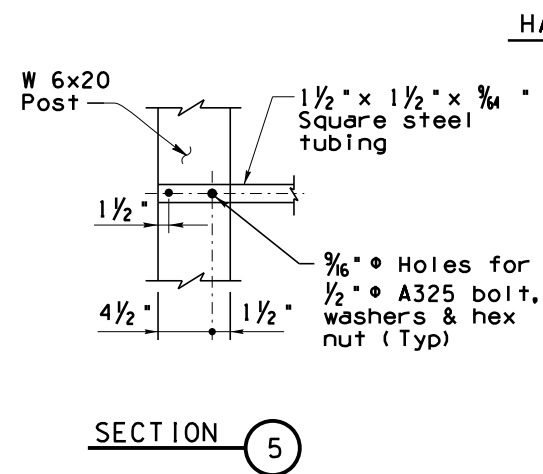
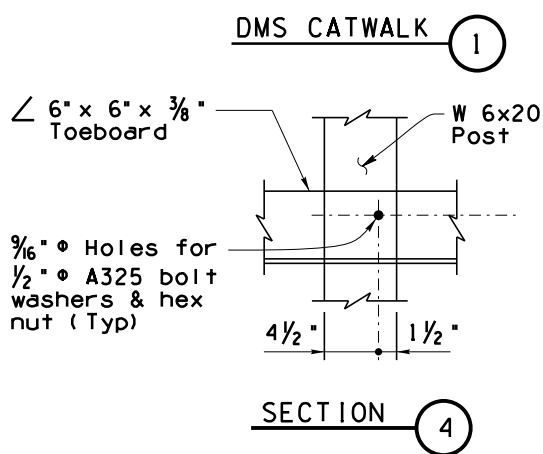
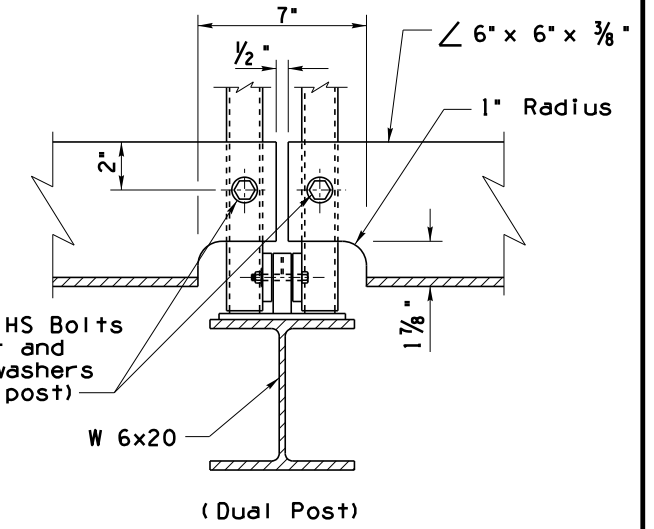
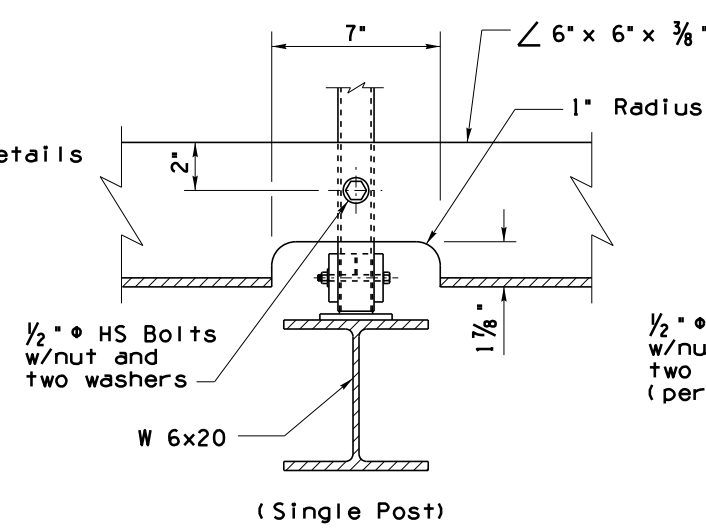
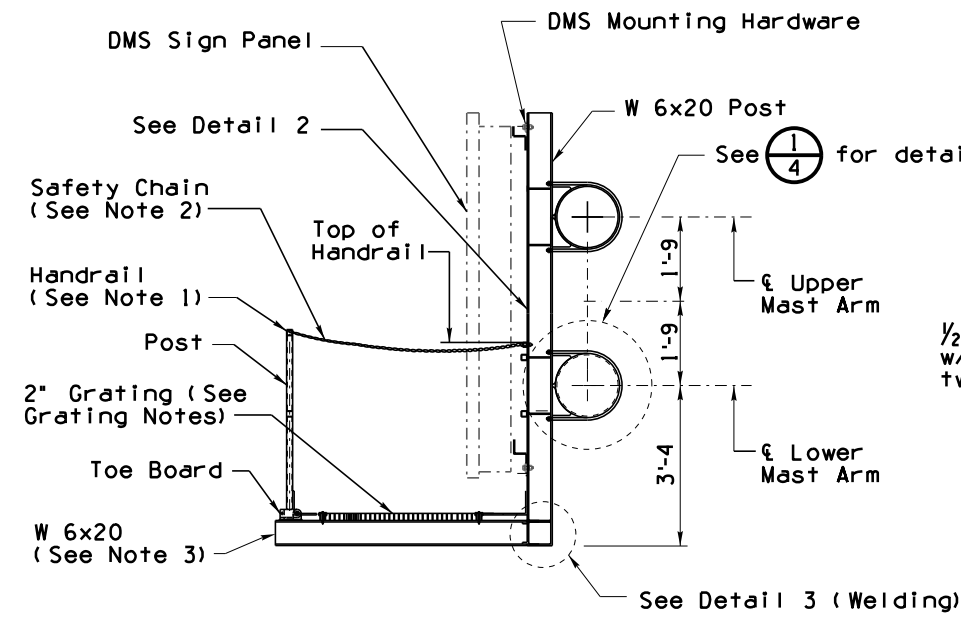
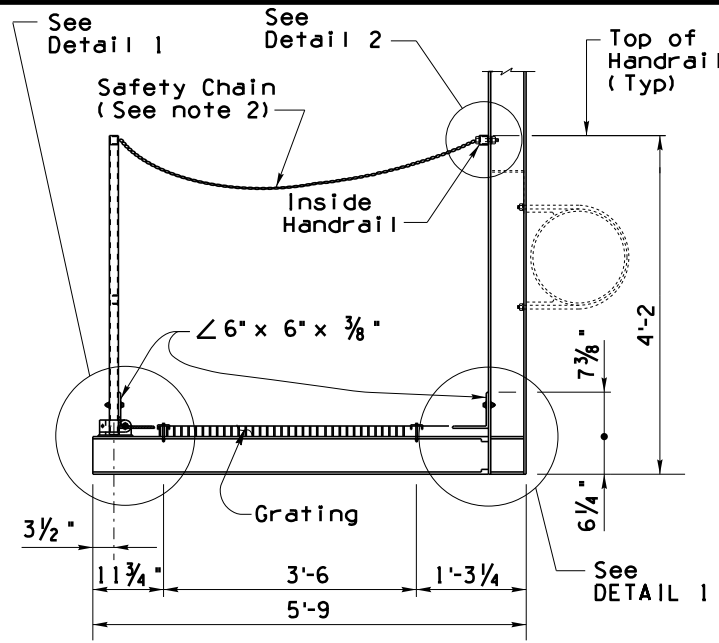


Note to Designer: Information presented in this Standard Drawing has been prepared in accordance with recognized engineering principles and is for general use. It should not be used for specific application without competent professional examination and verification of its suitability and applicability by a licensed professional engineer. Contents within the inner border line shall not be altered.



GRATING NOTES:

Welded grating shall meet the standard requirements of ANS/NAAMM MGB 531-00. Grating shall be 2" x 3/16" bearing bars at 1 3/16" centers and cross bars at 4" centers.

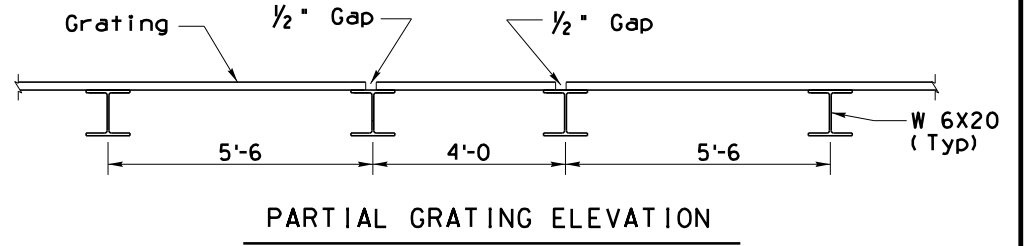
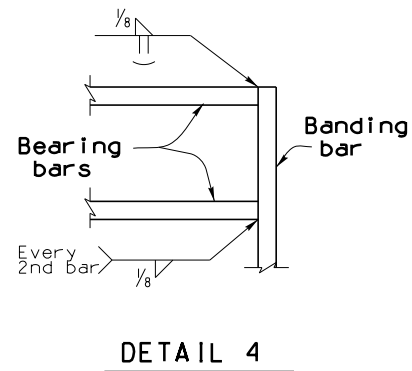
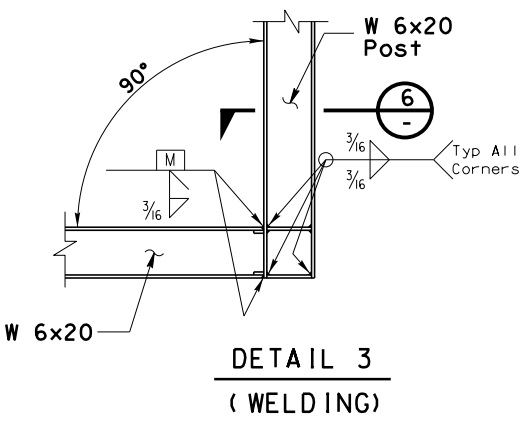
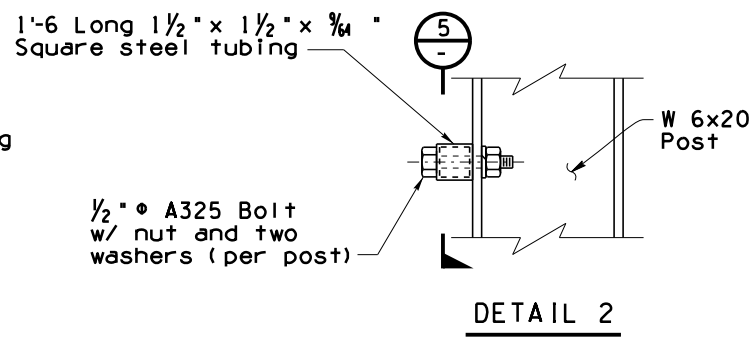
All grating shall have 2" x 3/16" banding bars at both ends.

Weld bearing bars to banding bars with 1/8" fillet weld, one side every second bar and as shown in Detail 3.

All grating to be straight and true after fabrication. Grating shall be galvanized.

NOTES:

- The field splice surface shall be in full contact without gaps prior to the bolts being snug tightened and fully tensioned. The contact surface is the area defined by a 1 3/8" radius around each bolt.
- 3/16" galvanized safety chain with 1- 1/4" snap hook at end of catwalks.
- Omit horizontal W 6x20, backing bars and stiffeners when Catwalk is specifically omitted on Traffic Plans.



STANDARDS ENGINEER
A. ALZUBI
 RECOMMENDED FOR APPROVAL
 GROUP MANAGER
 APPROVED
D. EBERHART
 STANDARDS COMMITTEE APPROVED FOR DISTRIBUTION
 DATE 03/22

ARIZONA DEPARTMENT OF TRANSPORTATION
 INFRASTRUCTURE DELIVERY AND OPERATIONS DIVISION
 BRIDGE GROUP STANDARD DRAWING
 DYNAMIC MESSAGE SIGN
 BUTTERFLY
 CATWALK DETAILS
 DRAWING NO.
SD 9.60
 (7 of 7)