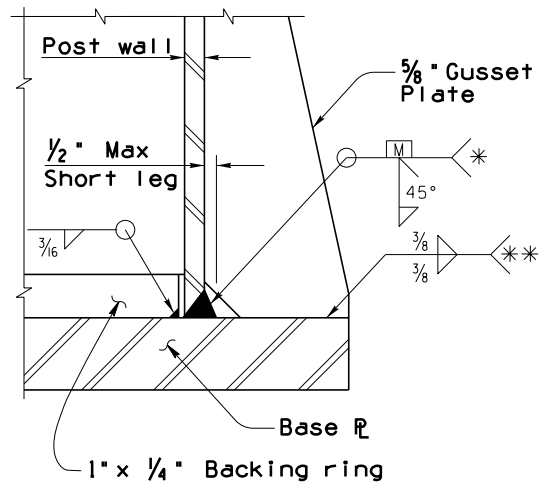
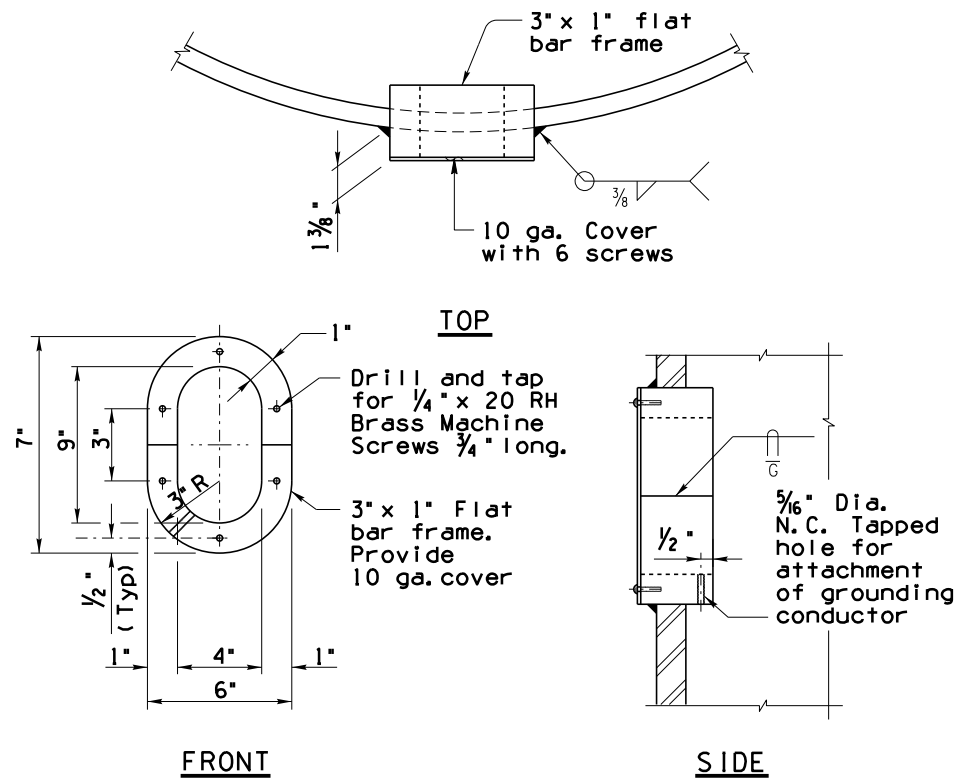


Note to Designer: The information presented in this Standard Drawing has been prepared in accordance with recognized standards and practices and is intended for general use. It is not intended for application without the approval of a professional engineer. Contents within the inner border line shall not be altered.

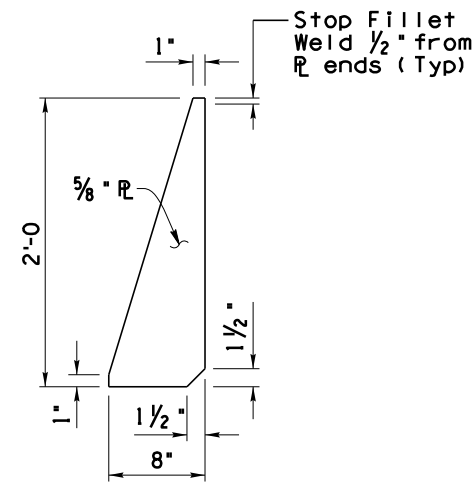
* Preheat per AWS requirements



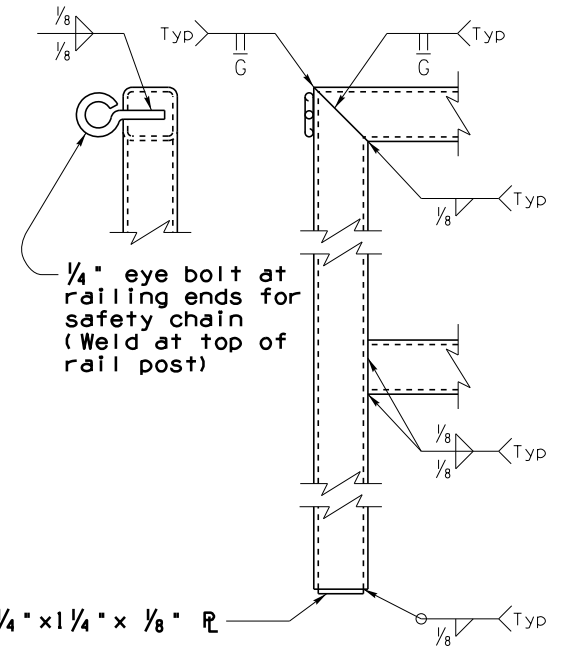
POST TO BASE PLATE WELDING ①



HAND HOLE & COVER DETAILS ③

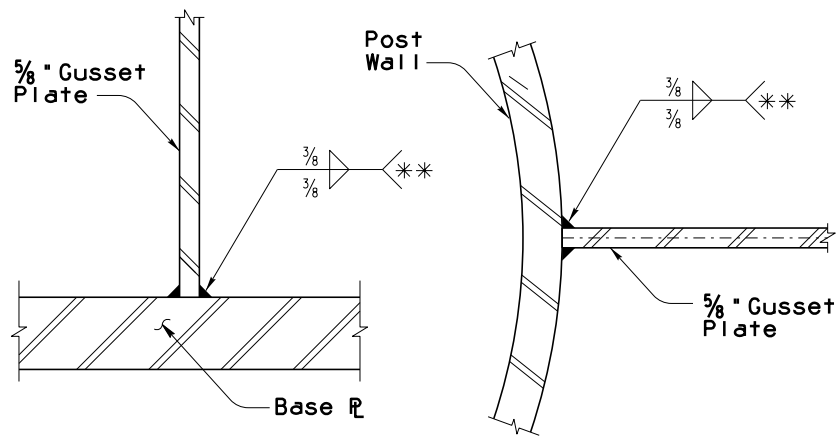


GUSSET PLATE DETAIL ④
For location of Gusset Plates, See SD 9.60 (2 of 5).

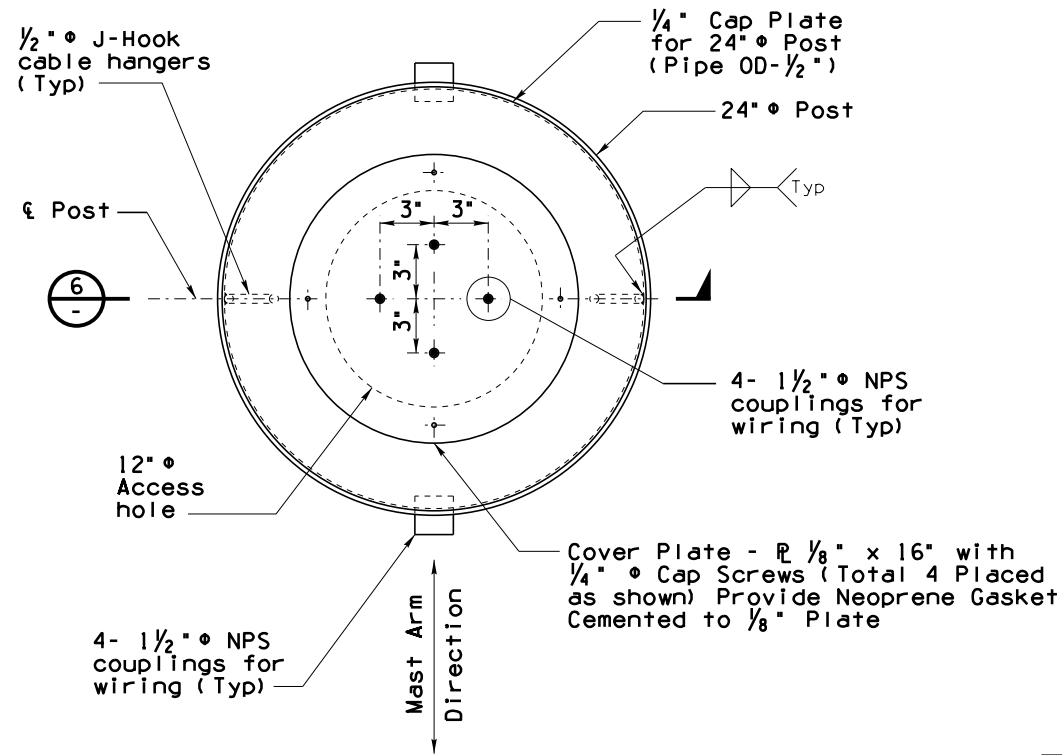


HANDRAIL WELD DETAILS

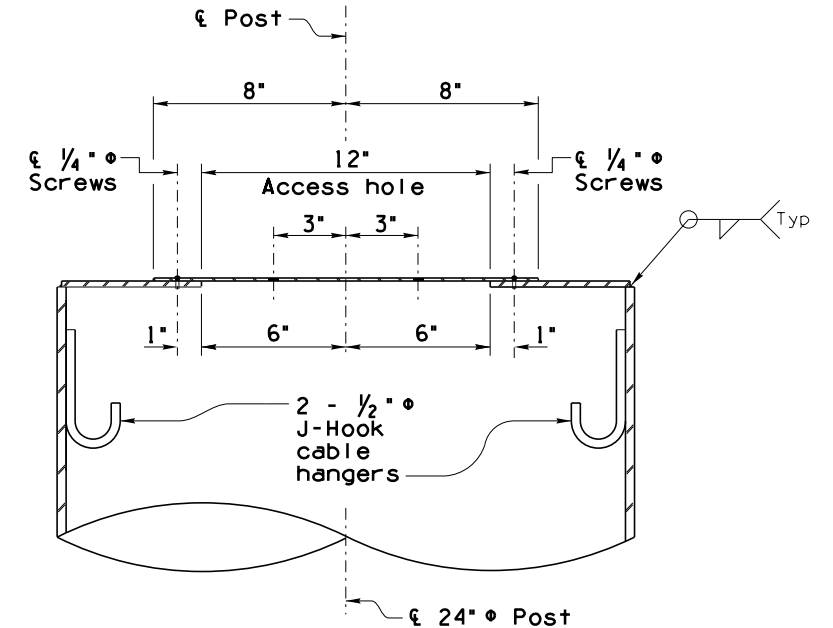
** Stop fillet weld 1/2 inch from plate ends



GUSSET PLATE WELDING ②



CAP PLATE DETAIL ⑤



POST CAP PLATE SECTION DETAIL ⑥
Post NPS couplers not shown for clarity

STANDARDS ENGINEER
A. ALZUBI
 RECOMMENDED FOR APPROVAL
 GROUP MANAGER
D. EBERHART
 APPROVED
 STANDARDS COMMITTEE APPROVED FOR DISTRIBUTION 03/22 DATE

ARIZONA DEPARTMENT OF TRANSPORTATION
 INFRASTRUCTURE DELIVERY AND OPERATIONS DIVISION
 BRIDGE GROUP STANDARD DRAWING

**DYNAMIC MESSAGE SIGN
 BUTTERFLY
 MISCELLANEOUS DETAILS**

DRAWING NO.
**SD 9.60
 (5 of 7)**

PRIOR DISTRIBUTION DATE