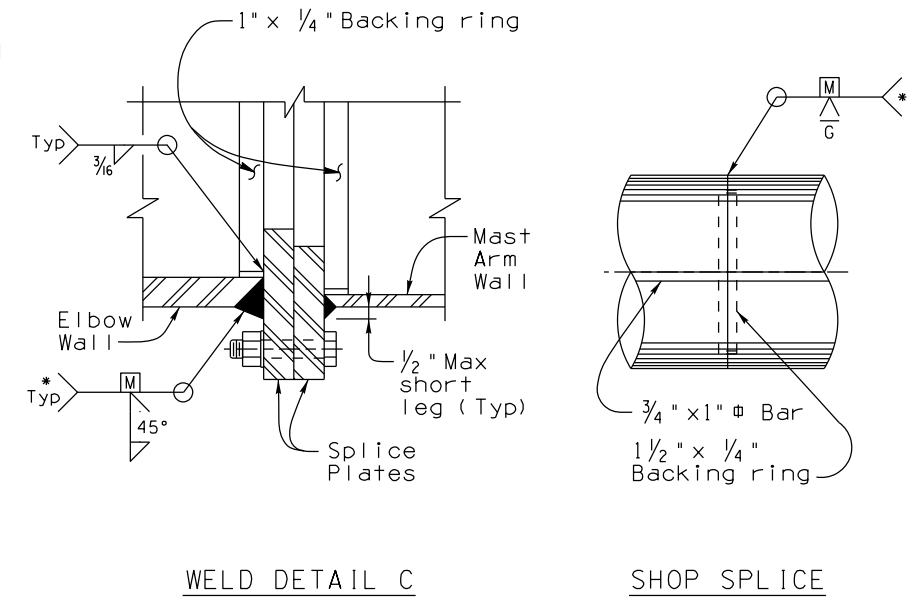
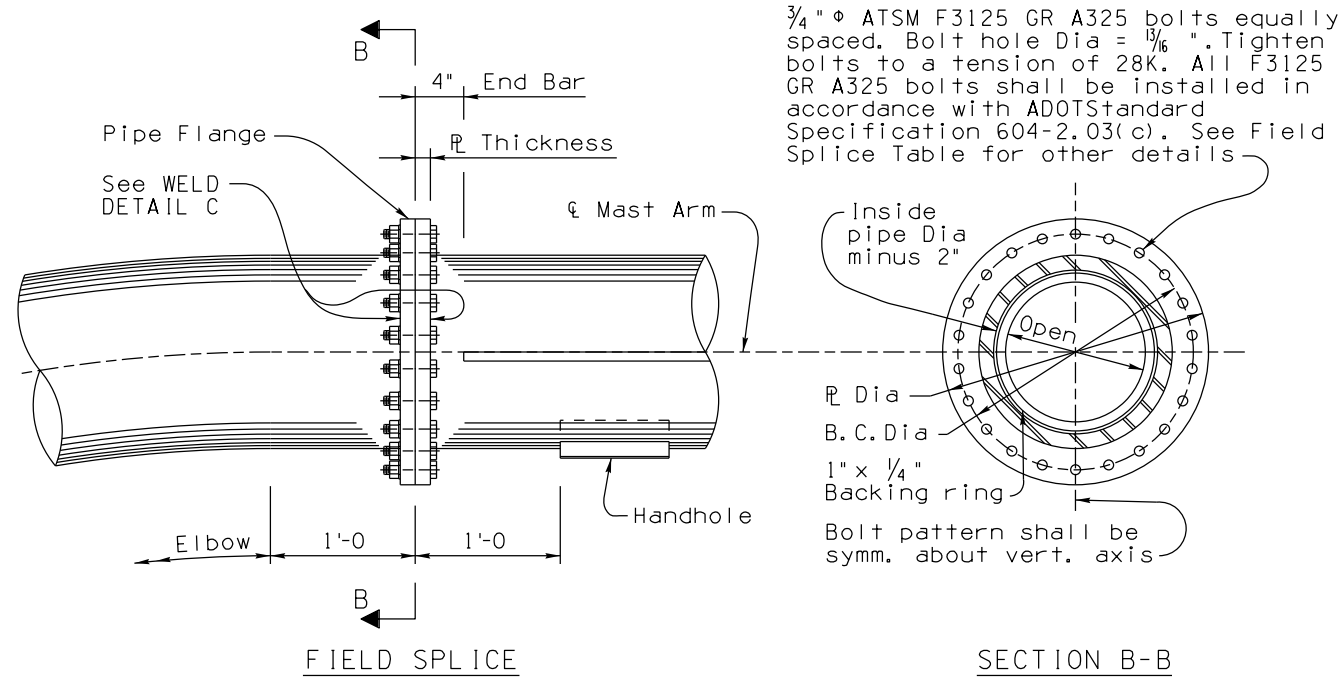
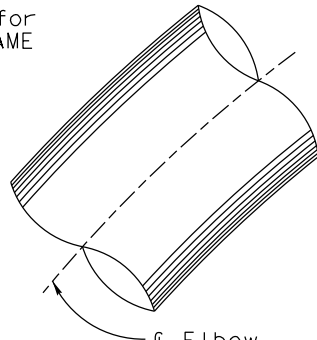


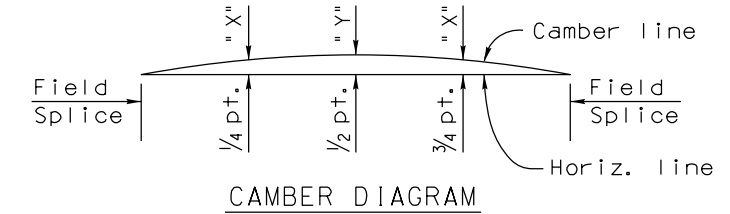
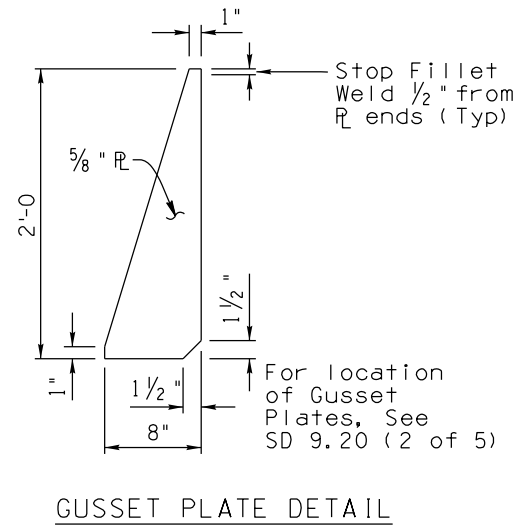
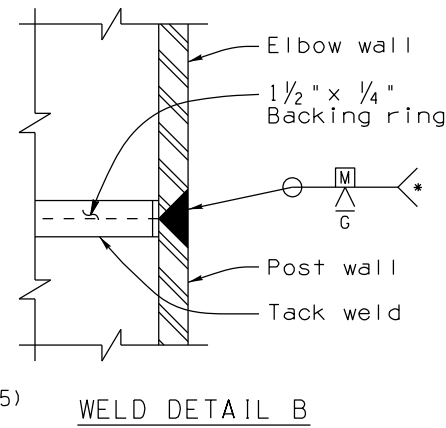
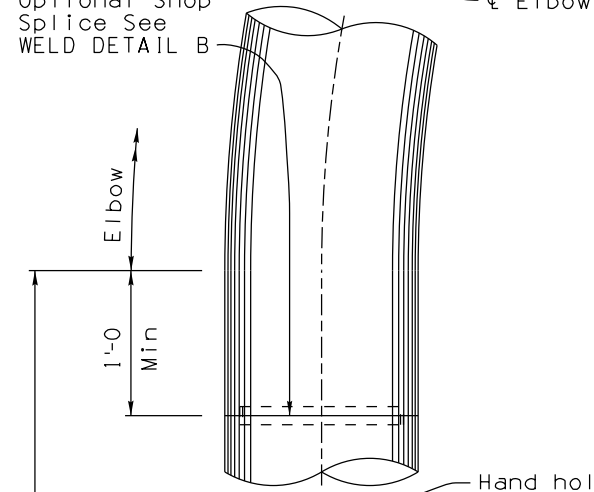
Field Splice					
Frame Type	Pipe Dia	R Dia	R Thickness	No. of Bolts	B. C. Dia
1F	12"	18"	1"	16	15 1/2"
2F	16"	22"	1 1/4"	22	19 1/2"
3F	20"	26"	1 3/8"	29	23 1/2"
4F	22"	28"	1 1/2"	31	25 1/2"

NOTE:

Provide hand holes for TUBULAR OVERHEAD FRAME on one side only. For HAND HOLE & COVER DETAILS See SD 9.20 (4 of 5)



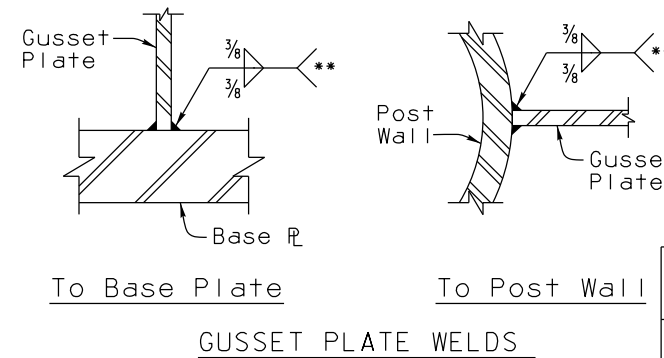
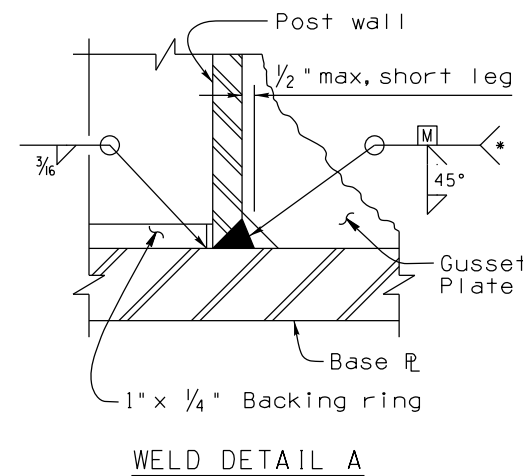
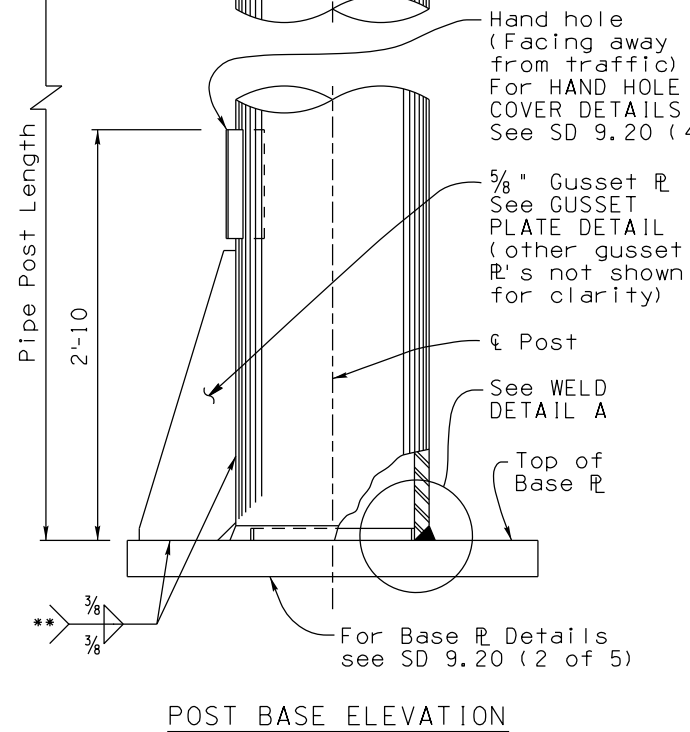
Optional Shop Splice See WELD DETAIL B



Camber shown is required to be built into horizontal members. Members shall be erected so that camber is provided above the Horizontal line

TUBULAR FRAME CAMBER (INCHES)											
Frame Type	1F	1F	2F	2F	2F	3F	3F	3F	4F	4F	4F
Span	40'-0"	70'-0"	46'-0"	58'-0"	70'-0"	82'-0"	94'-0"	106'-0"	118'-0"	130'-0"	142'-0"
"X"	3/4"	2"	1/2"	1"	1 1/2"	1 3/4"	2 1/2"	3 1/2"	4"	6"	7 3/4"
"Y"	1 1/2"	2 1/2"	3/4"	1 1/4"	2"	2 1/4"	3 1/2"	4 3/4"	6"	8 1/4"	11 1/4"

Calculated camber provides for deflections due to dead load of tubular structure and dead loads due to sign panels and attachments. For spans other than shown, interpolate for "X" and "Y" dimensions



* Preheat per AWS requirements

** Stop Fillet Weld 1/2" from R ends

STANDARDS ENGINEER A. ALZUBI
RECOMMENDED FOR APPROVAL GROUP MANAGER D. BENTON
APPROVED
STANDARDS COMMITTEE APPROVED FOR DISTRIBUTION

ARIZONA DEPARTMENT OF TRANSPORTATION INFRASTRUCTURE DELIVERY AND OPERATIONS DIVISION BRIDGE GROUP STANDARD DRAWING	
TUBULAR SIGN STRUCTURES TUBULAR FRAME POST AND MAST ARM DETAILS	DRAWING NO. SD 9.20 (3 of 5)

Note to Designer: The information presented in this Standard Drawing has been prepared in accordance with recognized engineering principles and is for general use. It should not be used for specific application without competent professional examination and verification of its suitability and applicability by a licensed professional engineer. Contents within the inner border line shall not be altered.

PRIOR DISTRIBUTION DATE 03/11