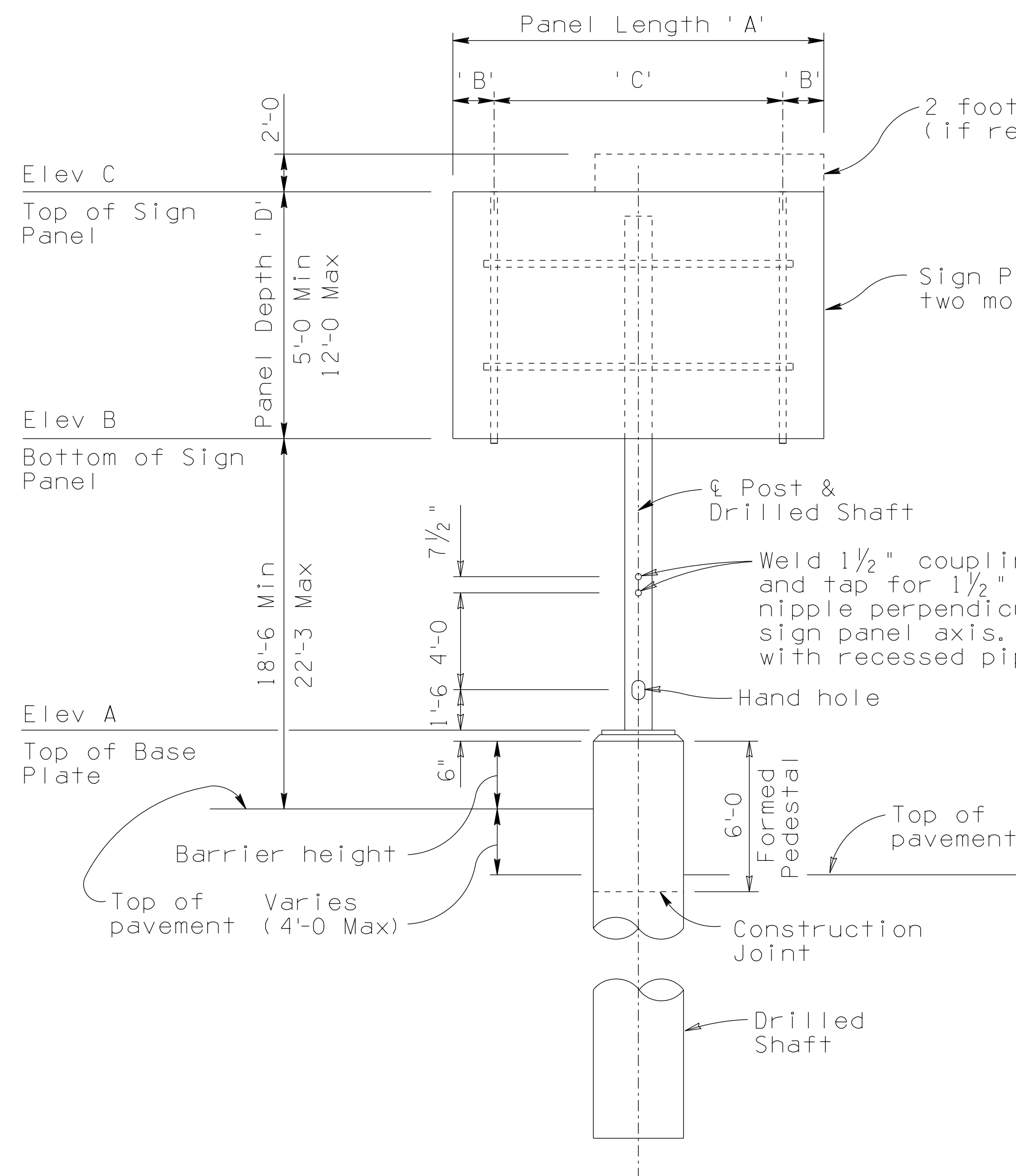
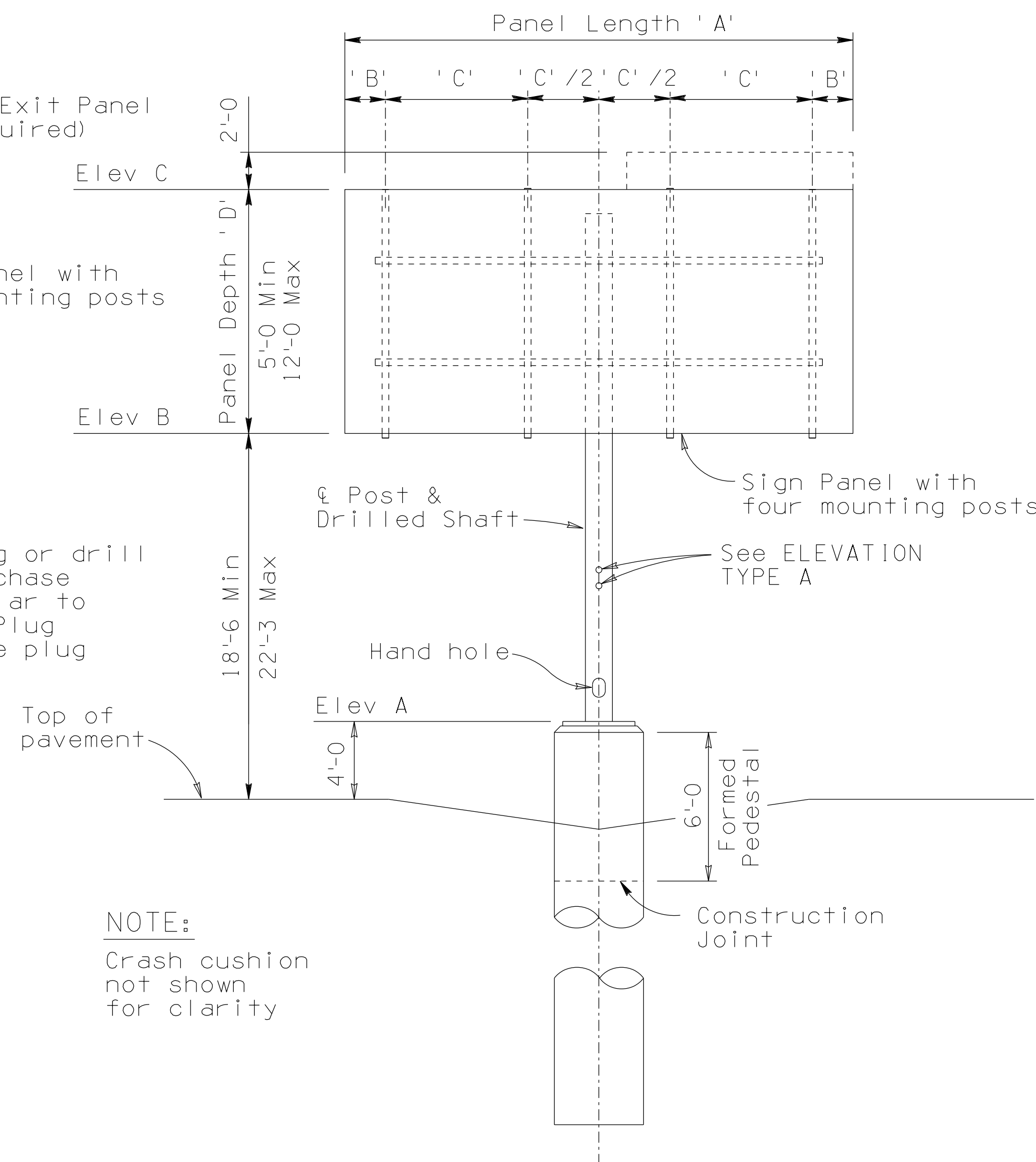


Note to Designer: The information presented in this Standard Drawing has been prepared in accordance with recognized engineering principles and is for general use. It should not be used for specific application without competent professional examination and verification of its suitability and applicability by a licensed professional engineer. Contents within the inner border line shall not be altered.

PRIOR DISTRIBUTION DATE 04/19



ELEVATION - TYPE A
Shown with median barrier



ELEVATION - TYPE B
Shown without median barrier

NOTE:
Crash cushion not shown for clarity

	Dimensions	Nominal Pipe Dia inches	Pipe Wall thickness inches			
				'A'	'B'	'C'
Type A	2 Mounting Posts	8'-0"	1'-6"	5'-0"	14	0.938
		9'-0"	1'-9"	5'-6"	14	0.938
		10'-0"	2'-0"	6'-0"	14	0.938
		11'-0"	2'-0"	7'-0"	14	0.938
		12'-0"	2'-3"	7'-6"	14	0.938
Type B	4 Mounting Posts	13'-0"	2'-6"	8'-0"	14	0.938
		14'-0"	1'-0"	4'-0"	16	1.031
		15'-0"	1'-0"	4'-4"	16	1.031
		16'-0"	1'-0"	4'-8"	16	1.031
		17'-0"	1'-0"	5'-0"	16	1.031
		18'-0"	1'-0"	5'-4"	16	1.031
		19'-0"	1'-0"	5'-8"	16	1.031
		20'-0"	1'-6"	5'-8"	16	1.031
		21'-0"	1'-6"	6'-0"	20	0.750
		22'-0"	1'-6"	6'-4"	20	0.750
23'-0"	1'-6"	6'-8"	20	0.750		
24'-0"	1'-6"	7'-0"	20	0.750		
25'-0"	2'-0"	7'-0"	20	0.750		

PAY ITEM NOTES:

Pay Item for sign structure foundation includes the drilled shaft and the formed pedestal on drilled shaft and the anchor bolt assembly.

Item No. 6060163 SIGN STRUCTURE (MEDIAN) (TWO SIDED)
Measure: Each

Item No. 6060239 FOUNDATION FOR SIGN STRUCTURE (MEDIAN)
Measure: Each

Drilled shaft locations and top of drilled shaft elevations shall be field verified by the Contractor prior to fabrication of posts

GENERAL NOTES:

Construction Specification - Arizona Department of Transportation Standard Specifications for Road and Bridge Construction, latest Edition.

Design Specifications - AASHTO Standard Specification for Structural Supports for Highway Signs, Luminaires, and Traffic Signals, 6th Edition (2013), including the 2015, 2019, and 2020 interim Revisions.

All tubular structural cantilever pipe shall be welded or seamless steel pipe and shall conform to ASTM Specification (Fy = 35,000 psi):

A-53	Grade B,	Type E or S
A252	Grade 2,	Type E or S
A106	Grade B,	Type S only
API 5L	Grade B,	Type E or S
API 5LX	Grade X42,	Type E or S

All other Structural Steel shall conform to ASTM Specification A36 unless noted otherwise.

All bolts shall conform to ASTM Specification F3125 GR A325.

All bolts, nuts and washers shall be galvanized in accordance with the requirements of ASTM A153. All other steel shall be galvanized after fabrication in accordance with ASTM A123.

Welding of structural tubing shall conform to the requirements of the American Welding Society, Structural Welding Code, D1.1, latest Edition.

All welding shall be continuous unless noted otherwise. All butt welds shall be full penetration using prequalified welding procedures and shall be tested by ultrasonic testing. All butt welds shall be ground flush, full width.

Grinding striations shall be parallel to the length of member.

The Column to base plate weld (WELD DETAIL A) shall be tested by ultrasonic testing. Any detected shallow toe cracks shall be repaired in the shop.

All Concrete shall be Class "S" (f'c = 3500 psi).

Reinforcing steel shall conform to ASTM Specification A615. All reinforcing shall be furnished as Grade 60.

All bends and hooks shall meet the requirements of AASHTO LRFD Article 5.10. All bend dimensions for reinforcing steel shall be out-to-out of bars. All placement dimensions for reinforcing steel shall be to center of bars unless noted otherwise.

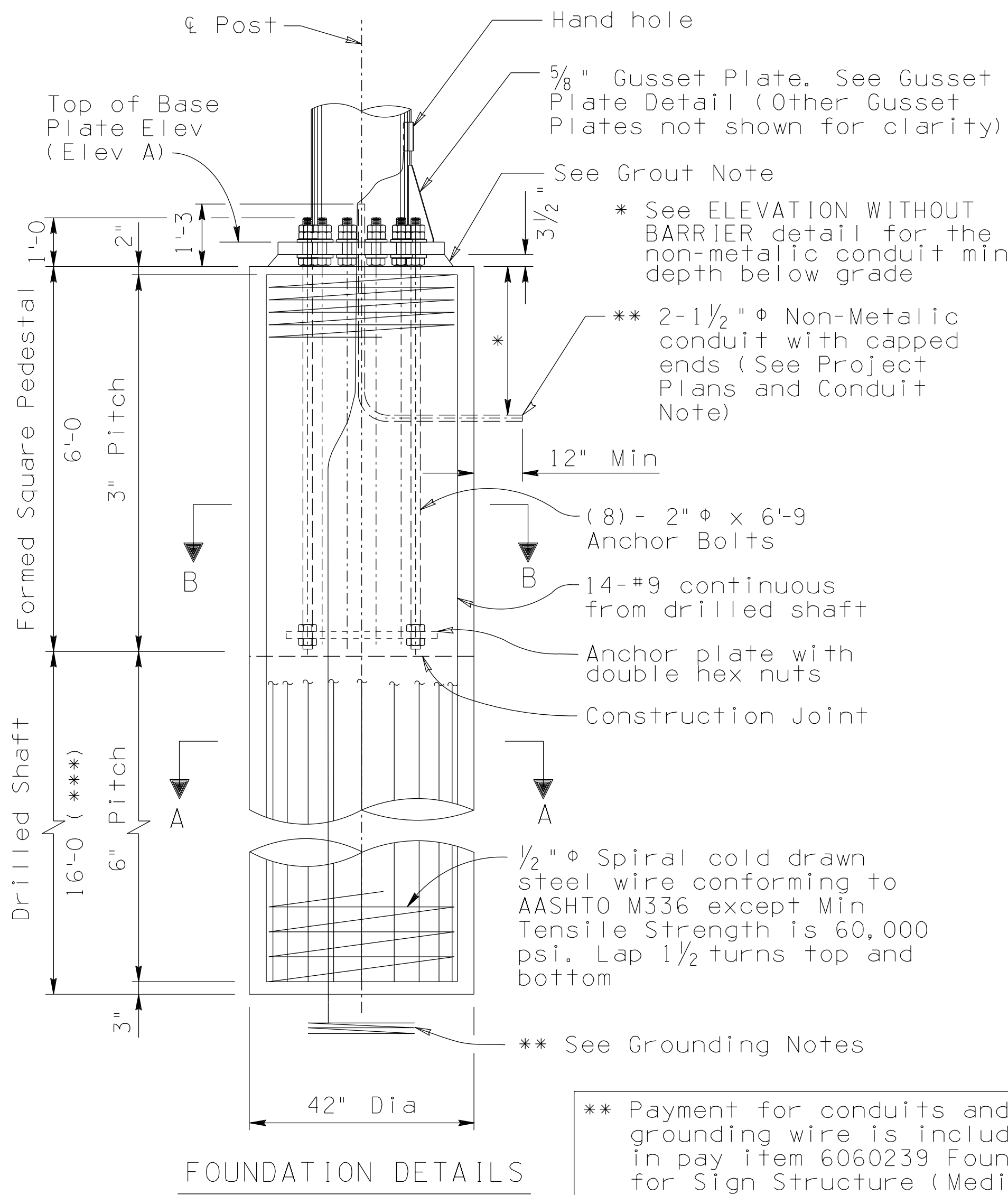
Project Plans shall provide an elevation view of each sign structure with location (station and offset), Elev A, Elev B, Elev C, and Sign panel dimensions ('A', and 'D').

See Project Plans for length and location of exit panels, if required.

Dimensions shall not be scaled from drawings.

STANDARDS ENGINEER A. ALZUBI	ARIZONA DEPARTMENT OF TRANSPORTATION INFRASTRUCTURE DELIVERY AND OPERATIONS DIVISION BRIDGE GROUP STANDARD DRAWING	
RECOMMENDED FOR APPROVAL GROUP MANAGER D. EBERHART	MEDIAN SIGN STRUCTURE (TWO SIDED) ELEVATION AND NOTES	DRAWING NO. SD 9.01 (1 of 5)
APPROVED STANDARDS COMMITTEE APPROVED FOR DISTRIBUTION		DATE 11/22

Note to Designer: The information presented in this Standard Drawing has been prepared in accordance with recognized engineering principles and is for general use. It should not be used for specific application without competent professional examination and verification of its suitability and applicability by a licensed professional engineer. Contents within the inner border line shall not be altered.



NOTES:

All anchor bolts shall conform to ASTM F1554 Grade 55 Specifications. The upper 1'-2 and lower 6" shall be threaded. The upper 1'-8 shall be galvanized in accordance with the requirements of ASTM A153.

Provide 2 Hardened Steel washers, 2 Hex nuts and one leveling nut for each bolt. At final position of post, all top and bottom anchor bolt nuts shall be wrench tightened against base plate.

Drilled shaft concrete shall be class 'S' concrete and placed against undisturbed material or compacted embankment.

Provide bolt template during installation of anchor bolts. The bolt template shall be fabricated of 1/4" thick (Min) steel plate, similar to anchor plate details, and both the bolt template and the anchor plate shall be drilled to match the base plate.

GROUNDING NOTES:

A 25 feet long coil of No. 4 AWG bare copper grounding wire shall be installed before concrete is poured and shall be connected to the post grounding screw in the hand hole.

The grounding wire shall be installed on the outside of the conduit.

CONDUIT NOTE:

If the project plans do not call out for the installation of a conduit, 2-1/2" diameter non-metallic conduits shall be stubbed out 30" below grade. The stubbed conduit shall be perpendicular to traffic direction, be a minimum of 12" from edge of foundation cap, and the conduit ends shall be capped.

GROUT NOTE:

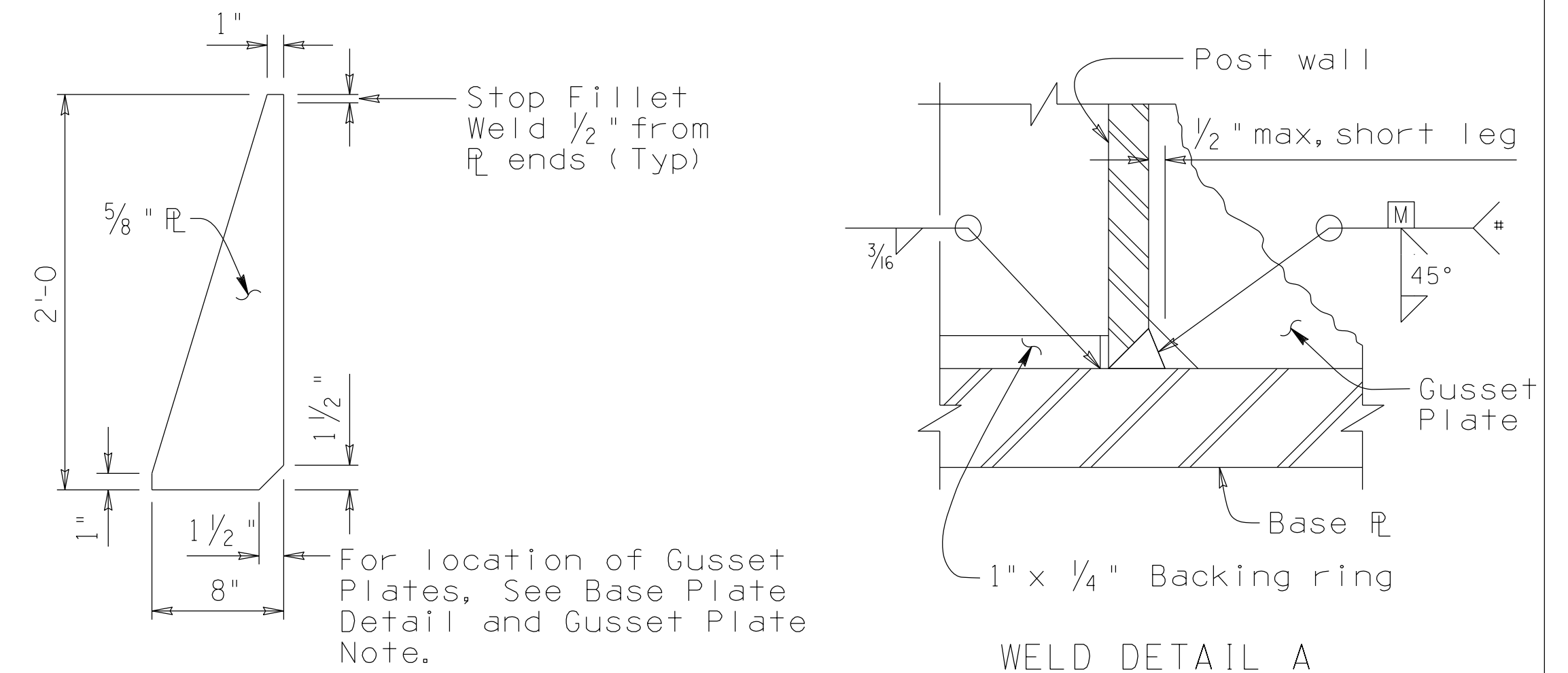
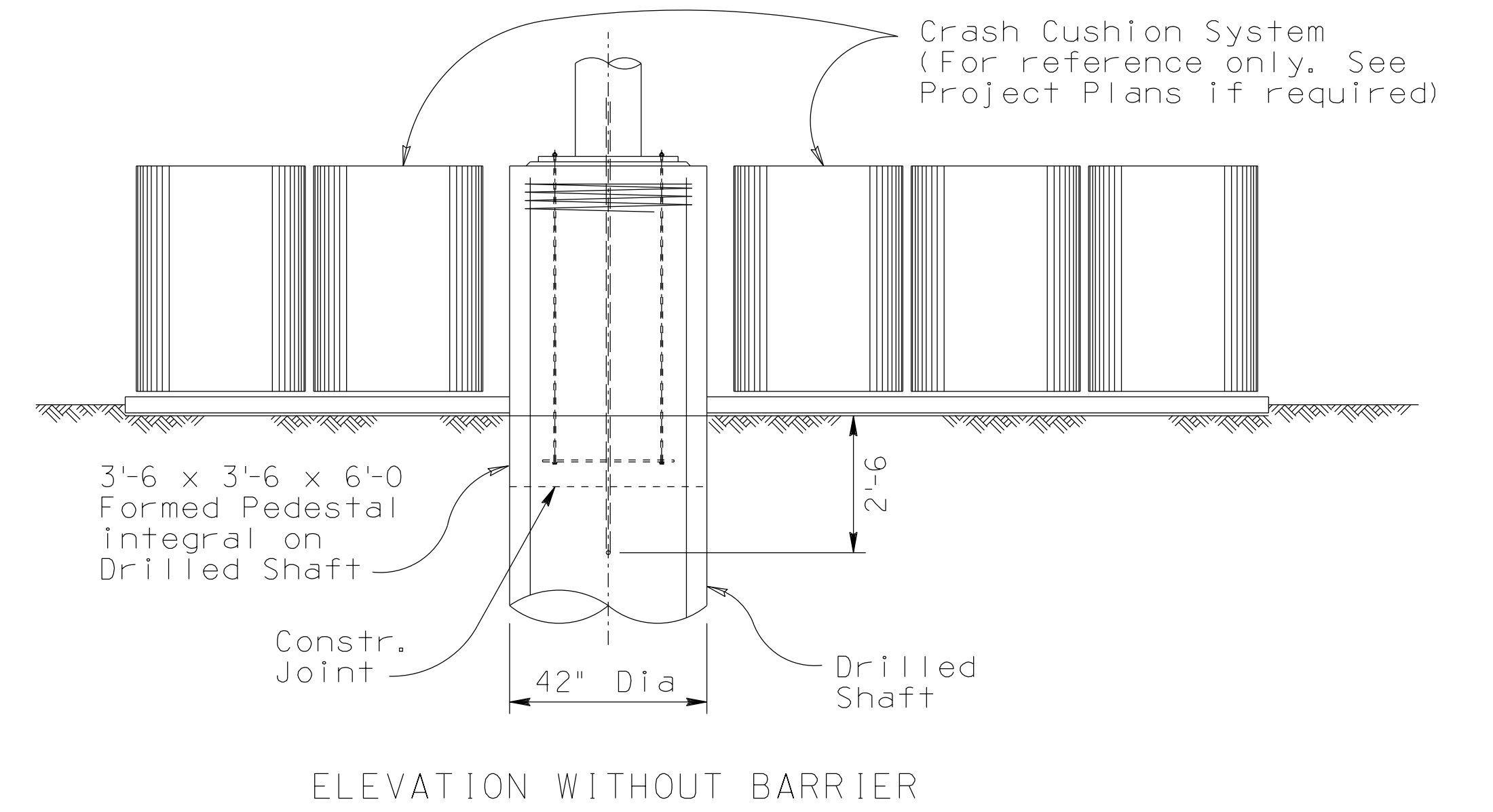
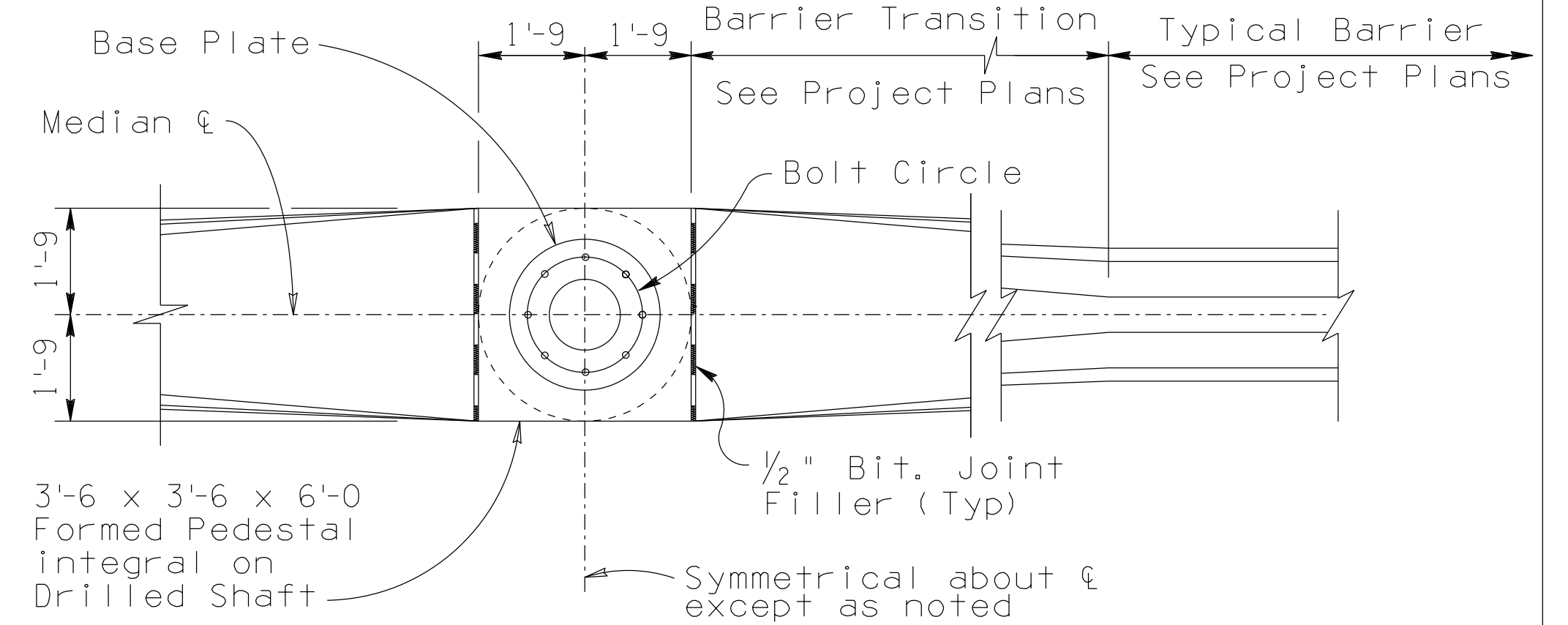
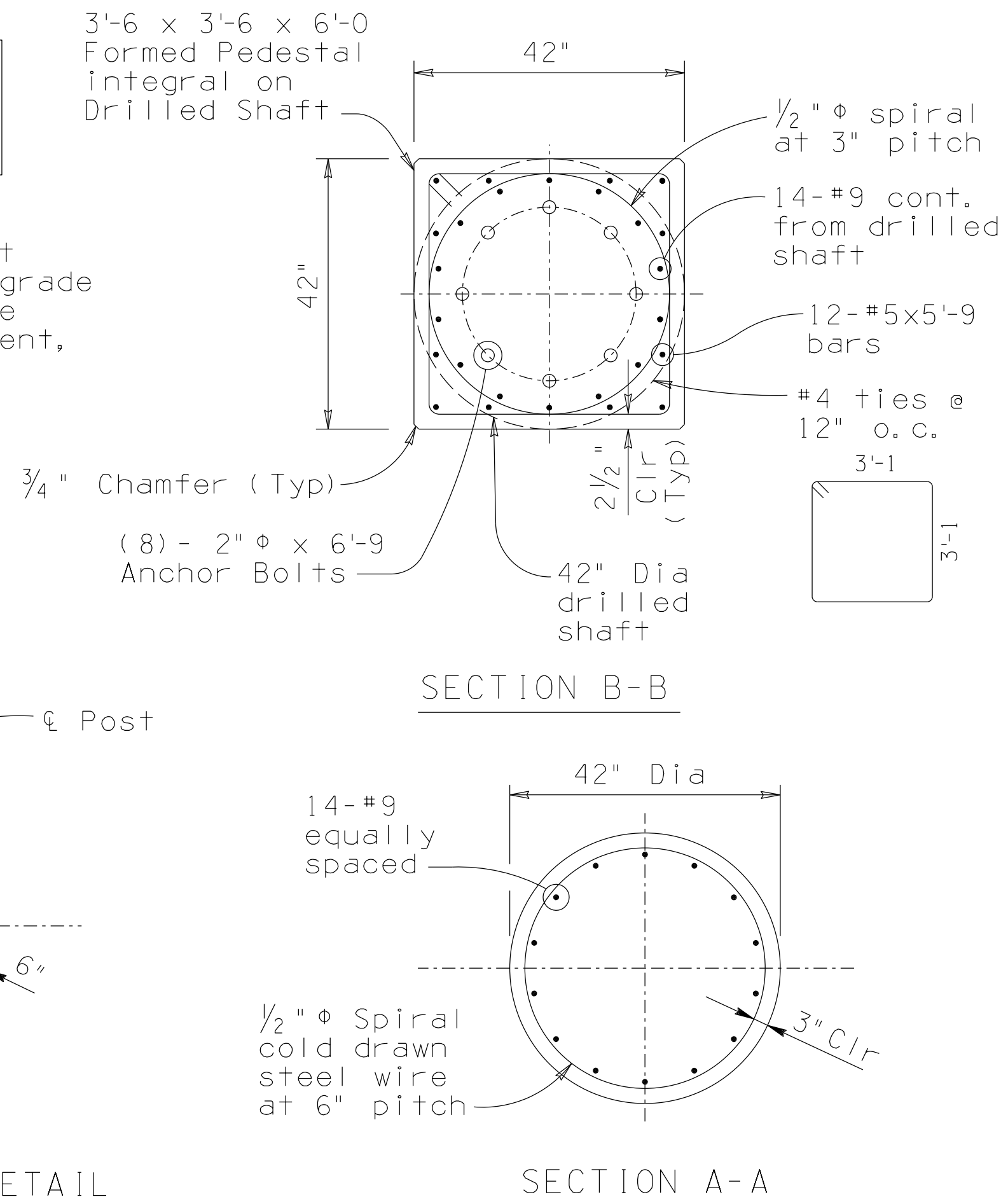
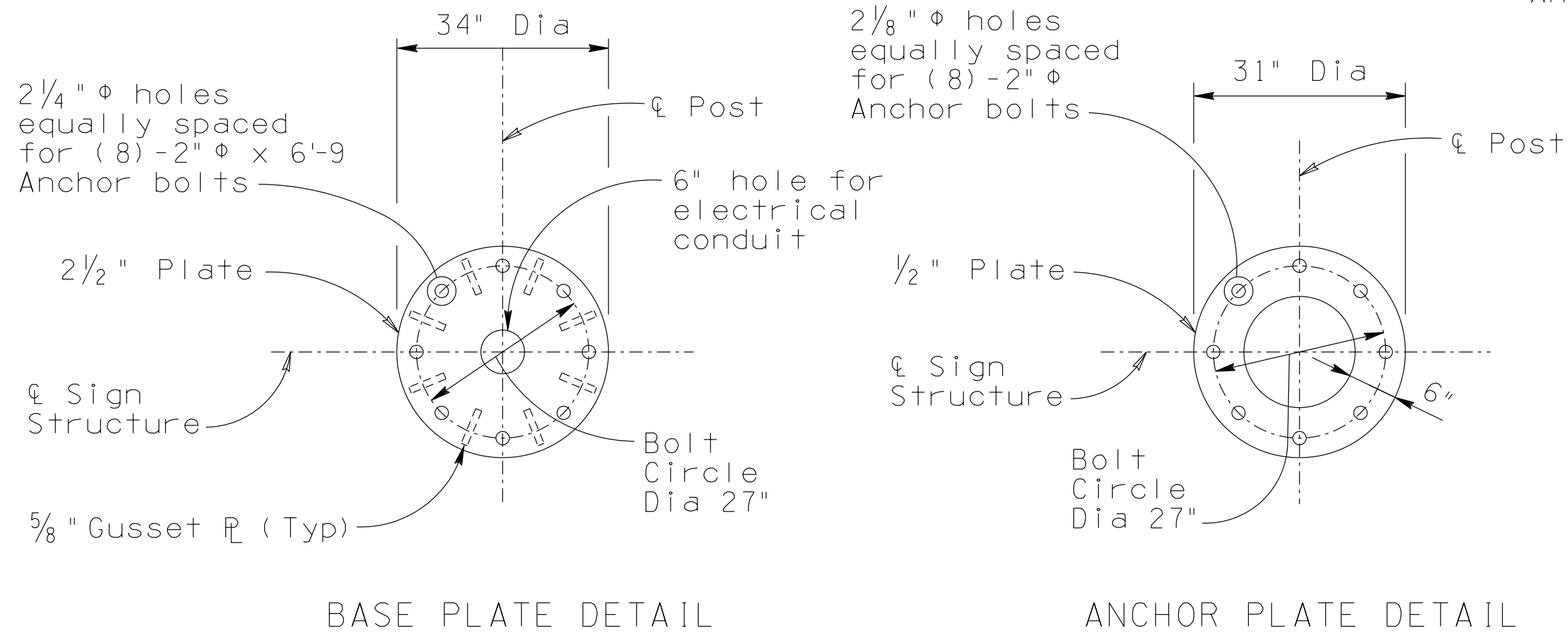
Space to be filled with non-shrink grout after tubular structure is permanently erected.

** Payment for conduits and grounding wire is included in pay item 6060239 Foundation for Sign Structure (Median).

(***) Drilled shaft depth is based on uniform soils condition with unit weight = 110 pcf, friction angle phi = 29 degrees, modulus of subgrade reaction K=50 psf/ft. Depth or design of the drilled shaft shall be revised by the Engineer of Record for weaker soils or rock embedment, and all revision shall be shown on the project plans.

GUSSET PLATE NOTE:

Gusset plates shall be placed perpendicular to base plate and post face, and centered between anchor bolt holes.

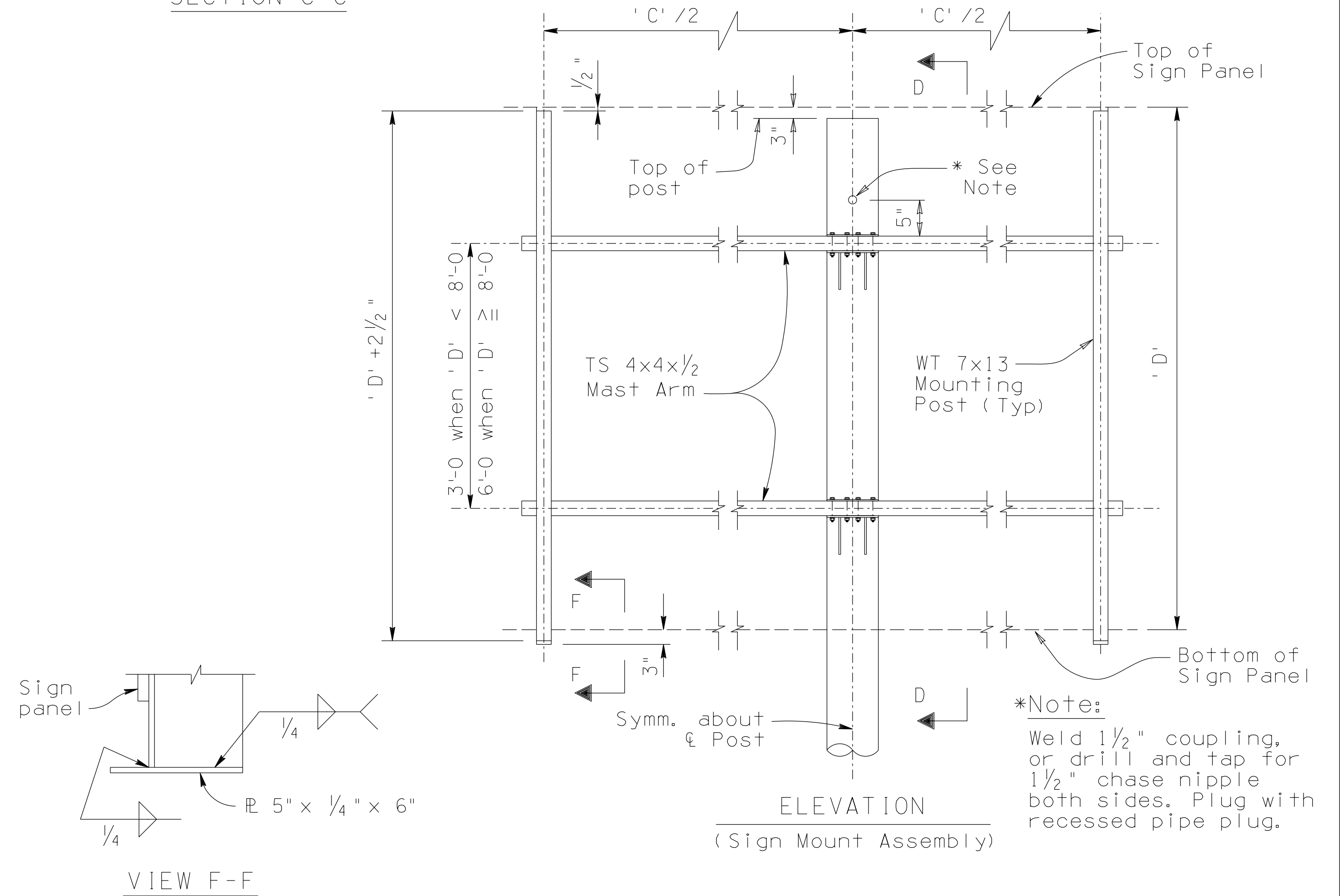
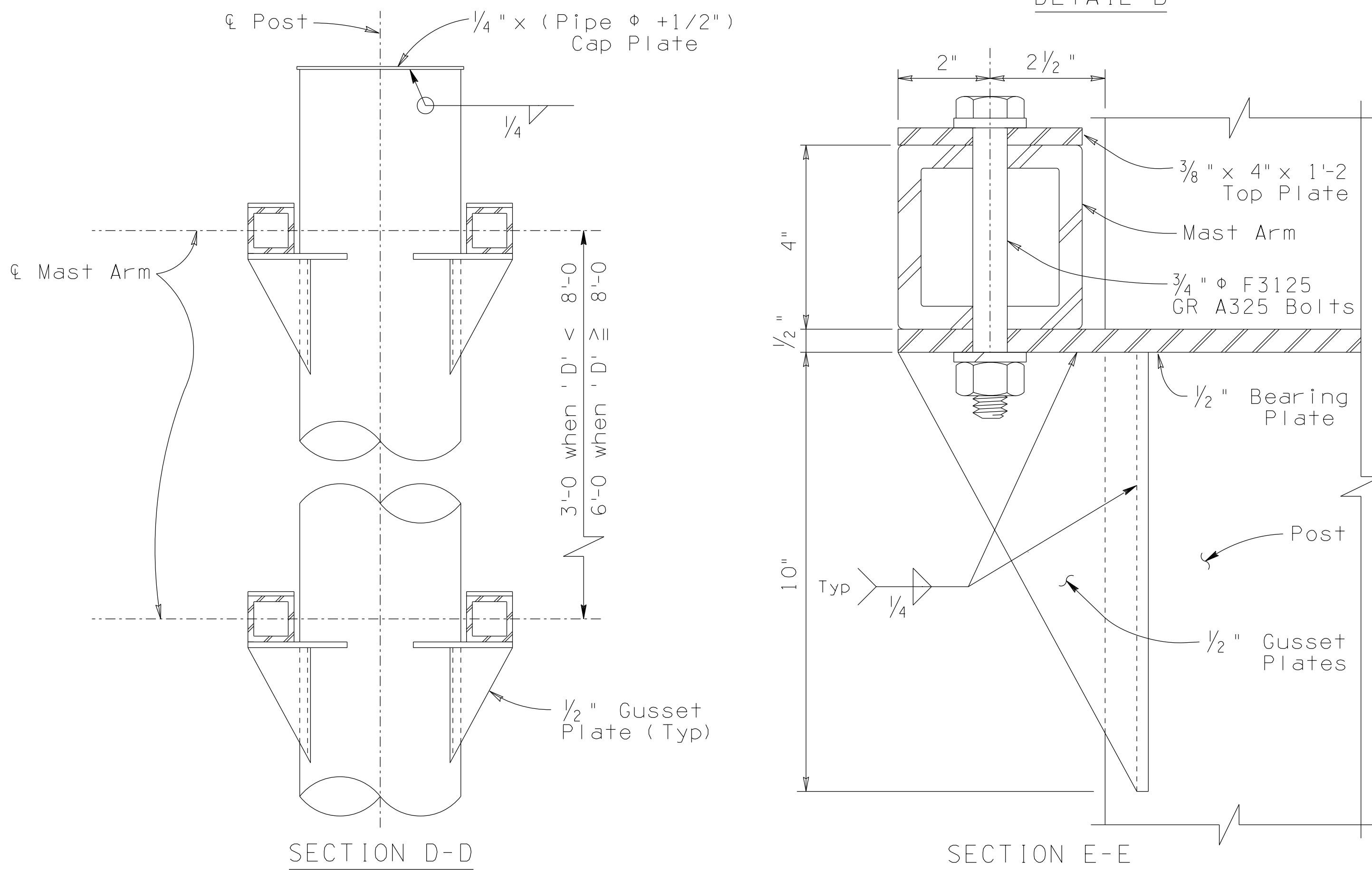
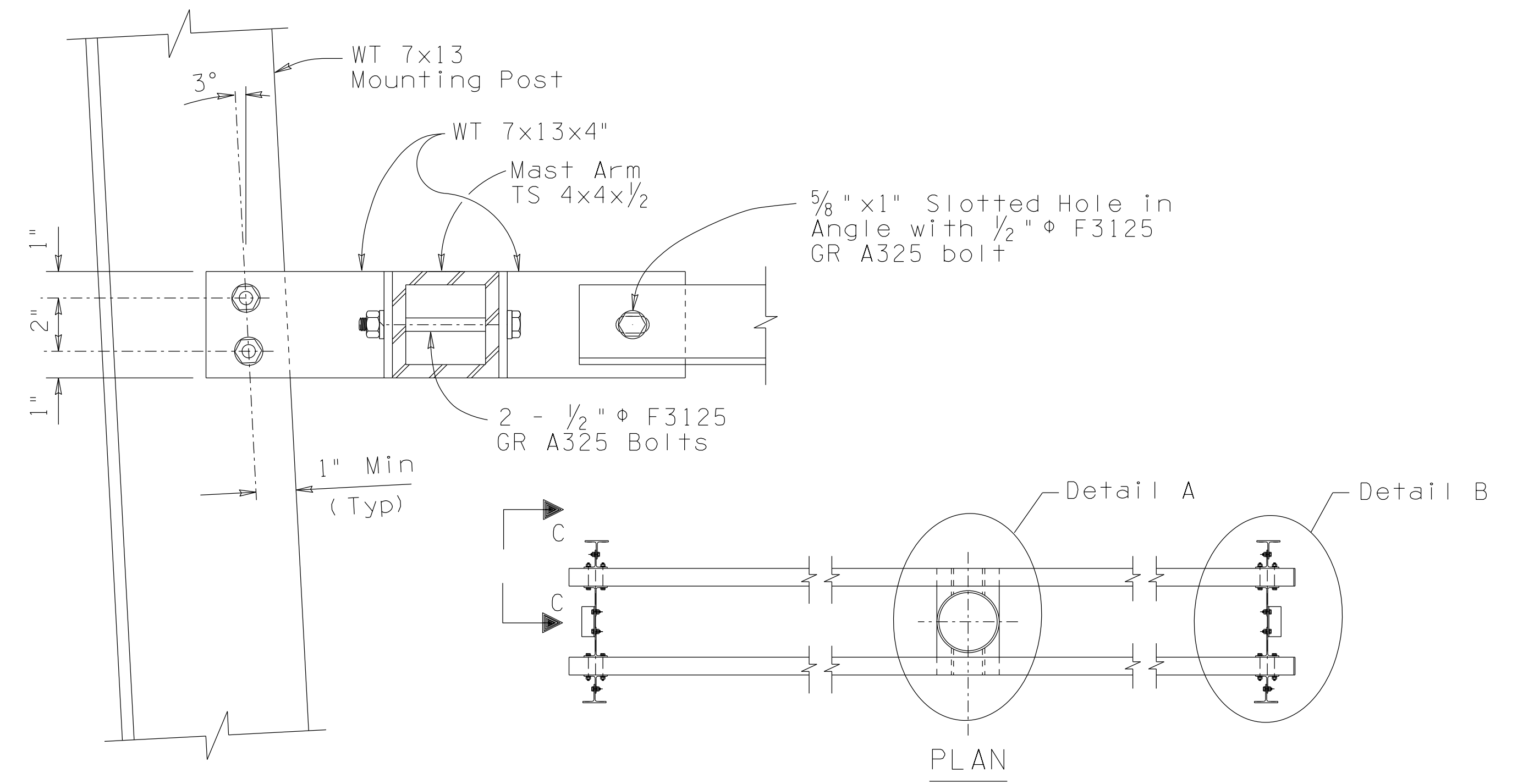
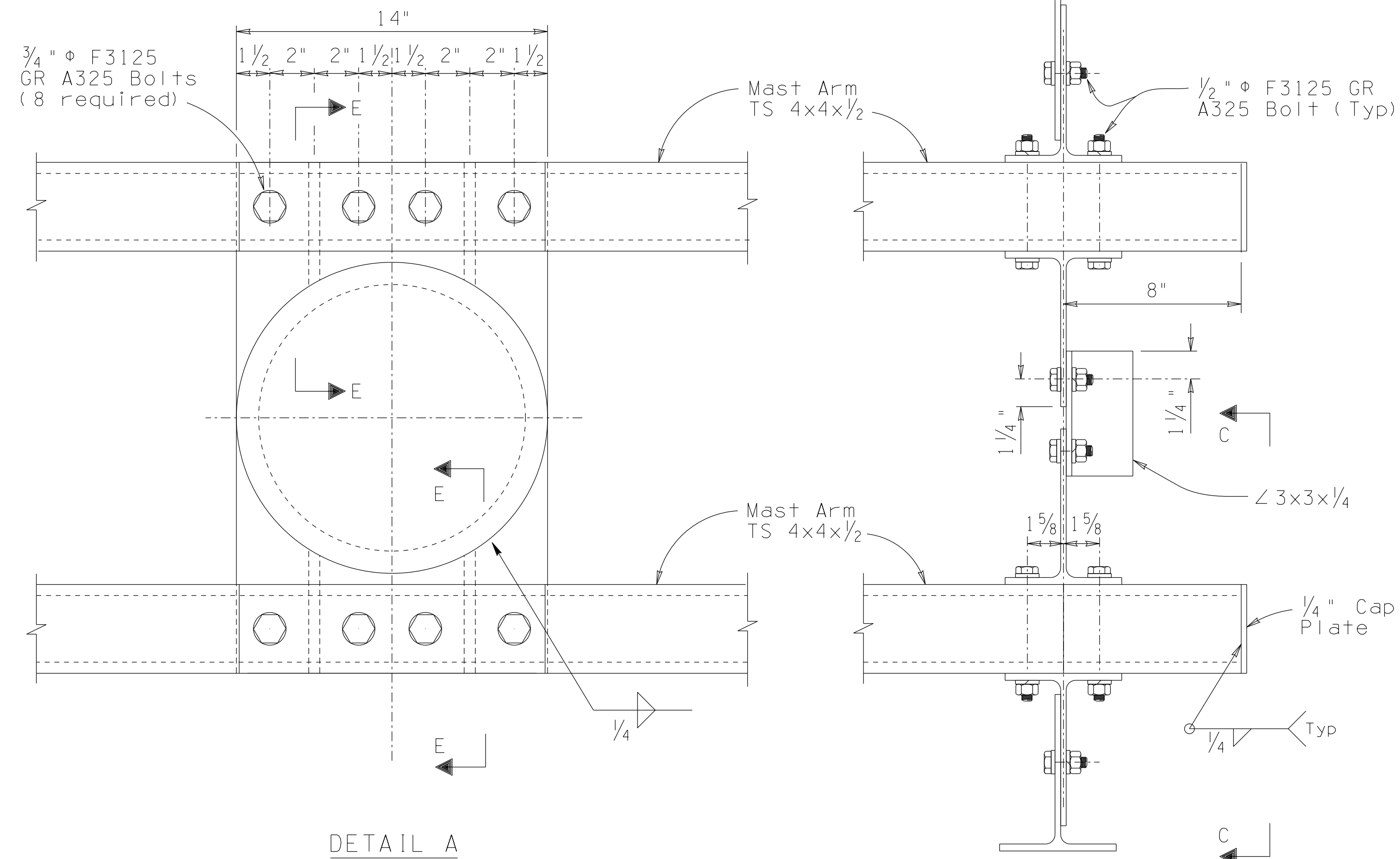


GUSSET PLATE DETAIL

Preheat per AWS requirements

STANDARDS ENGINEER A. ALZUBI	ARIZONA DEPARTMENT OF TRANSPORTATION INFRASTRUCTURE DELIVERY AND OPERATIONS DIVISION BRIDGE GROUP STANDARD DRAWING	DRAWING NO. SD 9.01 (2 of 5)
RECOMMENDED FOR APPROVAL GROUP MANAGER D. EBERHART		
APPROVED STANDARDS COMMITTEE APPROVED FOR DISTRIBUTION	MEDIAN SIGN STRUCTURE (TWO SIDED) FOUNDATION DETAILS	03/22 DATE

Note to Designer: The information presented in this Standard Drawing has been prepared in accordance with recognized engineering principles and is for general use. It should not be used for specific application without competent professional examination and verification of its suitability and applicability by a licensed professional engineer. Contents within the inner border line shall not be altered.

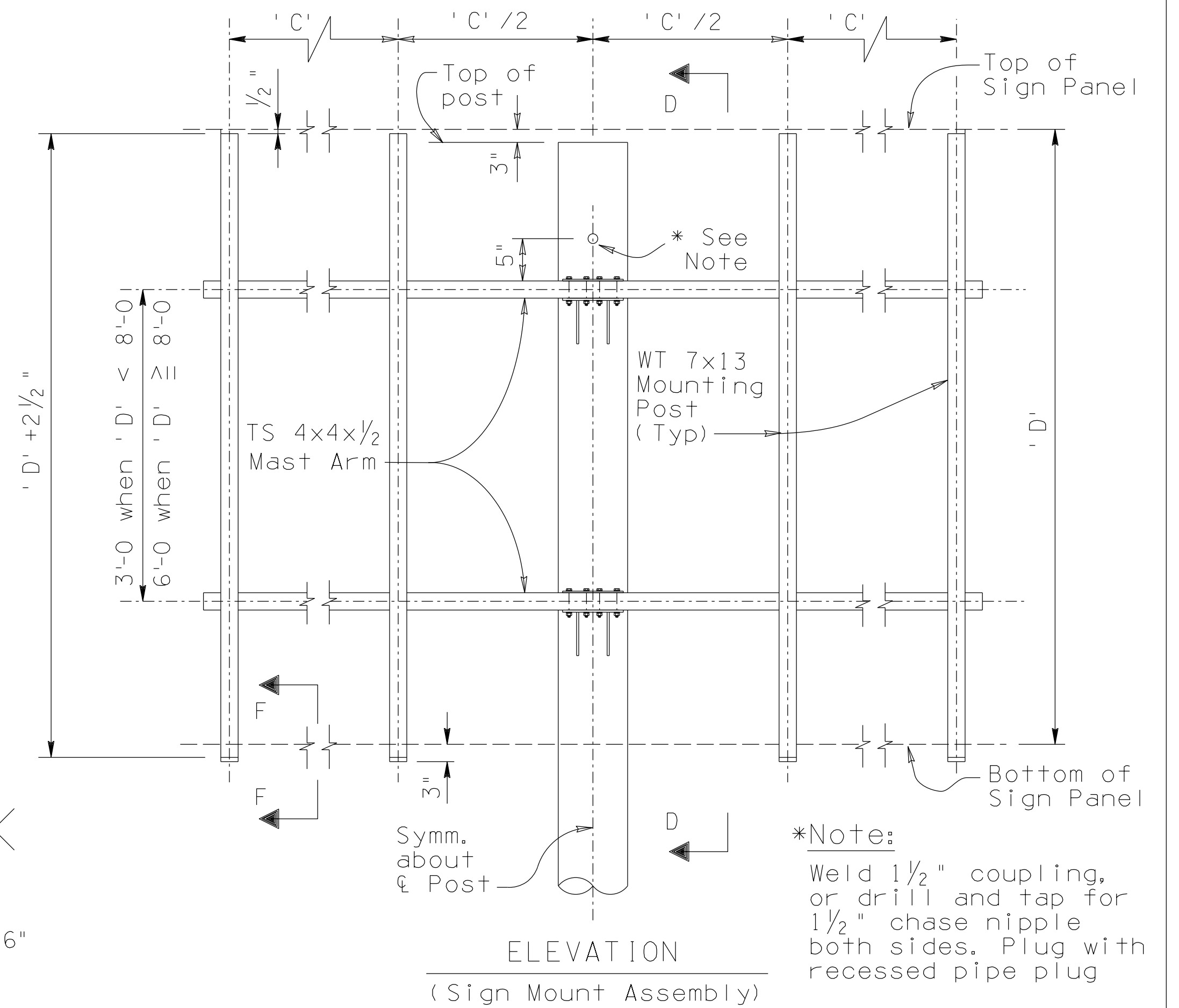
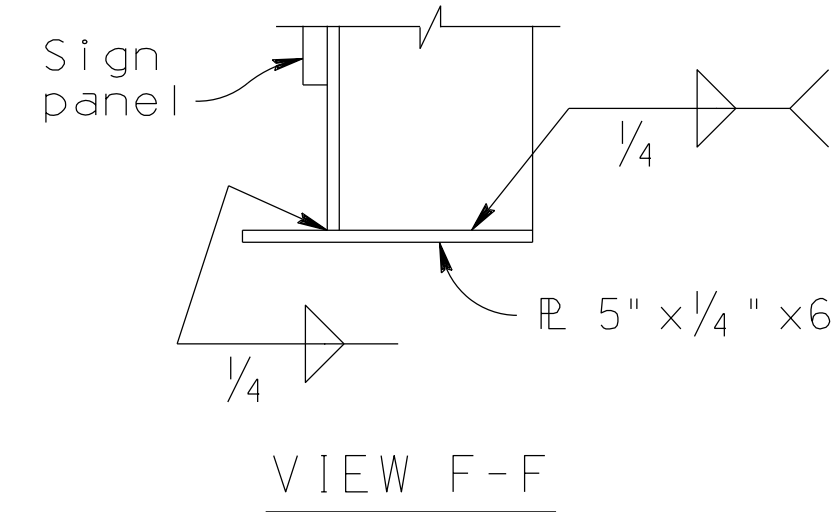
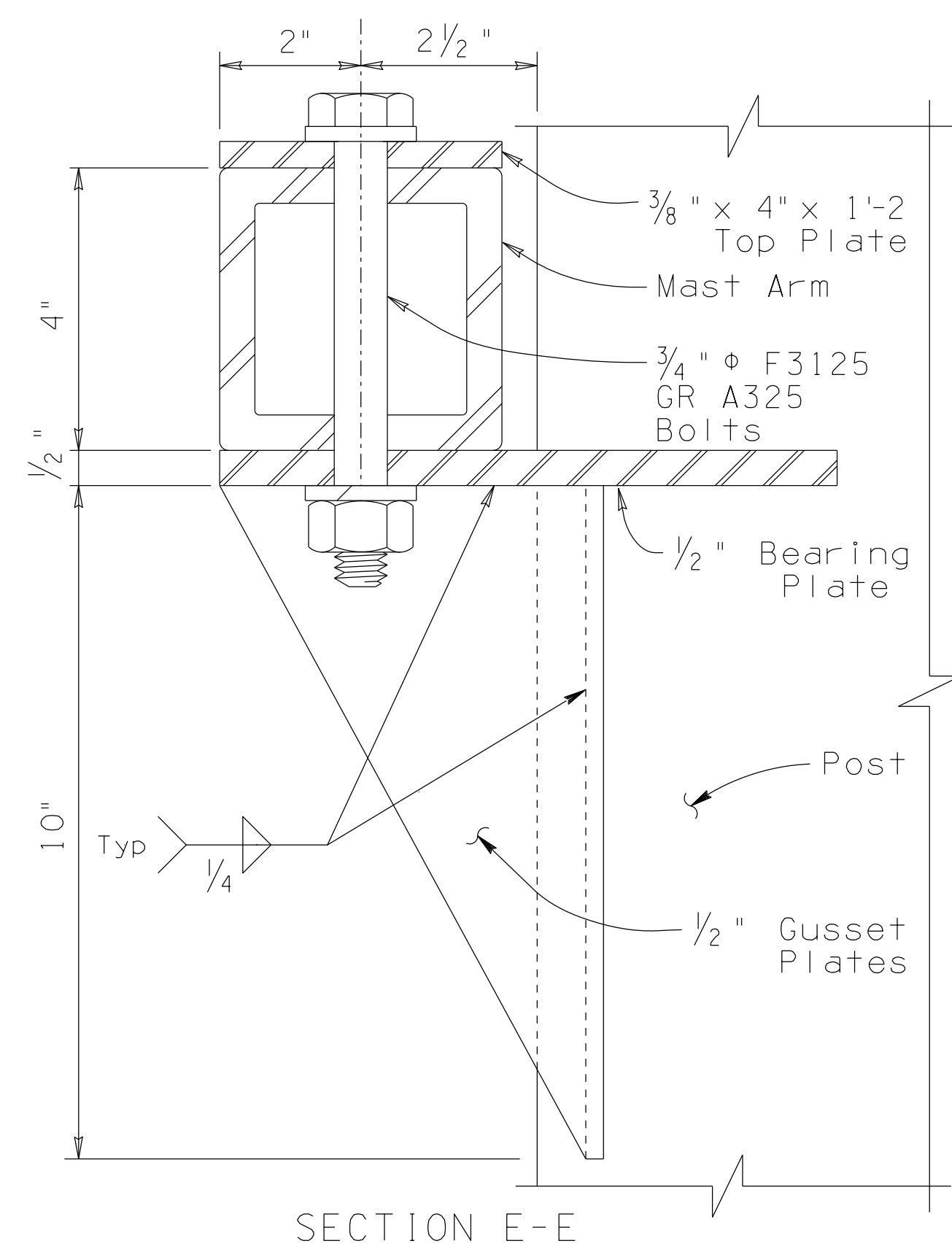
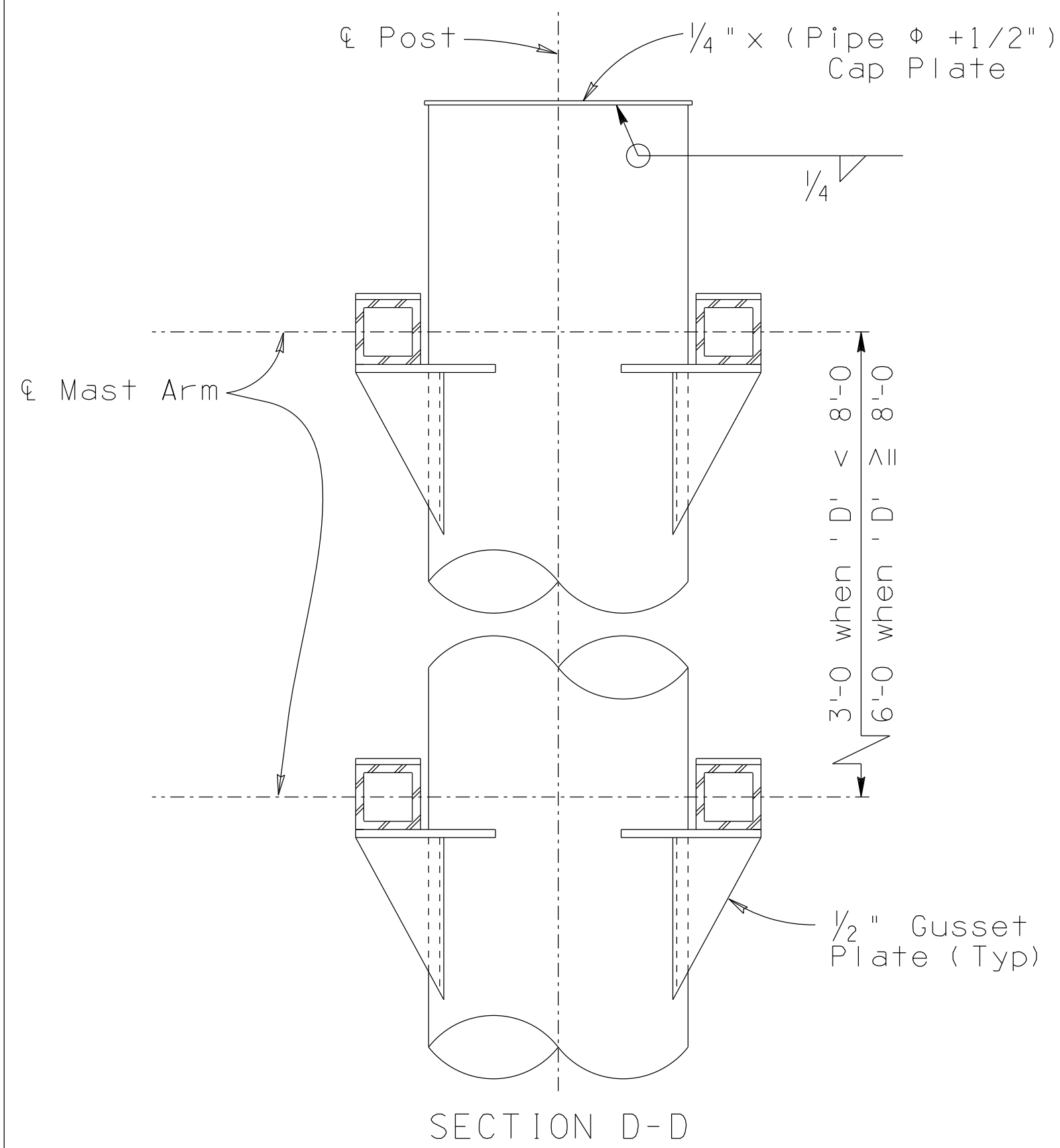
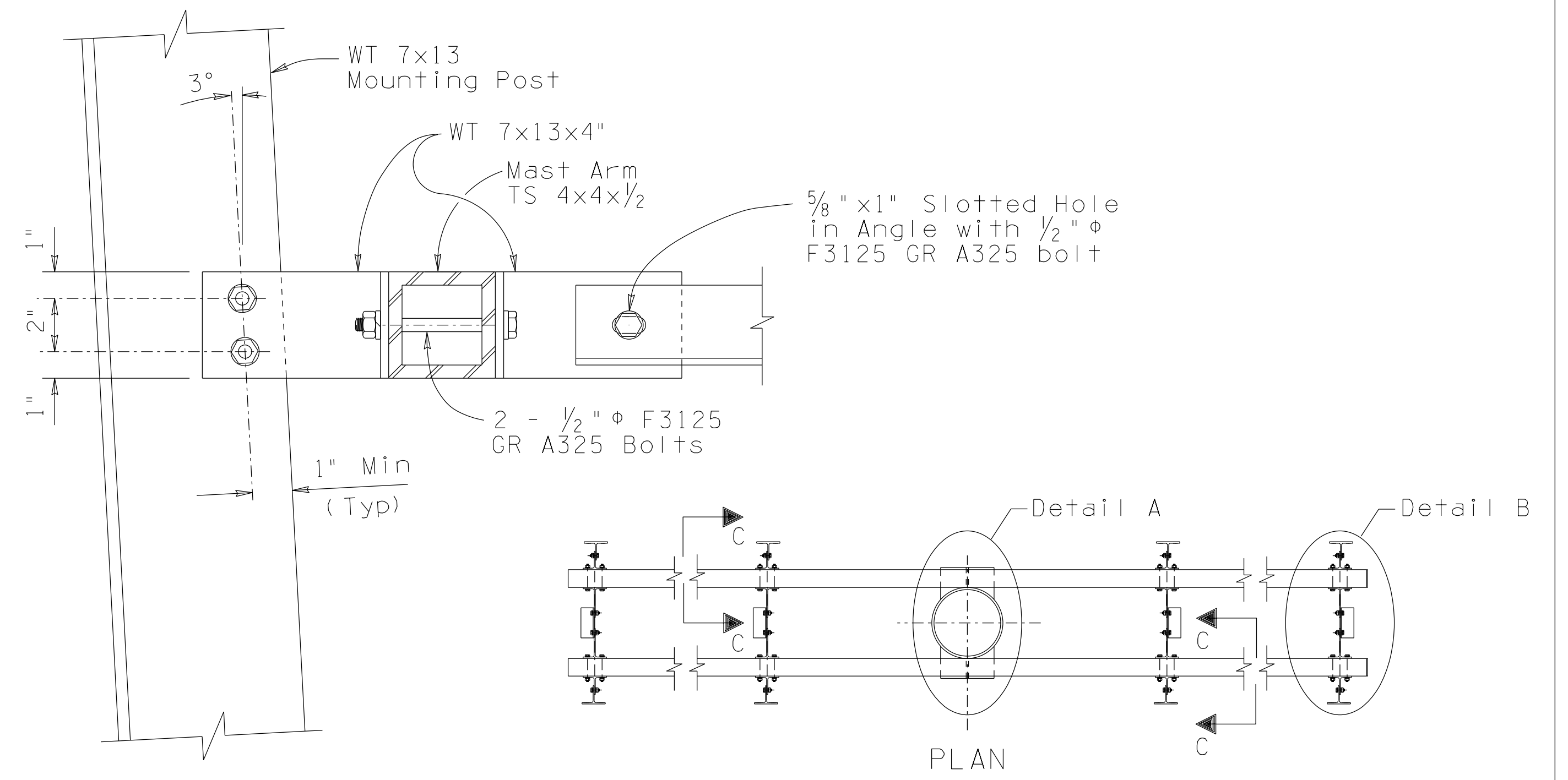
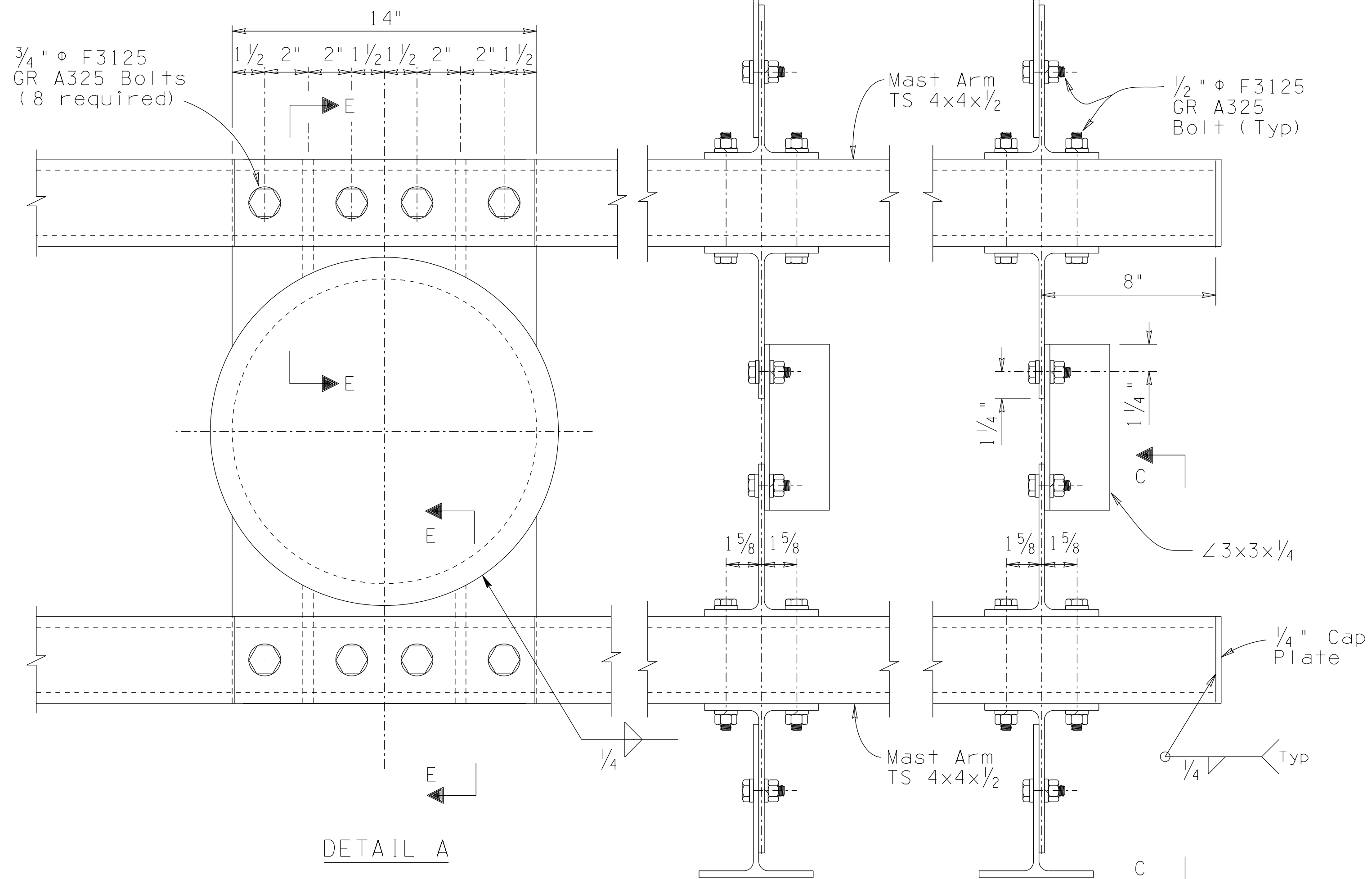


TYPE A FRAME

STANDARDS ENGINEER A. ALZUBI	ARIZONA DEPARTMENT OF TRANSPORTATION INFRASTRUCTURE DELIVERY AND OPERATIONS DIVISION BRIDGE GROUP STANDARD DRAWING
RECOMMENDED FOR APPROVAL GROUP MANAGER D. EBERHART	
APPROVED	MEDIAN SIGN STRUCTURE (TWO SIDED) TYPE A SIGN MOUNT ASSEMBLY
STANDARDS COMMITTEE APPROVED FOR DISTRIBUTION	DRAWING NO. SD 9.01 (3 of 5)

DATE: 04/19

Note to Designer: This Standard Drawing has been prepared in accordance with recognized engineering principles and is for general use. It should not be used for specific application without competent professional examination and verification of its suitability and applicability by a licensed professional engineer. Contents within the inner border line shall not be altered.

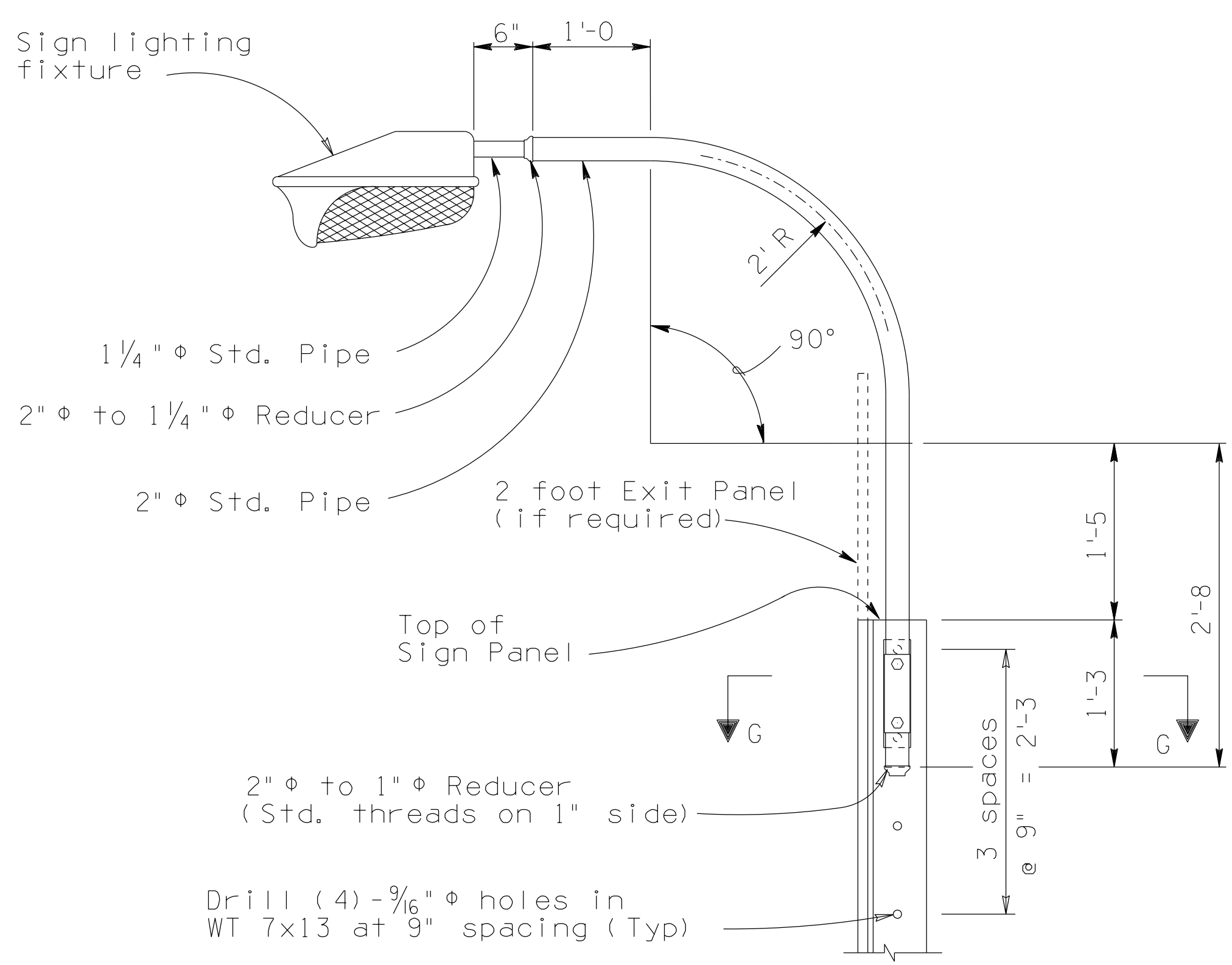


TYPE B FRAME

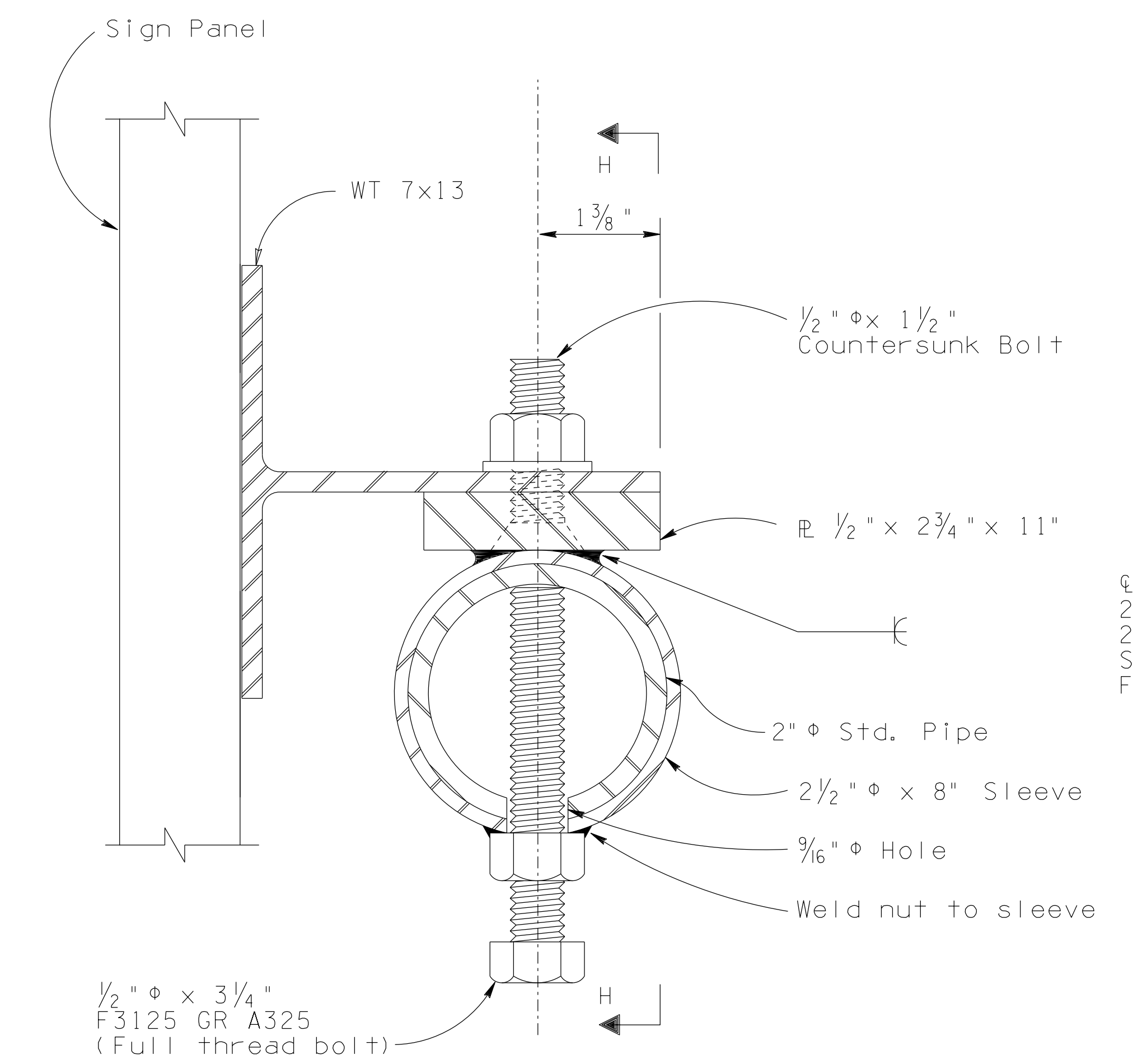
STANDARDS ENGINEER A. ALZUBI	ARIZONA DEPARTMENT OF TRANSPORTATION INFRASTRUCTURE DELIVERY AND OPERATIONS DIVISION BRIDGE GROUP STANDARD DRAWING
RECOMMENDED FOR APPROVAL GROUP MANAGER D. EBERHART	
APPROVED	MEDIAN SIGN STRUCTURE (TWO SIDED) TYPE B SIGN MOUNT ASSEMBLY
STANDARDS COMMITTEE APPROVED FOR DISTRIBUTION	DRAWING NO. SD 9.01 (4 of 5)

DATE 04/19

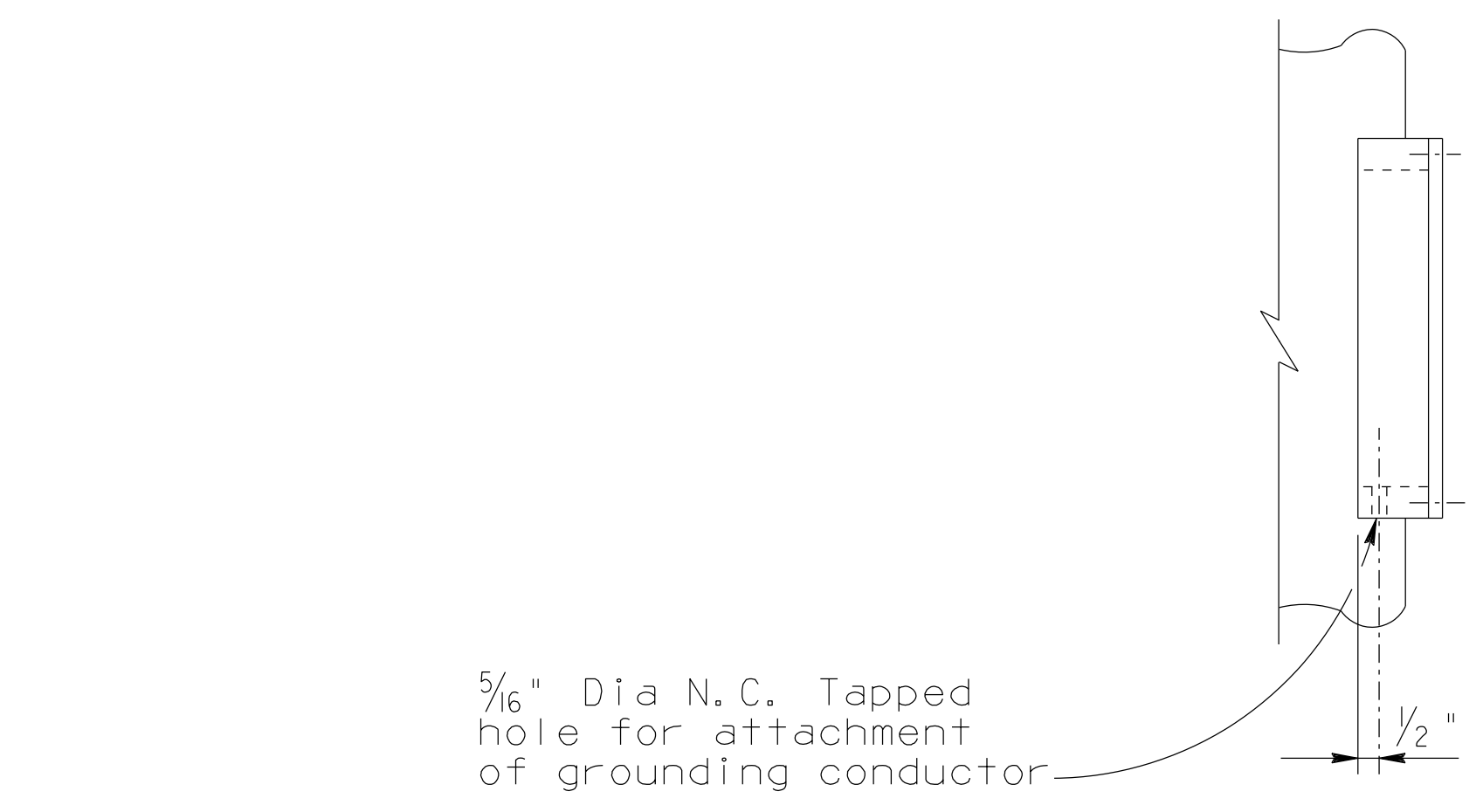
Note to Designer:
 The information presented in this Standard Drawing has been prepared in accordance with recognized engineering principles and is for general use. It should not be used for specific application without competent professional examination and verification of its suitability and applicability by a licensed professional engineer. Contents within the inner border line shall not be altered.



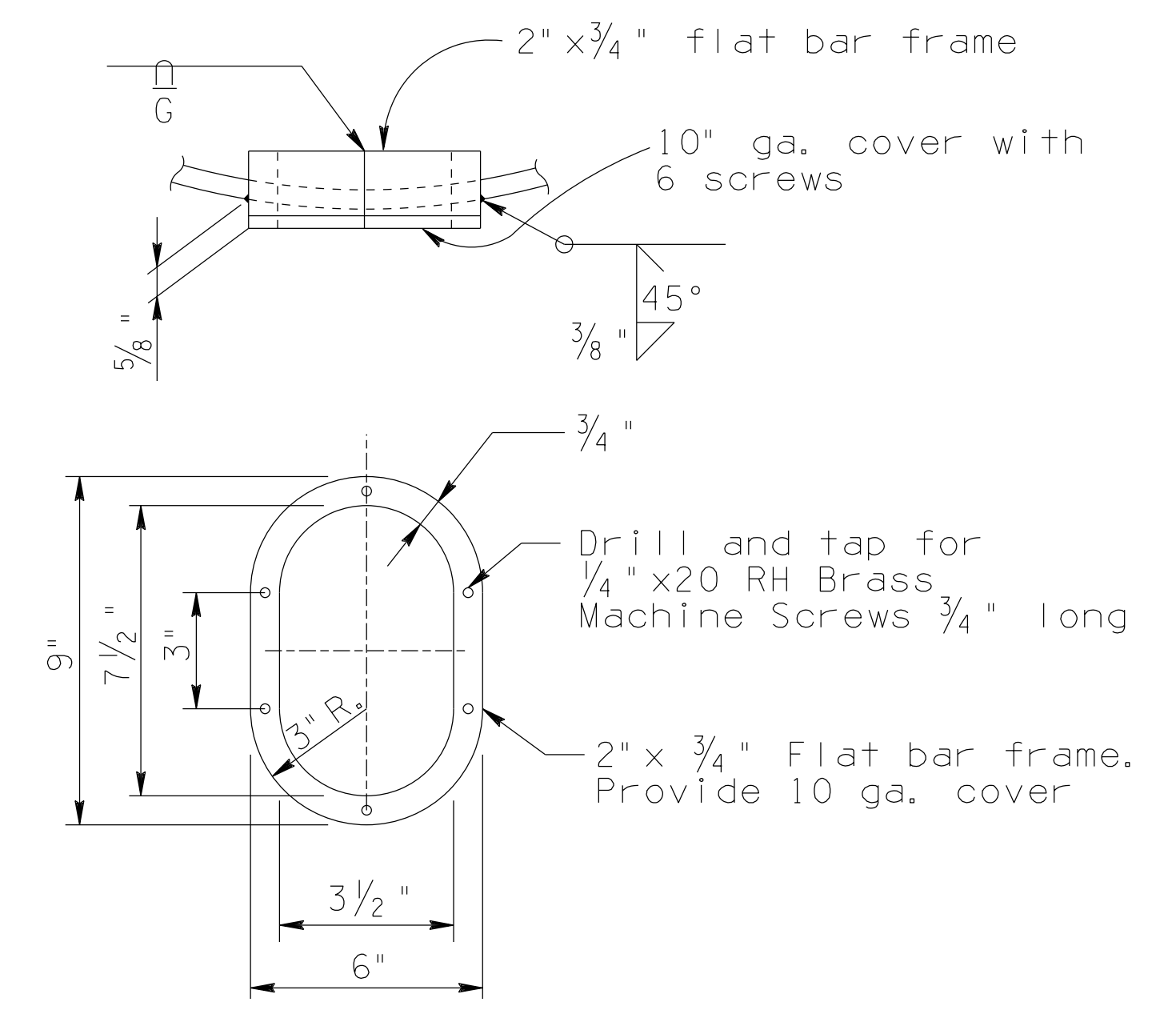
OVERHEAD LIGHT SUPPORT DETAIL



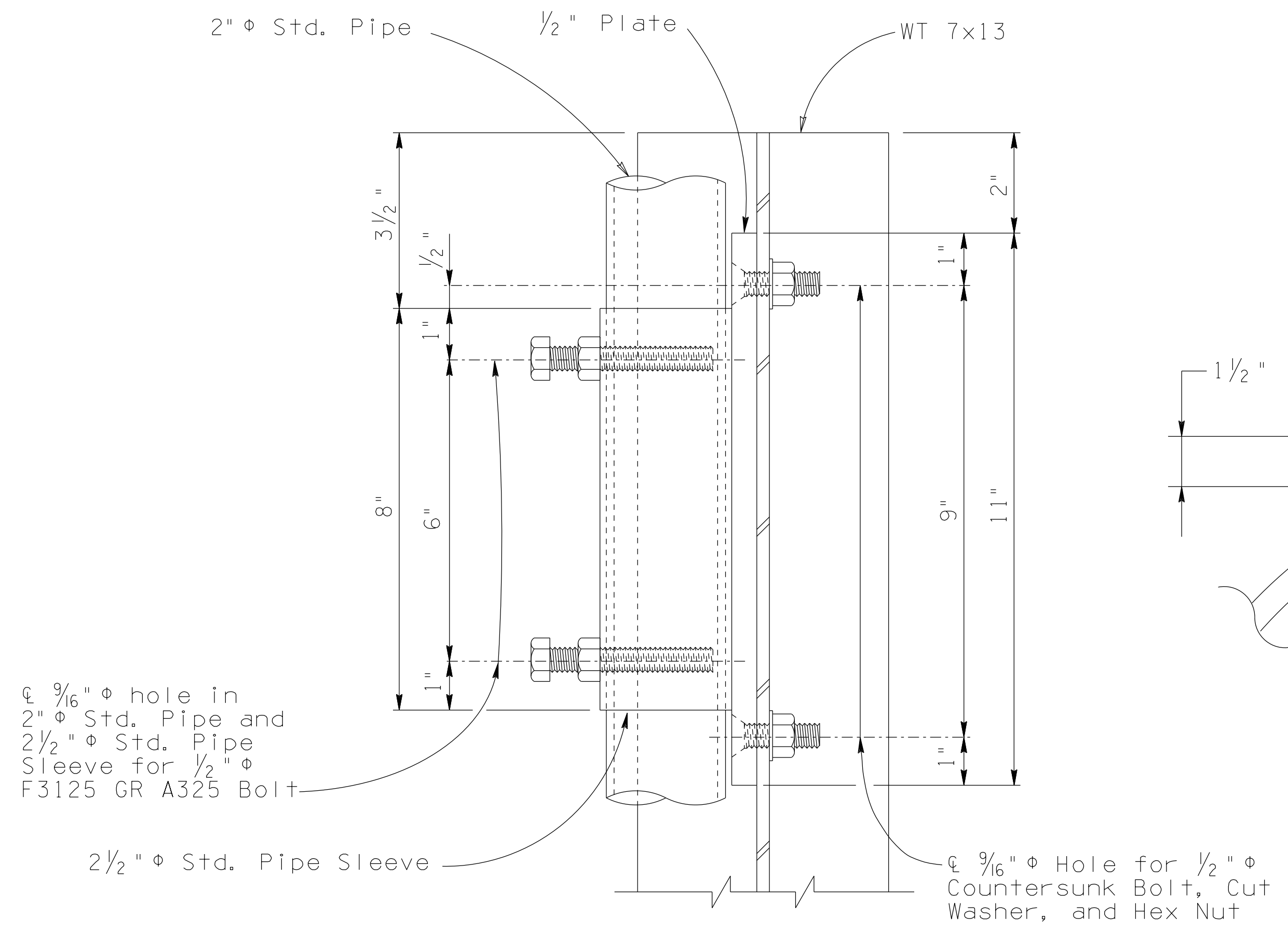
SECTION G-G



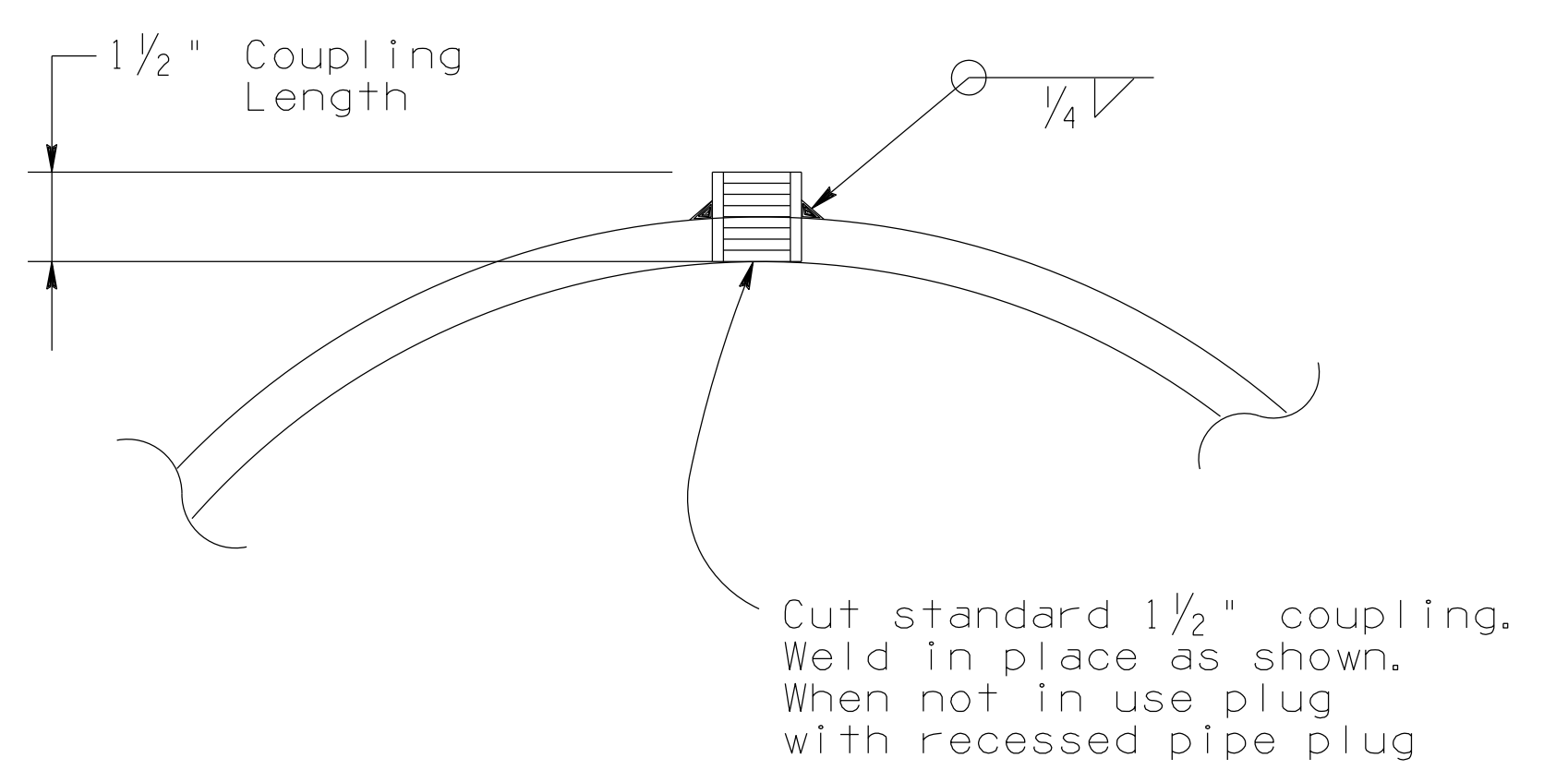
ELEVATION H-H



HAND HOLE & COVER DETAILS



COUPLING DETAIL



STANDARDS ENGINEER A. ALZUBI	ARIZONA DEPARTMENT OF TRANSPORTATION INFRASTRUCTURE DELIVERY AND OPERATIONS DIVISION BRIDGE GROUP STANDARD DRAWING	
RECOMMENDED FOR APPROVAL GROUP MANAGER D. EBERHART	MEDIAN SIGN STRUCTURE (TWO SIDED) LIGHT SUPPORT DETAILS	DRAWING NO. SD 9.01 (5 of 5)
APPROVED	STANDARDS COMMITTEE APPROVED FOR DISTRIBUTION	DATE 04/19