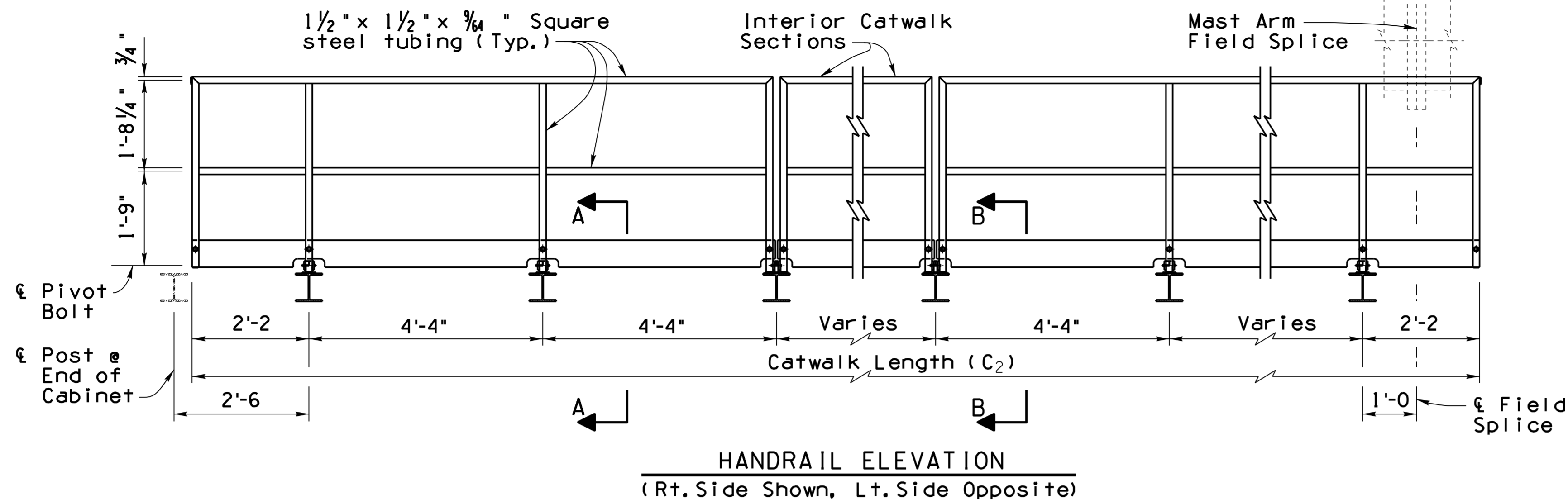


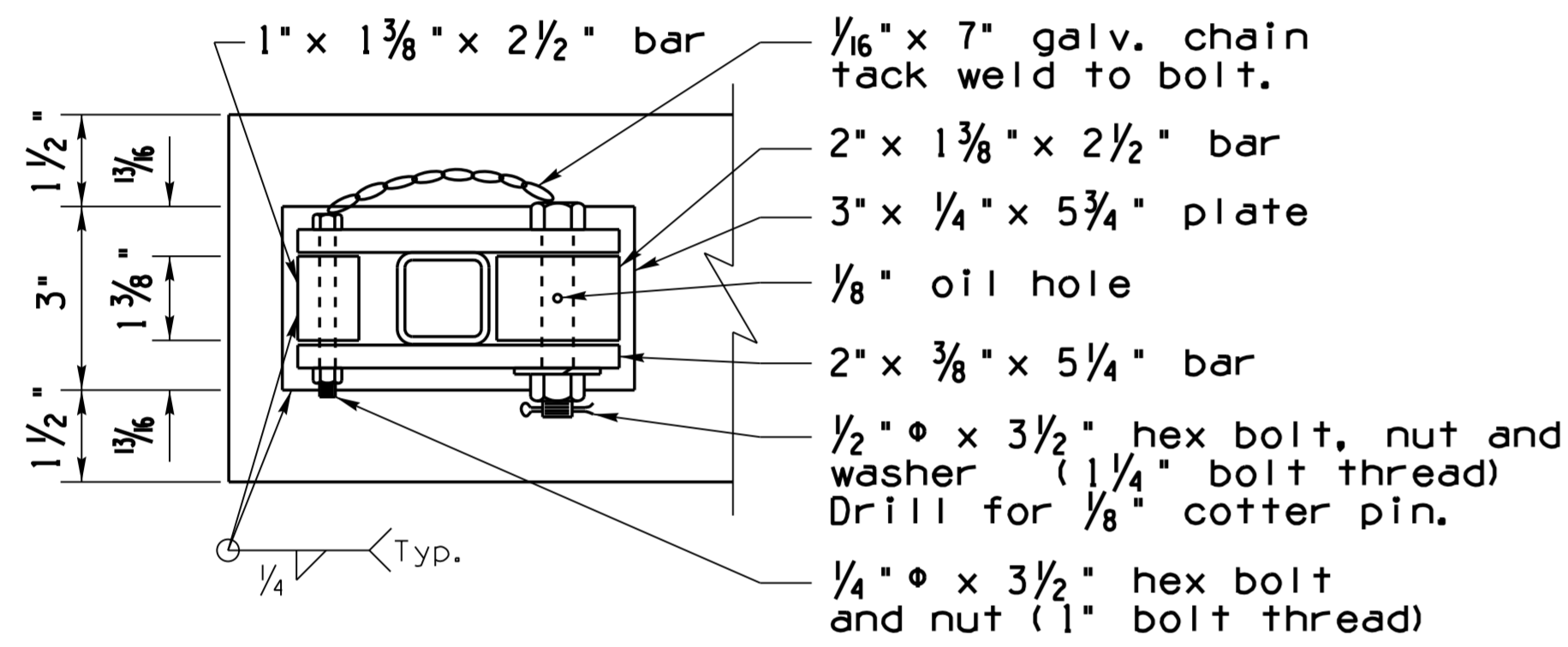
Note to Designer:
 The information presented in this Standard Detail has been prepared in accordance with recognized engineering principles and is for general use. It should not be used for specific application without competent professional examination and verification of its suitability and applicability by a licensed professional engineer. Contents within the inner border line shall not be altered.

NO.	DESCRIPTION OF REVISIONS	DATE	MADE BY
1	Original Issue	1-15	D.B.B.
2			
3			
4			

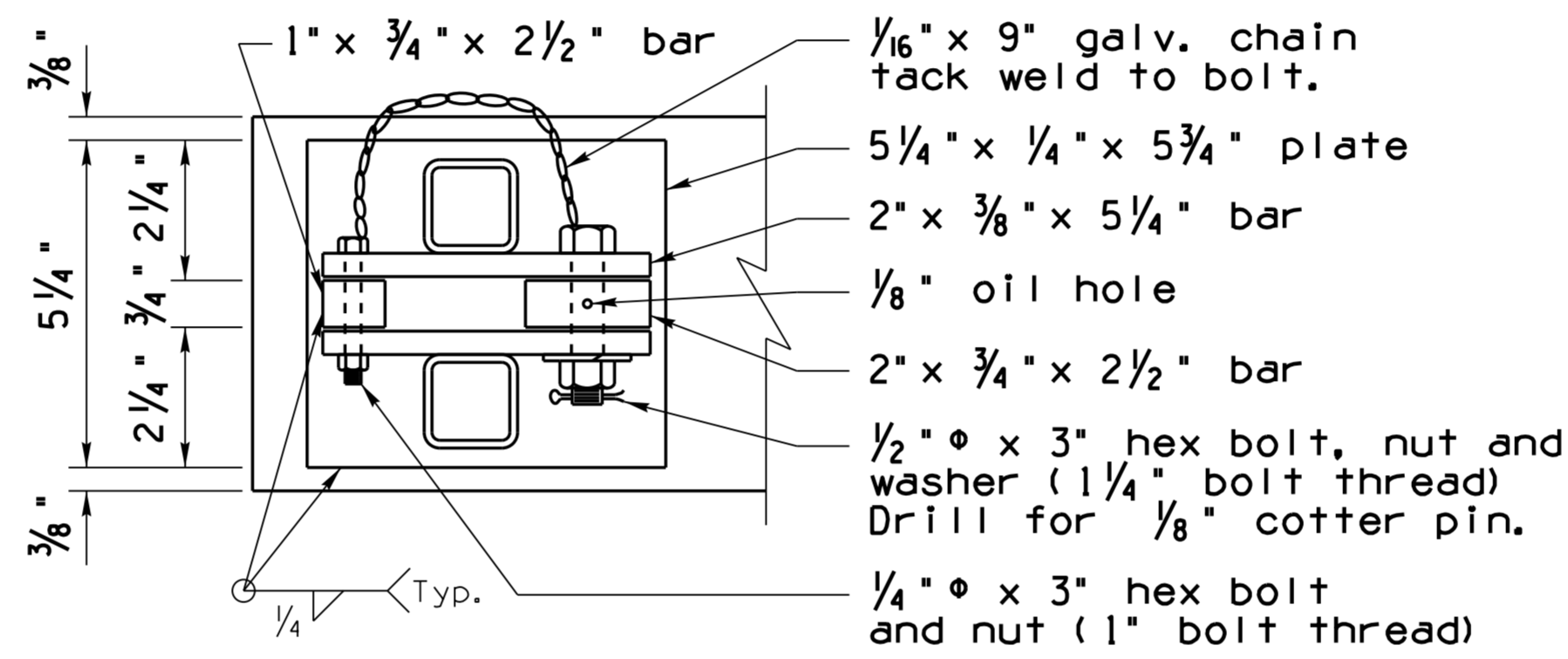


LED DMS TUBULAR FRAME CAMBER (INCHES)								
Frame Type	2F	2F	3F	3F	3F	4F	4F	4F
Span	56'-0	70'-0	82'-0	94'-0	106'-0	118'-0	130'-0	142'-0
"X"	1"	1 1/2"	1 3/4"	2 1/2"	3 1/2"	4"	6"	7 3/4"
"Y"	1 1/4"	2"	2 1/4"	3 1/2"	4 3/4"	6"	8 1/4"	11 1/4"

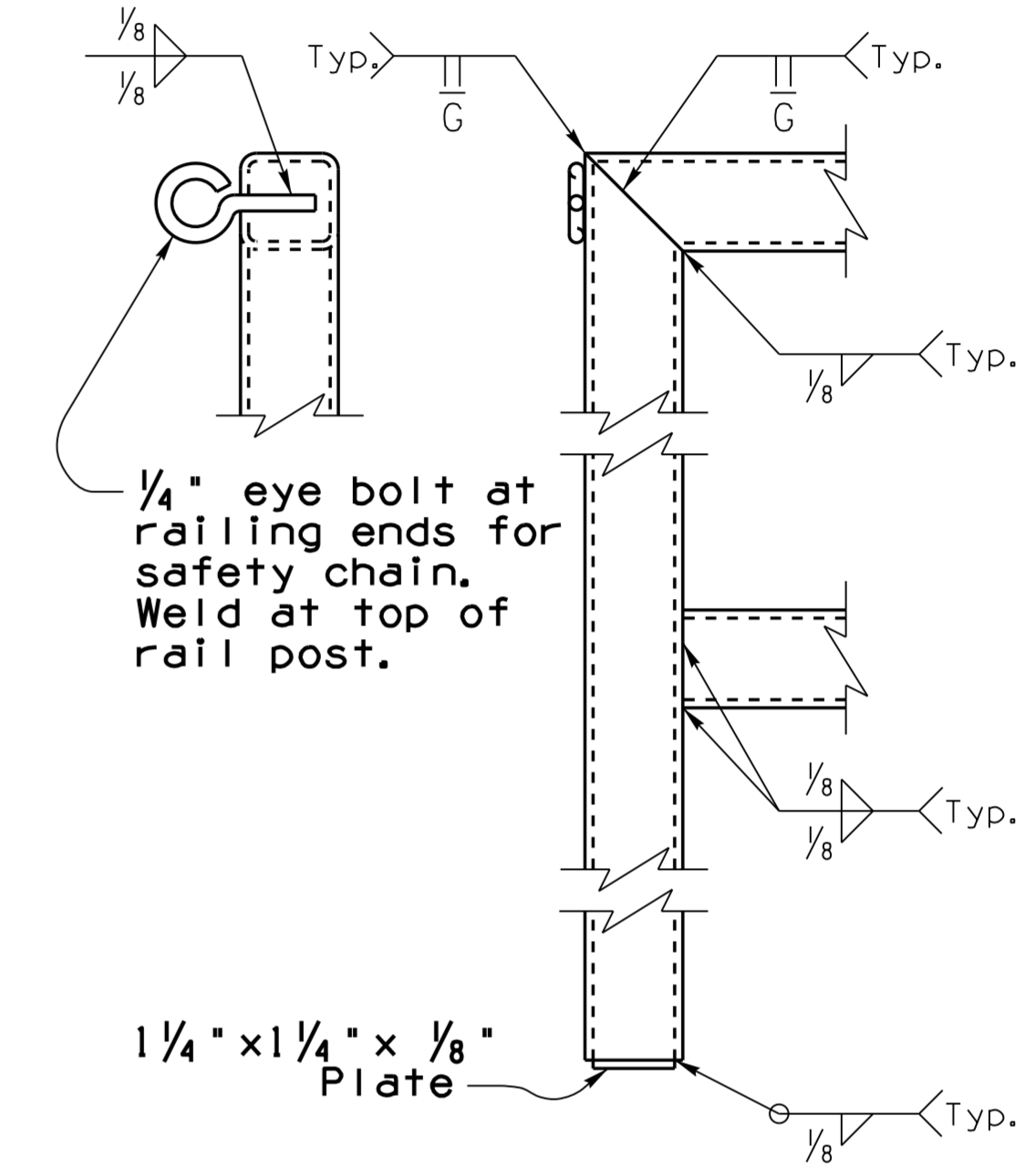
Calculated camber provides for deflections due to dead load of tubular structure and dead loads of sign cabinet, catwalks and attachments. For spans other than shown, interpolate for "X" and "Y" dimensions. See SD 9.20 (3 of 5) for CAMBER DIAGRAM and camber notes.



SECTION C-C
(Single Post)



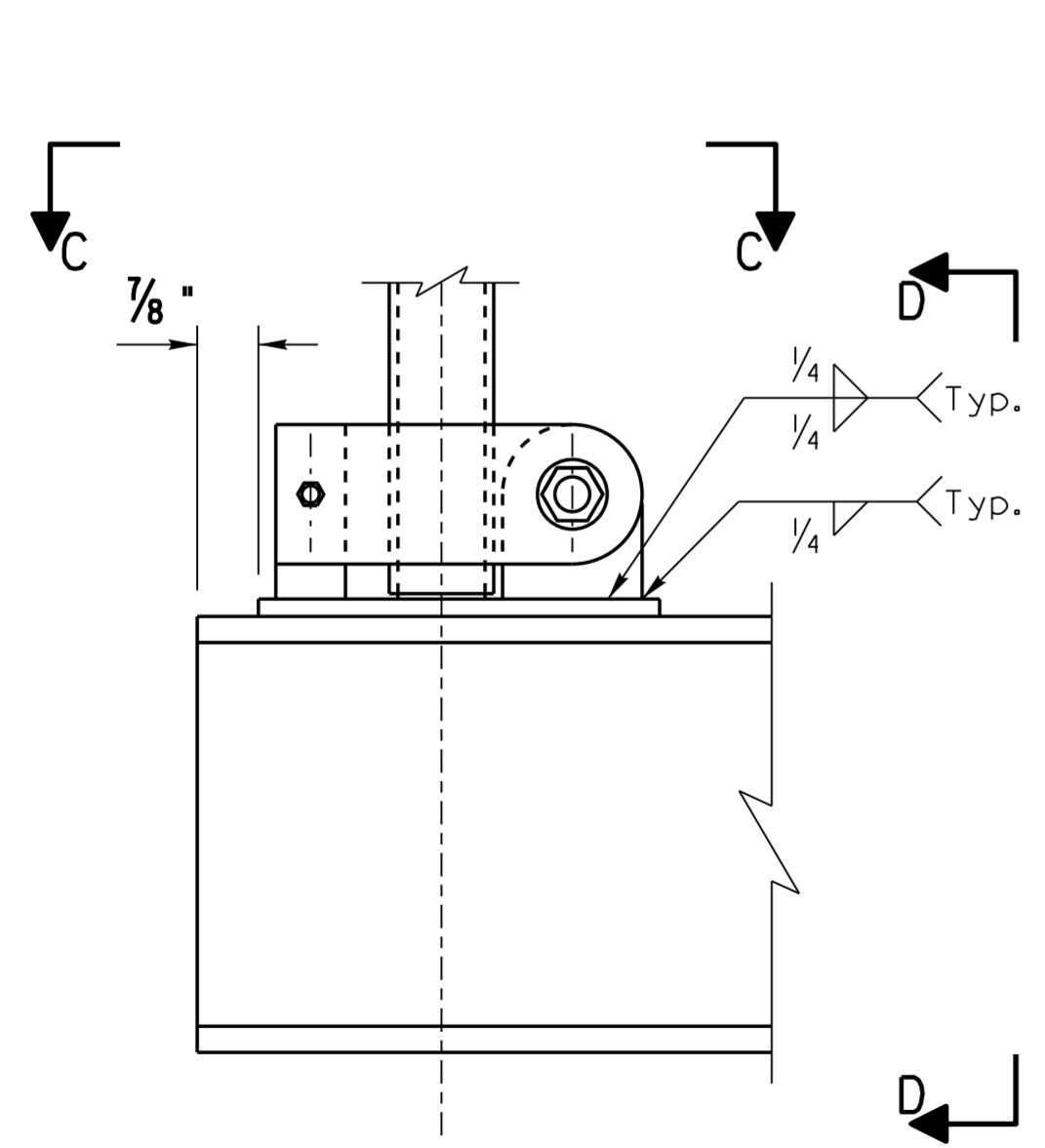
SECTION E-E
(Dual Post)



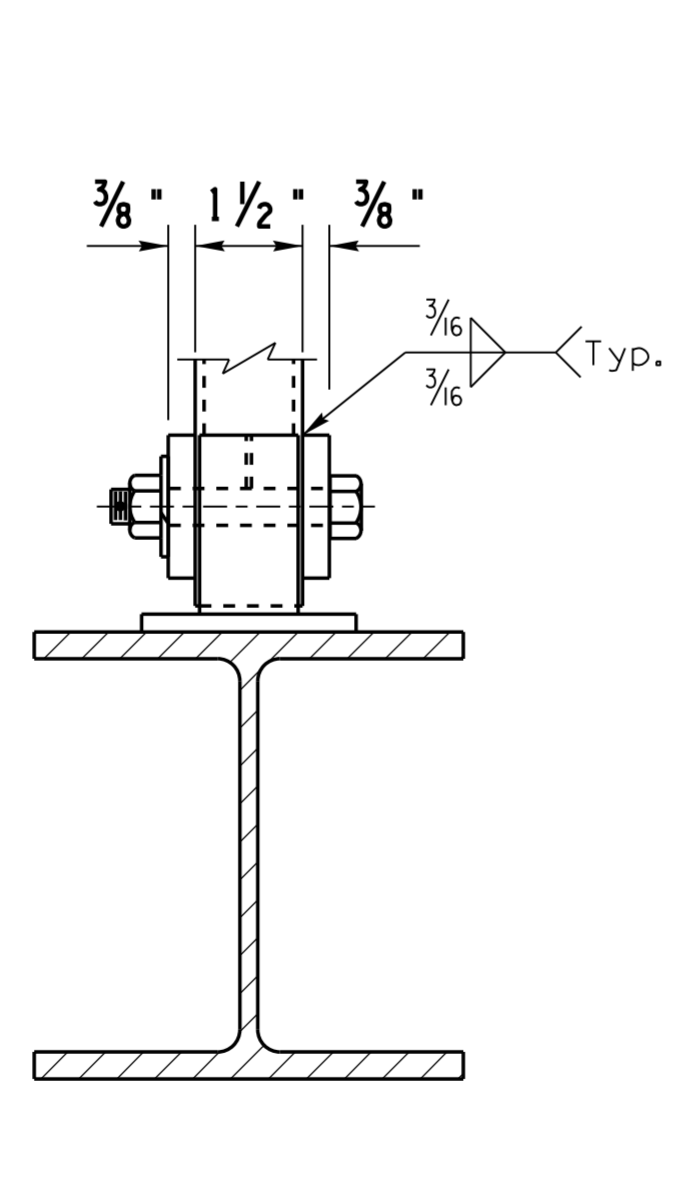
HANDRAIL WELD DETAILS

NOTES:

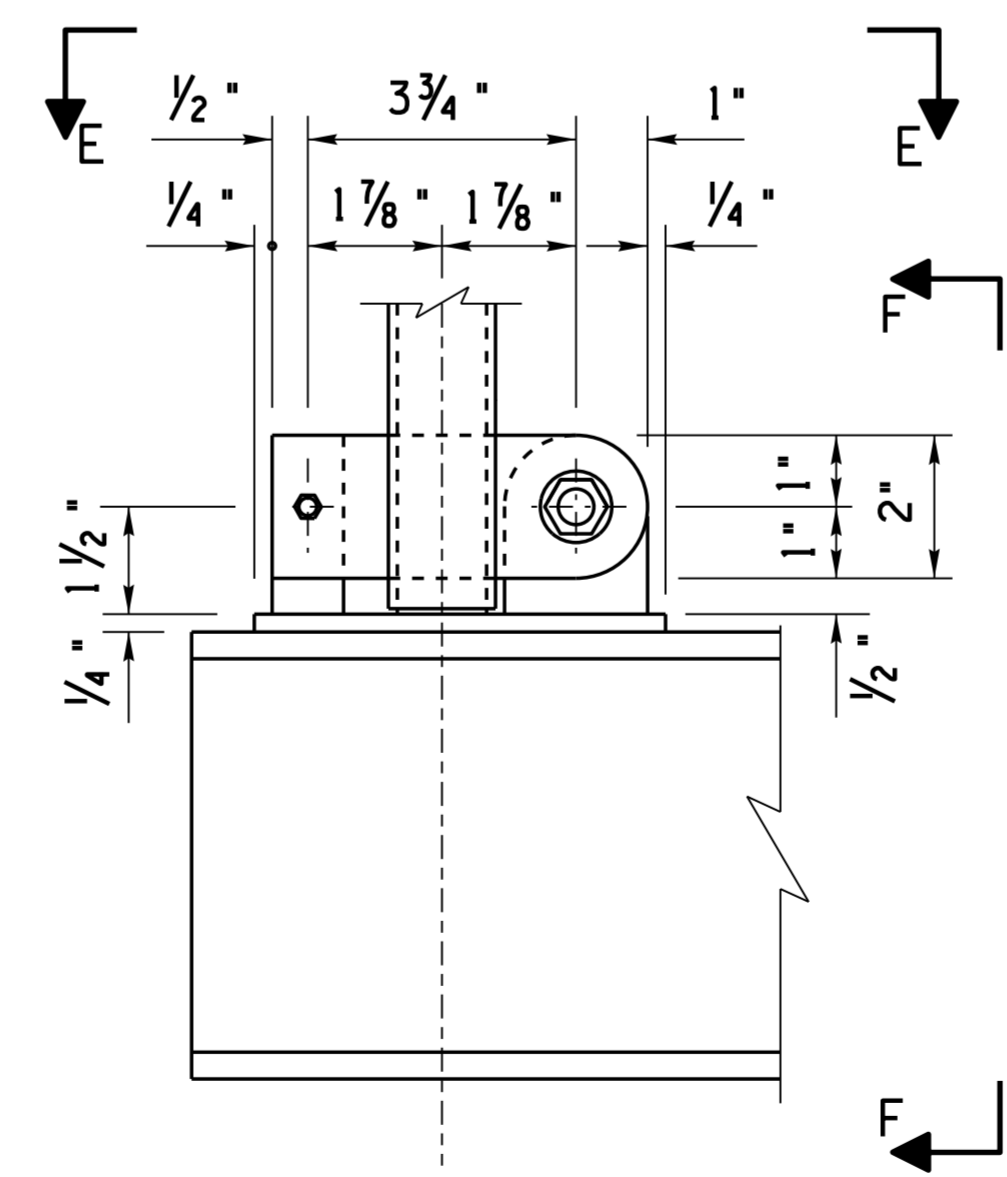
- Handrails shall extend from end of sign cabinet to mast arm field splice as shown for both catwalks. Maximum support post spacing shall be 4'-4". Minimum support post spacing shall be 2'-2". Maximum three spaces per rail section. Minimum two support posts per rail section. Minimum catwalk length = 6'-6".
- Handrail to be 1 1/2" x 1 1/2" x 3/4" square steel tubing weighing 2.70 plf.
- Provide eye bolts at ends of top handrails for 3/16" galvanized safety chain with (1) 1/4" snap hook per catwalk end.
- Provide 5/8" holes for 1/2" pivot bolts and 3/8" holes for 1/4" lock bolts.
- See SD 9.53 (5 of 5) for inside handrails, grating and toeboard details.



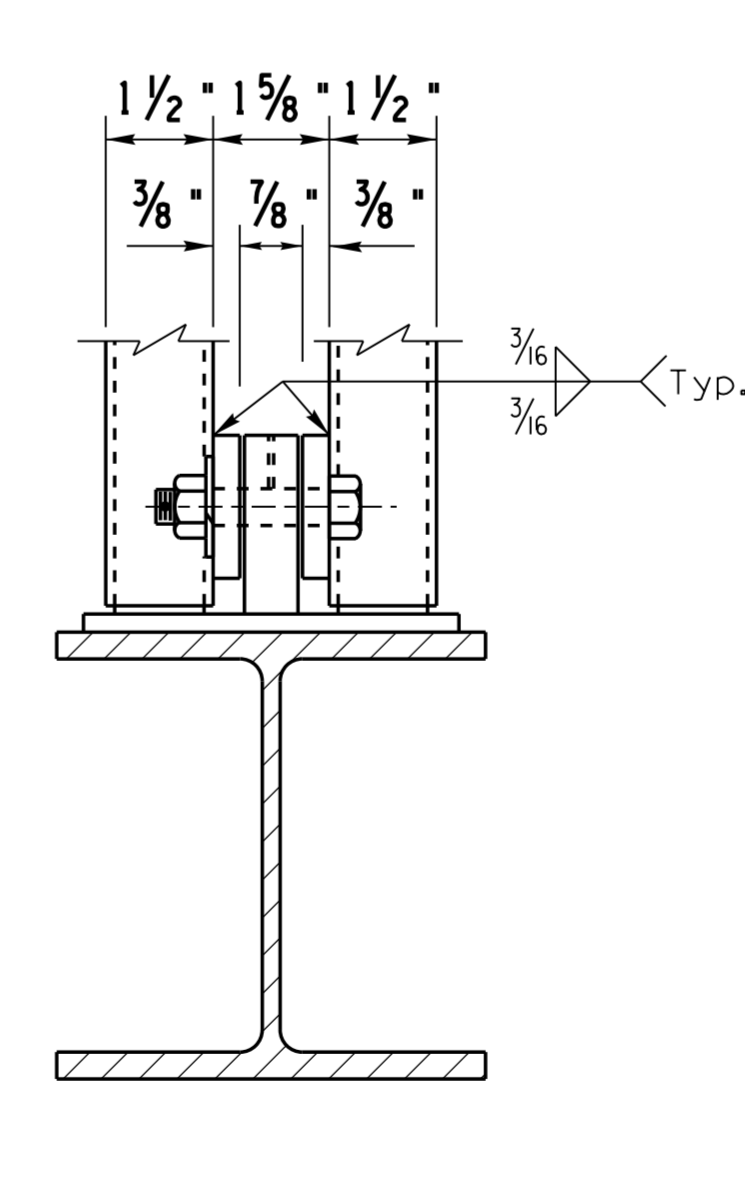
SECTION A-A
(Single Post)



SECTION D-D
(Single Post)



SECTION B-B
(Dual Post)



SECTION F-F
(Dual Post)

DESIGN APPROVED <i>Celina Aman</i>		ARIZONA DEPARTMENT OF TRANSPORTATION INFRASTRUCTURE DELIVERY AND OPERATIONS DIVISION BRIDGE GROUP STRUCTURE DETAIL	
APPROVED FOR DISTRIBUTION <i>[Signature]</i>		DMS (VARIABLE TILT CABINET) CATWALK HANDRAIL DETAILS	
ROUTE	PROJECT NO.	FA NO.	DRAWING NO. SD 9.53 (4 of 5)
LOCATION			SHEET NO. OF