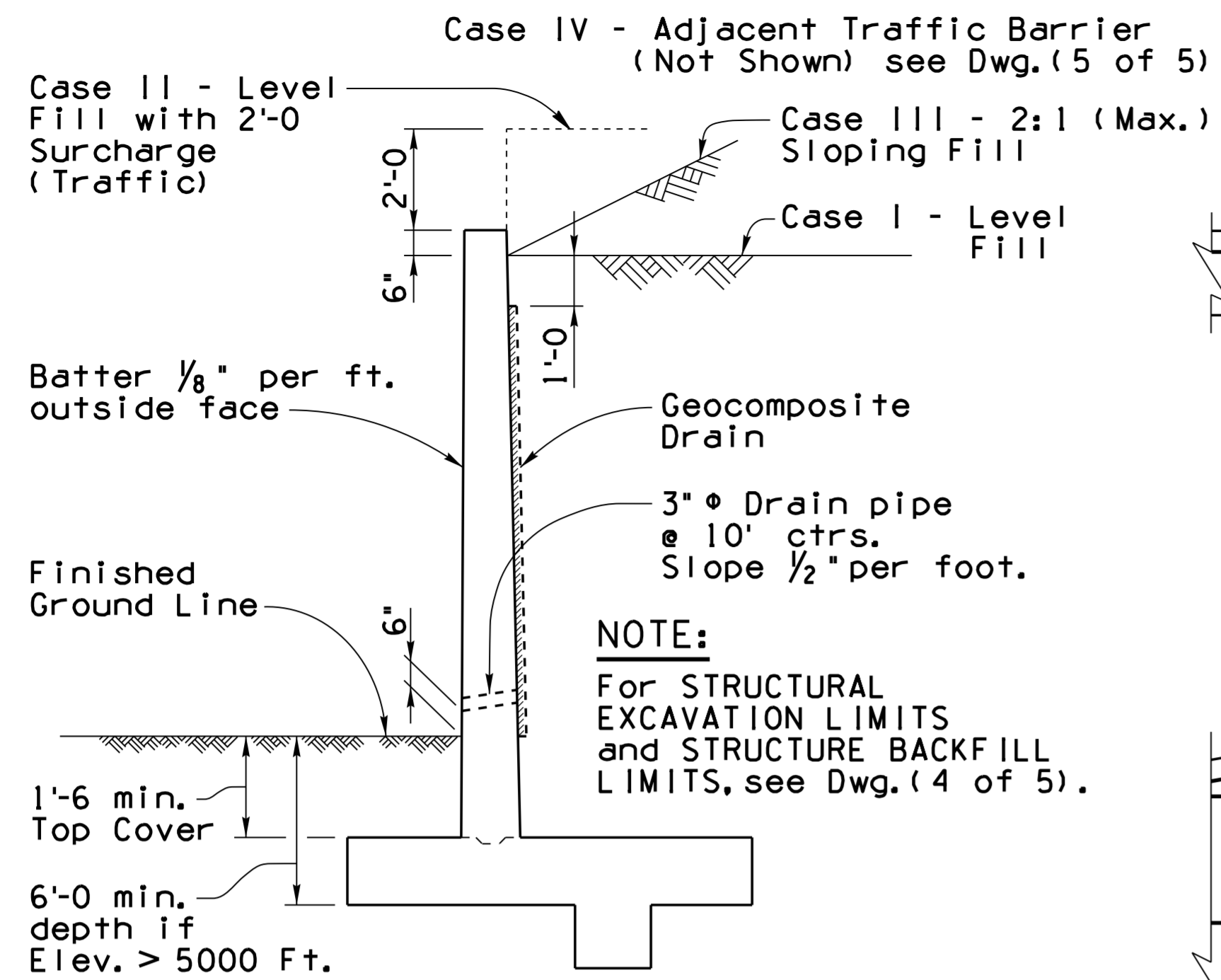
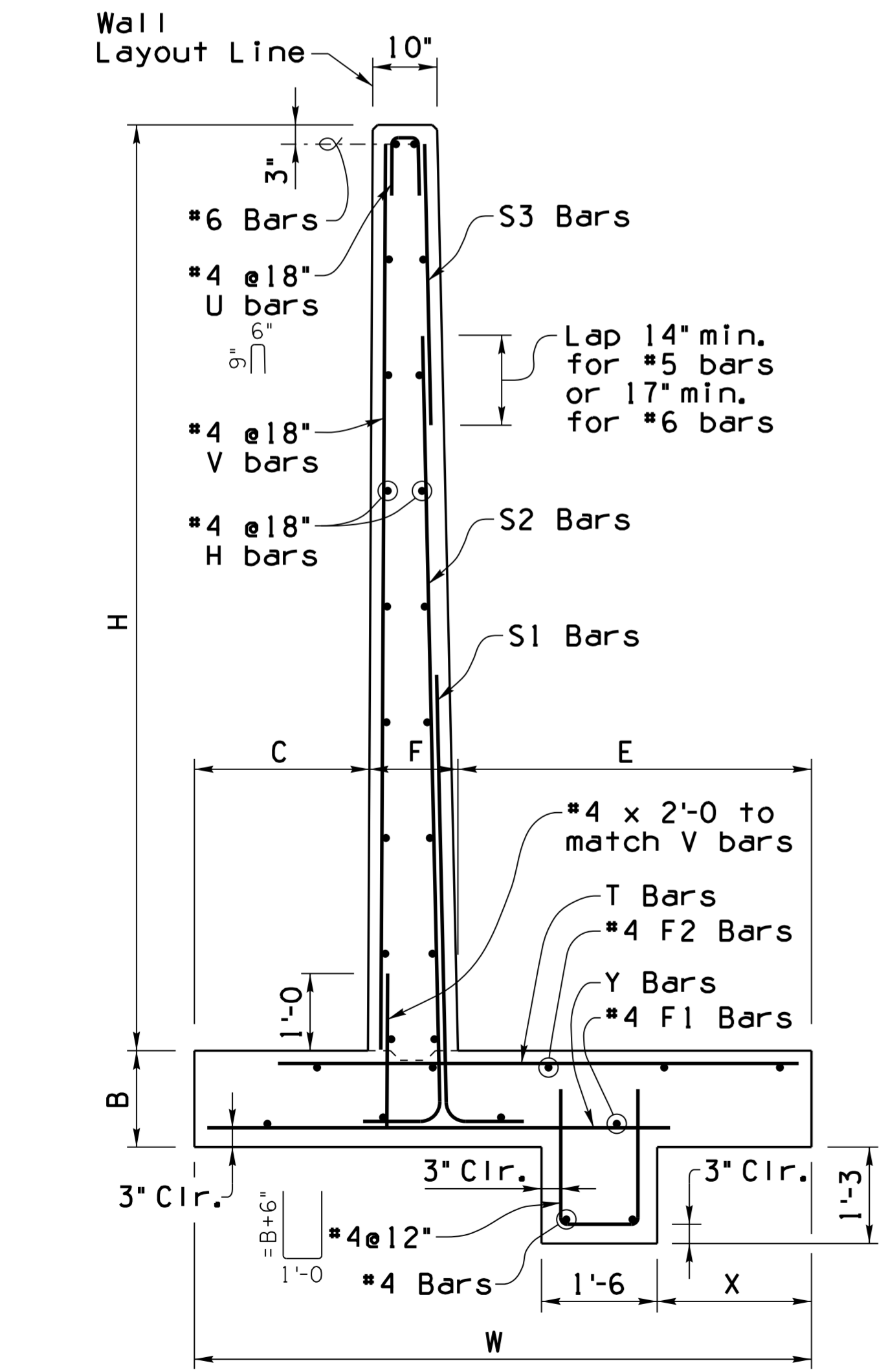


Note to Designer:
 The information presented in this Standard Detail has been prepared in accordance with recognized engineering principles and is for general use. It should not be used for specific application without competent professional examination and verification of its suitability and applicability by a licensed professional engineer. Contents within the inner border line shall not be altered.

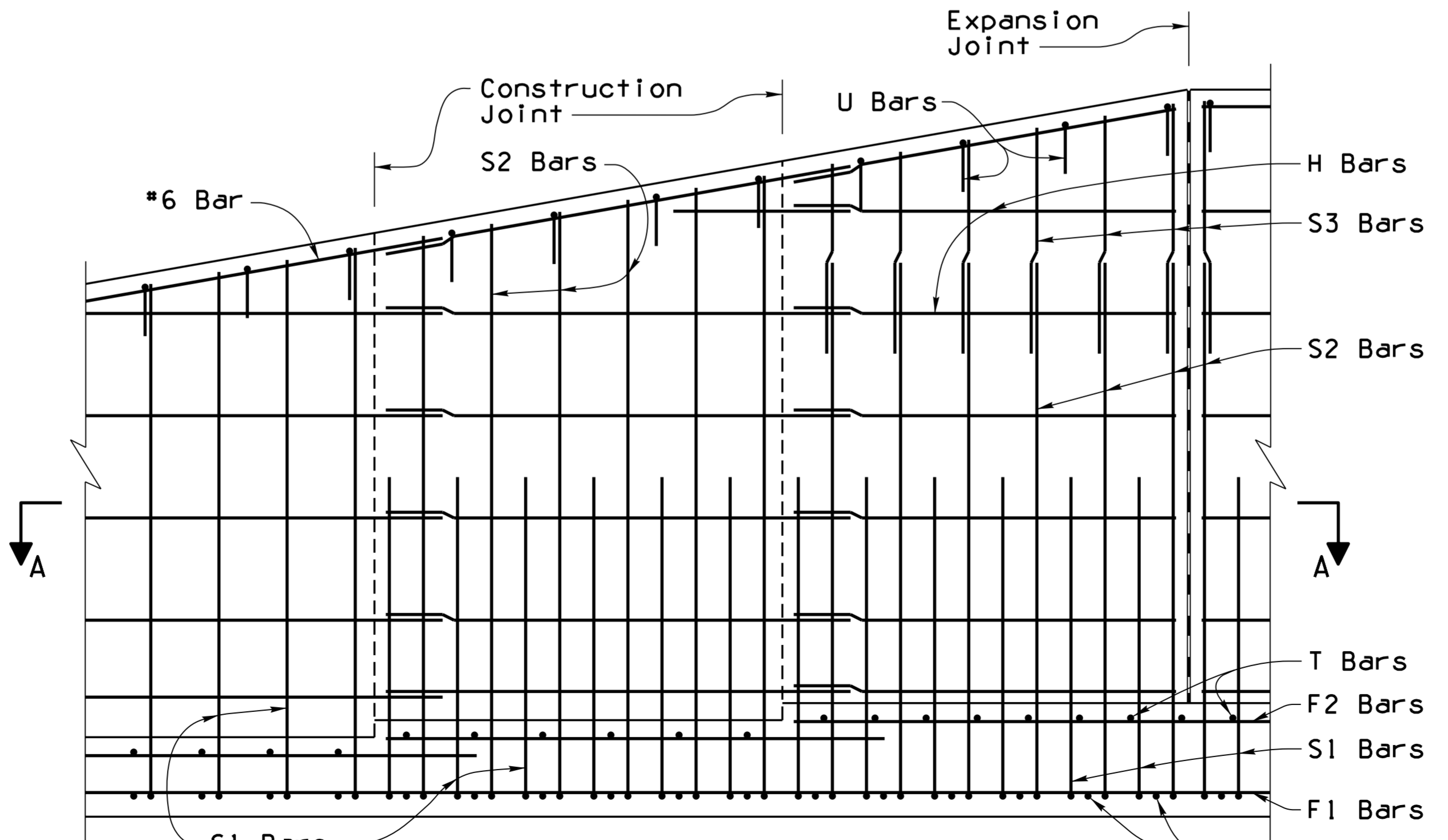
NO.	DESCRIPTION OF REVISIONS	MADE BY	DATE
1	Original Issue	S.J.H.	9-10
2	General updates, added limit state values and notes.	D.B.B.	1-15
3			
4			



TYPICAL SECTION (Case I, II, III)



TYPICAL WALL DETAILS



TYPICAL ELEVATION (Inside Face Reinforcing)

GENERAL NOTES:

Construction Specification - Arizona Department of Transportation Standard Specifications for Road and Bridge Construction, latest Edition.

Design Specifications - AASHTO LRFD Bridge Design Specifications, 7th Edition 2014.

Design:
 Soil weight = 120 p.c.f.
 Backfill angle of internal friction = 33°
 Existing ground angle of internal friction = 31°

All Concrete shall be Class "S" (f'c = 3000 psi).

Reinforcing steel shall conform to ASTM Specification A615. All reinforcing shall be furnished as Grade 60.

All bends and hooks shall meet the requirements of AASHTO LRFD Article 5.10. All bend dimensions for reinforcing steel shall be out-to-out of bars. All placement dimensions for reinforcing steel shall be to center of bars unless noted otherwise.

All reinforcing steel shall have 2 inch clear cover unless noted otherwise.

Chamfer all exposed corners 3/4" unless noted otherwise.

Compact structure backfill for footing and wall base minimum 100 percent of ASTM D698 max. dry density.

See Project Plans for wall layout, top of footing and finished grade elevations, footing step and wall joint locations. Construction Joints shall match the locations of construction joints. See Project Plans for wall surface treatment. Increase the wall thickness at the face for the depth of surface treatment.

Dimensions shall not be scaled from drawings.

Pay item measure of square foot of wall constructed is measured along front face of wall from top of footing to top of wall cap. Pay item includes all labor and materials for excavation, backfill, drainage and reinforced concrete wall with footing.

Item No. 9140178 RETAINING WALL (REINFORCED CONCRETE CANTILEVER)
 Measure: Square Foot

NOTE:
 For Retaining Wall Dimensions, Quantities and additional Details, see SD 7.01 (2 to 5).

DESIGN APPROVED <i>Celina Aman</i>		ARIZONA DEPARTMENT OF TRANSPORTATION INFRASTRUCTURE DELIVERY AND OPERATIONS DIVISION BRIDGE GROUP STRUCTURE DETAIL	
APPROVED FOR DISTRIBUTION <i>[Signature]</i>		RETAINING WALL (REINFORCED CONCRETE CANTILEVER)	
ROUTE	PROJECT NO.	FA NO.	DRAWING NO. SD 7.01 (1 of 5)
LOCATION			SHEET NO. OF