

FEDERAL REGION	STATE	PROJECT NO.	SHEET NO.	TOTAL SHEETS	AS BUILT
9	ARIZ.				

GENERAL NOTES:
 Construction Specification - Arizona Department of Transportation Standard Specifications for Road and Bridge Construction, Latest Edition.

Design Specifications - AASHTO Standard Specifications for Structural Supports for Highway Signs, Luminaires and Traffic Signals, Edition of 1994.

All concrete shall be Class 'S'.
 Reinforcing steel shall conform to ASTM Specification A615 (Grade 60).

Structural Steel shall conform to ASTM Specification A36 unless noted otherwise.

Stresses:
 Class 'S' concrete f'c = 3500 psi
 Grade 60 reinforcing steel fs = 24000 psi
 Structural steel fs = 20000 psi

All bolts shall conform to ASTM Specification A325. All bolts, nuts and washers shall be galvanized in accordance with the requirements of ASTM A153. All other steel shall be galvanized after fabrication in accordance with ASTM A123.

Wind Loading: 80 MPH Velocity.

All Tubular Structural Frame Pipes shall be welded or seamless steel pipes and shall conform to ASTM Specifications:
 A53, Grade B, Type E or S
 A252, Grade 2, Type E or S
 A106, Grade B, Type S only
 AP15L, Grade B, Type E or S
 AP15LX, Grade X42, Type E or S

Project Plans shall provide an elevation view of each sign structure with location (station and offset), ELEV. A, ELEV. B, ELEV. C, and Sign panel dimensions ('A', and 'D').

See Project Plans for length and location of exit panels, if required.

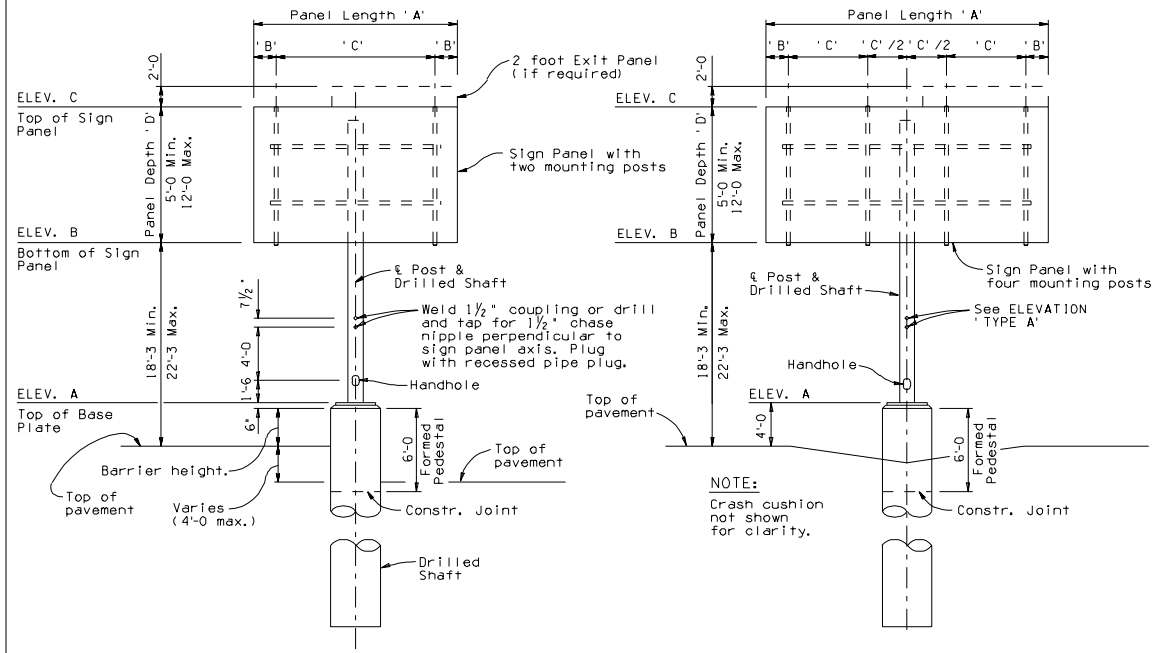
Dimensions shall not be scaled from drawings.

PAY ITEM NOTES:
 Pay item for sign structure foundation includes the drilled shaft and the formed pedestal on drilled shaft and the anchor bolt assembly.

Item No. 6060163
 SIGN STRUCTURE (MEDIAN) (TWO SIDED)
 Measure: Each

Item No. 6060239
 FOUNDATION FOR SIGN STRUCTURE (MEDIAN)
 Measure: Each

DESIGN APPROVED <i>Shafiq H. Hasan</i>		ARIZONA DEPARTMENT OF TRANSPORTATION INTERNAL TRANSPORTATION DIVISION BRIDGE GROUP STRUCTURE DETAIL	
APPROVED FOR DISTRIBUTION <i>Jean A. Nelms</i>		MEDIAN SIGN STRUCTURE (TWO SIDED) ELEVATION & NOTES	
ROUTE	LOCATION	SD	DRAWING NO. 9.011 (of 5)
TRACS NO.			OF



ELEVATION 'TYPE A'
 Shown with median barrier

ELEVATION 'TYPE B'
 Shown without median barrier

	Dimensions			Nominal Pipe Dia. inches	Pipe Wall thickness inches
	'A'	'B'	'C'		
Type A 2 Mounting Posts	8'-0"	1'-6"	5'-0"	14	0.938
	9'-0"	1'-9"	5'-6"	14	0.938
	10'-0"	2'-0"	6'-0"	14	0.938
	11'-0"	2'-0"	7'-0"	14	0.938
	12'-0"	2'-3"	7'-6"	14	0.938
	13'-0"	2'-6"	8'-0"	14	0.938
	14'-0"	1'-0"	4'-0"	16	1.031
	15'-0"	1'-0"	4'-4"	16	1.031
	16'-0"	1'-0"	4'-8"	16	1.031
	17'-0"	1'-0"	5'-0"	16	1.031
Type B 4 Mounting Posts	18'-0"	1'-0"	5'-4"	16	1.031
	19'-0"	1'-0"	5'-8"	16	1.031
	20'-0"	1'-6"	5'-8"	16	1.031
	21'-0"	1'-6"	6'-0"	20	0.750
	22'-0"	1'-6"	6'-4"	20	0.750
	23'-0"	1'-6"	6'-8"	20	0.750
	24'-0"	1'-6"	7'-0"	20	0.750
	24'-0"	1'-6"	7'-0"	20	0.750
	25'-0"	2'-0"	7'-0"	20	0.750

WELDING NOTES:

Welding of structural tubing shall conform to the requirements of the American Welding Society, Structural Welding Code, D1.1-98, as modified by the AASHTO Standard Specifications for Welding of Structural Steel Highway Bridges, 1996. All other welding shall conform to the requirements of the American Welding Society, ANSI/AASHTO/AWS D1.5-96 Bridge Welding Code. All welding shall be continuous unless noted otherwise. All butt welds shall be full penetration using prequalified welding procedures and shall be tested by ultrasonic testing. All butt welds shall be ground flush, full width. Grinding striations shall be parallel to length of member.

The Column to base plate weld shall be tested by ultrasonic testing.

Note to Designer: The information presented in this standard detail has been prepared in accordance with recognized engineering practices and standards. It is intended for general reference only. The user is responsible for obtaining all necessary information and verification of its suitability and applicability by a licensed professional engineer. Comments within the inner barrier line shall not be altered.

DATE	BY	DESCRIPTION OF REVISION