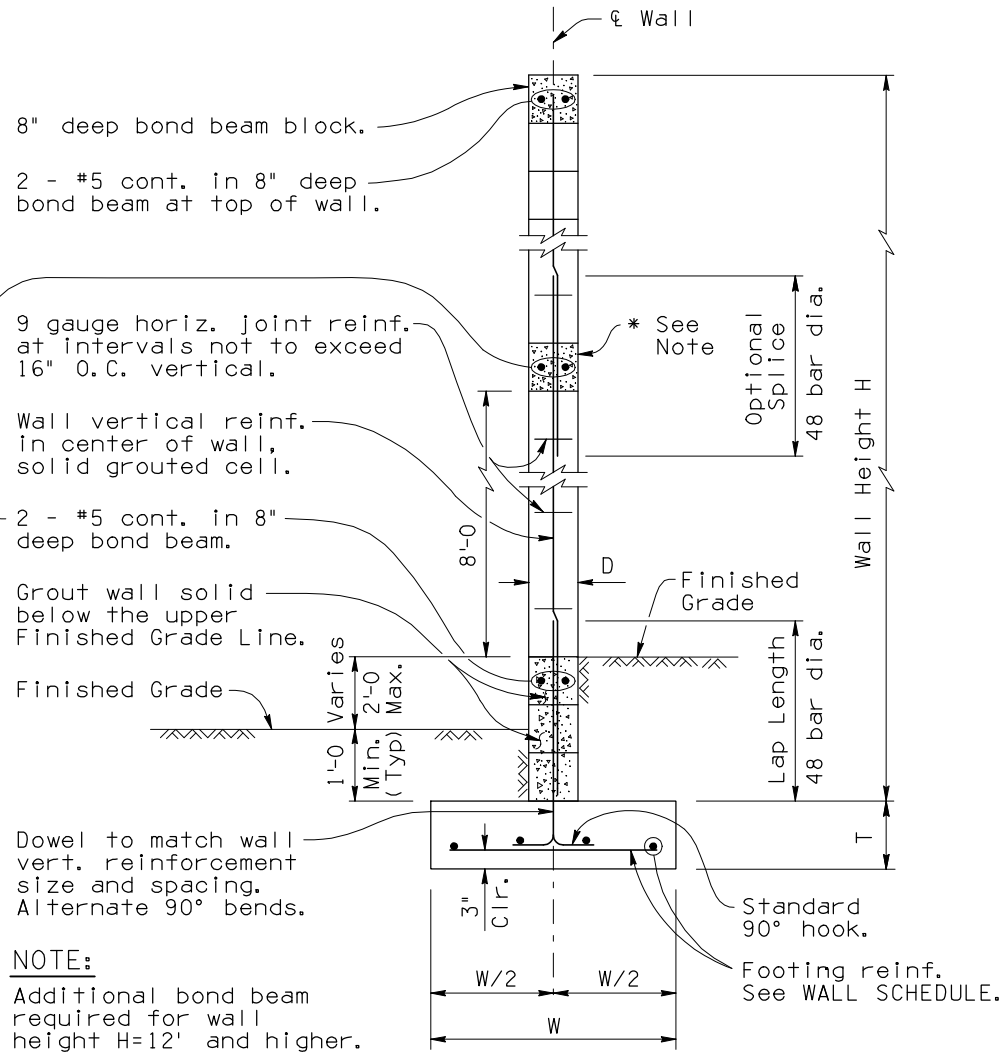
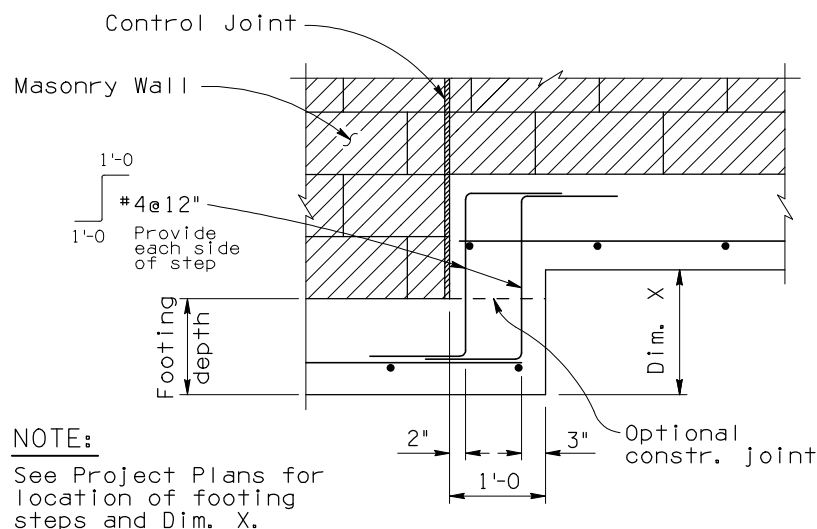


Note to Designer:
 The information presented in this Standard Detail has been prepared in accordance with recognized engineering principles and is for general use. It should not be used for specific application without competent professional examination and verification of its suitability and applicability by a licensed professional engineer. Contents within the inner border line shall not be altered.

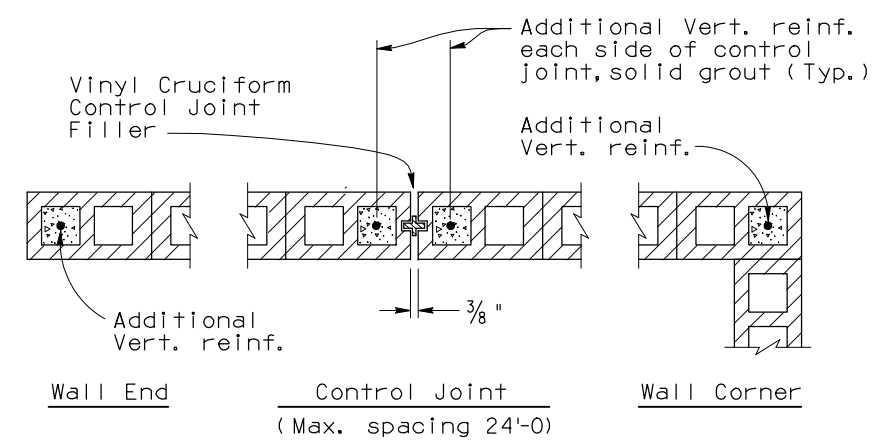
| NO. | DESCRIPTION OF REVISIONS | MADE BY | DATE |
|-----|------------------------------------|---------|-------|
| 1 | Original Issue | S.U.H. | 10-99 |
| 3 | Clarify Joint Detail | S.U.H. | 11-05 |
| 4 | Revise Reinforcing, General Update | S.U.H. | 02-07 |
| 5 | Revise Notes, General Update | S.U.H. | 4-10 |



TYPICAL WALL SECTION
(For Wall Height 0'-0 to 17'-11)

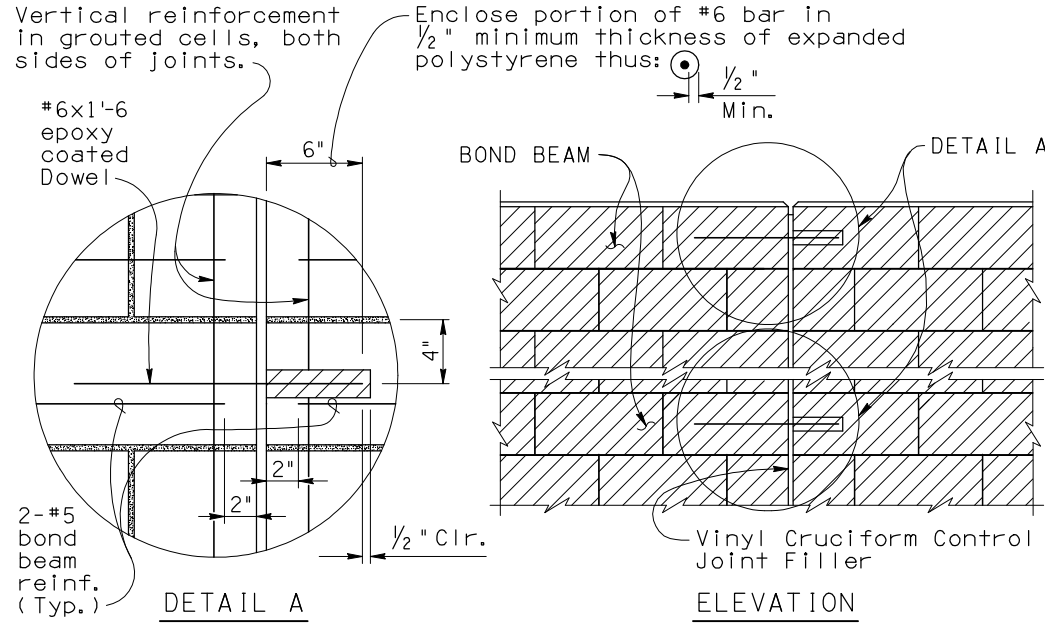


FOOTING STEP DETAIL



WALL DETAILS AT JOINTS AND ENDS

NOTE:
See DWG. SD 8.02 (2 of 2) "TYPICAL SECTIONS THROUGH VERTICAL WALL REINFORCEMENT" for similar details not shown here.



TYPICAL BOND BEAM DETAIL AT CONTROL JOINT
(For bond beams above the upper Finished Grade Line)

| Wall Height H | Wall Thick D** | Ftg. Depth T | Ftg. Width W | Reinforcing*** | | | Factored Average Soil Bearing Pressure (psf) |
|-----------------|----------------|--------------|--------------|----------------|---------------|--------------|--|
| | | | | Wall | Footing | | |
| | | | | Vert. | Bottom Trans. | Bottom Long. | |
| 0'-0 to 3'-11 | 8" | 10" | 1'-6 | #4@24" | #4@24" | 2-#4 | 1,000 |
| 4'-0 to 5'-11 | 8" | 10" | 2'-0 | #4@24" | #4@24" | 2-#4 | 1,200 |
| 6'-0 to 7'-11 | 8" | 10" | 2'-6 | #5@24" | #5@24" | 4-#4 | 1,300 |
| 8'-0 to 9'-11 | 8" | 10" | 3'-0 | #5@24" | #5@16" | 4-#4 | 1,400 |
| 10'-0 to 11'-11 | 8" | 1'-0 | 3'-6 | #5@16" | #5@16" | 4-#5 | 1,500 |
| 12'-0 to 13'-11 | 12" | 1'-3 | 4'-6 | #5@16" | #5@16" | 6-#5 | 1,600 |
| 14'-0 to 15'-11 | 12" | 1'-6 | 5'-0 | #6@16" | #6@16" | 6-#5 | 1,700 |
| 16'-0 to 17'-11 | 12" | 1'-6 | 5'-6 | #8@16" | #6@16" | 6-#5 | 1,800 |

** Nominal Dimension, *** Additional Reinf. required at Control Joints.

GENERAL NOTES:
 Construction Specification - Arizona Department of Transportation Standard Specifications for Road and Bridge Construction, latest Edition, ACI 530.1, Specifications for Masonry Structures.

Design Specifications - AASHTO LRFD Bridge Design Specifications, 4th Edition 2007.

Wind Velocity 80 MPH, Exposure C.
 Wind pressure 18.0 psf for wall height under 12'-0.
 Wind pressure 25.0 psf for wall height over 12'-0.

Special Inspection is required for all masonry wall construction. Vertical Cells containing reinforcements shall be grouted solid full height. Bond Beams with reinforcements shall be grouted solid full length.

All Concrete shall be Class "S" (f'c = 3,000 psi).

Reinforcing steel shall conform to ASTM Specification A615. All reinforcing shall be furnished as Grade 60 (fy = 60,000 psi).

All bends and hooks shall meet the requirements of AASHTO LRFD Article 5.10. All bend dimensions for reinforcing steel shall be out-to-out of bars. All placement dimensions for reinforcing steel shall be to center of bars unless noted otherwise.

All reinforcing steel shall have 2 inch clear cover unless noted otherwise.

Compact backfill for footing and wall base minimum 95 percent of ASTM D698 maximum dry density.

See Project Plans for wall layout, top of footing and finished grade elevations, footing step and wall joint locations. Height of wall may vary ± 2 inches. Control joints shall occur at intervals not to exceed 24'-0. See Project Plans for wall surface treatment and type of block.

Pay item is measured as wall height H times length of wall, and pay item includes all labor and materials for excavation, backfill, concrete footing and masonry wall with reinforcements.

Dimensions shall not be scaled from drawings.

Item No. 9140137 SOUND BARRIER WALL (MASONRY)
 Measure: Square Foot

(GENERAL NOTES Continued Next Sheet)

| | | | |
|--|-------------|--|---------------------------------|
| DESIGN APPROVED <i>Shafiq U. Hasan</i> | | ARIZONA DEPARTMENT OF TRANSPORTATION INTERMODAL TRANSPORTATION DIVISION BRIDGE GROUP STRUCTURE DETAIL | |
| APPROVED FOR DISTRIBUTION <i>Jason A. Nehme</i> | | SOUND BARRIER WALL (MASONRY) | |
| ROUTE | PROJECT NO. | FA NO. | DRAWING NO. SD 8.02 (1 of 2) |
| LOCATION | | | SHEET NO. OF |