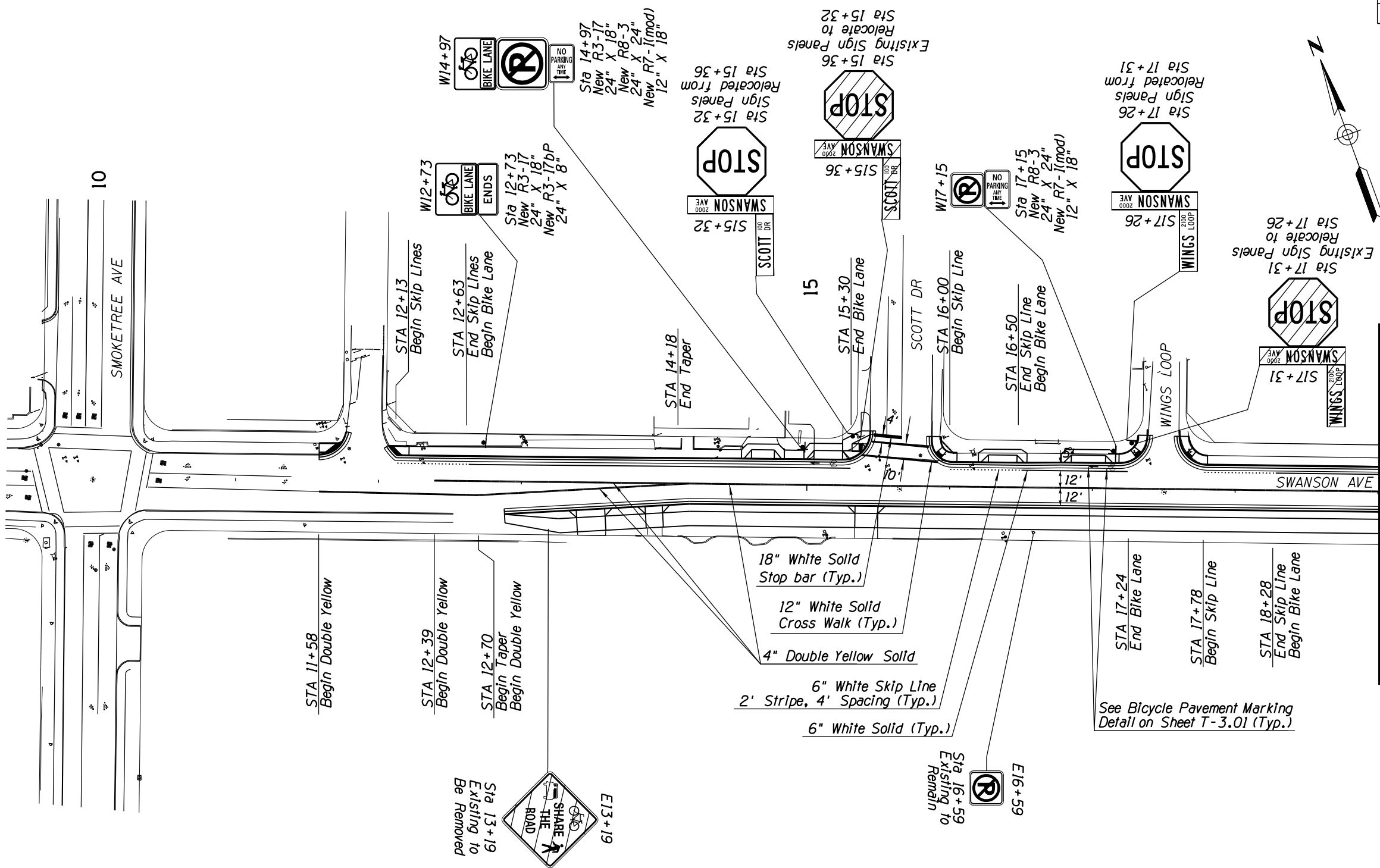
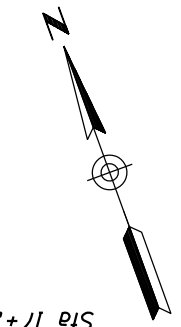


F.H.W.A. REGION	STATE	PROJECT NO.	SHEET NO.	TOTAL SHEETS	RECORD DRAWING
9	ARIZ.	LHV-0(208)T	42	45	

0000 MO LHV

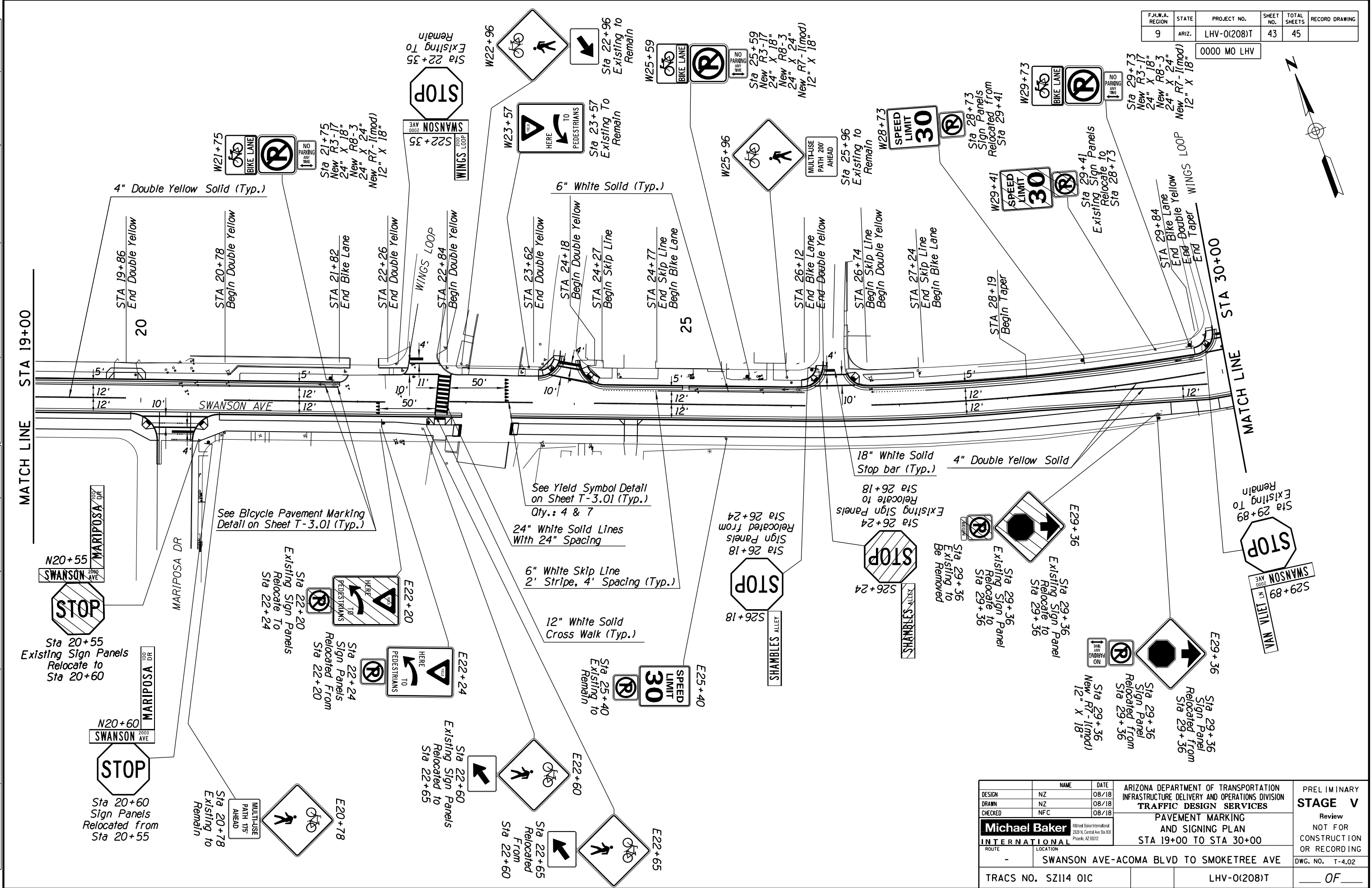
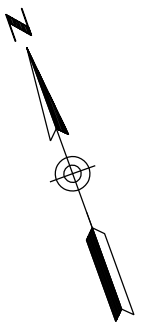


SURVEY NO. FINISHED PLANS DATE REVISIONS LOCATION DATE FINISHED PLANS SURVEY NO. REVISIONS LOCATION DATE

DESIGN	NZ	DATE	08/18	ARIZONA DEPARTMENT OF TRANSPORTATION INFRASTRUCTURE DELIVERY AND OPERATIONS DIVISION TRAFFIC DESIGN SERVICES	PRELIMINARY STAGE V Review NOT FOR CONSTRUCTION OR RECORDING
DRAWN	NZ	DATE	08/18		
CHECKED	NFC	DATE	08/18		
Michael Baker International <small>Michael Baker International 2525 N. Central Ave Ste 800 Phoenix, AZ 85012</small>				PAVEMENT MARKING AND SIGNING PLAN STA 10+00 TO STA 19+00	
INTERNATIONAL					
ROUTE		LOCATION		DWG. NO. T-4.01	
-		SWANSON AVE-ACOMA BLVD TO SMOKETREE AVE		LHV-0(208)T	
TRACS NO. SZ114 OIC			OF		

F.H.W.A. REGION	STATE	PROJECT NO.	SHEET NO.	TOTAL SHEETS	RECORD DRAWING
9	ARIZ.	LHV-0(208)T	43	45	

0000 MO LHV

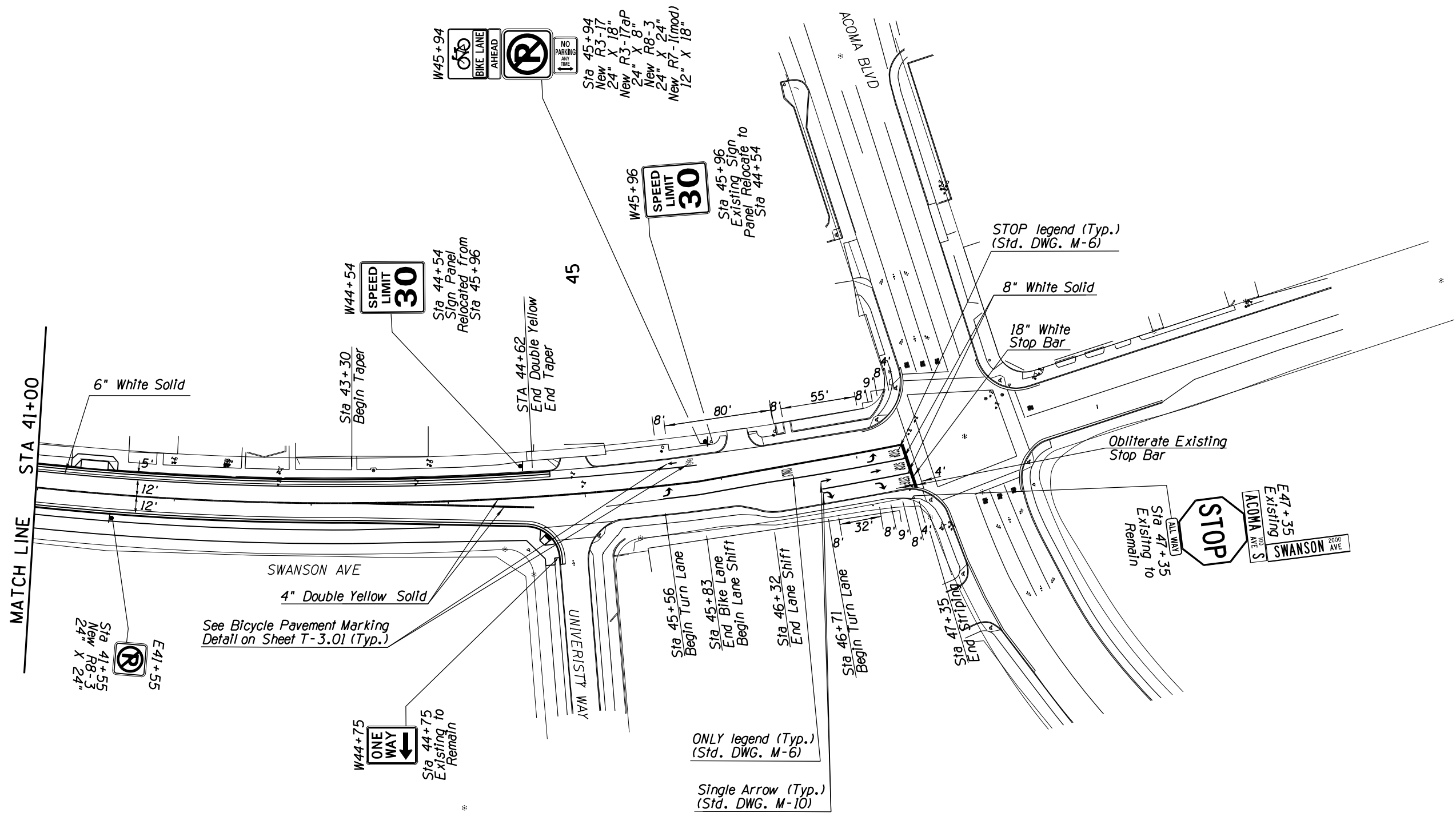
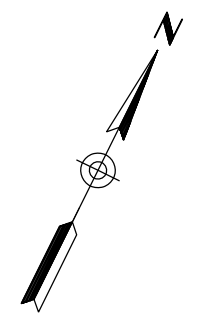


DESIGN	NAME	DATE	ARIZONA DEPARTMENT OF TRANSPORTATION INFRASTRUCTURE DELIVERY AND OPERATIONS DIVISION TRAFFIC DESIGN SERVICES	PRELIMINARY STAGE V Review NOT FOR CONSTRUCTION OR RECORDING
DRAWN	NZ	08/18		
CHECKED	NFC	08/18		
Michael Baker International <small>Michael Baker International 2525 N. Central Ave. Suite 800 Phoenix, AZ 85012</small>			PAVEMENT MARKING AND SIGNING PLAN STA 19+00 TO STA 30+00	
INTERNATIONAL				
ROUTE: - LOCATION: SWANSON AVE-ACOMA BLVD TO SMOKETREE AVE			DWG. NO. T-4.02	
TRACS NO. SZ114 OIC			LHV-0(208)T	

SURVEY NO. FINISHED PLANS. DATE. REVISIONS. LOCATION. DATE. REVISIONS. FINISHED PLANS. DATE. REVISIONS.

F.H.W.A. REGION	STATE	PROJECT NO.	SHEET NO.	TOTAL SHEETS	RECORD DRAWING
9	ARIZ.	LHV-0(208)T	45	45	

0000 MO LHV



SURVEY NO. FINISHED PLANS DATE LOCATION REVISIONS FINISHED PLANS DATE SURVEY NO. FINISHED PLANS DATE LOCATION REVISIONS FINISHED PLANS DATE SURVEY NO.

DESIGN	NZ	DATE	08/18	ARIZONA DEPARTMENT OF TRANSPORTATION INFRASTRUCTURE DELIVERY AND OPERATIONS DIVISION TRAFFIC DESIGN SERVICES	PRELIMINARY STAGE V Review NOT FOR CONSTRUCTION OR RECORDING
DRAWN	NZ	DATE	08/18		
CHECKED	NFC	DATE	08/18		
Michael Baker International <small>Michael Baker International 2525 N. Central Ave. Suite 800 Phoenix, AZ 85012</small>				PAVEMENT MARKING AND SIGNING PLAN STA 41+00 TO STA 49+00	
INTERNATIONAL					
ROUTE	SWANSON AVE-ACOMA BLVD TO SMOKETREE AVE			DWG. NO.	T-4.04
TRACS NO.	SZ114 OIC			LHV-0(208)T	OF