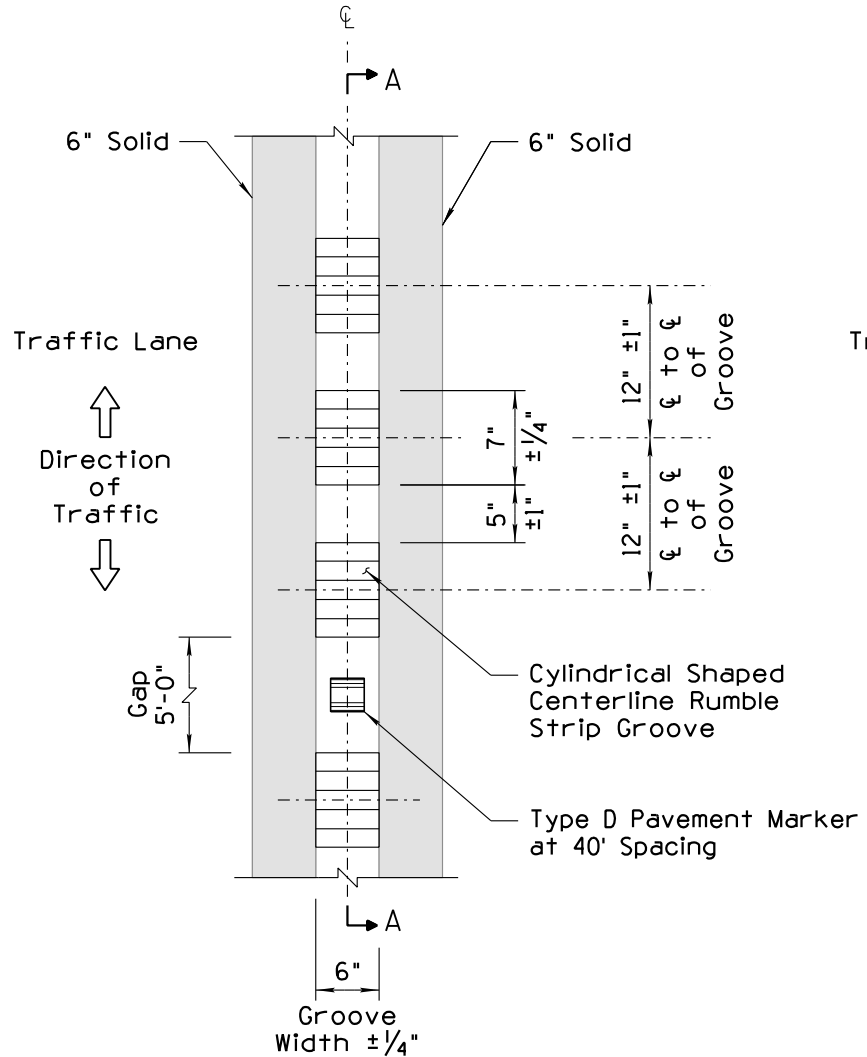
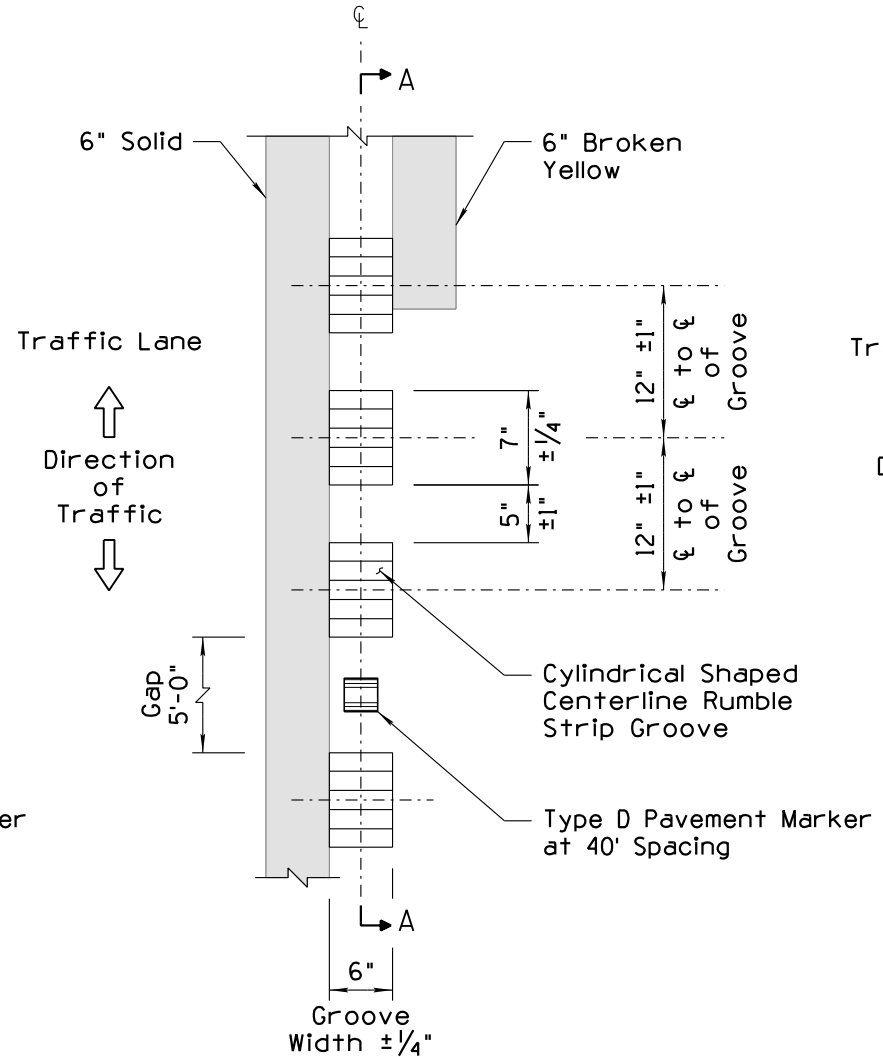


Note to Designer:
The information presented in this Standard Drawing has been prepared in accordance with recognized engineering principles and is for general use. It should not be used for specific application without competent professional examination and verification of its suitability and applicability by a licensed professional engineer. Contents within the inner border line shall not be altered.

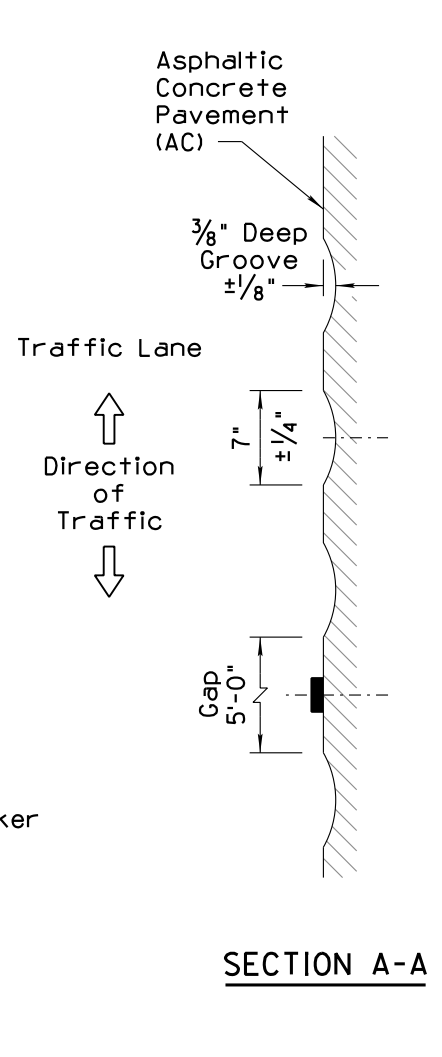
09/2019
PRIOR DISTRIBUTION DATE



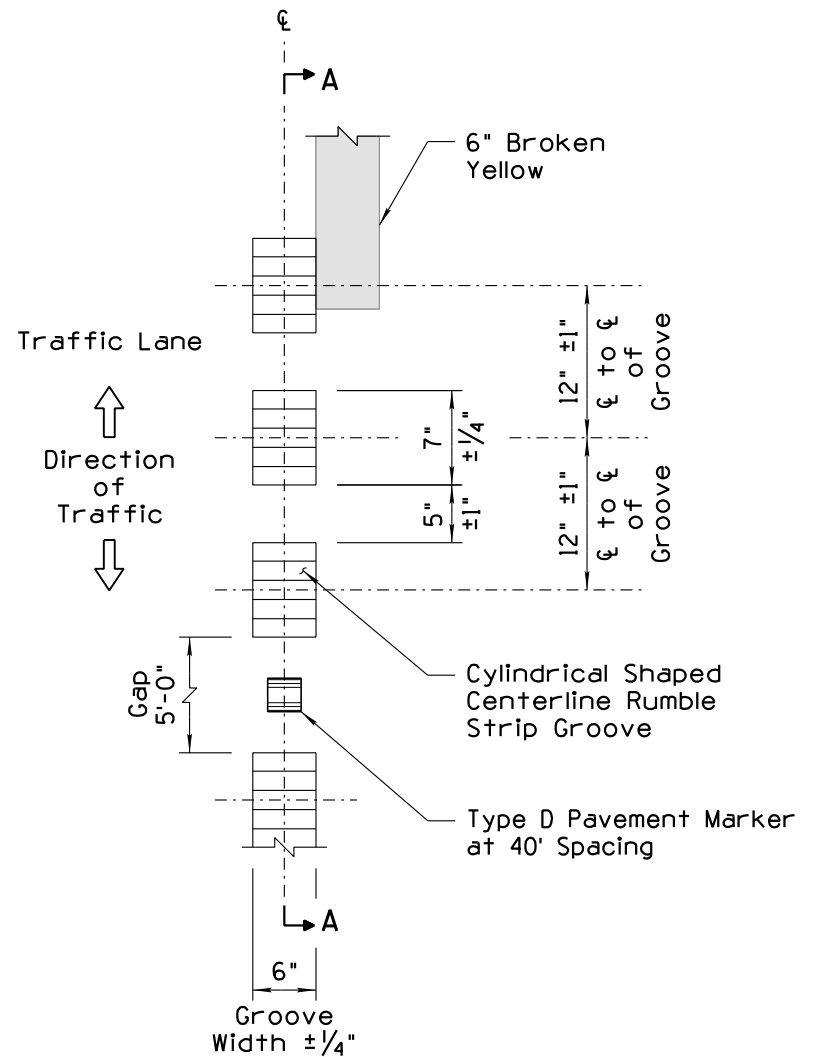
PLAN VIEW



PLAN VIEW



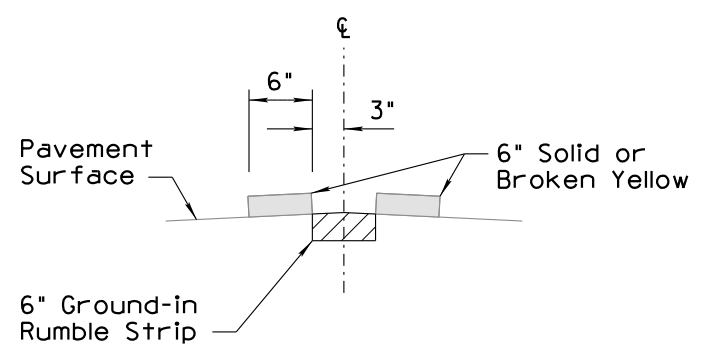
SECTION A-A



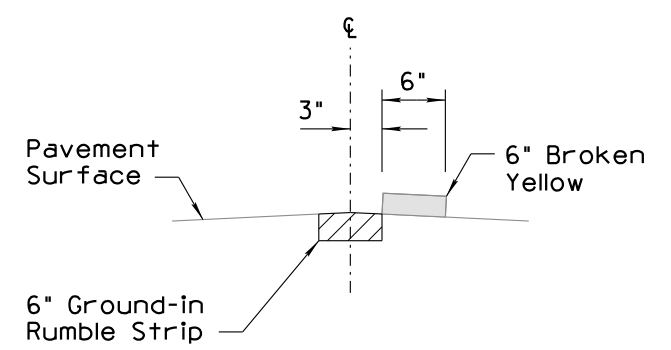
PLAN VIEW

NOTES:

1. Plans shall identify specific ground-in rumble strips locations and exceptions.
2. The longitudinal ground-in rumble strips groove and pattern shall be constructed by milling or grinding the indentations in the asphaltic concrete pavement.
3. The grinding machine shall be equipped with an acceptable guide that allows the rumble strips to be installed to the proper alignment within acceptable tolerances.
4. If permanent markings are not in place, to ensure proper rumble strips location, a temporary painted edge line shall be installed at the permanent location of the center lines prior to the installation of the ground-in rumble strips. The rumble strips shall follow the location of the painted center line.
5. The radius and configuration of the cutting/milling drum and machine shall be able to produce a smooth and consistent groove to the requirements of these standard drawings details.



PROFILE VIEW



PROFILE VIEW

STANDARDS ENGINEER H. LUNA RECOMMENDED FOR APPROVAL GROUP MANAGER M. HANNA APPROVED STANDARDS COMMITTEE APPROVED FOR DISTRIBUTION DATE 09/2021		ARCHIVED		ARIZONA DEPARTMENT OF TRANSPORTATION INFRASTRUCTURE DELIVERY AND OPERATIONS DIVISION TRAFFIC SIGNING & MARKING STANDARD DRAWING CENTERLINE RUMBLE STRIP GROOVE, PATTERN AND LOCATION DETAILS		DRAWING NO. M-22 (4 of 4)
---	--	----------	--	--	--	---------------------------------