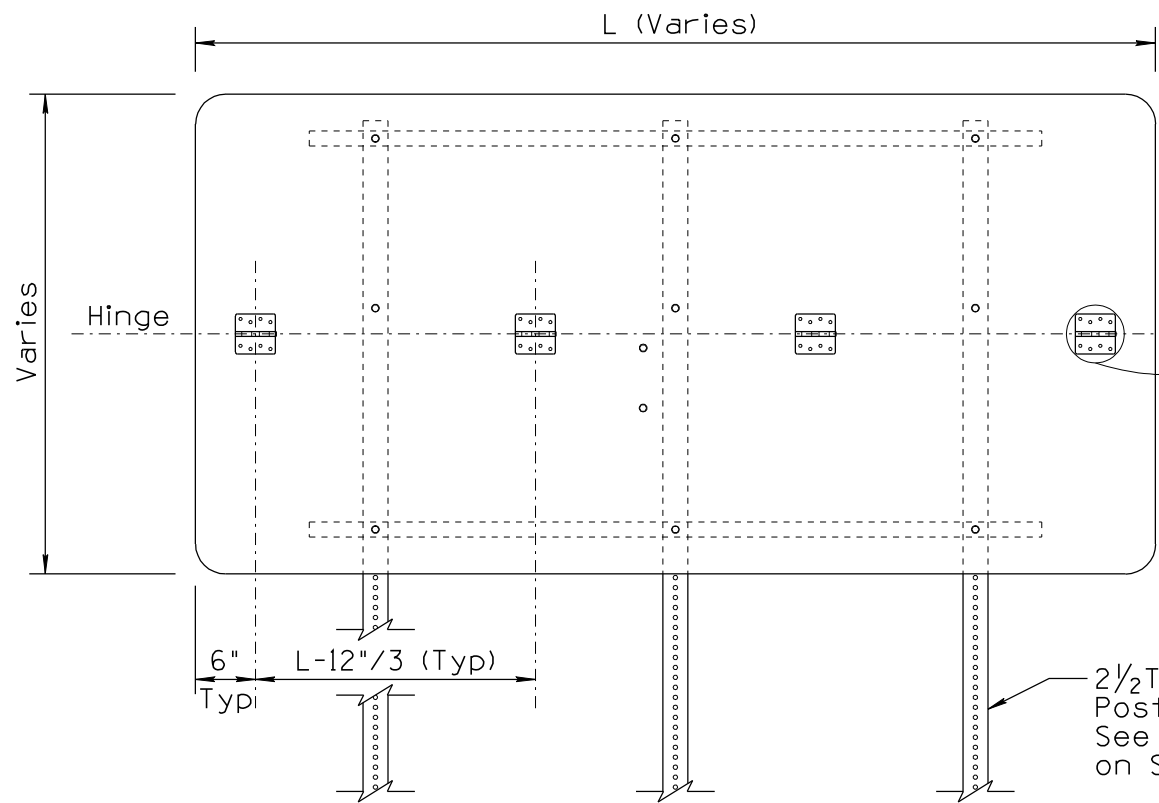
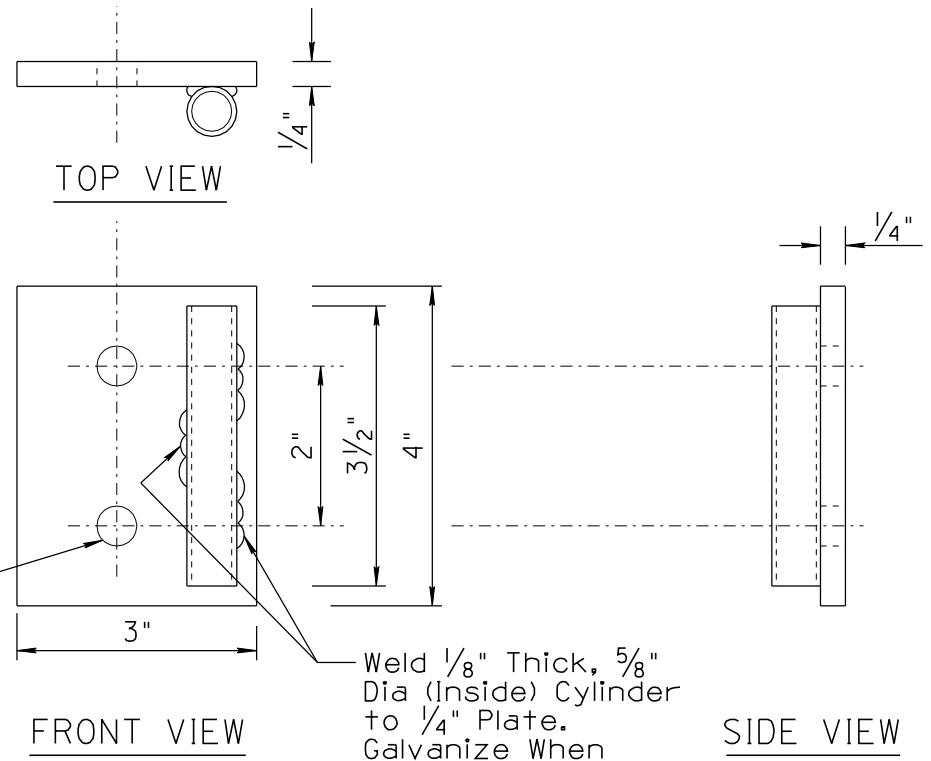


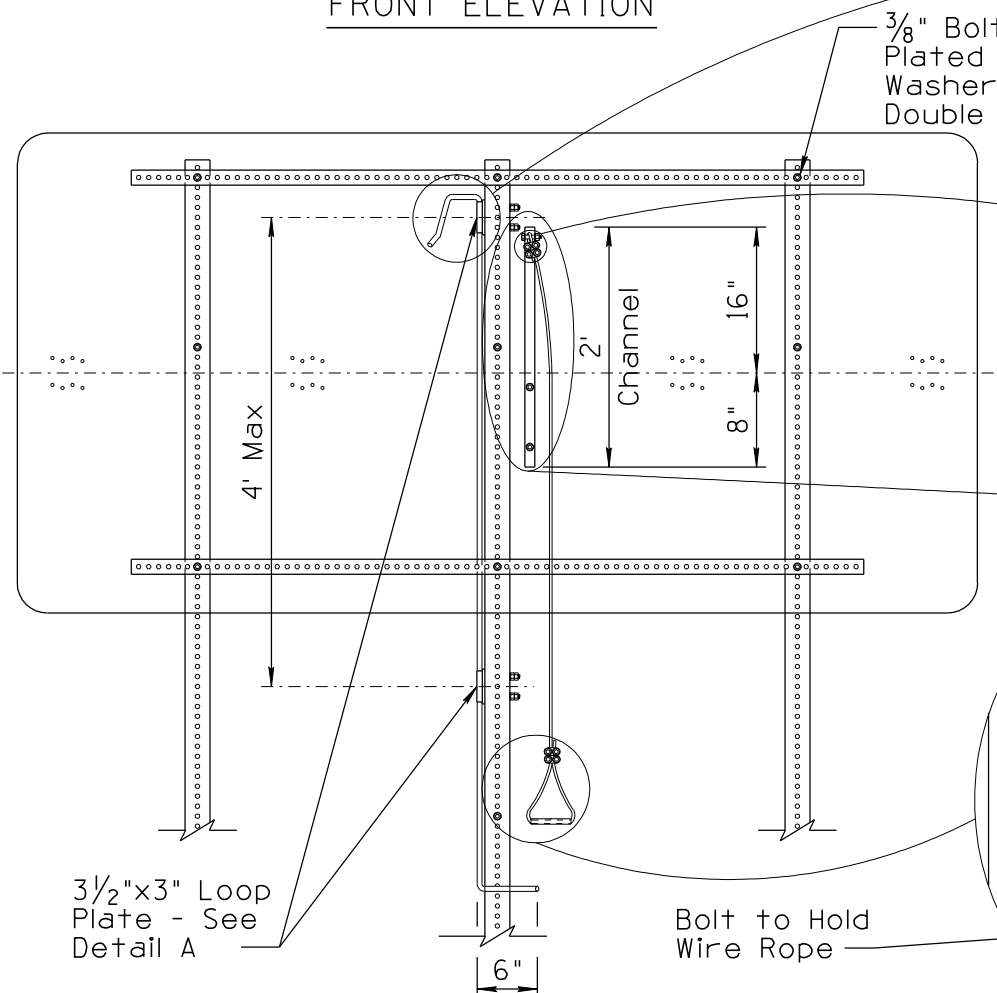
NO	DESCRIPTION OF REVISIONS	DATE	MADE BY
1	ORIGINAL ISSUE	4/07	L. LOPEZ
2	REVISED DRAWING, CHANGED TEXT CASE, UPDATED BORDER.	6/14	L. LOPEZ



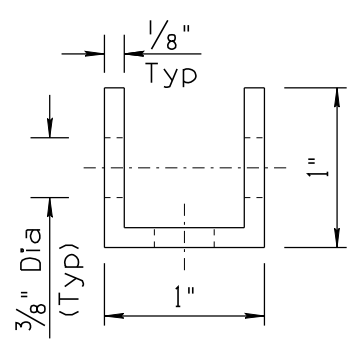
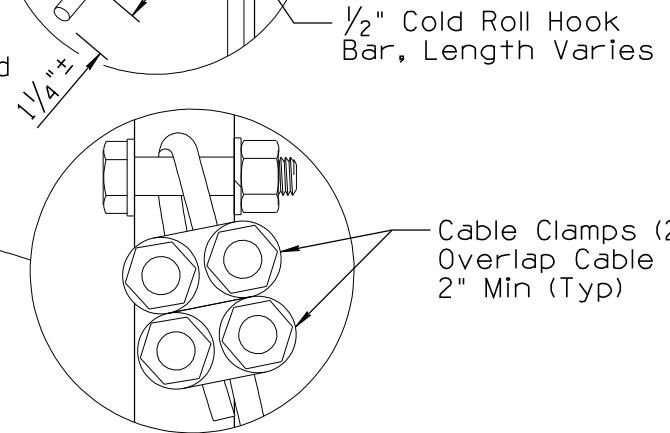
FRONT ELEVATION



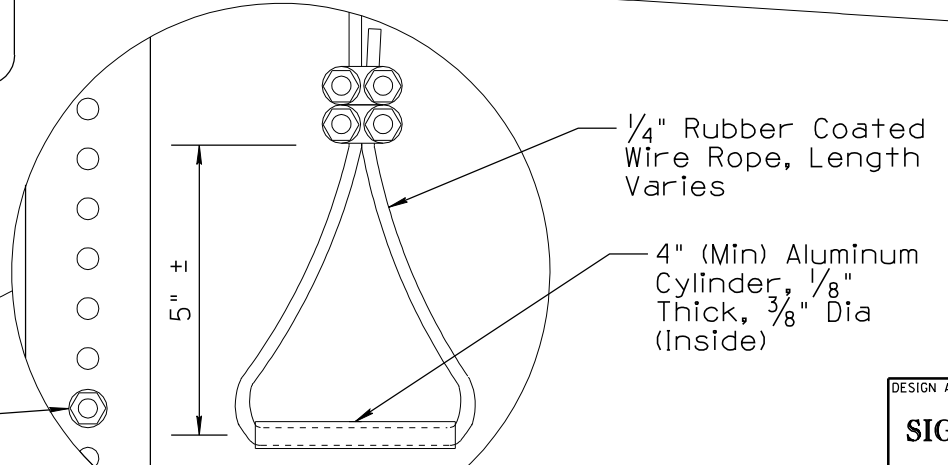
DETAIL A
LOOP PLATE



REAR ELEVATION



SECTION A-A



1" x 1" x 1" x 24" SQUARE OR U-SHAPED ALUMINUM CHANNEL

SHEET 1 OF 3
NOT TO SCALE

DESIGN APPROVED	ARIZONA DEPARTMENT OF TRANSPORTATION INTERMODAL TRANSPORTATION DIVISION TRAFFIC SIGNING & MARKING STANDARD DRAWINGS	REVISION 6/14
SIGNATURES		DRAWING NO. S-15
APPROVED FOR DISTRIBUTION	FOLDING RECTANGULAR SIGN ASSEMBLY	SHEET NO. 1 of 3
ON FILE		