

|    |  |      |          |
|----|--|------|----------|
| NO | DESCRIPTION OF REVISIONS                           | DATE | MADE BY  |
| 1  | NEW ISSUE  | 4/06 | DA/LL    |
| 2  | REVISED DRAWING, CHANGE TEXT CASE, UPDATED BORDER. | 6/14 | L. LOPEZ |

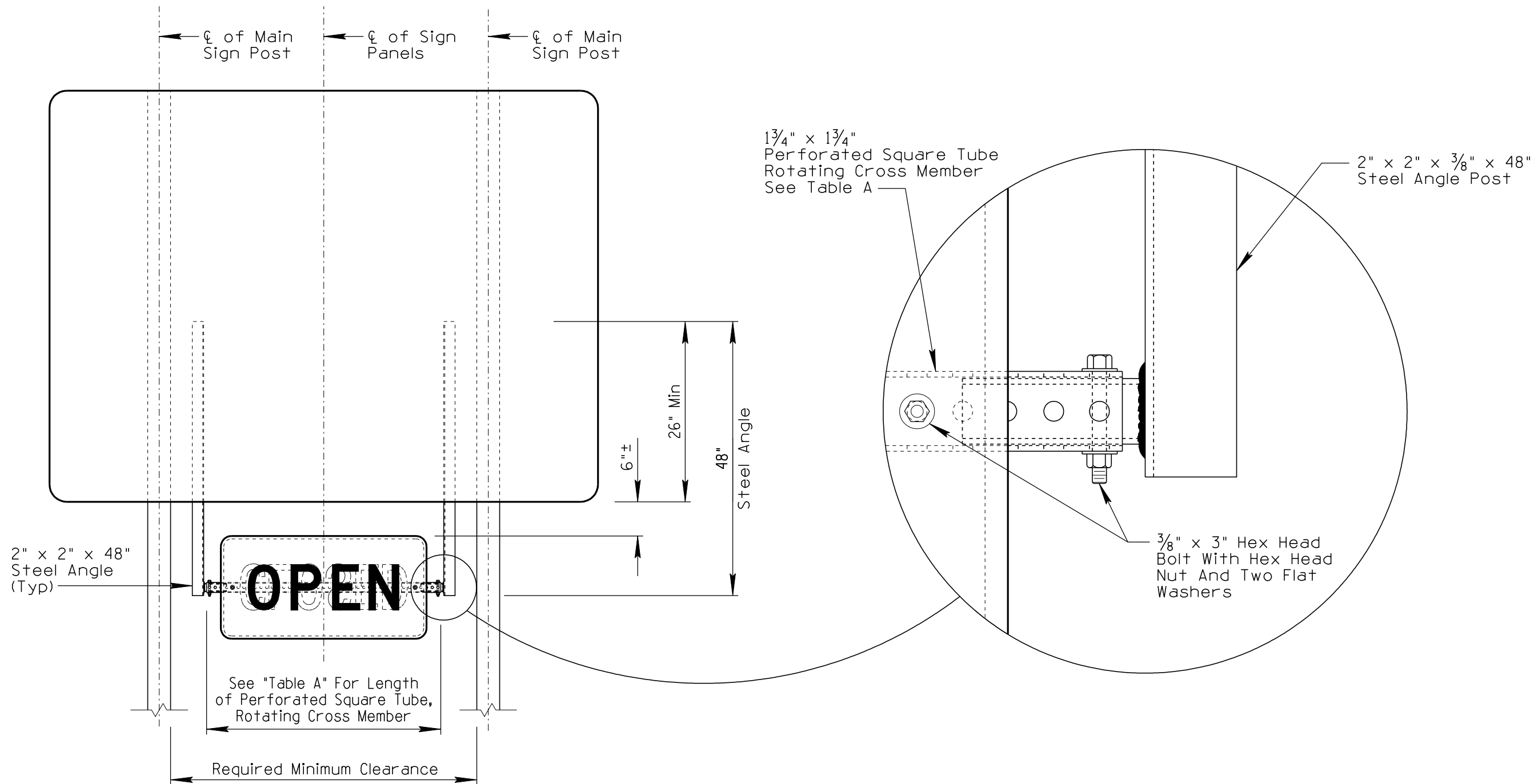


TABLE A

| SIGN SIZE (WIDTH) | PERFORATED SQUARE TUBE LENGTH | REQUIRED MINIMUM CLEARANCE SPACING OF MAIN SIGN POSTS | TYPICAL WIDTH OF MAIN SIGN PANEL |
|-------------------|-------------------------------|---|----------------------------------|
| 3'-0"             | 3'-5"                         | 4'-6"   | 8 ft & 9 ft                      |
| 4'-0"             | 4'-5"                         | 5'-6"   | 10 ft & Larger                   |

|                           |  |             |
|---------------------------|--|-------------|
| DESIGN APPROVED           | ARIZONA DEPARTMENT OF TRANSPORTATION<br>INTERMODAL TRANSPORTATION DIVISION<br>TRAFFIC SIGNING & MARKING<br>STANDARD DRAWINGS | REVISION    |
| <b>SIGNATURES</b>         |  | 6/14        |
| APPROVED FOR DISTRIBUTION | ROTATING<br>OPEN/CLOSED SIGN   | DRAWING NO. |
| <b>ON FILE</b>            |  | S-14        |
|                           |  | SHEET NO.   |
|                           |  | 1 of 3      |

NOT TO SCALE