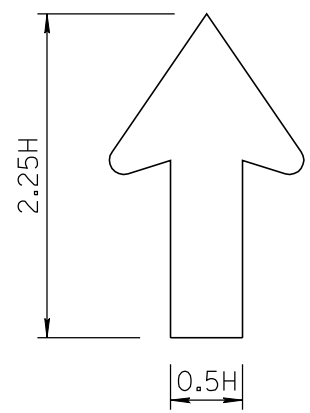
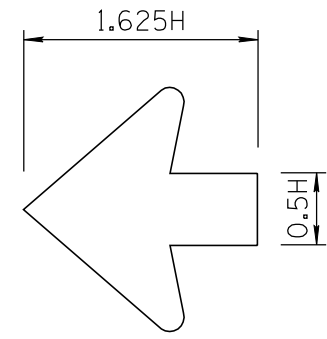


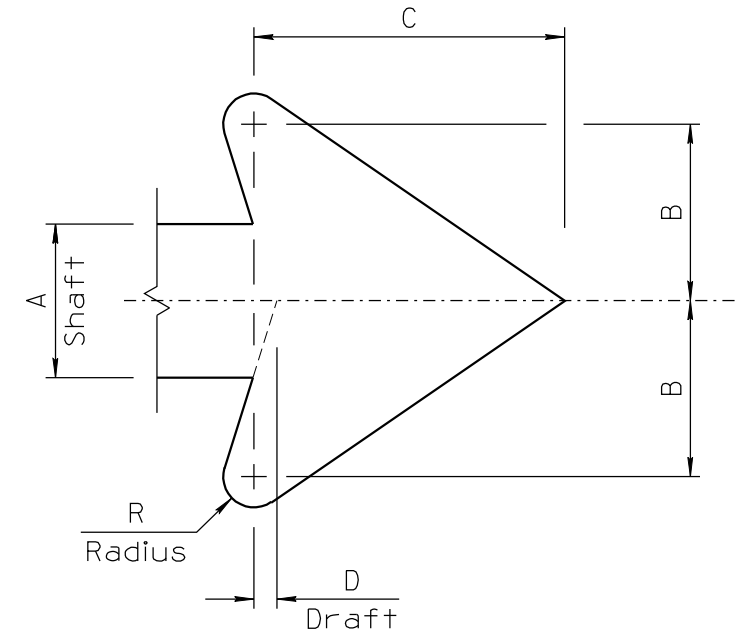
D1 ARROW
One Line Horizontal, Diagonal, or Vertical Arrow



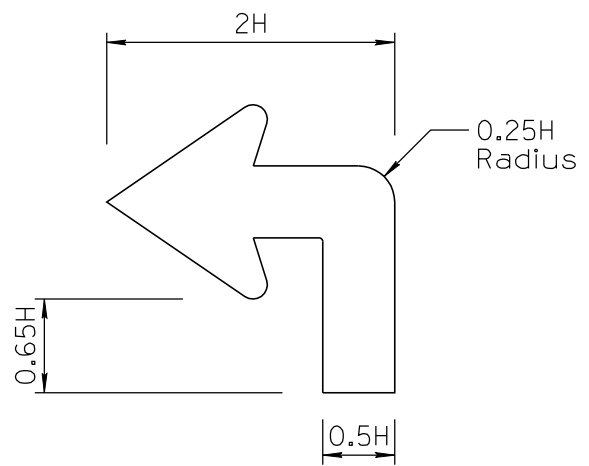
D2 ARROW
Two-Line Vertical or Diagonal Arrow



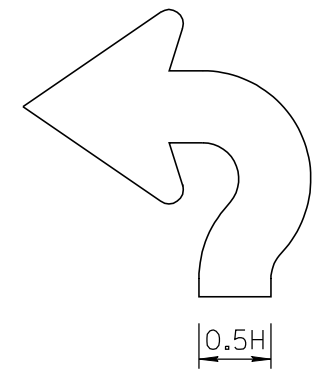
D3 ARROW
Two-Line Horizontal Arrow
Note: "B" dimension is 130% of normal



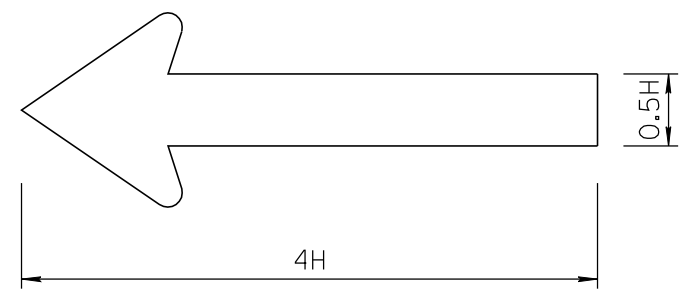
Standard Arrow Details



C1 ARROW
Advance Turn Arrow



C2 ARROW
Advance Turn Arrow (Roundabout)



D4 ARROW
Long Horizontal Arrow for Placement at Bottom of Sign Panel

ARROW DIMENSIONS					
H	A	B	C	D	R
2	1	1 ⁵ / ₃₂	2 ¹ / ₃₂	5 ⁵ / ₃₂	3 ³ / ₁₆
4	2	2 ⁵ / ₁₆	4 ¹ / ₁₆	5 ⁵ / ₁₆	3 ³ / ₈
6	3	3 ¹ / ₂	6 ¹ / ₈	7 ¹ / ₁₆	9 ⁹ / ₁₆
8	4	4 ⁵ / ₈	8 ¹ / ₈	5 ⁵ / ₈	1 ¹³ / ₁₆
10	5	5 ³ / ₄	10 ¹ / ₈	3 ³ / ₄	1
12	6	6 ⁷ / ₈	12 ³ / ₁₆	1 ¹⁵ / ₁₆	1 ¹³ / ₁₆
16	8	9 ³ / ₁₆	16 ¹ / ₄	1 ¹ / ₄	1 ⁵ / ₈
20	10	11 ¹ / ₂	20 ¹ / ₄	1 ¹ / ₂	2

NOTES:

- All dimensions are in inches.
- All arrowheads are standard Federal arrowheads except as noted.
- H = Tallest upper case letter height on sign legend.
- Type D arrows are typically used on guide signs for conventional roads. For guide signs on expressways and freeways, use Type A and B arrows on sheet 1.

NOT TO SCALE

DESIGN APPROVED	ARIZONA DEPARTMENT OF TRANSPORTATION INTERMODAL TRANSPORTATION DIVISION TRAFFIC SIGNING & MARKING STANDARD DRAWINGS	REVISION 6/14
SIGNATURES		DRAWING NO. S-12
APPROVED FOR DISTRIBUTION	TYPE C AND D ARROWS	SHEET NO. 2 of 3
ON FILE		