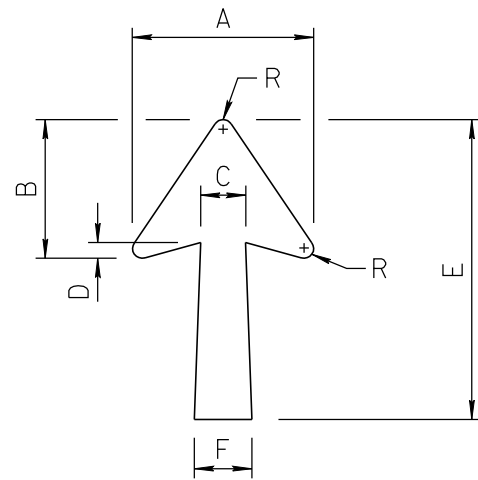
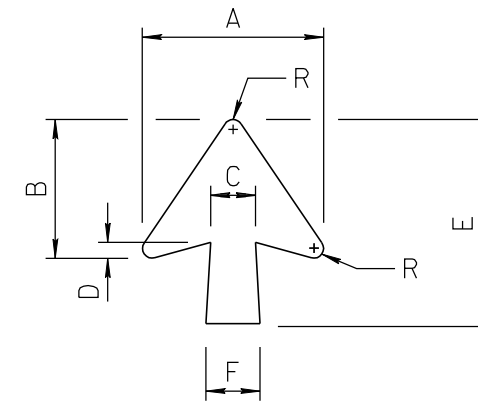


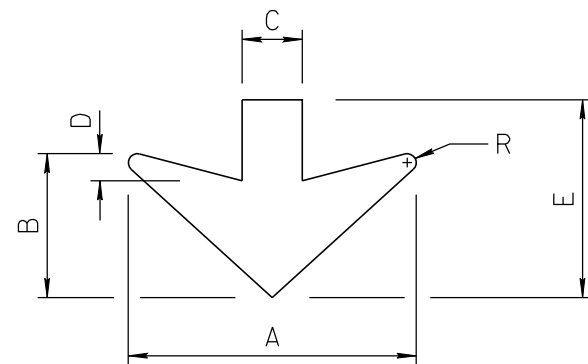
NO	DESCRIPTION OF REVISIONS	MADE BY	DATE	NO
1	NEW ISSUE	L. LOPEZ	2/08	3
2	REVISED NOTE #2, REMOVED LOOP ARROW, NEW CODES.	L. LOPEZ	6/14	4



TYPE A ARROW							
Upper Case Letter Size	Dimensions						
	A	B	C	D	E	F	R
6 - 8	15 ¹ / ₈	11 ⁹ / ₁₆	3 ³ / ₄	1 ⁵ / ₁₆	25	4 ³ / ₄	1 ³ / ₁₆
10 - 13.33	18 ¹ / ₄	14	4 ¹ / ₂	1 ¹ / ₂	30	5 ³ / ₄	³ / ₄
16 - 20	22 ¹ / ₄	17	5 ³ / ₈	1 ³ / ₄	35	6 ³ / ₄	1



TYPE B ARROW							
Upper Case Letter Size	Dimensions						
	A	B	C	D	E	F	R
6 - 8	15 ¹ / ₈	11 ⁹ / ₁₆	3 ³ / ₄	1 ⁵ / ₁₆	17	4 ¹ / ₂	1 ³ / ₁₆
10 - 13.33	18 ¹ / ₄	14	4 ¹ / ₂	1 ¹ / ₂	20	5 ¹ / ₄	³ / ₄
16 - 20	22 ¹ / ₄	17	5 ³ / ₈	1 ³ / ₄	25	6 ³ / ₈	1



VERTICAL DOWN ARROW						
Upper Case Letter Size	Dimensions					
	A	B	C	D	E	R
12	24	12	5	2 ¹ / ₄	16 ¹ / ₂	³ / ₄
13.33 - 16 - 20	32	16	6 ¹ / ₂	3	22	1

NOTES:

1. All dimensions are in inches.
2. Type A and B arrows are typically used on expressway and freeway guide signs. For guide signs on conventional roads, use Type D arrows on sheet 2.

NOT TO SCALE

DESIGN APPROVED	ARIZONA DEPARTMENT OF TRANSPORTATION INTERMODAL TRANSPORTATION DIVISION TRAFFIC SIGNING & MARKING STANDARD DRAWINGS	REVISION
SIGNATURES		6/14
APPROVED FOR DISTRIBUTION	TYPE A, B, AND DOWN ARROWS	DRAWING NO.
ON FILE		S-12
		SHEET NO.
		1 of 3