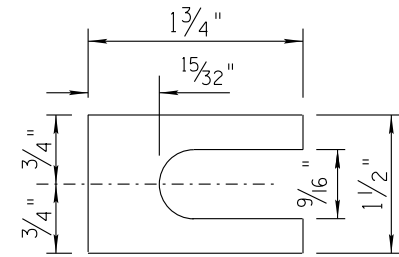
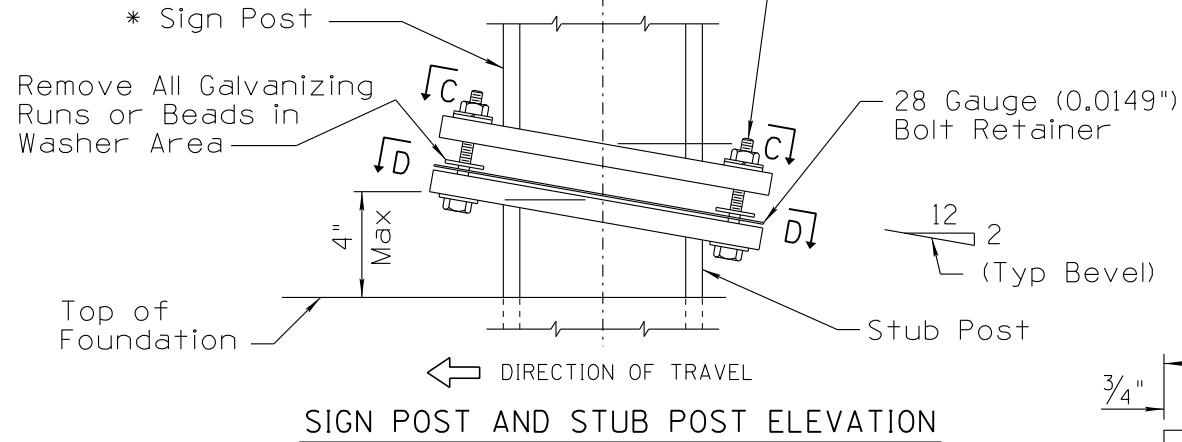


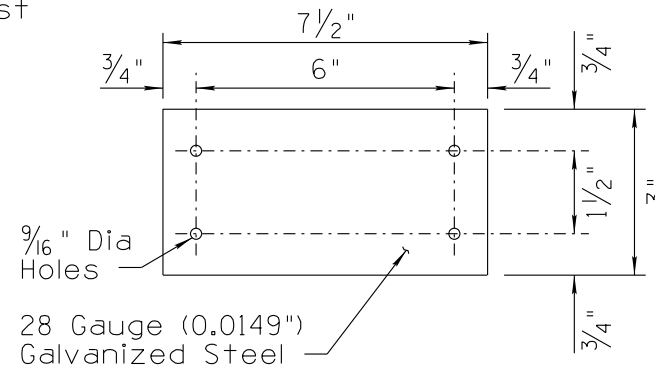
\* See Project Plans for post length

1/2" Dia x 2 1/2" HS ASTM F1554 Grade A325 Galvanized Hex Head Bolt, with Hex Nut and 3 Flat Washers with each Bolt. See Std Dwg S-5 for Procedure For Bolting And Assembly Of Base Connection

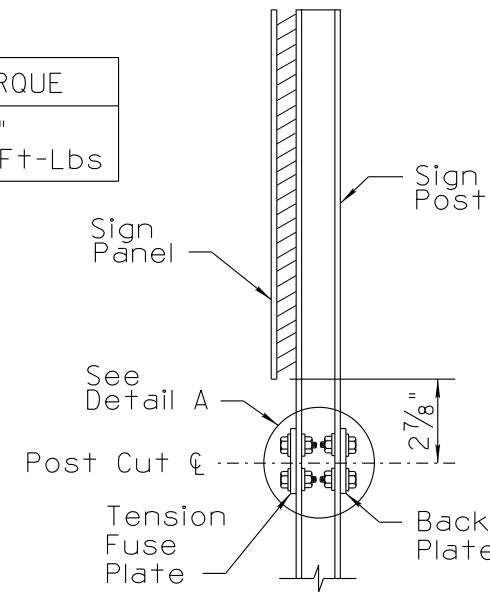


Furnish 2 Each 0.012"± Thick and 2 Each 0.032"± Thick Shims per Post. Shims Shall be Fabricated From Brass Shim Stock or Strip Conforming to the Requirements of ASTM B36. Four Shims per Bolt Maximum.

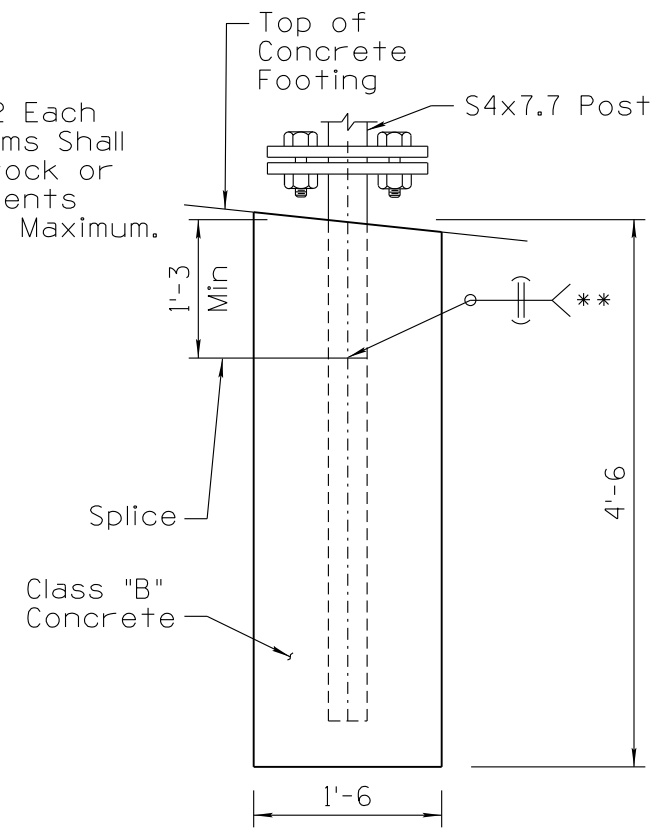
POST SIZE	BOLT SIZE AND TORQUE
S4x7.7	1/2" Dia x 2 1/2" Torque = 10 to 14 Ft-Lbs



BOLT RETAINER



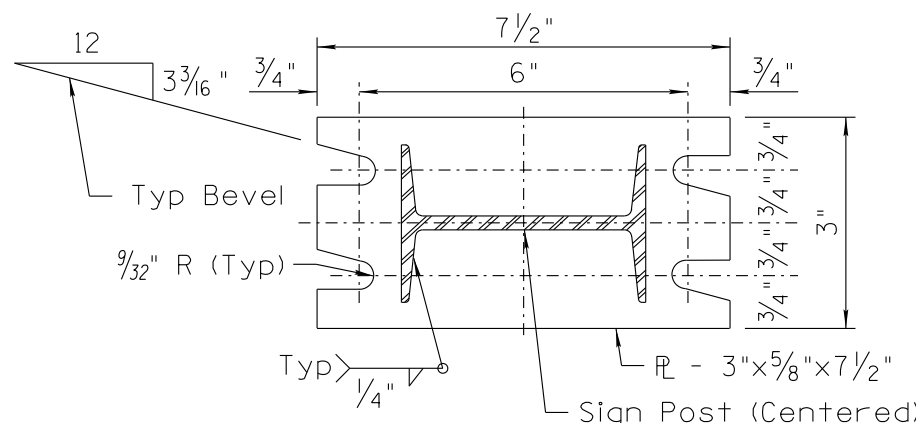
SIDE VIEW OF POST



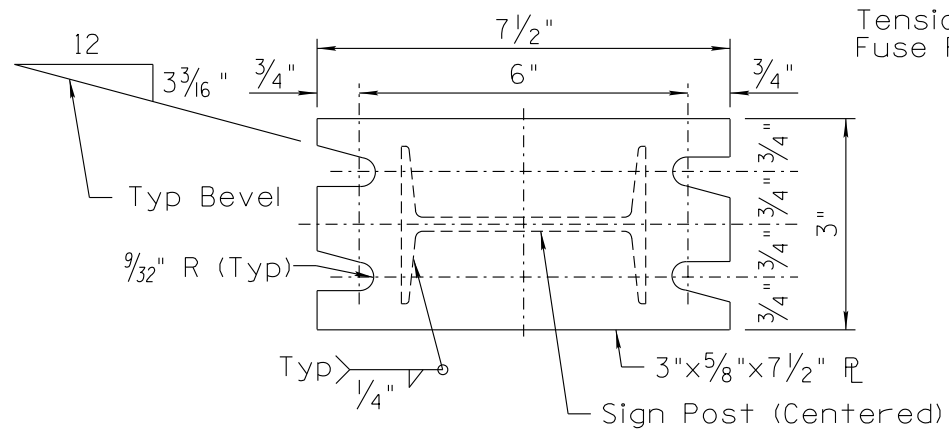
PERMISSIBLE SHOP SPLICE

All shop splices shall be approved by the Engineer.

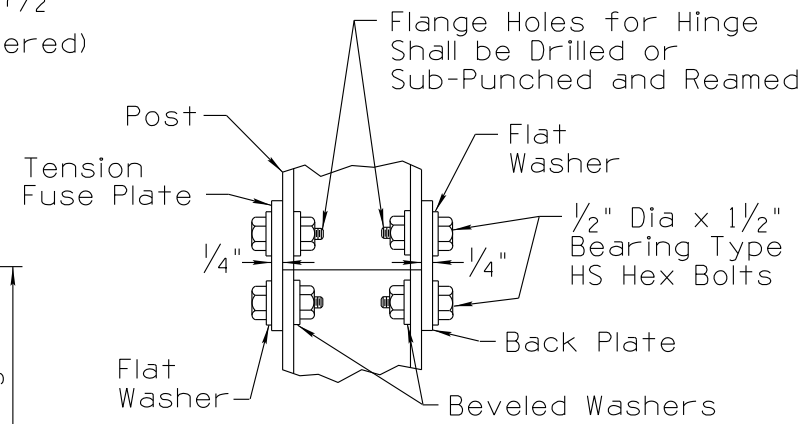
\*\* All welding shall be in accordance with AWS-1.1 latest edition.



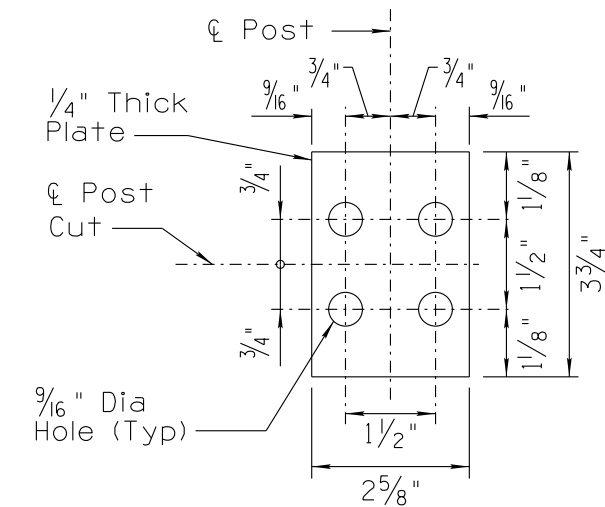
SECTION C-C



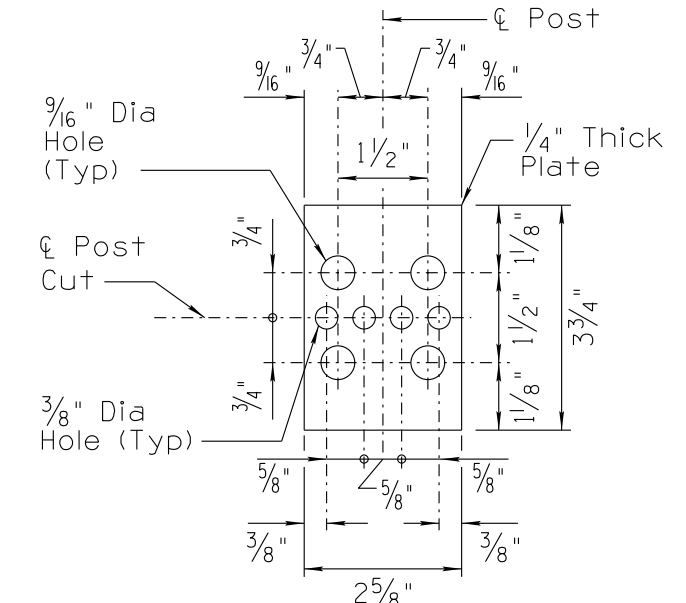
SECTION D-D



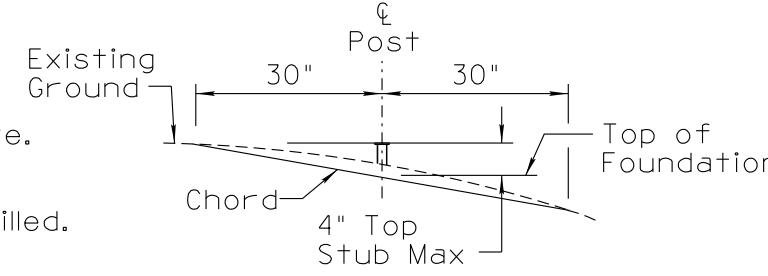
DETAIL A HINGE



BACK PLATE



TENSION FUSE PLATE



STUB PROJECTION LIMITS

NOTES:

- Sections shown are for installations on right shoulder and in gore. For installations on left shoulder, plate slot bevels are reversed.
- All plates shall be ASTM A572 grade 50 and all plate holes shall be drilled.
- All plate cuts shall preferably be saw cuts; flame cutting will be permitted provided all edges are ground.

Note to Designer: The information presented in this Standard Drawing has been prepared in accordance with recognized engineering principles and is for general use. It should not be used for specific application without competent professional examination and verification of its suitability and applicability by a licensed professional engineer. Comments within the inner border line shall not be altered.

PRIOR DISTRIBUTION DATE 06/14

STANDARDS ENGINEER  
A. ALZUBI  
RECOMMENDED FOR APPROVAL  
GROUP MANAGER  
M. HANNA  
APPROVED  
STANDARDS COMMITTEE APPROVED FOR DISTRIBUTION 06/2022 DATE

ARIZONA DEPARTMENT OF TRANSPORTATION  
INFRASTRUCTURE DELIVERY AND OPERATIONS DIVISION  
TRAFFIC SIGNING & MARKING  
STANDARD DRAWING  
DRAWING NO. S-6  
1 of 1  
BREAKAWAY S4x7.7  
POST DETAILS