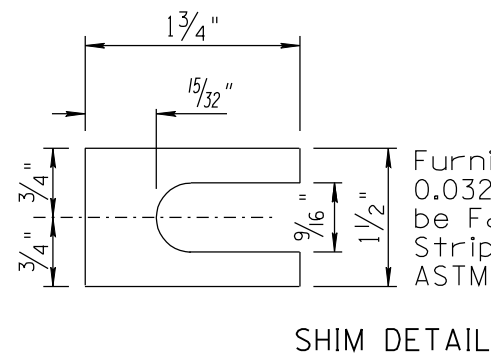
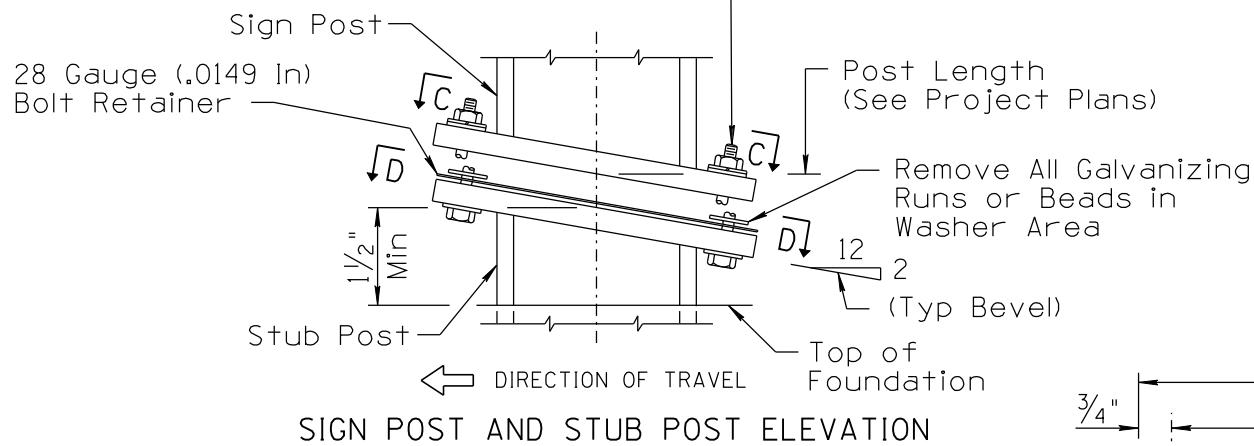
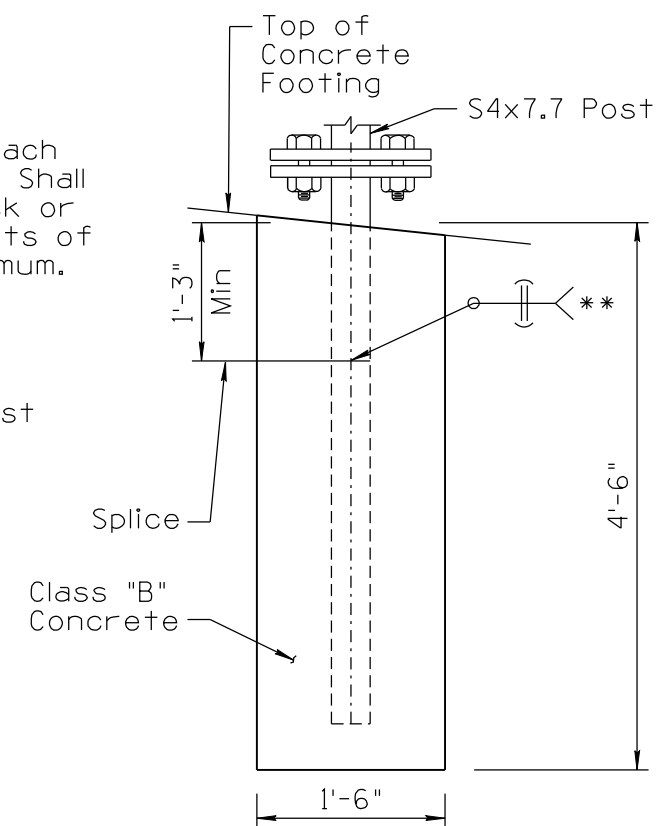
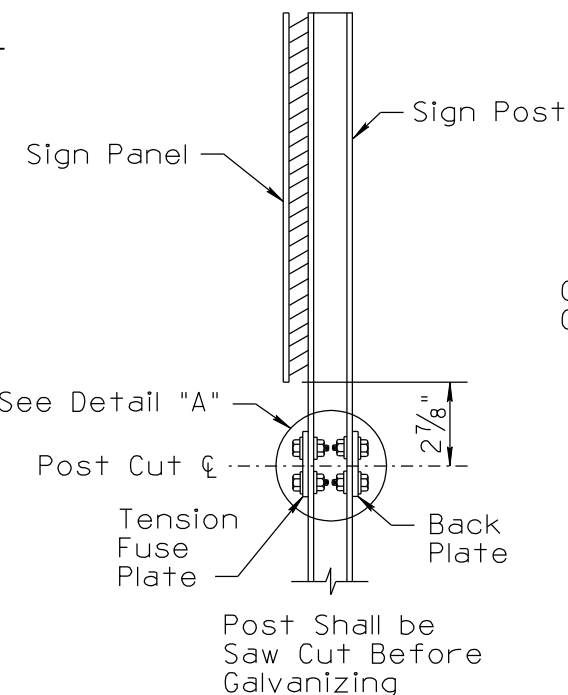


NO	DESCRIPTION OF REVISIONS	DATE	MADE BY
1	RE-ISSUE	2/02	L. LOPEZ
2	REVISED AND RE-ISSUED. ADDED NEW BORDER.	10/10	PARSONS BRINCKERHOFF
3	REVISED SIGN POST AND STUB POST ELEVATION CALLOUTS. REVISED TENSION FUSE PLATE.	8/11	L. LOPEZ
4	REVISED DRAWING, CHANGE TEXT CASE.	6/14	L. LOPEZ

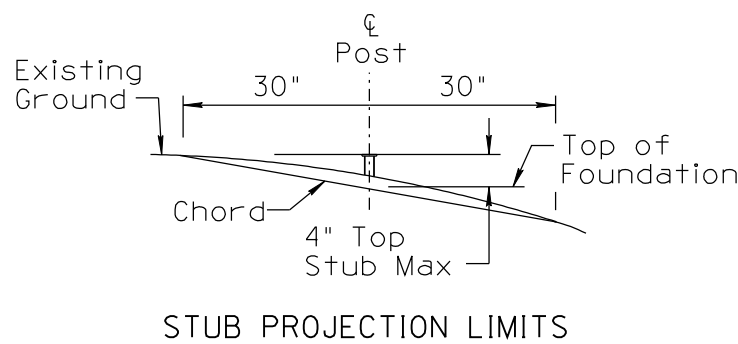
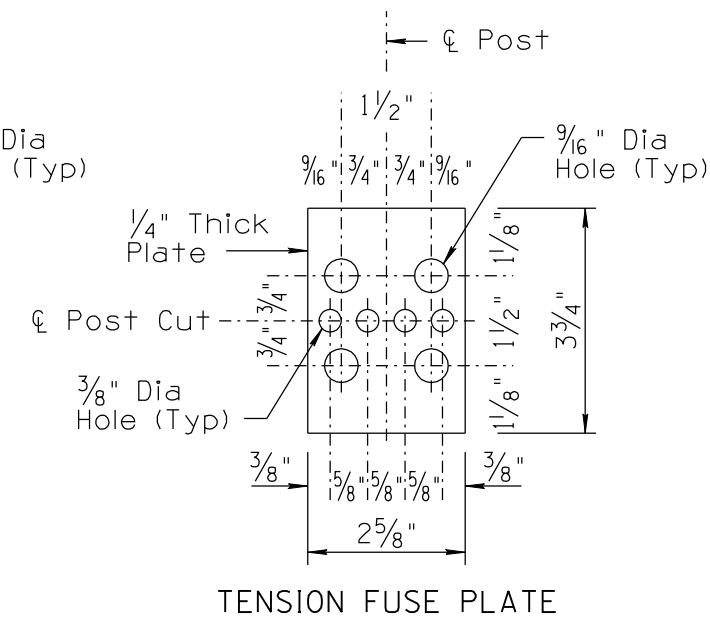
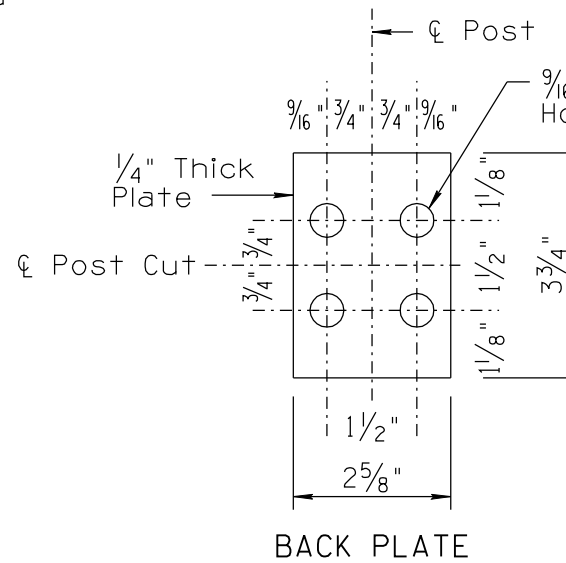
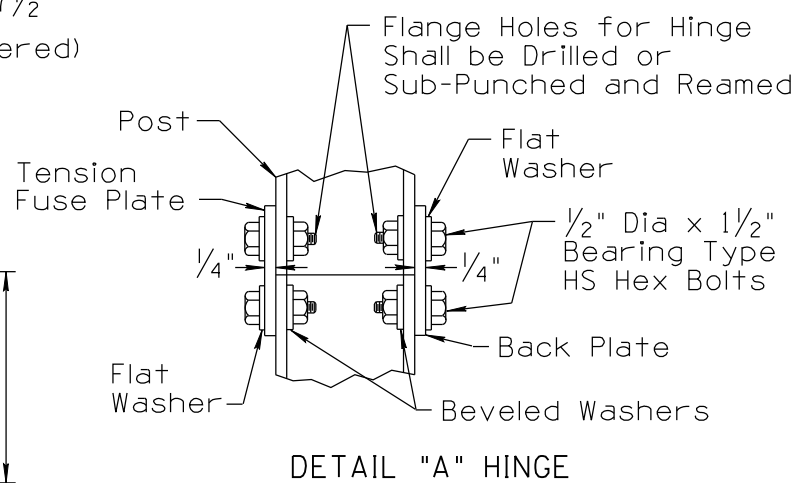
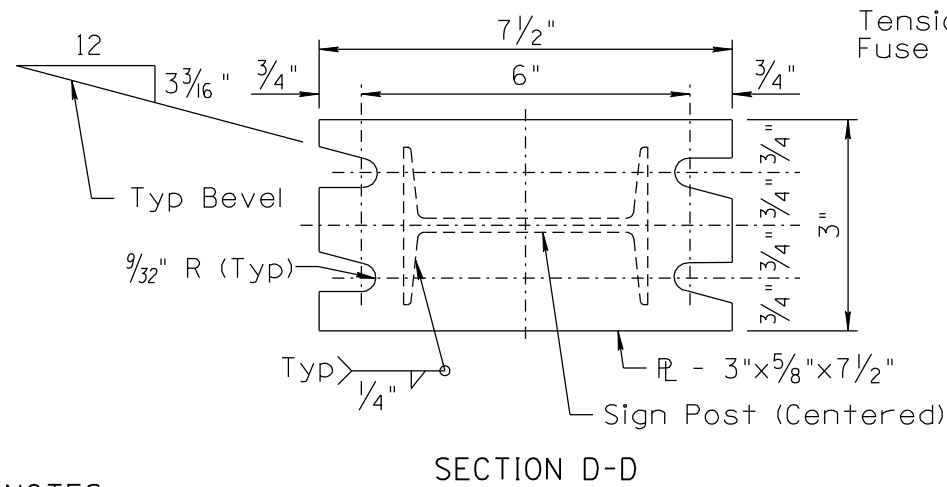
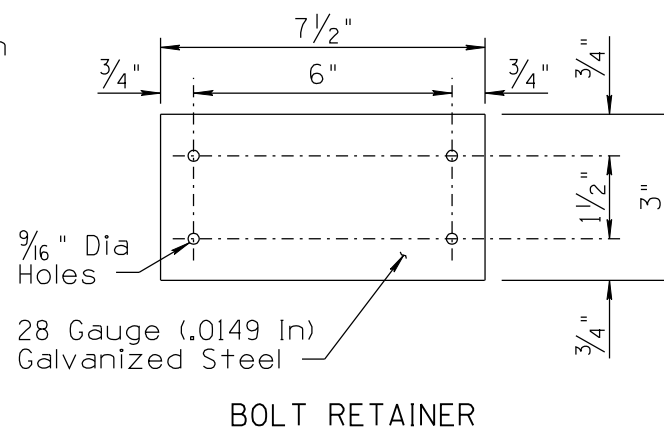
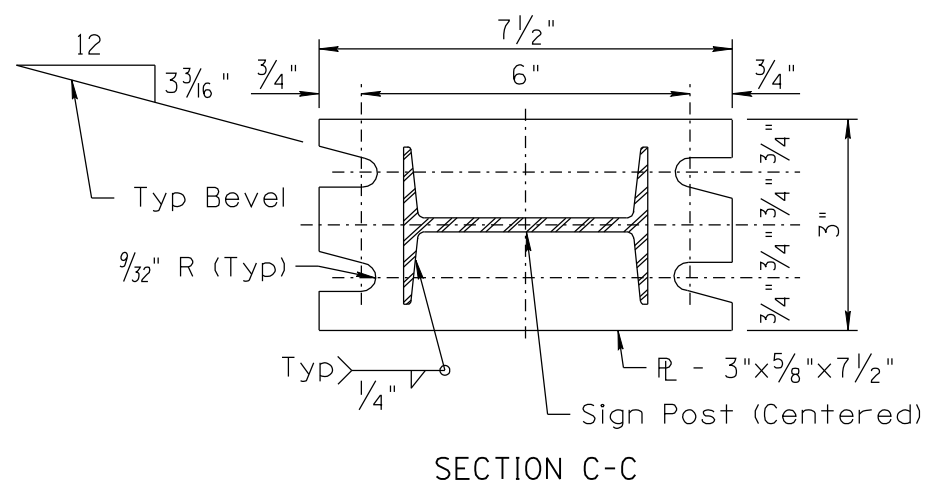
1/2" Dia x 2 1/2" HS ASTM A325 Galvanized Hex Head Bolt, with Hex Nut and 3 Flat Washers with each Bolt. For Bolting Procedures See Std Dwg S-5. Torque Bolts 7 to 11 Ft-Lbs. Do Not Deform Bolt Threads After Torquing.



Furnish 2 Each 0.012"± Thick and 2 Each 0.032"± Thick Shims per Post. Shims Shall be Fabricated From Brass Shim Stock or Strip Conforming to the Requirements of ASTM B36. Four Shims per Bolt Maximum.



All shop splices shall be approved by the Engineer. All welding shall be in accordance with AWS-L.I latest edition.



NOTES:

- Sections shown are for installations on right shoulder and in gore. For installations on left shoulder, plate slot bevels are reversed.
- All plates shall be ASTM A572 grade 50. All plate holes shall be drilled. All plate cuts shall preferably be saw cuts; flame cutting will be permitted provided all edges are ground.

NOT TO SCALE

DESIGN APPROVED	ARIZONA DEPARTMENT OF TRANSPORTATION INTERMODAL TRANSPORTATION DIVISION TRAFFIC SIGNING & MARKING STANDARD DRAWINGS	REVISION 6/14
SIGNATURES		DRAWING NO. S-6
APPROVED FOR DISTRIBUTION	BREAKAWAY S4x7.7 POST DETAILS	SHEET NO. 1 OF 1
ON FILE		