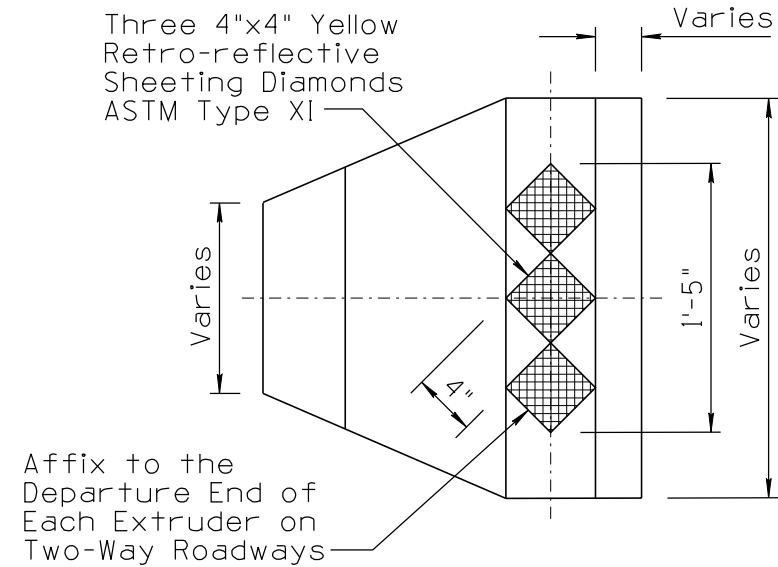
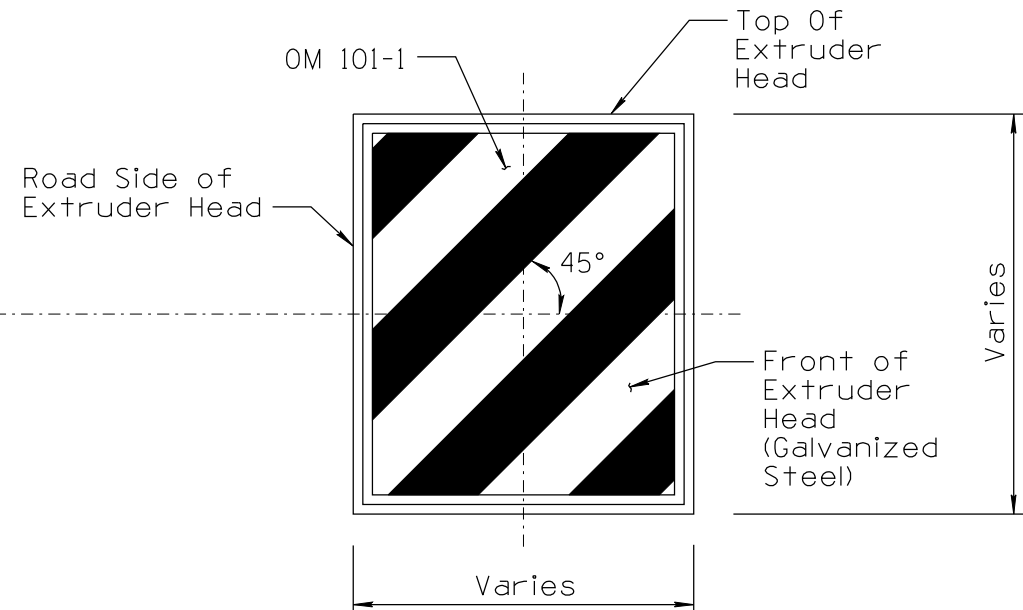


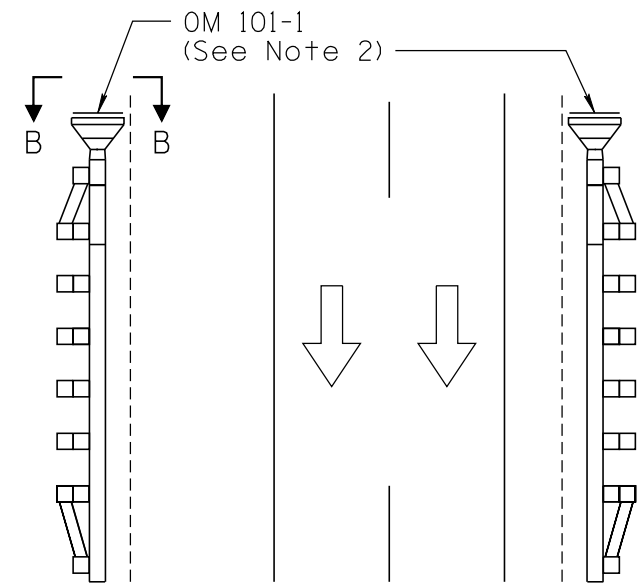
NO	DESCRIPTION OF REVISIONS	MADE BY	DATE
1	ADDED NOTE #3, TEXT EDITS	L. LOPEZ	5/03
2	ADDED NOTE #4.	L. LOPEZ	2/04
3	TYPO CORRECTION NOTE #3	L. LOPEZ	4/05
4	REVISED DRAWING AND NOTES, CHANGED TEXT CASE, UPDATED BORDER.	L. LOPEZ	6/14



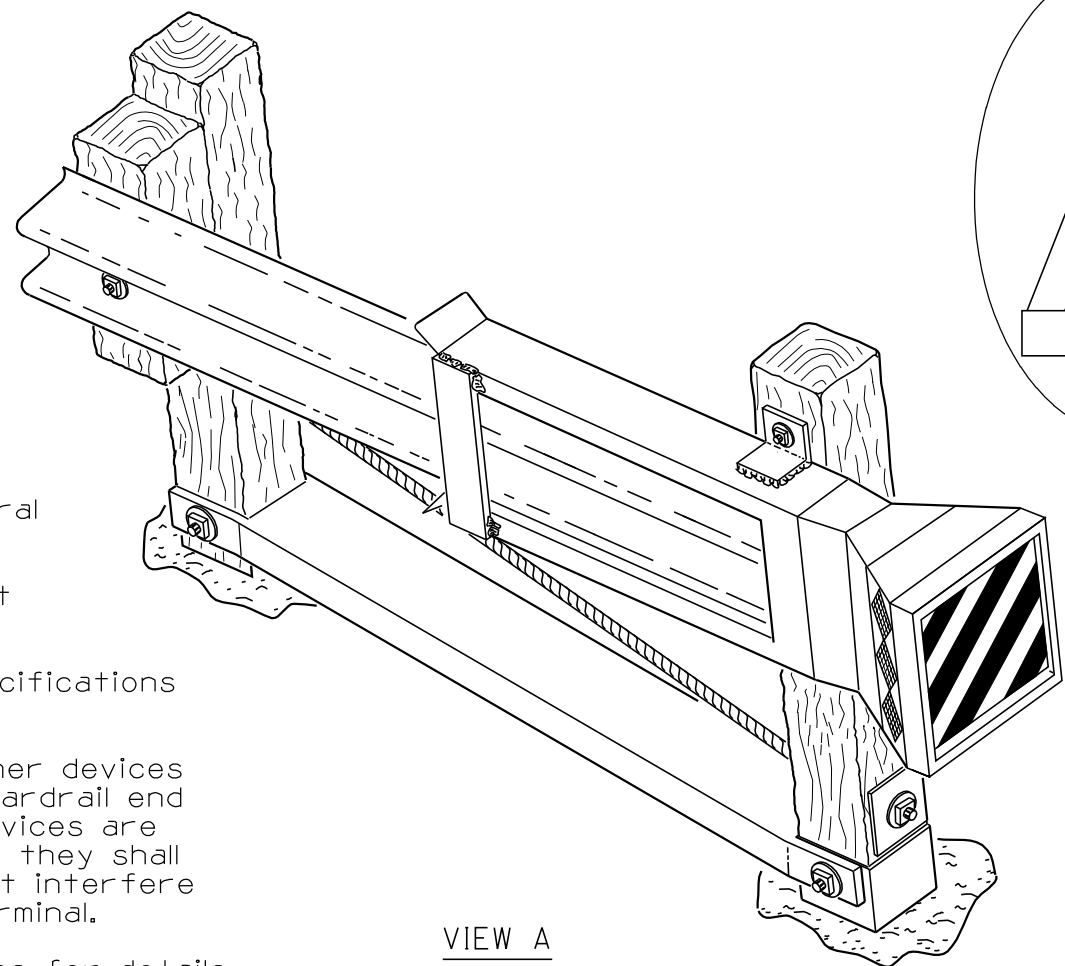
SECTION A-A
Delineation for the Side of the Guardrail End Terminal



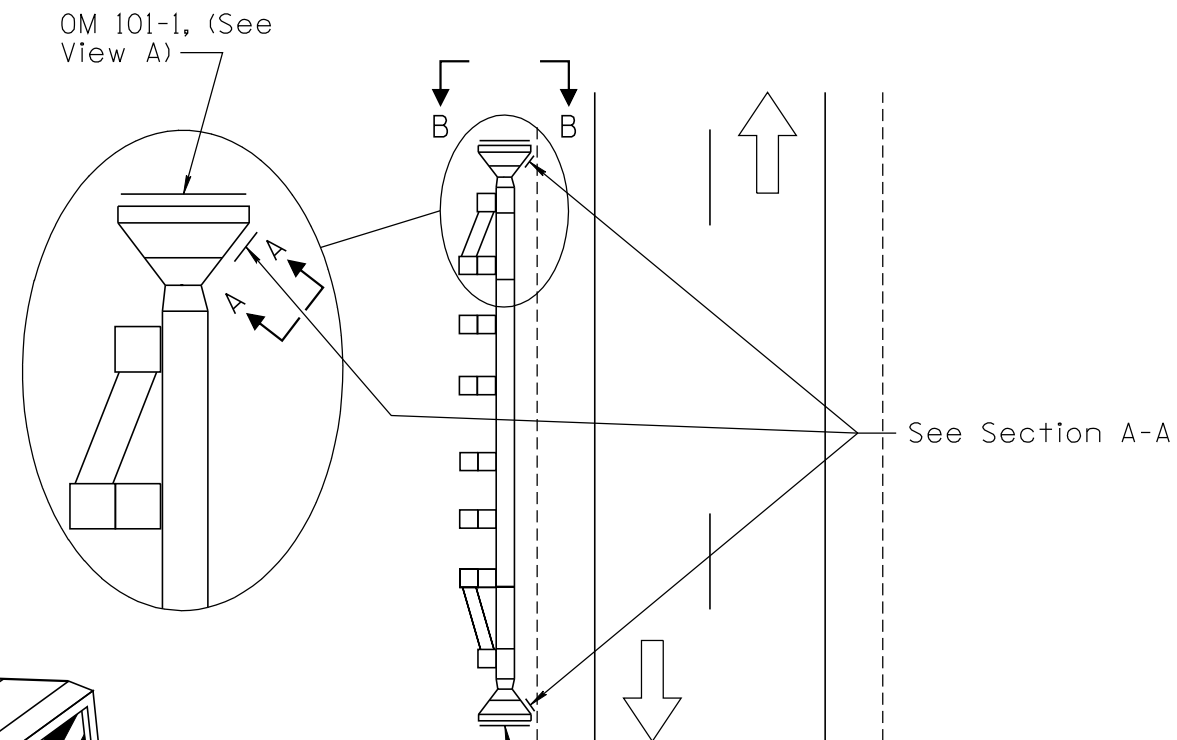
SECTION B-B
FACING TRAFFIC
Delineation for the Head of the Guardrail End Terminal



ONE-WAY ROADWAY



VIEW A



TWO-WAY ROADWAY

APPLICATION DETAIL FOR GUARDRAIL END TERMINAL

NOTES:

1. These details are applicable for several manufacturers' specifications.
2. The stripes on the OM 101-1 shall point down and toward the roadway.
3. See section 905 of the Standard Specifications for guardrail marking requirements.
4. Delineators, snow markers or any other devices should not be installed on or near guardrail end terminals or their posts. If these devices are installed adjacent to an end terminal, they shall be installed in a manner that shall not interfere with the functionality of the end terminal.
5. See the ADOT Manual of Approved Signs for details of the OM 101-1.

NOT TO SCALE

DESIGN APPROVED	ARIZONA DEPARTMENT OF TRANSPORTATION INTERMODAL TRANSPORTATION DIVISION TRAFFIC SIGNING & MARKING STANDARD DRAWINGS	REVISION 6/14
SIGNATURES		DRAWING NO. M-34
APPROVED FOR DISTRIBUTION	ON FILE	SHEET NO. 1 of 1