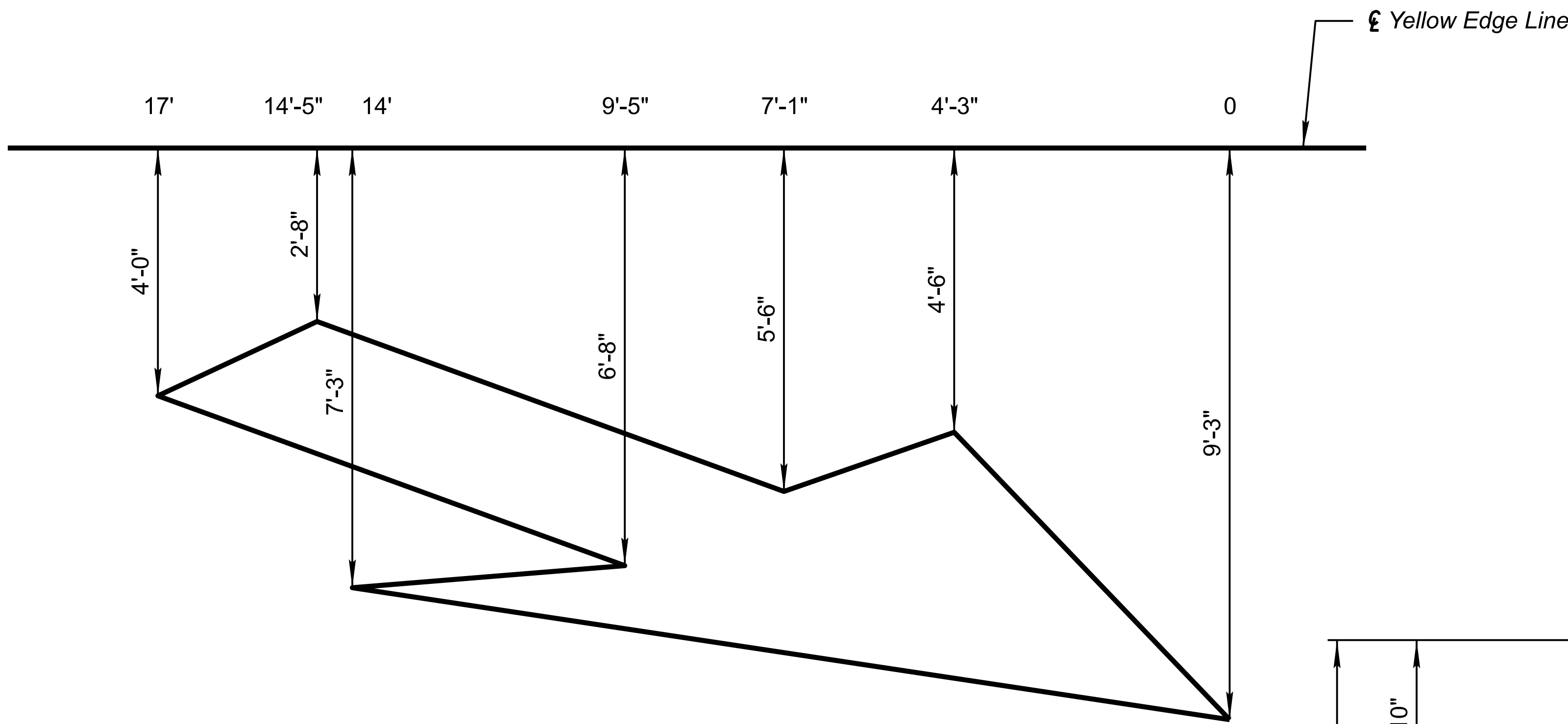
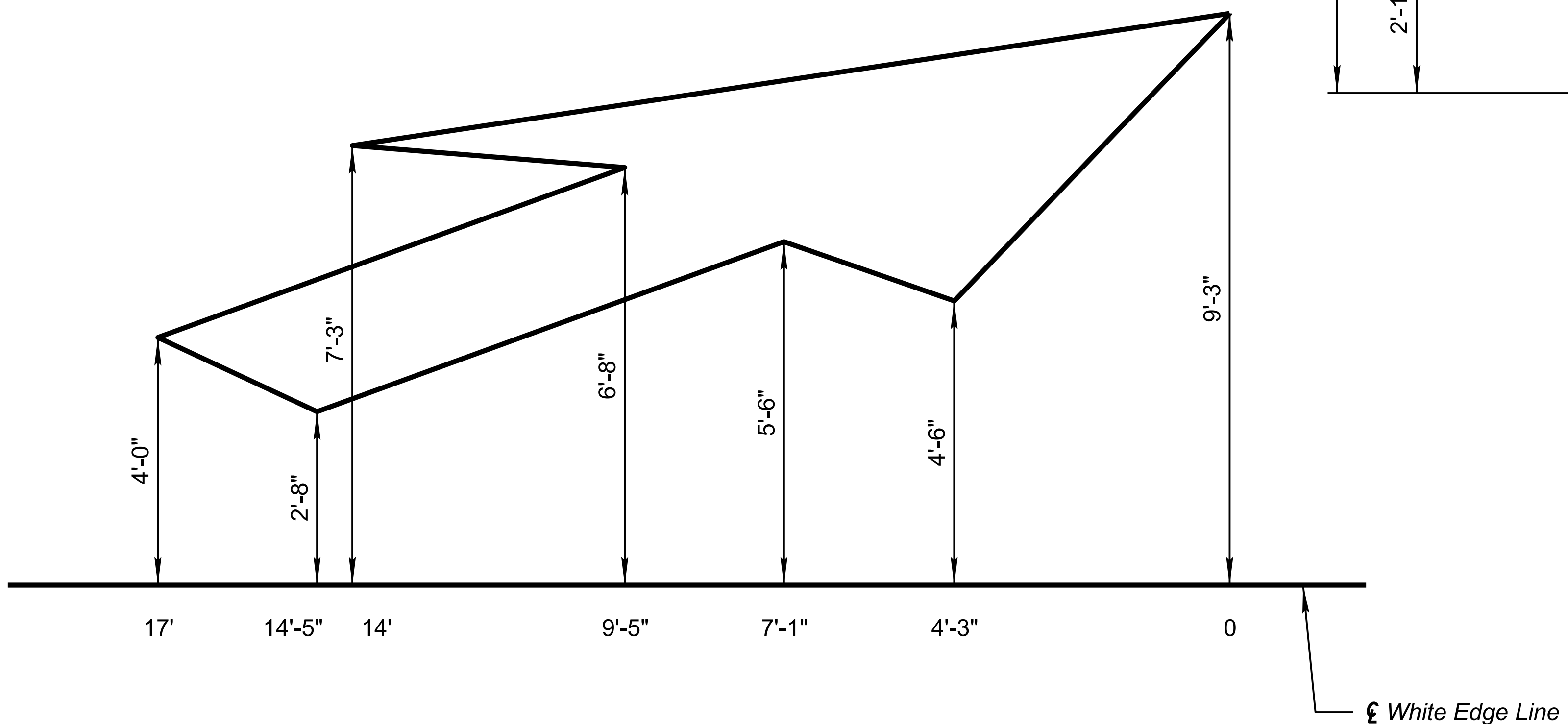


Note to Designer:
 The information presented in this Standard Drawing has been prepared in accordance with recognized engineering principles and is for general use. It should not be used for specific application without competent professional examination and verification of its suitability and applicability by a licensed professional engineer. Contents within the inner border line shall not be altered.

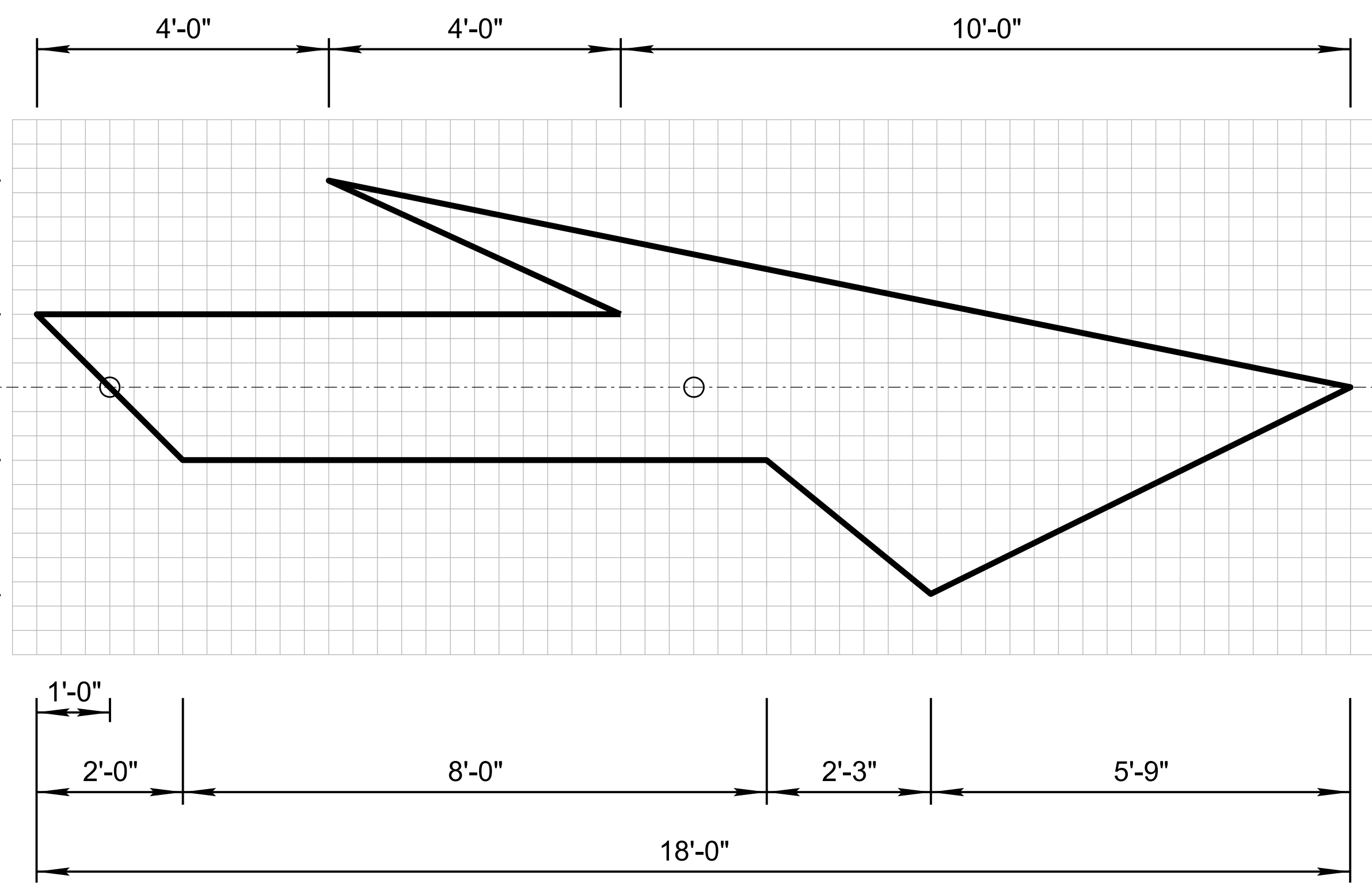
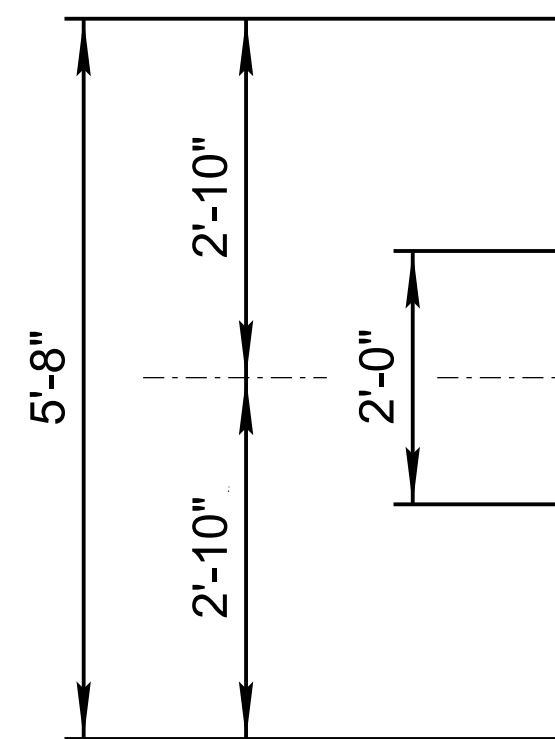
PRIOR DISTRIBUTION D-T-E 09/2008



MERGING LEFT TO RIGHT



MERGING RIGHT TO LEFT



ARROW DETAILS

1 Unit = 4"
White Marking

ST-NO-RDS ENGINEER R. MOEUR	-RIZON- DEPARTMENT OF TRANSPORTATION INFRA-STRUCTURE DELIVERY AND OPERATIONS DIVISION TRAFFIC SIGNING AND MARKING STANDARD DRAWINGS
RECOMMENDED FOR APPROVAL GROUP MANAGER M. HANN-	
APPROVED ST-NO-RDS COMMITTEE APPROVED FOR DISTRIBUTION 06/2014 D-T-E	P-VEMENT MARKING SYMBOLS

DR-WING NO. M-10
Sheet 2 of 3