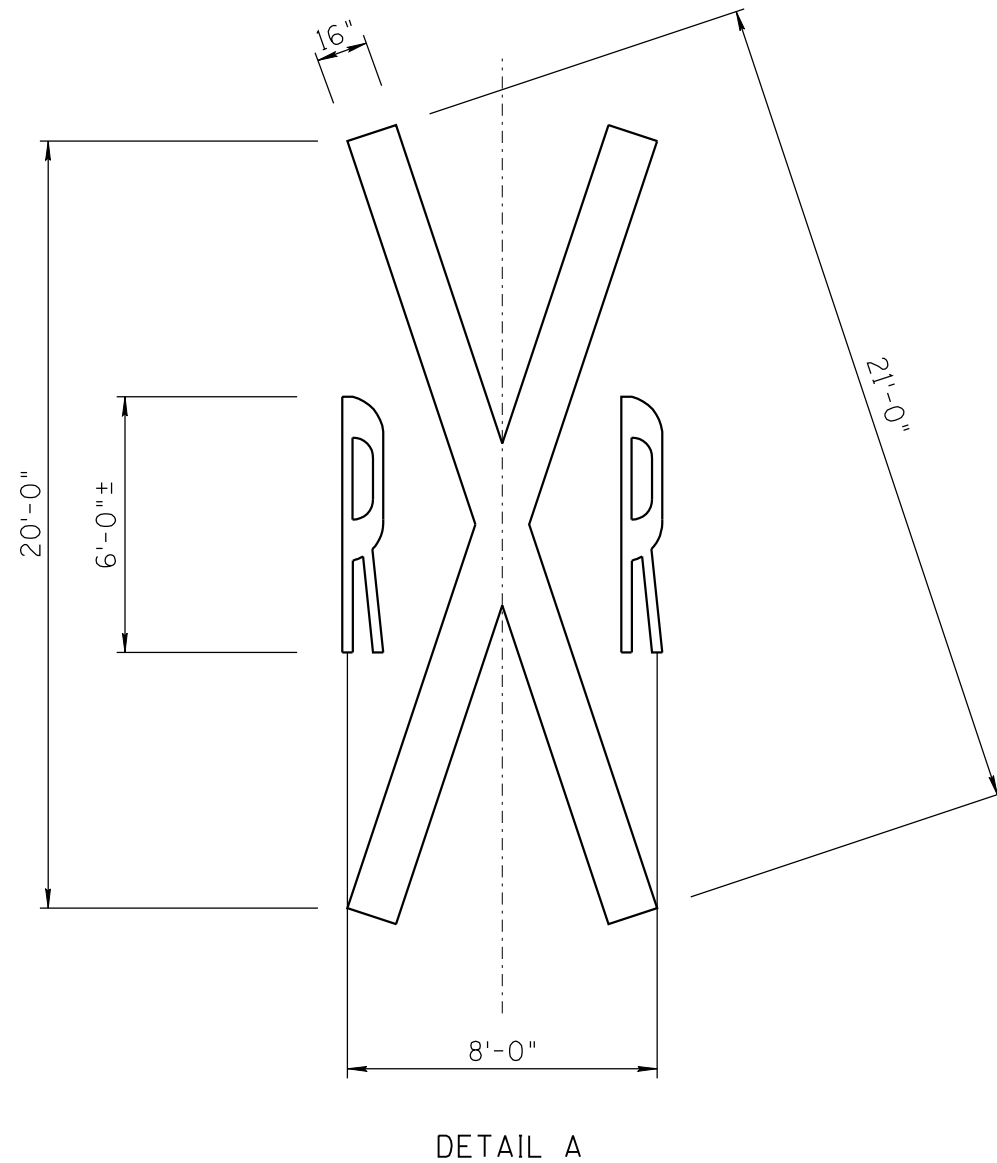
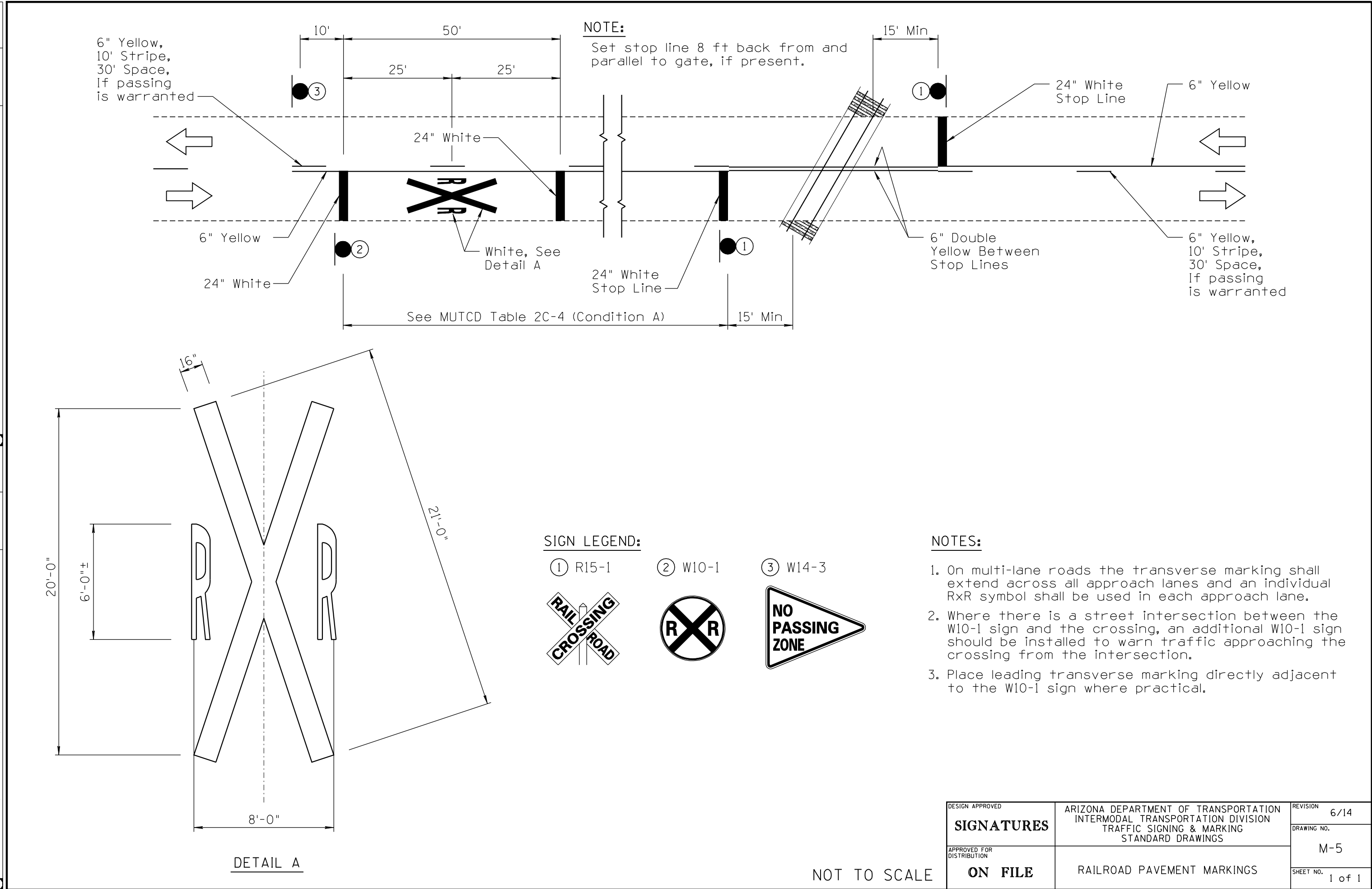





NO	DESCRIPTION OF REVISIONS	MADE BY	DATE	NO
1	RE-ISSUE	L. LOPEZ	2/02	3
2	CHANGED TEXT CASE, UPDATED BORDER, REVISED CALLOUTS AND NOTES.	L. LOPEZ	6/14	4



**SIGN LEGEND:**

- ① R15-1 
- ② W10-1 
- ③ W14-3 

**NOTES:**

1. On multi-lane roads the transverse marking shall extend across all approach lanes and an individual RxR symbol shall be used in each approach lane.
2. Where there is a street intersection between the W10-1 sign and the crossing, an additional W10-1 sign should be installed to warn traffic approaching the crossing from the intersection.
3. Place leading transverse marking directly adjacent to the W10-1 sign where practical.

DESIGN APPROVED	ARIZONA DEPARTMENT OF TRANSPORTATION INTERMODAL TRANSPORTATION DIVISION TRAFFIC SIGNING & MARKING STANDARD DRAWINGS	REVISION	6/14
<b>SIGNATURES</b>		DRAWING NO.	M-5
APPROVED FOR DISTRIBUTION	RAILROAD PAVEMENT MARKINGS	SHEET NO.	1 of 1
<b>ON FILE</b>			

NOT TO SCALE