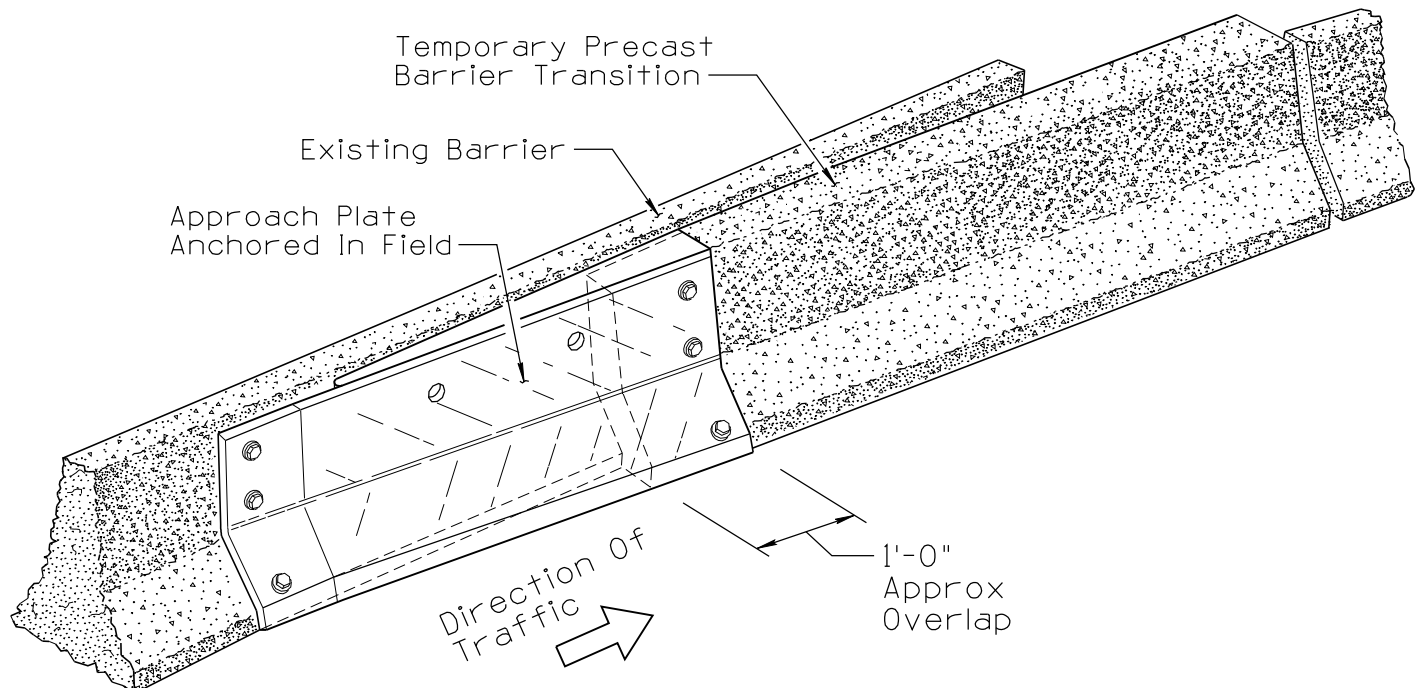
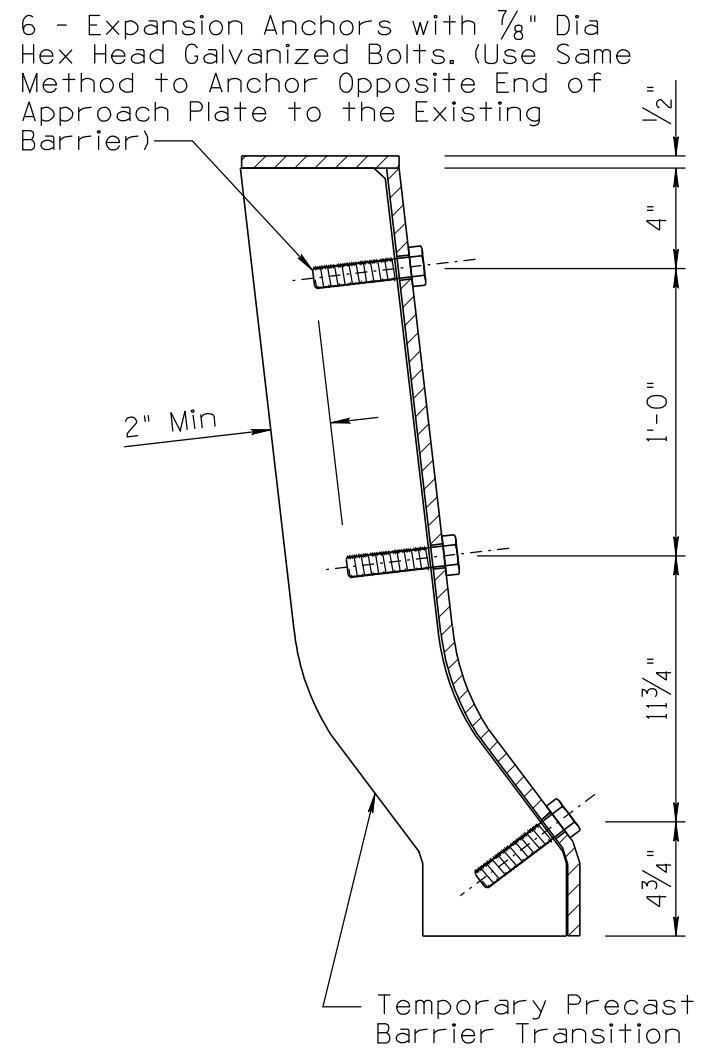
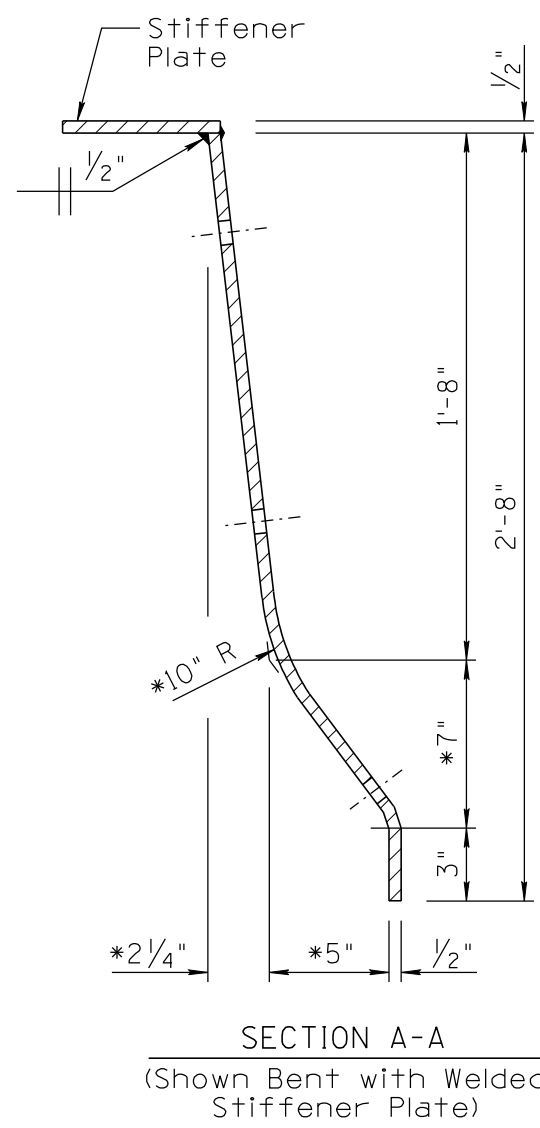
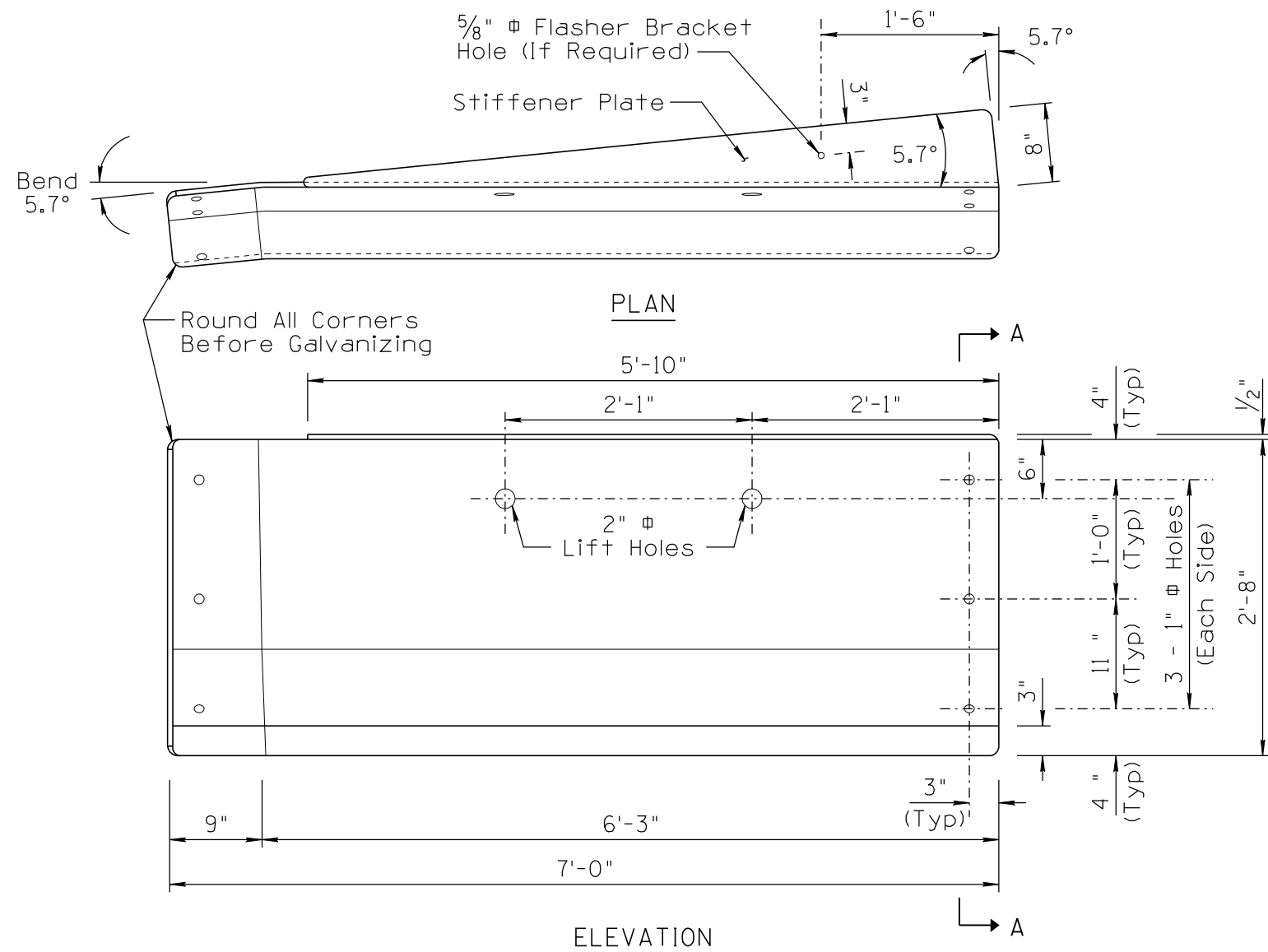


NO	DESCRIPTION OF REVISIONS	DATE	MADE BY
1	NEW ISSUE	10/02	L. LOPEZ
2	CHANGED TEXT CASE, UPDATED BORDER	6/14	L. LOPEZ



NOTES:

1. The approach plate shall be 1/2" thick steel fabricated to configuration shown.
2. Structural steel shall be ASTM A123 and galvanized after bending or welding.
3. See Std Dwg C-5, sheet 1 of 2 for details of precast temporary concrete traffic barrier transition left side approach.
4. When the approach plate is removed the holes in existing barrier shall be grouted.
- *5. Dimensions are to the intersection point of the plate slopes. Construct the 10 inch radius to provide a smooth transition between the slopes.

NOT TO SCALE

DESIGN APPROVED	ARIZONA DEPARTMENT OF TRANSPORTATION INTERMODAL TRANSPORTATION DIVISION TRAFFIC SIGNING & MARKING STANDARD DRAWINGS	REVISION 6/14
SIGNATURES		DRAWING NO. C-5
APPROVED FOR DISTRIBUTION	APPROACH PLATE AND TRANSITION SECTION FOR TEMPORARY CONCRETE BARRIER	SHEET NO. 2 of 2
ON FILE		