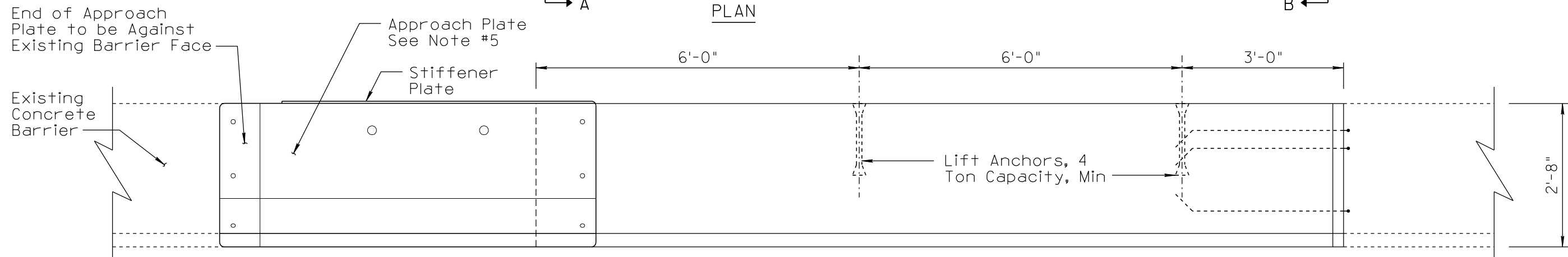
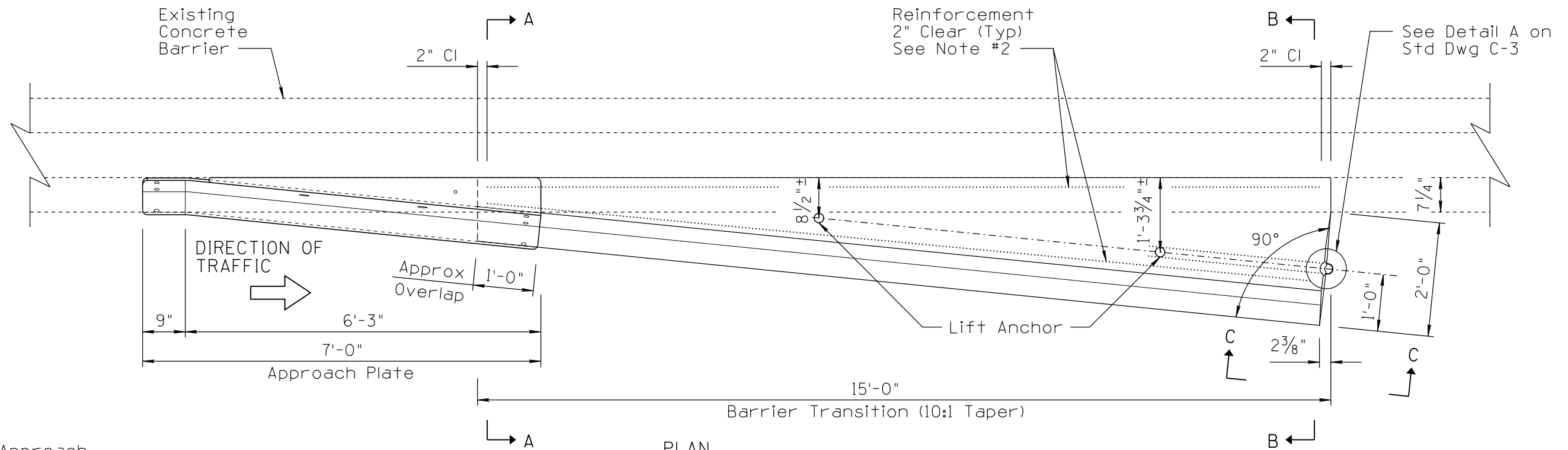
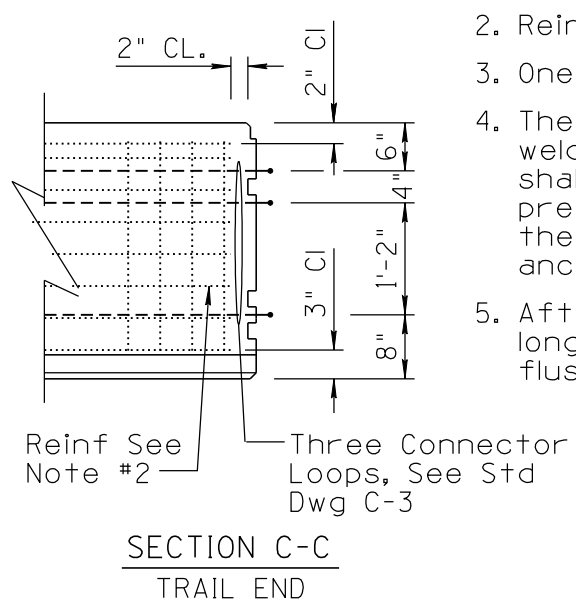
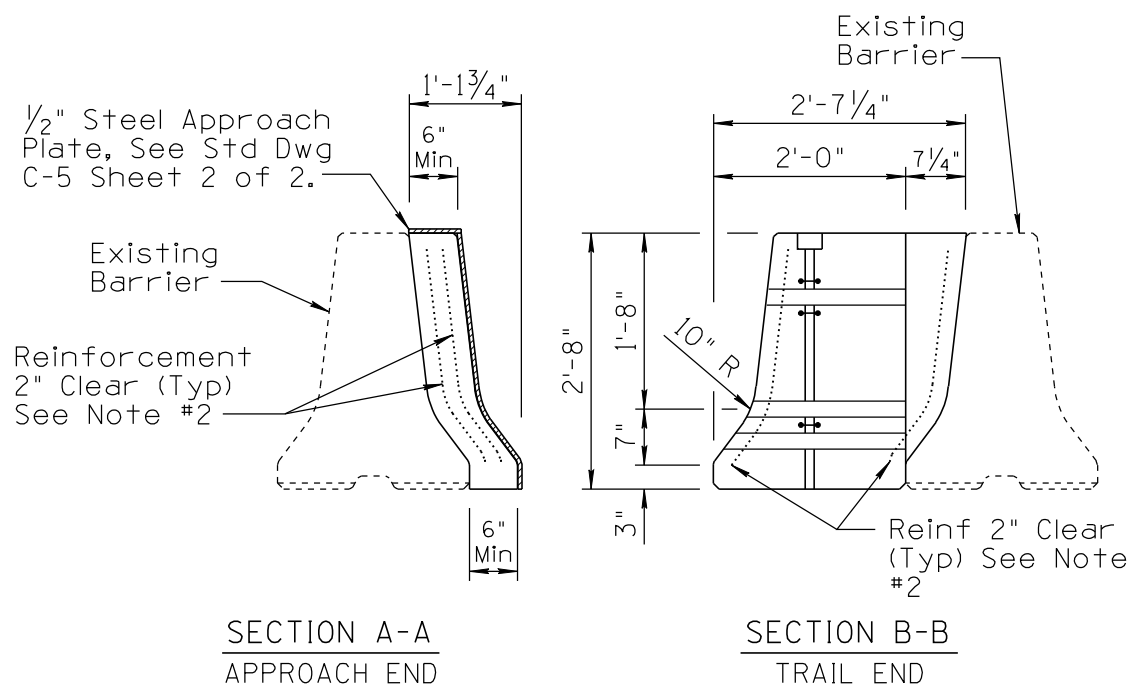


NO	DESCRIPTION OF REVISIONS	DATE	MADE BY
1	NEW ISSUE	10/02	L. LOPEZ
2	CHANGED TEXT CASE, UPDATED BORDER, CORRECTED SPELLING ERROR IN NOTES.	6/14	L. LOPEZ
3			
4			



**NOTES:**

1. Concrete shall have 28 day design strength of  $f'c=4000$  psi.
2. Reinf. shall be plain or epoxy coated 4"x4" - W4.0 x W4.0 welded wire fabric.
3. One connector pin shall be furnished with each barrier. See Std Dwg C-3.
4. The approach plate shall be fabricated using 1/2" thick steel plate bent and welded to the configuration shown on Std Dwg C-5 sheet 2 of 2. The plate shall be galvanized after fabrication. The plate shall be anchored to the precast temp. barrier transition and to the existing concrete barrier in the field to achieve proper placement and hole alignment with 6 expansion anchors and 7/8" diameter hex head bolts.
5. After the temporary concrete barrier transition section and plate are no longer required and are removed, the anchor bolts shall be removed or cut flush with the face of the concrete barrier. Grout any resulting holes.



NOT TO SCALE

DESIGN APPROVED	ARIZONA DEPARTMENT OF TRANSPORTATION INTERMODAL TRANSPORTATION DIVISION TRAFFIC SIGNING & MARKING STANDARD DRAWINGS	REVISION 6/14
<b>SIGNATURES</b>		DRAWING NO. C-5
APPROVED FOR DISTRIBUTION	ON FILE	SHEET NO. 1 of 2