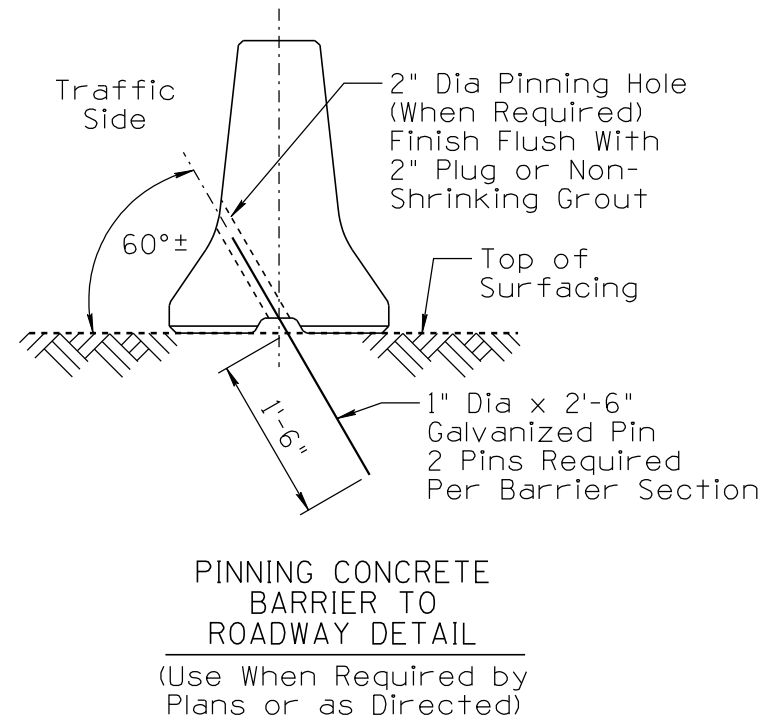
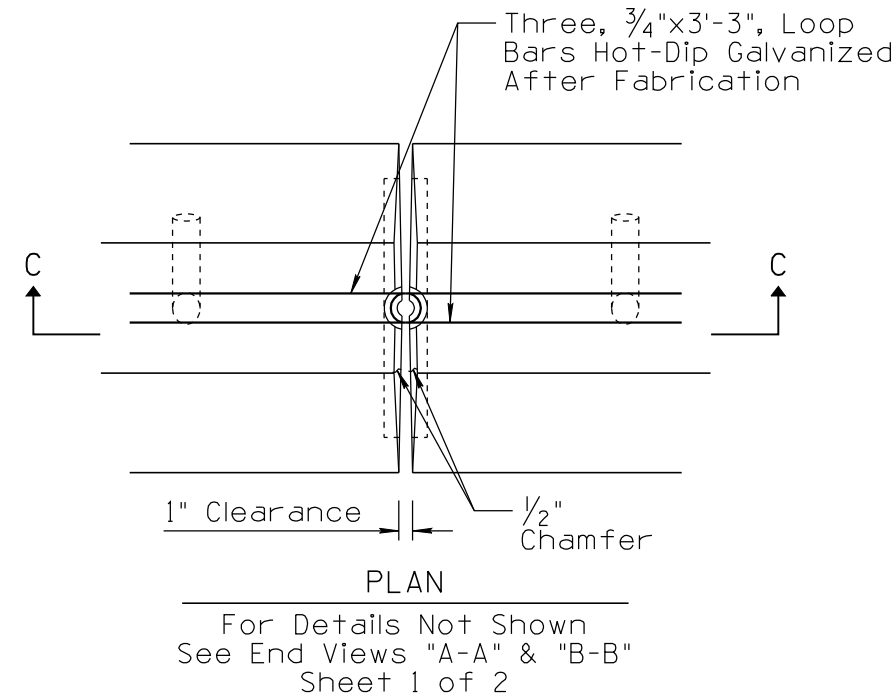


NO	DESCRIPTION OF REVISIONS	DATE	MADE BY
1	RE-ISSUE	2/02	L. LOPEZ
2	EDIT NOTES	5/03	L. LOPEZ
3	DELETED NOTE #1; EDITED PIN DETAILS, DELETED SHEET #3.		
4	REVISED NOTES, CHANGED TEXT CASE, UPDATED BORDER.		

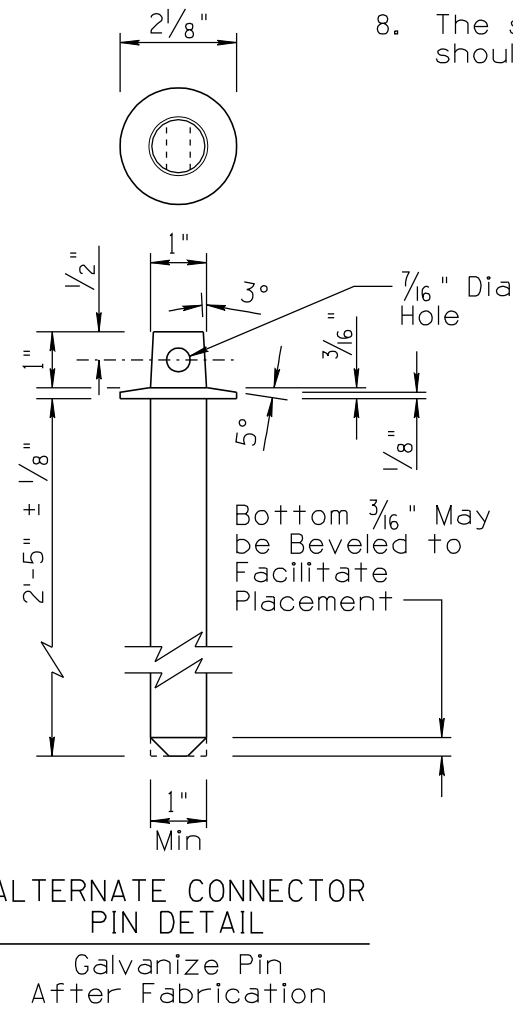
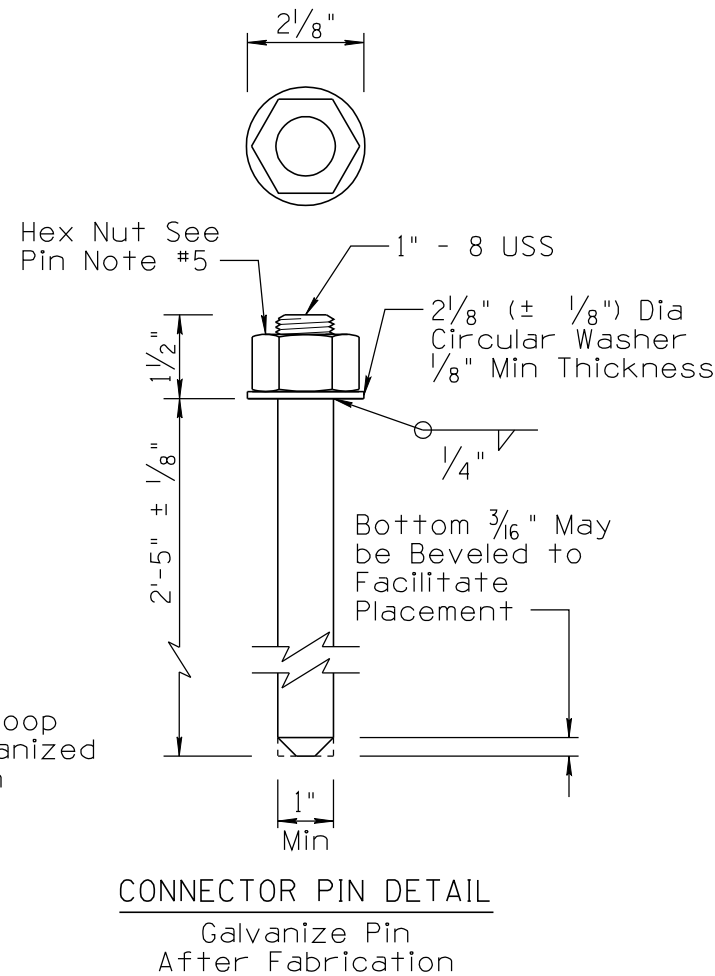
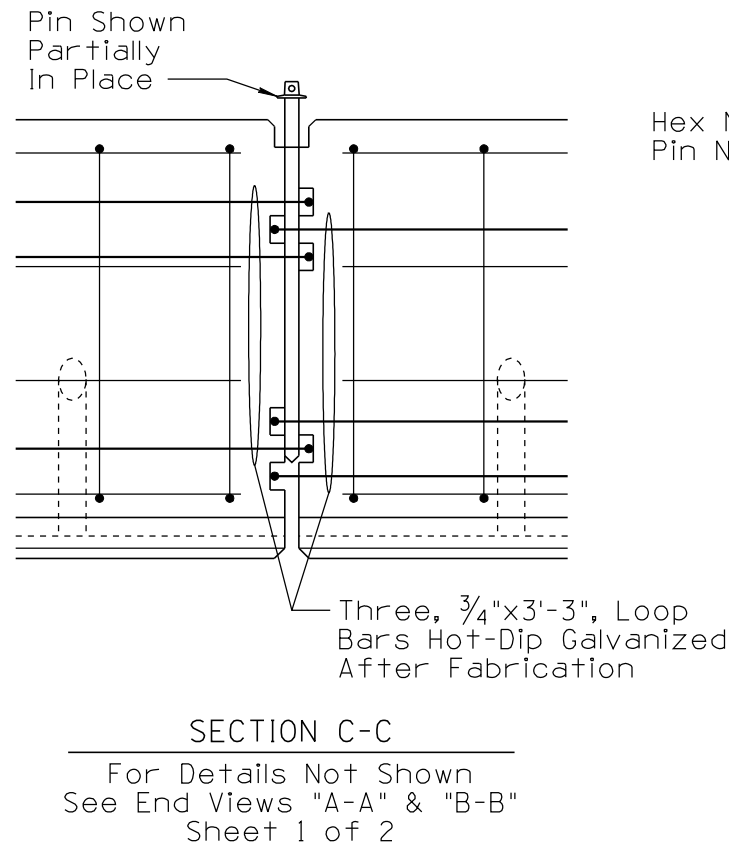


GENERAL NOTES:

1. Temporary concrete barrier shall be precast concrete barrier with pin and loop assembly. Conforming to these drawings, the Standard Specifications or Project Special Provisions.
2. All metal reinforcing shall be 2 inches clear of nearest face of concrete unless otherwise shown.
3. Install type BM-1, BM-2 or BM-3 barrier markers at 20 ft spacing. See Std Dwgs M-32 & M-33.
4. Normal use of precast barrier units is restricted to curvatures with radii greater than 771 feet.
5. Maximum chord length for curves with a 1427 ft radius or less, shall be 12'-6". Maximum chord length for curves with radii exceeding 1427 feet, shall be 25 feet.
6. When scuppers are not required, plug them with 2 inches of grout, minimum.
7. Concrete grouting of scuppers shall be non-shrinking, weak in strength and of thick consistency.
8. The surface upon which the temporary barrier is placed should have no greater than 10:1 slope in any direction.

PIN NOTES:

1. Washers shall be forged as an integral part of the pin, or shall be welded as shown.
2. Pins shall be galvanized after fabrication according to ASTM A153.
3. Pins that conform to critical dimensions, (pin length & dia, washer dia & thickness), are acceptable if an approved top configuration for lifting the pin is provided.
4. Pins, nuts and washers shall conform to ASTM A449.
5. To facilitate pin removal, thread hex nut halfway onto the pin and tack weld or provide a coupling nut, tightened sufficiently to prevent loosening. Fill nut with grease to exclude ice or other contaminants.
6. Concrete grout over pins and pinning holes shall be non-shrinking, weak in strength, and of thick consistency.



PRECAST NOTES:

Concrete 28 day design strength of $f'c = 4000$ psi welded wire fabric shall conform to the requirements of AASHTO M55.

NOT TO SCALE

DESIGN APPROVED	ARIZONA DEPARTMENT OF TRANSPORTATION INTERMODAL TRANSPORTATION DIVISION TRAFFIC SIGNING & MARKING STANDARD DRAWINGS	REVISION 6/14
SIGNATURES		DRAWING NO. C-3
APPROVED FOR DISTRIBUTION	PRECAST CONCRETE BARRIER PIN AND LOOP ASSEMBLY	SHEET NO. 2 of 2
ON FILE		