

NO	DESCRIPTION OF REVISIONS	DATE	MADE BY
1	RE-ISSUE	2/02	L. LOPEZ
2	EDIT NOTES & TITLE BLOCK	8/06	L. LOPEZ
3	REVISED DRAWING, CHANGE TEXT CASE, UPDATE BORDER.		
4			

DATE  
6/14

MADE BY  
L. LOPEZ

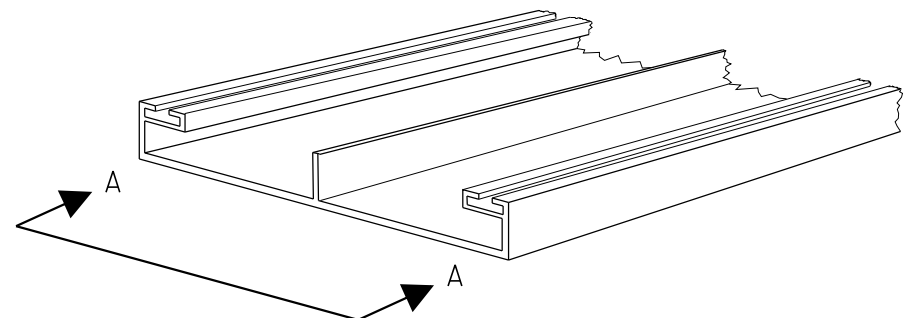
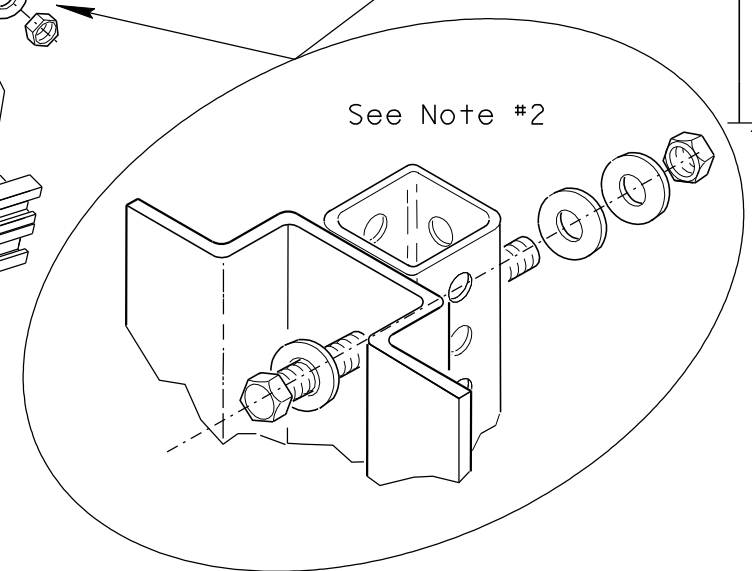
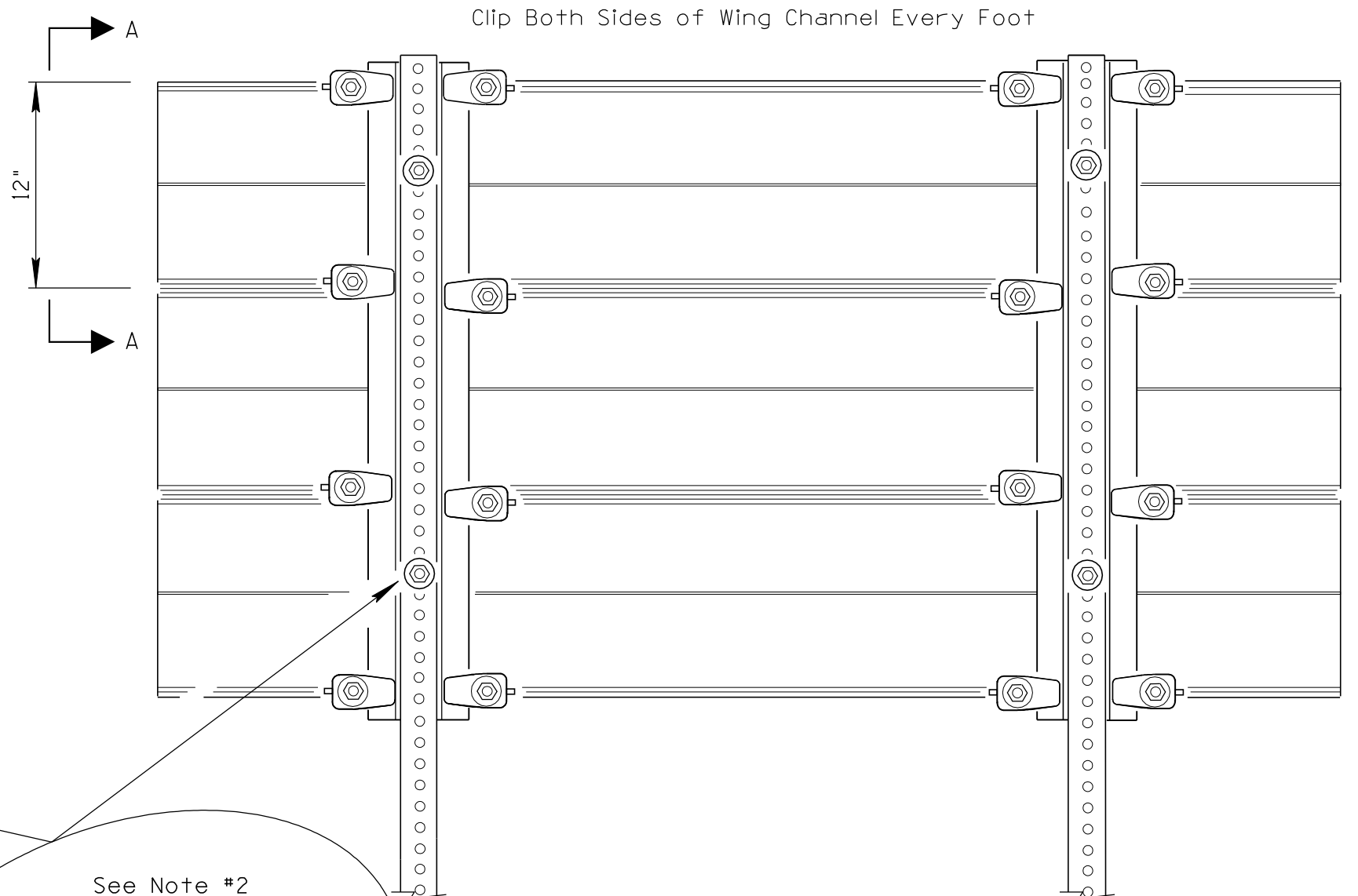
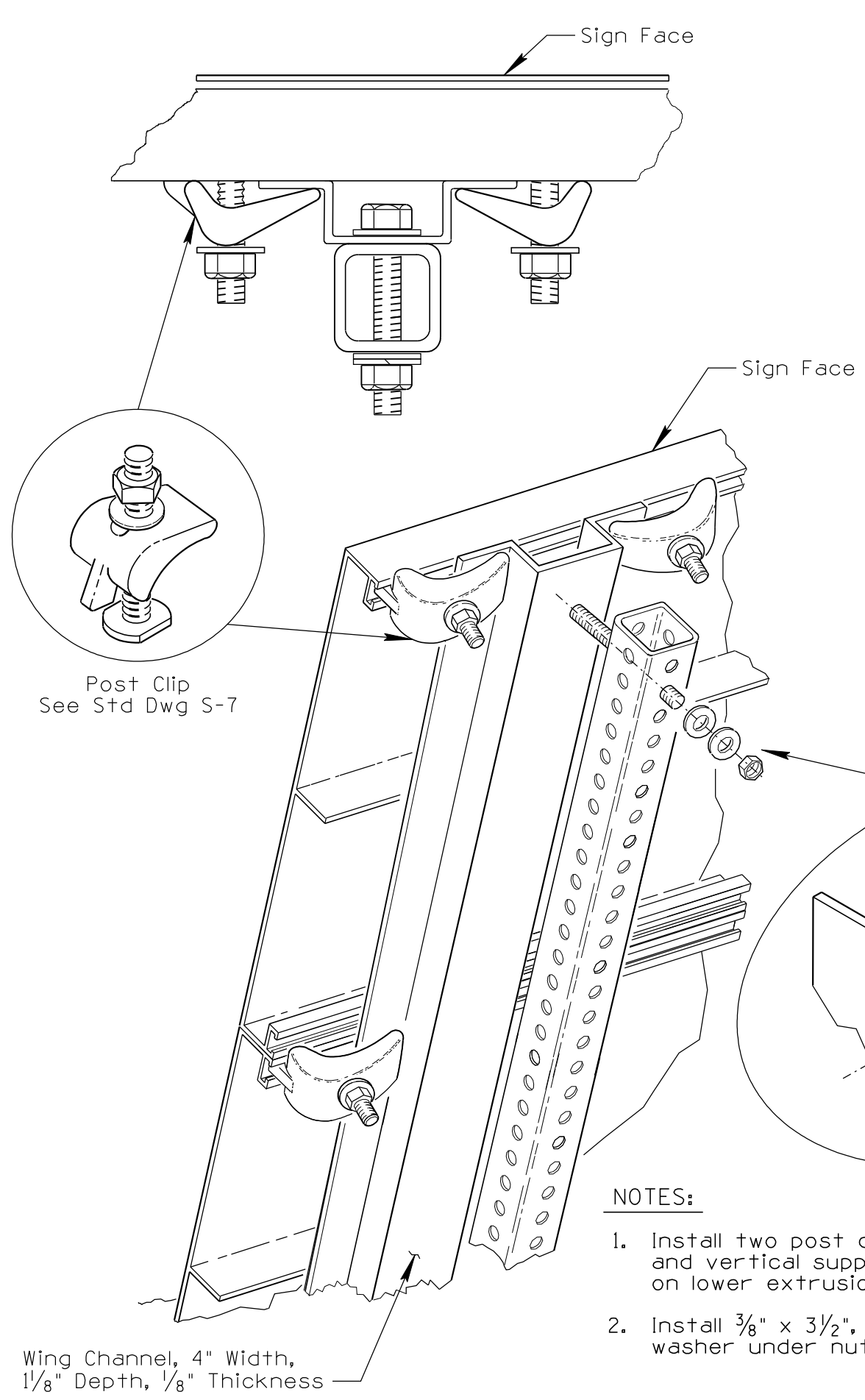
DESCRIPTION OF REVISIONS  
REVISED DRAWING, CHANGE TEXT CASE, UPDATE BORDER.

NO  
3  
4

DATE  
2/02  
8/06

MADE BY  
L. LOPEZ  
L. LOPEZ

DESCRIPTION OF REVISIONS  
EDIT NOTES & TITLE BLOCK



SECTION A-A  
EXTRUDED PANEL

NOTES:

1. Install two post clips at each junction of extrusions and vertical support, one on upper extrusion and one on lower extrusion where extrusions join one another.
2. Install 3/8" x 3/2", plated hex head bolt with flat and lock washer under nut. Install one flat washer under hex head.

Wing Channel, 4" Width,  
1 1/8" Depth, 1/8" Thickness

NOT TO SCALE

DESIGN APPROVED	ARIZONA DEPARTMENT OF TRANSPORTATION INTERMODAL TRANSPORTATION DIVISION TRAFFIC SIGNING & MARKING STANDARD DRAWINGS	REVISION 6/14
<b>SIGNATURES</b>		DRAWING NO. S-8
APPROVED FOR DISTRIBUTION	<b>ON FILE</b>	SHEET NO. 2 of 2