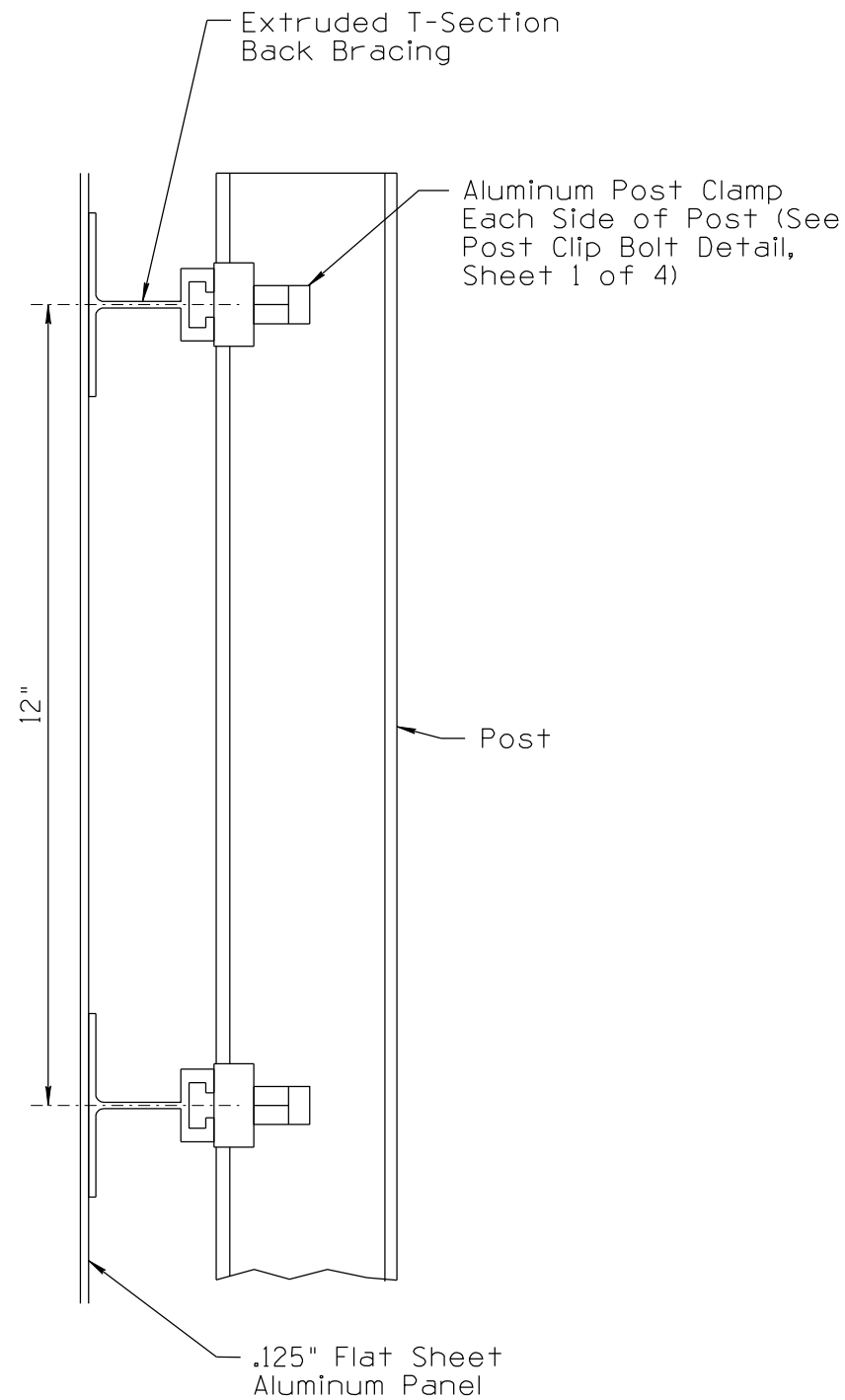
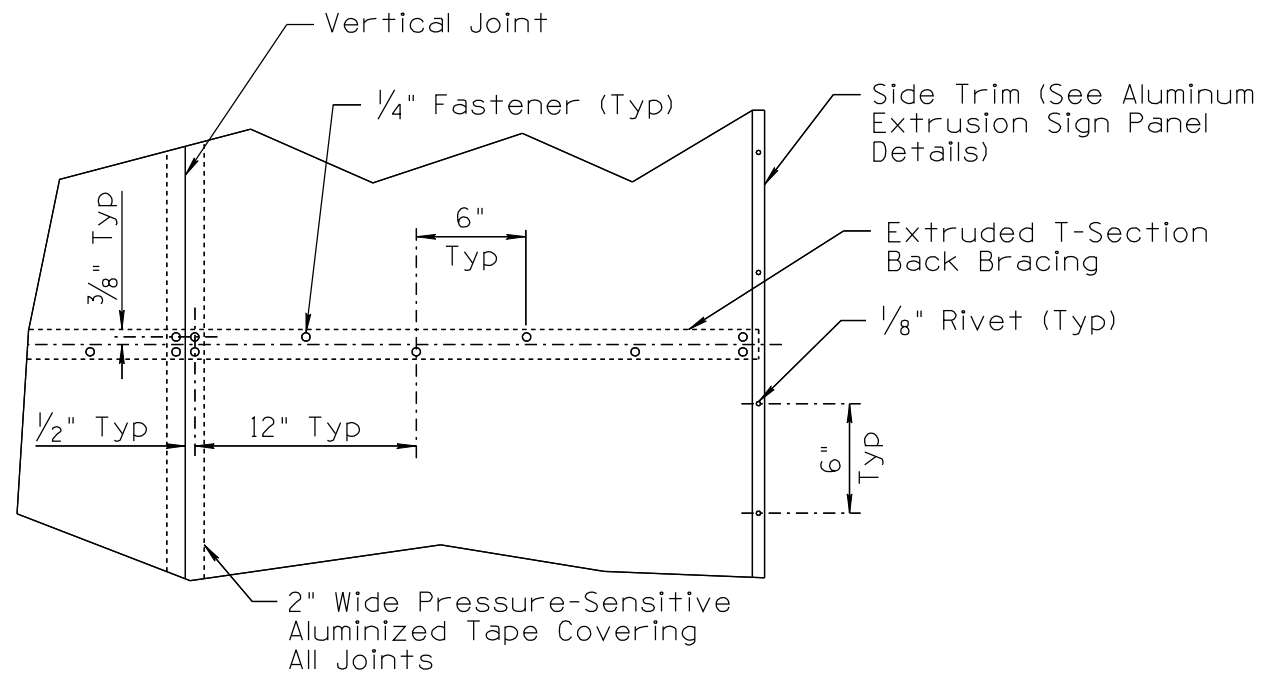


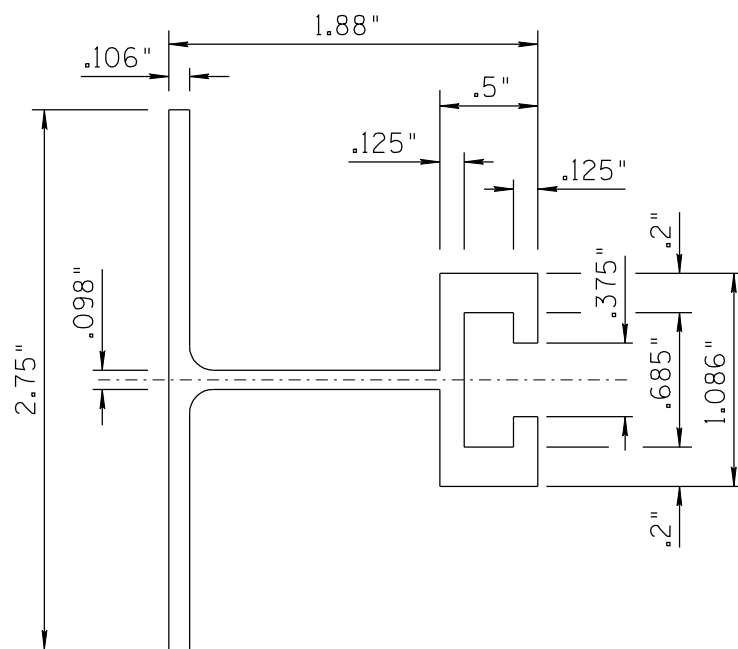
NO	DESCRIPTION OF REVISIONS	MADE BY	DATE
1	RE-ISSUE	L. LOPEZ	2/02
2	REMOVED INCREMENT DETAIL, REVISED DETAILS & NOTES.	L. LOPEZ	8/06
3	REVISED DRAWING, CHANGE TEXT CASE, MOVED TO SHEET 1 OF 2, UPDATED BORDER.	L. LOPEZ	6/14
4			



PANEL DETAIL



RIVET SPACING DETAIL



EXTRUDED T-SECTION BACK BRACING

NOTES:

1. The use of flat sheet aluminum panels on "S" and "W" posts shall be reserved for special circumstances and shall require the approval of ADOT Traffic Design and ADOT Traffic Operations.
2. Signs less than 60" high and 120" wide shall be made of a single sheet of aluminum.
3. Signs over 120" high may have horizontal and vertical joints; however, no sheet shall be less than 24" wide or 24" high.
4. All horizontal joints shall occur at extruded T-sections.
5. All screws, bolts, and lock washers shall be aluminum alloy, stainless steel, or plated steel.
6. All rivets shall be aluminum.
7. Vertical and horizontal joints are to be butt jointed and not overlapped.
8. All dimensions are in inches.

NOT TO SCALE

DESIGN APPROVED	ARIZONA DEPARTMENT OF TRANSPORTATION INTERMODAL TRANSPORTATION DIVISION TRAFFIC SIGNING & MARKING STANDARD DRAWINGS	REVISION 6/14
SIGNATURES		DRAWING NO. S-8
APPROVED FOR DISTRIBUTION	FLAT SHEET ALUMINUM PANEL ON BREAKAWAY POSTS INSTALLATION DETAIL	SHEET NO. 1 of 2
ON FILE		