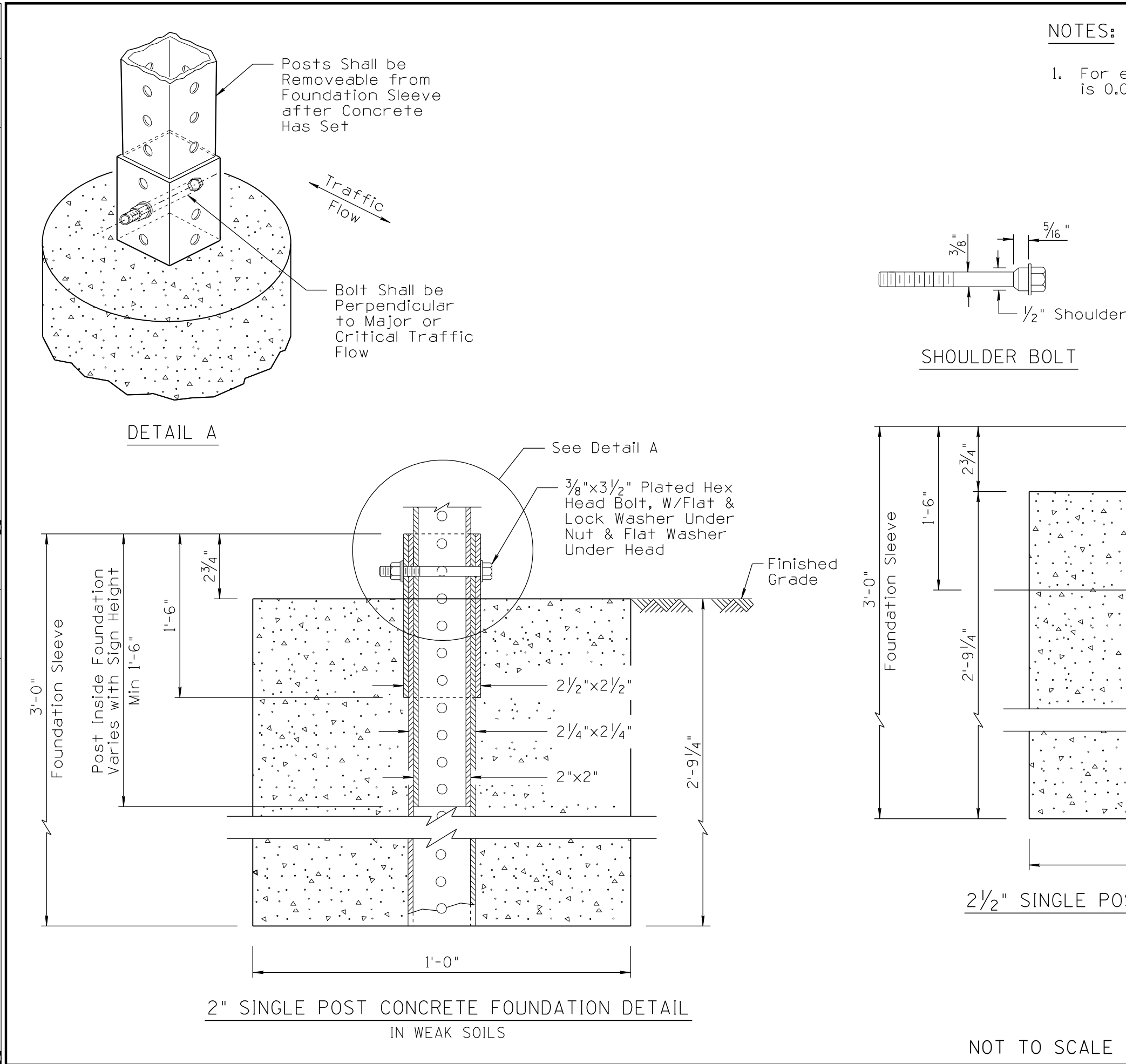


| | | | |
|----|--|------|----------|
| NO | DESCRIPTION OF REVISIONS | DATE | MADE BY |
| 1 | RE-ISSUE | 2/02 | L. LOPEZ |
| 2 | RE-DESIGN | 5/03 | M. ZUBI |
| 3 | NOTE #2 SPELLING CORRECTIONS | | |
| 4 | REVISED DRAWING, CHANGED TEXT TO UPPER AND LOWER CASE. ADDED NEW BORDER. | | |



NOTES:

- For estimating purposes; concrete quantity per post is 0.09 cubic yards for 1 foot diameter foundations.

| | | |
|---------------------------|--|-----------------------|
| DESIGN APPROVED | ARIZONA DEPARTMENT OF TRANSPORTATION INTERMODAL TRANSPORTATION DIVISION TRAFFIC SIGNING & MARKING STANDARD DRAWINGS | REVISION 6/14 |
| SIGNATURES | | DRAWING NO. S-3 |
| APPROVED FOR DISTRIBUTION | SQUARE TUBE SIGN POST FOUNDATION | SHEET NO. 15 of 16 |
| ON FILE | | |

NOT TO SCALE