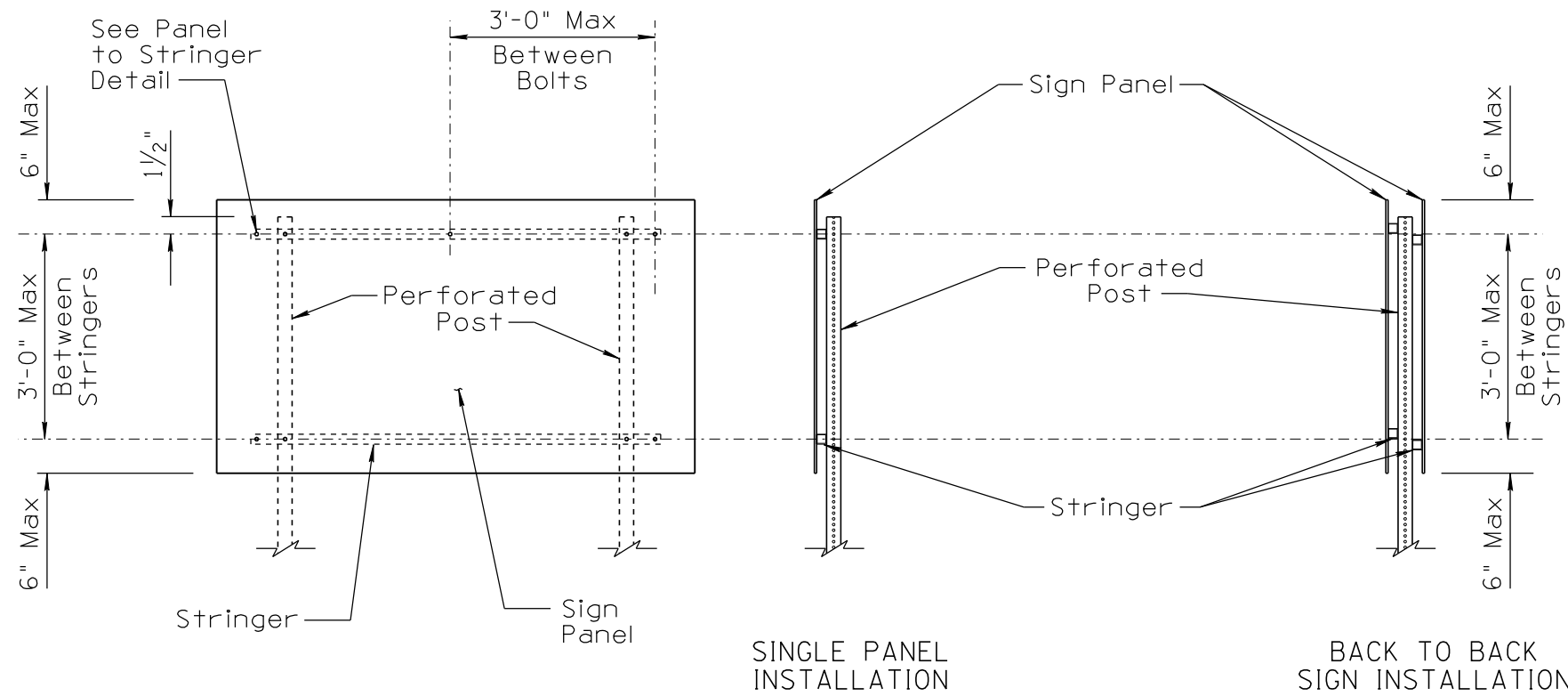


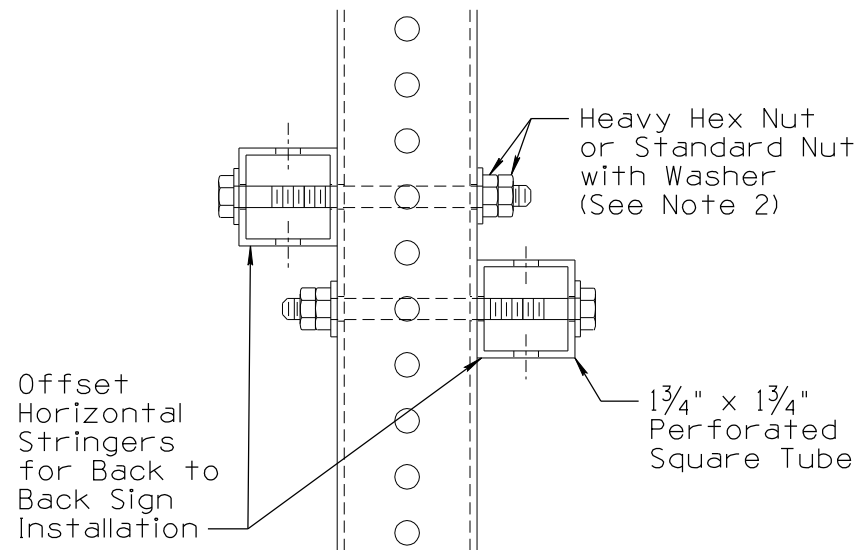
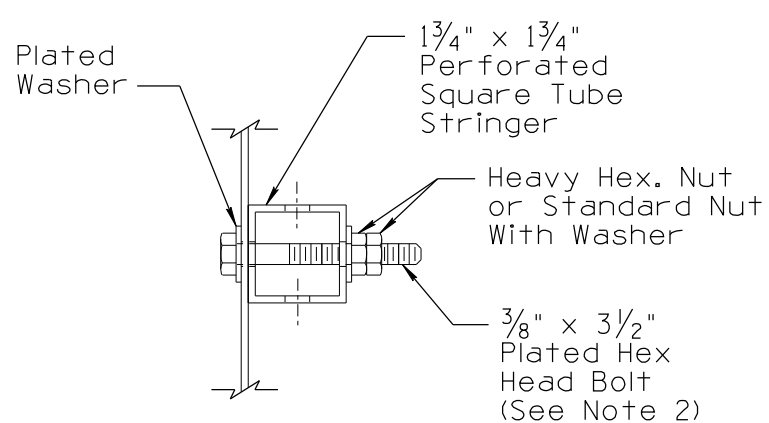
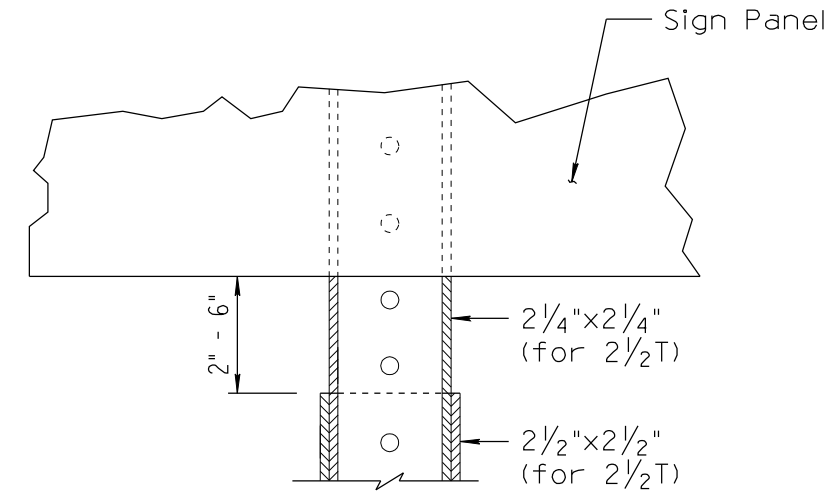
NO	DATE	MADE BY	DESCRIPTION OF REVISIONS
1	ORIGINAL ISSUE		
2			
3	6/14	L. LOPEZ	
4			



STRINGER DETAILS FOR FLAT SHEET GUIDE SIGNS

NOTES:

- 2 inch square tubes may be substituted for 1 3/4 inch square tubes on stringers with the approval of the Engineer.
- Double-nutting is required for all flat sheet signs and sign assemblies. The nuts shall be tightened firmly against each another. The bolt length shall be sufficient for a minimum of 3/8 inch to extend beyond the outermost nut.



STRINGER INFORMATION									
Panel Width	4'-0"	5'-0"	6'-0"	7'-0"	8'-0"	9'-0"	10'-0"	11'-0"	12'-0"
Stringer Length	4'-2"*	4'-6"	5'-0"	6'-0"	6'-8"	7'-4"	8'-0"	8'-8"	9'-4"
Bolts to Panel per Stringer	2	3	3	3	3	4	4	4	4

* Only needed on three-post signs to support panel.

NOT TO SCALE

DESIGN APPROVED	ARIZONA DEPARTMENT OF TRANSPORTATION INTERMODAL TRANSPORTATION DIVISION TRAFFIC SIGNING & MARKING STANDARD DRAWINGS	REVISION 6/14
SIGNATURES		DRAWING NO. S-3
APPROVED FOR DISTRIBUTION	STRINGER DETAILS FOR SQUARE TUBE POSTS	SHEET NO. 14 of 16
ON FILE		