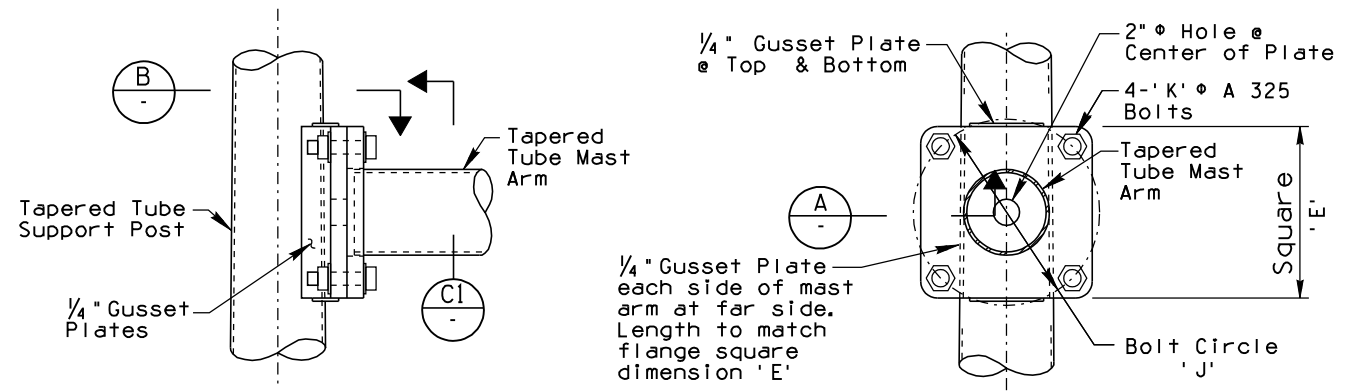
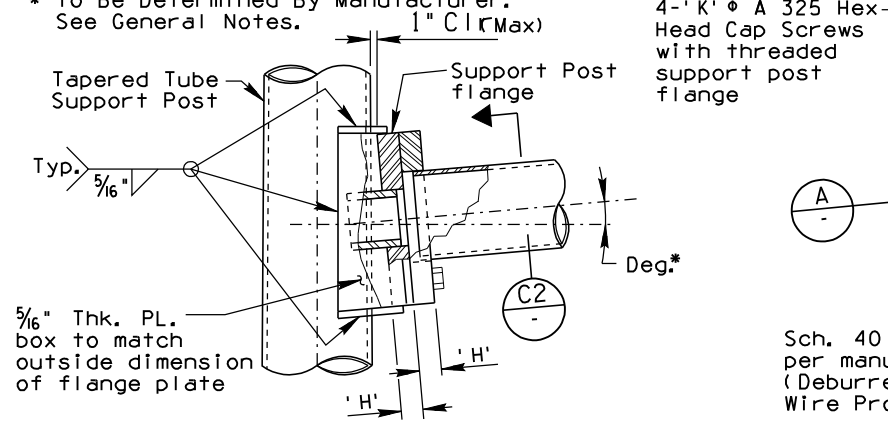


NO	DESCRIPTION OF REVISIONS	MADE BY	DATE
1	ORIGINAL ISSUE	BAKER E&E	7/04
2			
3			
4			



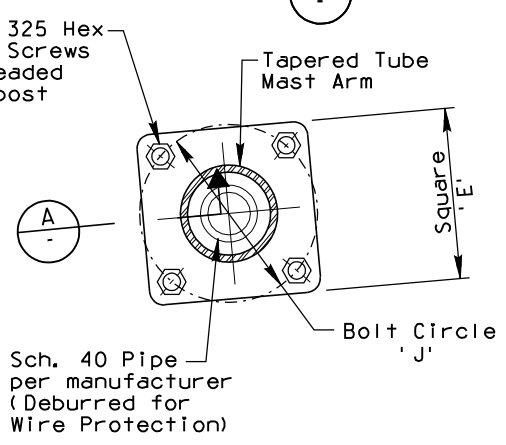
MAST ARM FLANGE DETAIL - ALTERNATIVE 1

* To Be Determined By Manufacturer. See General Notes.

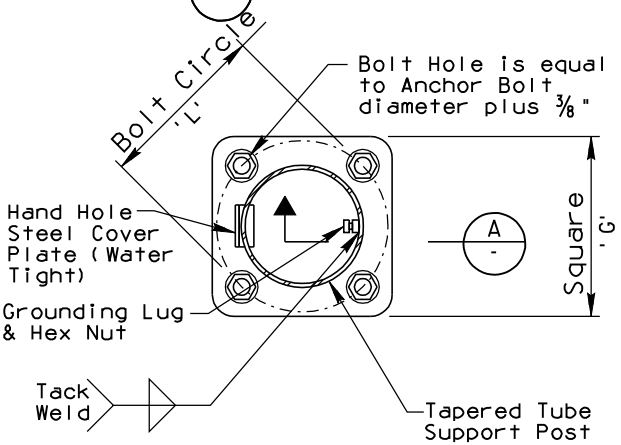


MAST ARM FLANGE DETAIL - ALTERNATIVE 2

SECTION C1

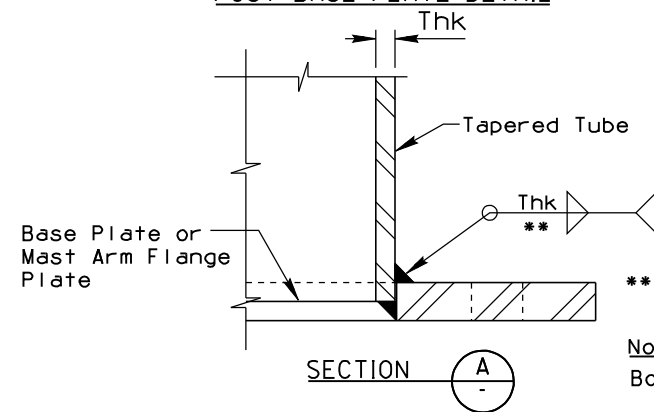
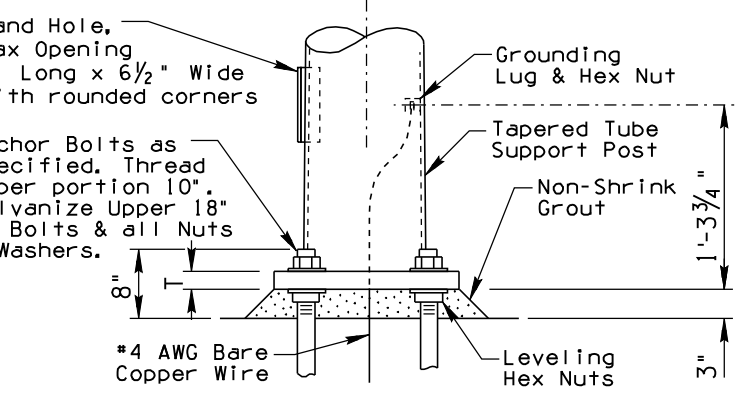


SECTION C2



POST BASE PLATE PLAN

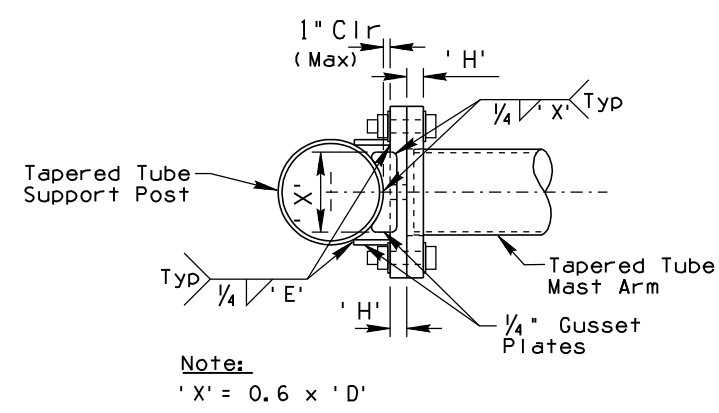
POST BASE PLATE DETAIL



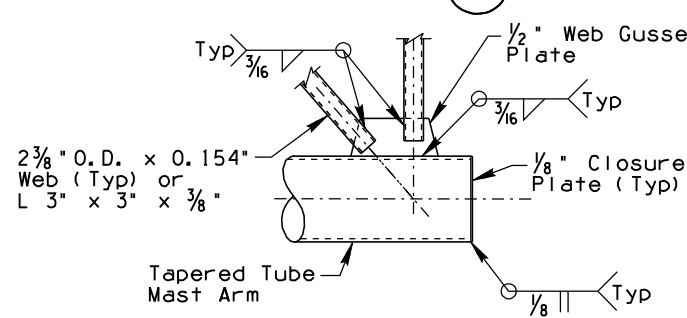
SECTION A

** Thk + 1/16" at Mast Arm Flange Plate
Thk + 1/8" at Base Plate

Note: Bolts, Nuts, & Washers not shown.



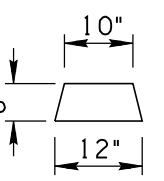
SECTION B



WEB TRUSS DETAIL

WELDING NOTES:

Welding of structural tubing shall conform to the requirements of the American Welding Society, Structural Welding Code, Latest Edition. All other welding shall conform to the requirements of the American Welding Society D1.1 Welding Code. All welding shall be continuous unless noted otherwise. All butt welds shall be full penetration using prequalified welding procedures and shall be inspected by ultrasonic testing. All butt welds shall be ground flush with base material.



Thickness of Filler Ring (if Required) to Match Difference in Tapered Tube Thickness x 1" Wide

.120" Thk. (11 Gauge) x 3" Wide Back-up Ring

SPLICE DETAIL

Mast Arm Length	Mast Arm			Mast Arm Flange Plate			
	Tapered Tube Minimum Yield	Outside Diameter 'D'	Wall Thickness	Plate Thk. 'H'	Square 'E'	Bolt Circle 'J'	Bolt Diameter 'K'
16'-0"	48.0 ksi	8"	0.1793"	1"	12.5"	12"	1.25"
	55.0 ksi	7"	0.1793"	1"	12"	11"	1.25"
	65.0 ksi	7"	0.1875"	1"	12"	11"	1.25"
22'-0"	48.0 ksi	10.75"	0.1793"	1.25"	14"	14.5"	1.25"
	55.0 ksi	9"	0.1793"	1.25"	14"	13"	1.25"
	65.0 ksi	8"	0.1875"	1.25"	13"	12"	1.25"
34'-0"	48.0 ksi	13.5"	0.2391"	1.5"	17.5"	18"	1.5"
	55.0 ksi	12.5"	0.2092"	1.5"	17"	17"	1.5"
	65.0 ksi	13"	0.1875"	1.5"	17"	17"	1.5"

DESIGN APPROVED	ARIZONA DEPARTMENT OF TRANSPORTATION INTERMODAL TRANSPORTATION DIVISION STANDARD DRAWINGS	REV. 7/04
APPROVED FOR DISTRIBUTION	TAPERED TUBE SIGN STRUCTURE CANTILEVER POST AND MAST ARM DETAILS	DRAWING NO. S-11