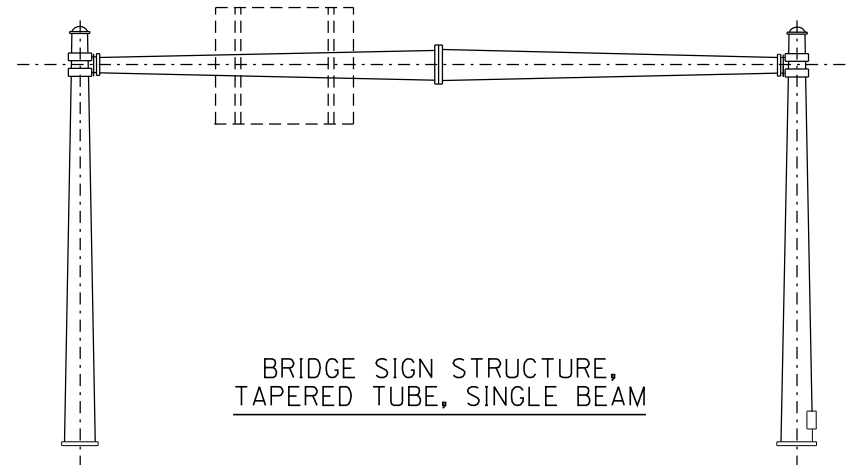
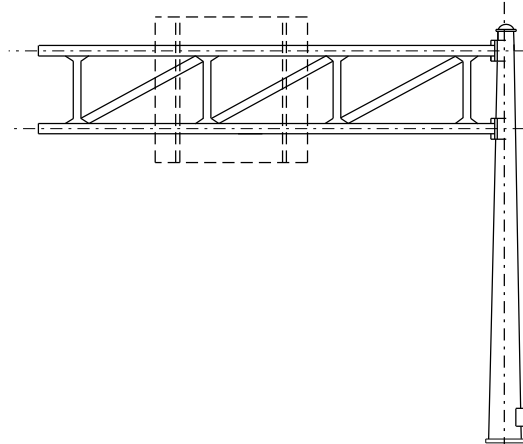


NO	DESCRIPTION OF REVISIONS	MADE BY	DATE
1	RE-ISSUE	L. LOPEZ	2/02
2			
3			
4			



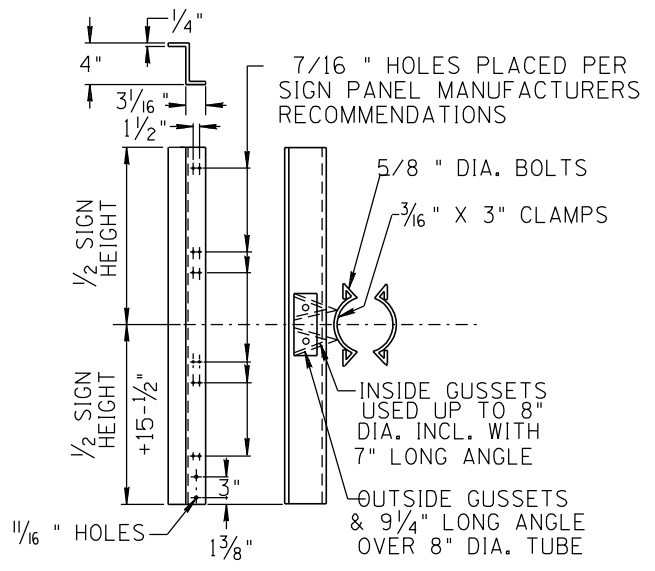
BRIDGE SIGN STRUCTURE,
TAPERED TUBE, SINGLE BEAM



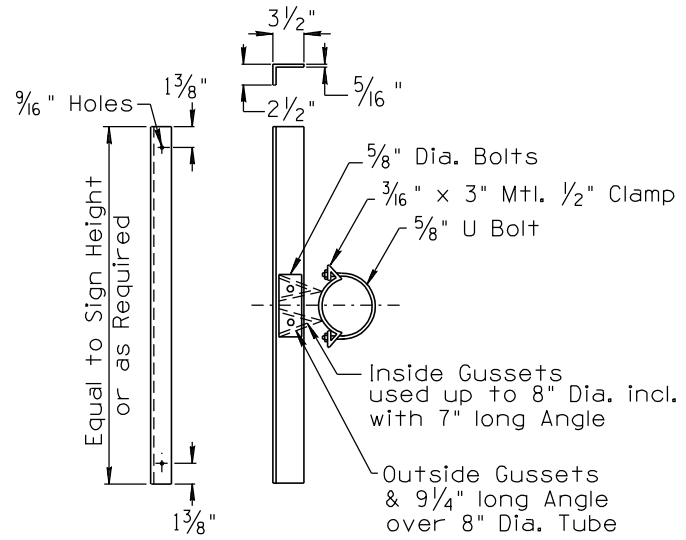
CANTILEVER SIGN STRUCTURE - TAPERED TUBE
DOUBLE ARM

GENERAL NOTES

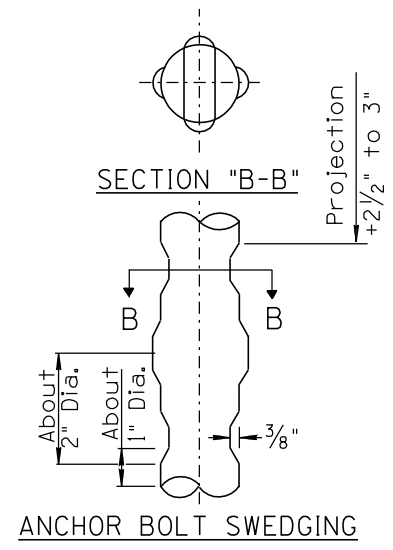
CONSTRUCTION: ARIZONA DEPARTMENT OF TRANSPORTATION STANDARD SPECIFICATION.
 DESIGN: DESIGN SHALL CONFORM TO A.A.S.H.T.O. SPECIFICATIONS, FOR THE DESIGN AND CONSTRUCTION OF STRUCTURAL SUPPORTS FOR HIGHWAY SIGNS, LATEST EDITION WITH ALL INTERIM UPDATES. THE DEAD LOAD DEFLECTION REQUIREMENTS IN SECTION 1.9.1 ARE WAIVED FOR SHORT SPAN SINGLE TAPERED TUBE STRUCTURES. REINFORCING STEEL SHALL BE INTERMEDIATE GRADE AND CONFORM TO THE REQUIREMENTS OF A.S.T.M. A-615, GRADE 40. ALL WELDING SHALL CONFORM TO ARIZONA HIGHWAY DEPARTMENT SPECIFICATIONS. ALL SIGN SUPPORTS SHALL BE SET TRUE AND PLUM. SEE PLANS FOR SPECIFIC LOCATIONS. TAPERED TUBES SHALL CONFORM TO THE REQUIREMENTS OF A.S.T.M. A-595, GRADE A AND A.S.T.M. A-572. ALL STRUCTURAL STEEL AND ANCHOR BOLTS SHALL CONFORM TO THE REQUIREMENTS OF A.S.T.M. A-36 UNLESS OTHERWISE NOTED. CONNECTION BOLTS SHALL CONFORM TO THE REQUIREMENTS OF A.S.T.M. A-325. ALL BOLTS, NUTS AND WASHERS OTHER THAN HIGH STRENGTH BOLTS AND ANCHOR BOLTS SHALL BE ZINC OR CADMIUM PLATED. SIGN AND LIGHTING SUPPORT BRACKETS SHALL BE GALVANIZED IN LIEU OF PAINTING. GALVANIZING SHALL CONFORM TO THE REQUIREMENTS OF A.S.T.M. A-123. VERTICAL CLEARANCE SHALL BE 18'-0" ABOVE HIGH POINT ON ROADWAY. TUBE DIMENSION AND SHAPE SHOWN ON PLANS ARE NOMINAL. ALL FOUNDATION CONCRETE SHALL BE CLASS S (F'C 2500).



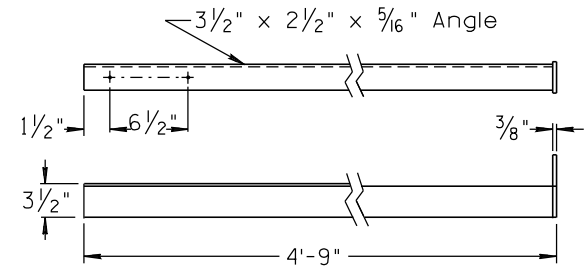
SINGLE TUBE ZEE BRACKET
SIGN WITH LIGHTS AND OUTRIGGERS



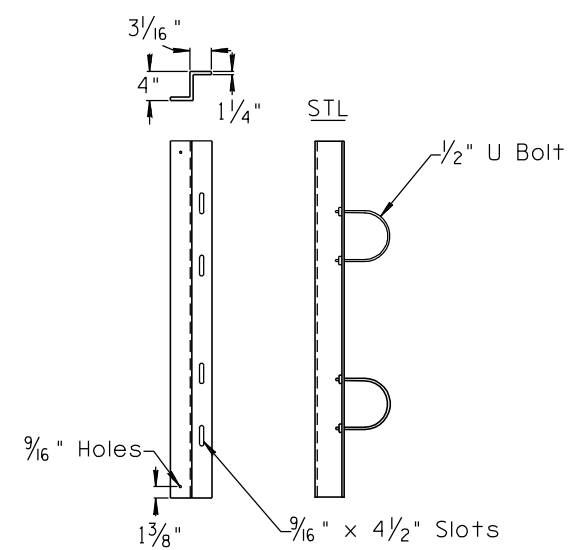
SINGLE TUBE ANGLE
SIGN WITHOUT LIGHTS



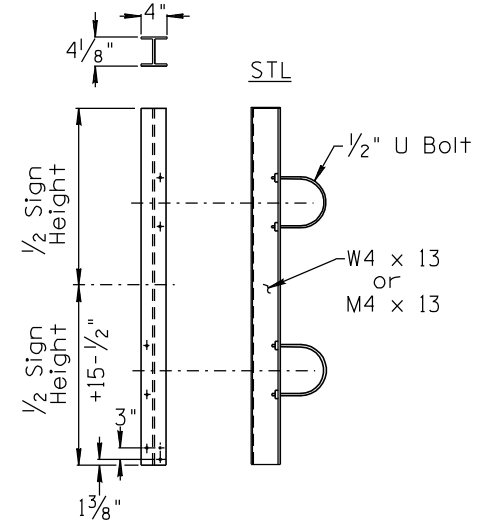
ANCHOR BOLT SWEDGING



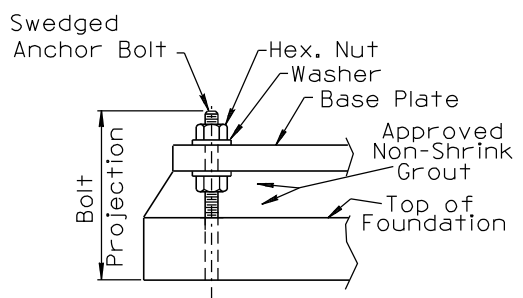
OUTRIGGER FOR DIRECT BOX LIGHT
OR CHANNEL STRINGERS



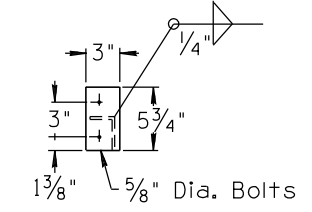
TWO TUBE ZEE BRACKET
SIGN WITHOUT LIGHTS



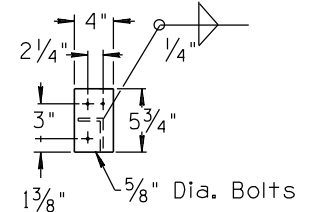
TWO TUBE "W" BEAM BRACKET
FOR CLIP-ON SIGN ATT. MT.
SIGN WITH LIGHTS & OUTRIGGERS



ANCHOR BOLT SETTING



FOR ZEE BRACKET



FOR W4 x 13
OR M4 x 13

NOT TO SCALE

DESIGN APPROVED	ARIZONA DEPARTMENT OF TRANSPORTATION INTERMODAL TRANSPORTATION DIVISION STANDARD DRAWINGS	REV. 2/02
APPROVED FOR DISTRIBUTION	TAPERED TUBE SIGN STRUCTURE	DRAWING NO. S-11