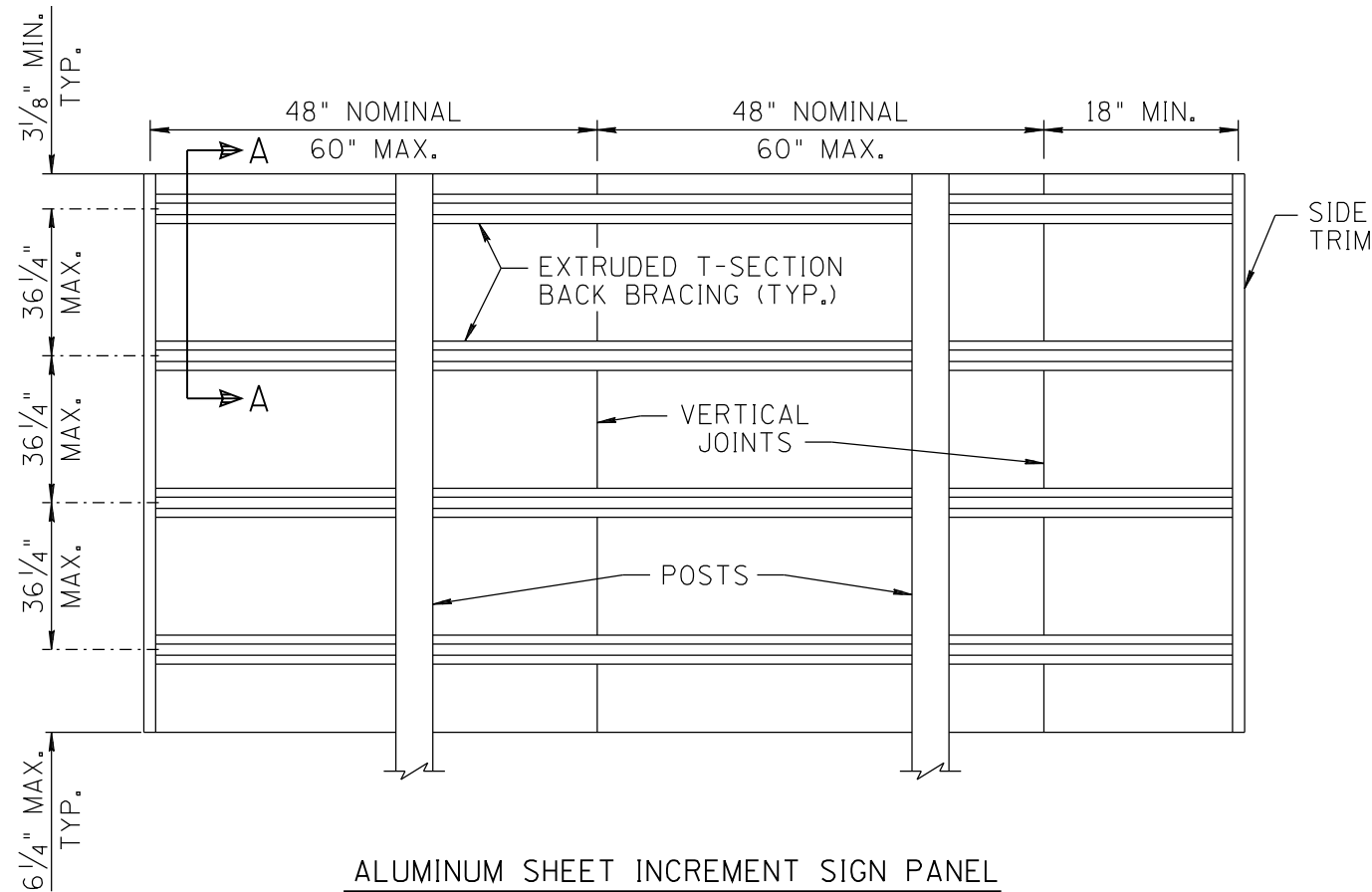
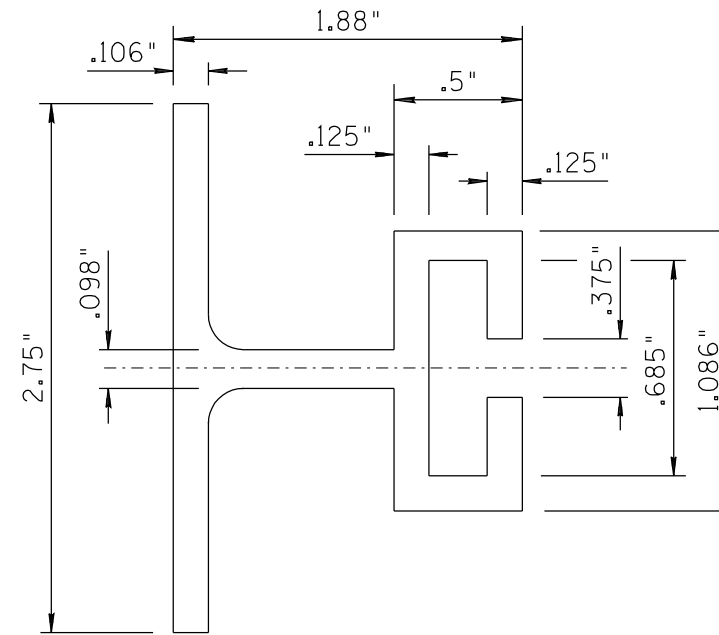


NO	DESCRIPTION OF REVISIONS	MADE BY	DATE
1	RE-ISSUE	L. LOPEZ	2/02
2			
3			
4			



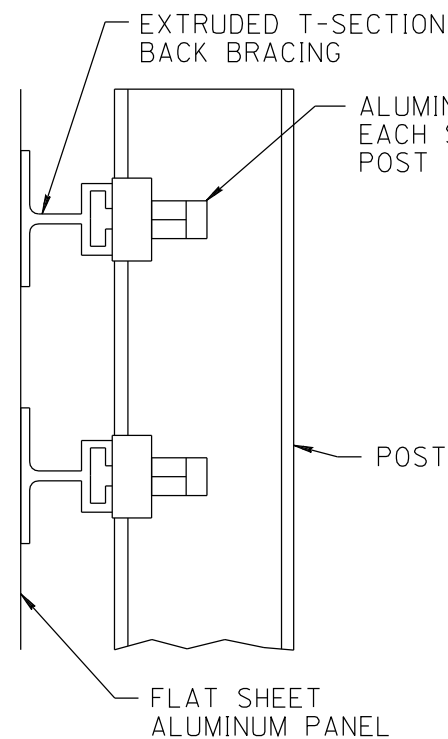
ALUMINUM SHEET INCREMENT SIGN PANEL



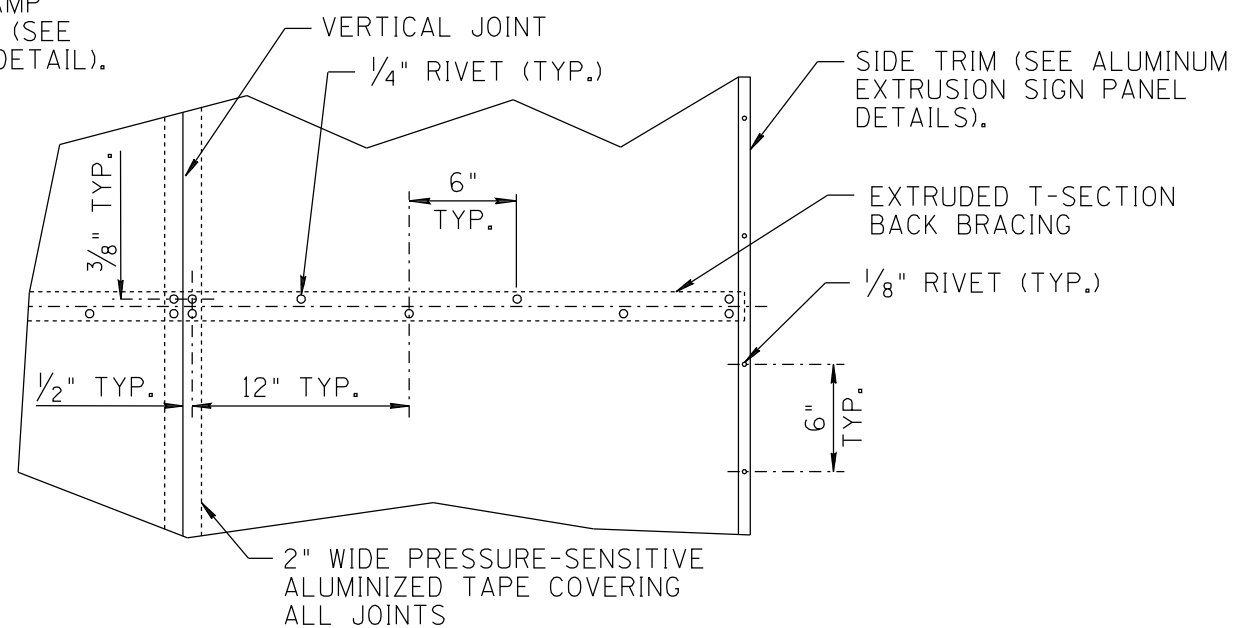
EXTRUDED T-SECTION BACK BRACING

NOTES:

1. ALL DIMENSIONS ARE IN INCHES, EXCEPT AS NOTED.
2. SIGNS LESS THAN 48" HIGH AND 144" WIDE SHALL BE MADE OF A SINGLE SHEET OF ALUMINUM.
3. SIGNS LESS THAN 144" HIGH SHALL HAVE NO HORIZONTAL JOINTS.
4. SIGNS OVER 144" HIGH MAY HAVE HORIZONTAL AND VERTICAL JOINTS; HOWEVER, NO SHEET SHALL BE LESS THAN 18" WIDE OR 18" HIGH.
5. ALL HORIZONTAL JOINTS SHALL OCCUR AT AN EXTRUDED T-SECTION.
6. ALL SCREWS, BOLTS, AND LOCKWASHER SHALLS BE OF ALUMINUM ALLOY, STAINLESS STEEL, OR CADMIUM PLATED STEEL.
7. ONLY ALUMINUM RIVETS SHALL BE USED.



SECTION A-A



RIVET SPACING DETAIL

SHEET 3 OF 4
NOT TO SCALE

DESIGN APPROVED	ARIZONA DEPARTMENT OF TRANSPORTATION INTERMODAL TRANSPORTATION DIVISION STANDARD DRAWINGS	REV. 2/02
APPROVED FOR DISTRIBUTION	ALUMINUM EXTRUSION PANEL INSTALLATION DETAIL	DRAWING NO. S-8