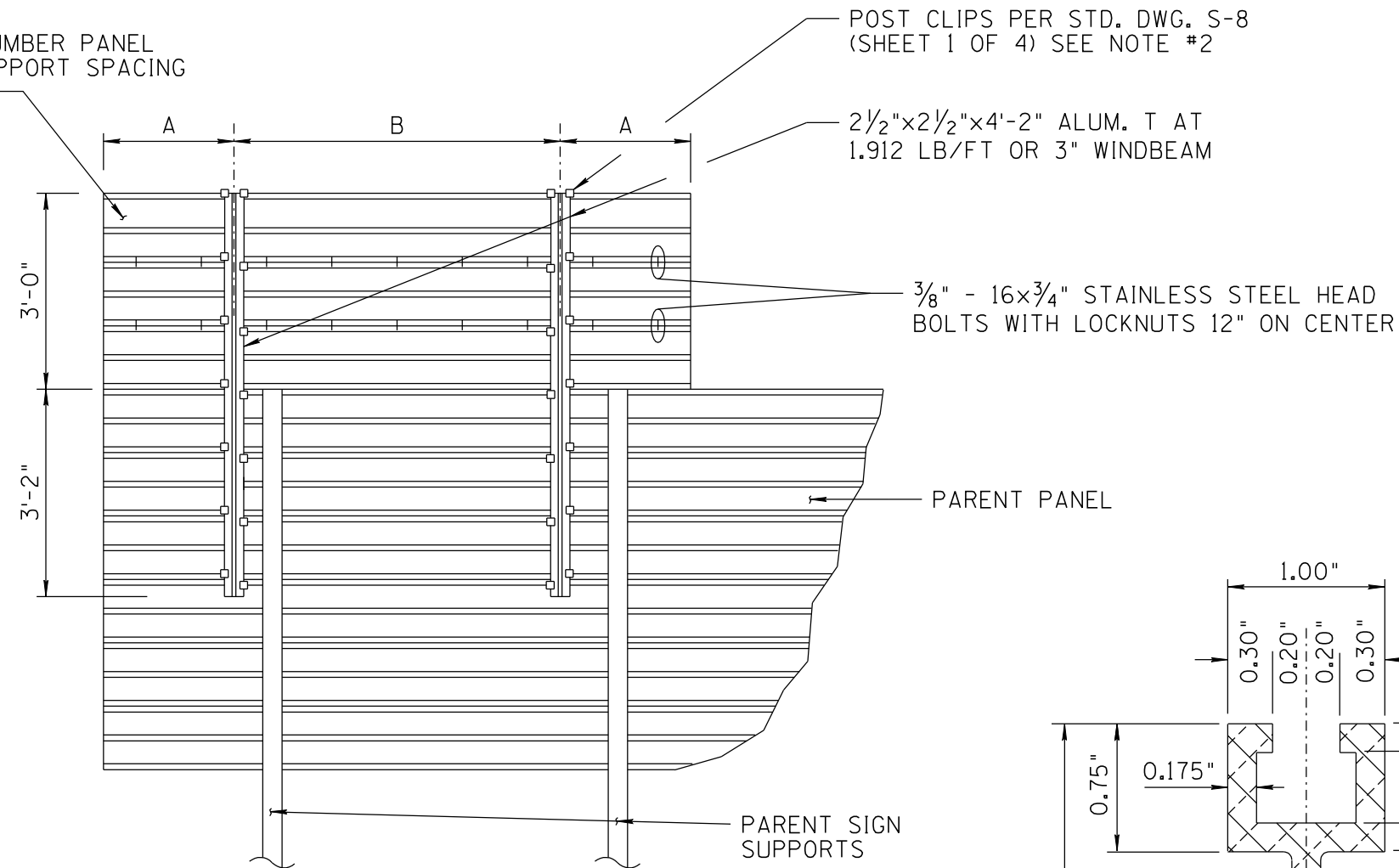


NO	DESCRIPTION OF REVISIONS	DATE	MADE BY
1	RE-ISSUE	2/02	L. LOPEZ
2	CALL-OUT CORRECTIONS	8/06	L. LOPEZ
3	CORRECTED EXIT PANEL SIZE		
4			

EXIT NUMBER PANEL  
SEE SUPPORT SPACING  
CHART

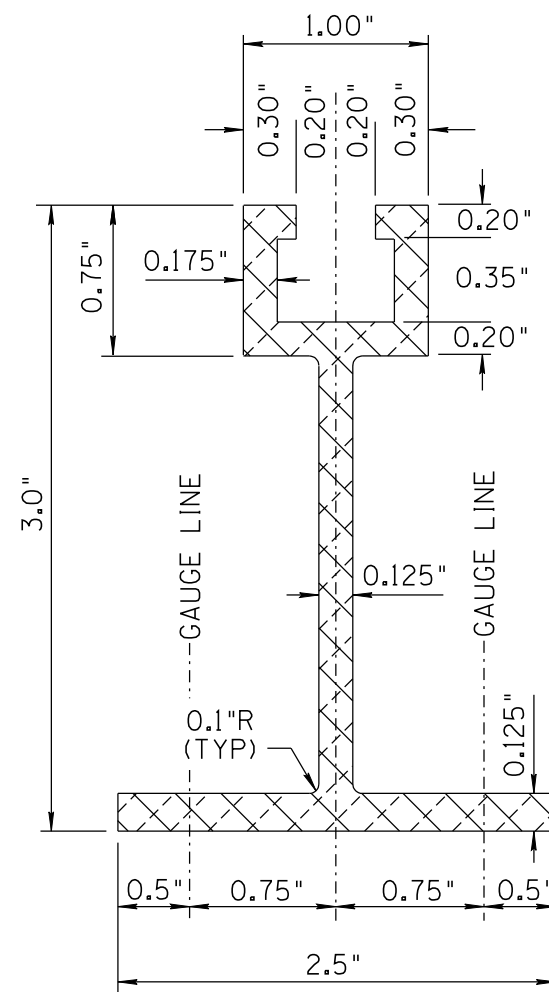


ALUMINUM EXTRUSION PANEL  
REAR ELEVATION

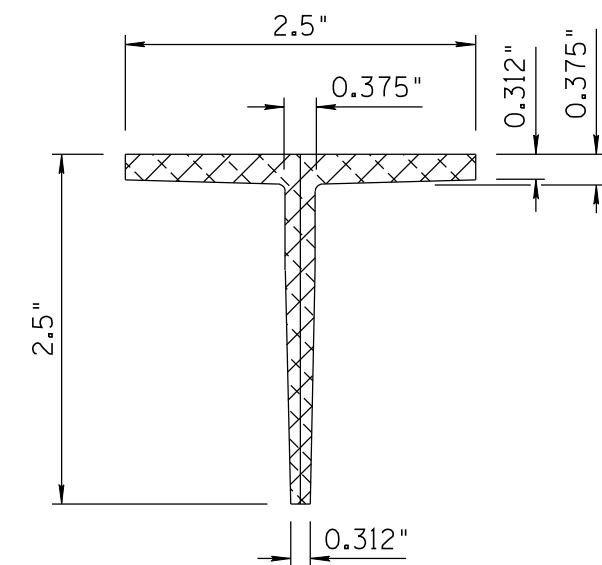
EXIT NUMBER PANEL SUPPORT SPACING CHART		
PANEL WIDTH	DIMENSION A	DIMENSION B
7'	1'-0"	5'-0"
8'	1'-6"	5'-0"
9'	2'-0"	5'-0"
11'	2'-6"	6'-0"
14'	2'-6"	9'-0"
15'	3'-0"	9'-0"

NOTES:

1. THE EXIT NUMBER PANEL SHALL BE MOUNTED WITH TWO UPRIGHTS SO THAT ITS RIGHT EDGE IS EVEN WITH THE RIGHT EDGE OF THE PARENT SIGN OR REVERSE FOR LEFT HAND EXITS.
2. INSTALL TWO POST CLIPS AT EACH JUNCTION OF EXTRUSIONS AND VERTICAL SUPPORT, ONE ON UPPER EXTRUSION AND ONE ON LOWER EXTRUSION WHERE EXTRUSIONS JOIN ONE ANOTHER.
3. THE EXIT PANEL SUPPORT MAY BE MOVED A MAXIMUM OF 6 INCHES EITHER DIRECTION IF IT CONFLICTS WITH THE PARENT SIGN SUPPORT.
4. SUPPORTS SHALL BE 6061-T6 ALUMINUM.



WINDBEAM CROSS SECTION



ALUMINUM T SECTION

NOT TO SCALE

DESIGN APPROVED	ARIZONA DEPARTMENT OF TRANSPORTATION INTERMODAL TRANSPORTATION DIVISION TRAFFIC SIGNING & MARKING STANDARD DRAWINGS	REVISION 8/11
APPROVED FOR DISTRIBUTION		DRAWING NO. S-8
ALUMINUM EXTRUSION EXIT PANEL DETAIL		SHEET NO. 2 OF 4