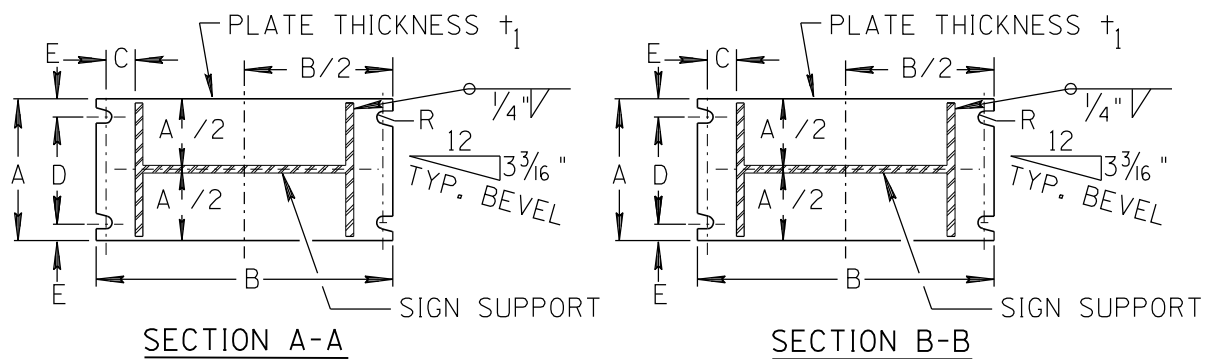
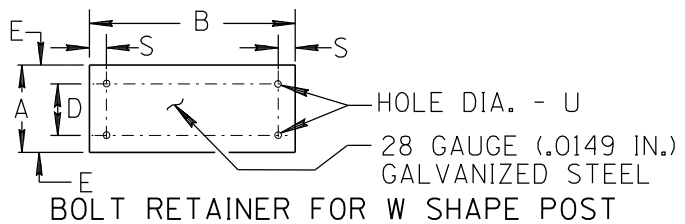
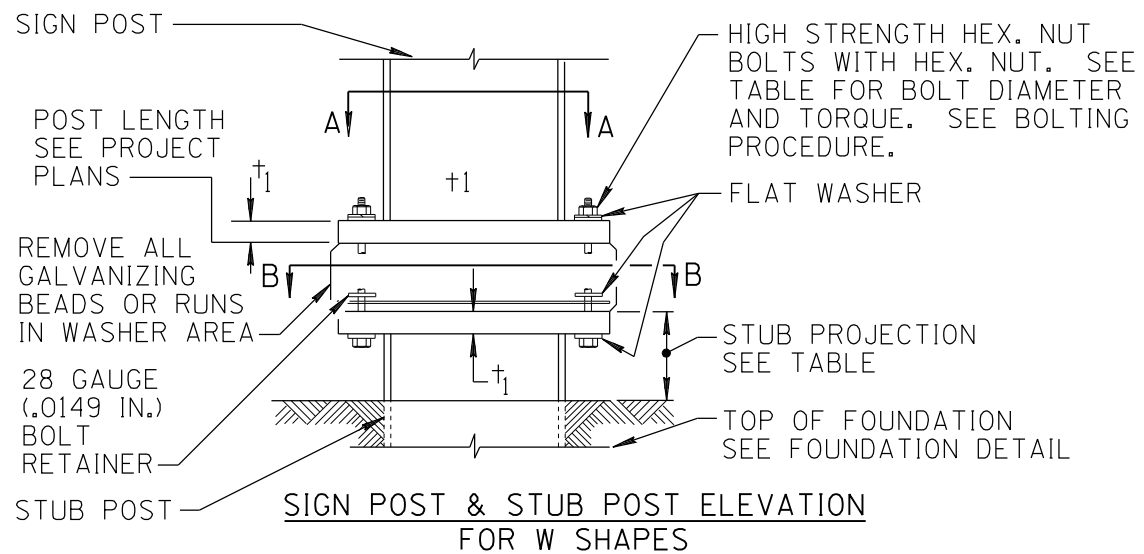


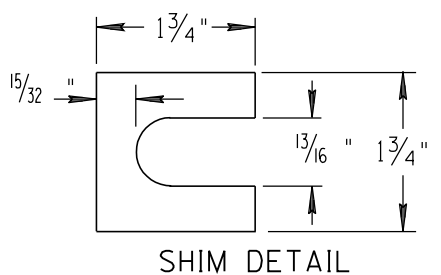
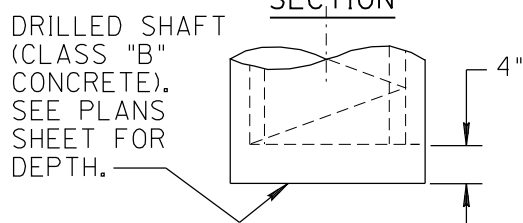
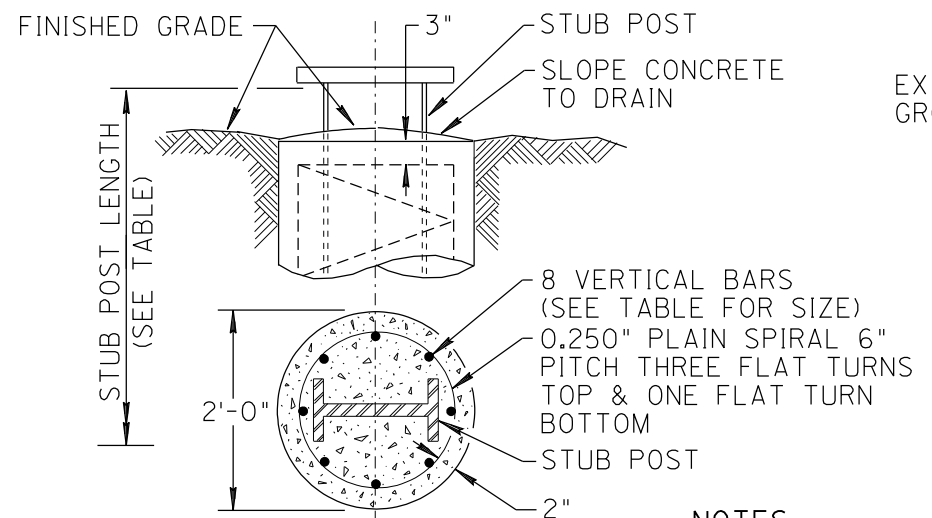
NO	DESCRIPTION OF REVISIONS	MADE BY	DATE
1	CHANGED BORDER	L. LOPEZ	8/00
2			
3			
4			



SECTIONS SHOWN ARE FOR INSTALLATIONS ON RIGHT SHOULDER AND GORE. PLATE SLOT BEVELS ARE OPPOSITE HAND FROM THAT SHOWN FOR INSTALLATION ON LEFT SHOULDER.

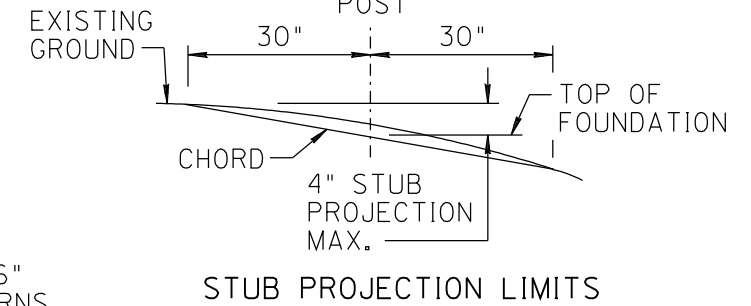
BASE CONNECTION DATA TABLE

POST SIZE	BOLT SIZE AND TORQUE	DIMENSIONS FOR POST SIZES									
		A	B	C	D	E	R	t <sub>1</sub>	S	U	
W6x9	5/8" DIA. x 3" TORQUE = 19 TO 29 FOOT-LBS	5 3/4"	9 7/8"	1 1/4"	2 3/4"	1 1/2"	11/32"	3/4"	3/4"	11/16"	
W6x12		5 3/4"	10"	1 1/4"	2 3/4"	1 1/2"	11/32"	3/4"	3/4"	11/16"	
W8x18		5 3/4"	12 1/8"	1 1/4"	2 3/4"	1 1/2"	11/32"	3/4"	3/4"	11/16"	
W10x22	3/4" DIA. x 3 1/2" TORQUE = 31 TO 46 FOOT-LBS	6 1/2"	14 5/8"	1 3/8"	3 1/2"	1 1/2"	13/32"	1"	7/8"	13/16"	



FURNISH 2 EACH 0.012"± THICK AND 2 EACH 0.032"± THICK SHIMS PER POST. SHIMS SHALL BE FABRICATED FROM BRASS SHIM STOCK OR STRIP CONFORMING TO THE REQUIREMENTS OF A.S.T.M. - B - 36. FOUR SHIMS PER BOLT MAXIMUM.

FOUNDATION DATA				APPROXIMATE QUANTITIES PER LIN. FT.		FOUNDATION DEPTH (SEE NOTE 2 ALSO)	
POST SIZE	STUB LENGTH	STUB PROJECTION	VERTICAL BAR SIZE	CONC. CU. YD.	STEEL LBS.	SLOPES ≤ 4:1	SLOPES > 4:1
W6x9	2'-0"	3"	#5	0.116	8.9	TWO OR THREE POSTS	TWO OR THREE POSTS
W6x12	2'-0"	3"	#5	0.116	8.9	6'-0"	6'-0"
W8x18	2'-6"	3"	#7	0.116	16.3	7'-0"	7'-6"
W10x22	3'-0"	2 1/2"	#9	0.116	26.5	8'-0"	8'-6"



NOTES:

1. ALL STUB POSTS SHALL BE GALVANIZED A MINIMUM OF 12" DOWN FROM THE BASE OF PLATE.
2. WHERE SOLID ROCK IS ENCOUNTERED, FOUNDATION SHALL BE PLAN DEPTH OR EXTENDED 2' MINIMUM INTO THE ROCK.
3. ALL PLATE HOLES SHALL BE DRILLED. ALL PLATE CUTS SHALL PREFERABLY BE SAWCUTS; FLAME CUTTING WILL BE PERMITTED, PROVIDED ALL EDGES ARE GROUND SMOOTH.

PROCEDURE FOR BOLTING & ASSEMBLY OF BASE CONNECTION

1. ASSEMBLE POST TO STUB WITH BOLTS AND WITH ONE FLAT WASHER ON EACH BOLT BETWEEN PLATES.
2. SHIM AS REQUIRED TO PLUMB POST. (4 SHIMS PER BOLT MAXIMUM)
3. TIGHTEN ALL BOLTS THE MAXIMUM POSSIBLE WITH 12" TO 15" WRENCH TO BED WASHERS AND SHIMS AND TO CLEAN BOLT THREADS, THEN LOOSEN EACH BOLT IN TURN AND RETIGHTEN BOLTS IN A SYSTEMATIC ORDER TO THE PRESCRIBED TORQUE (SEE TABLE). TIGHTEN THE BOLTS IN THE BASE CONNECTION TO THE TORQUE SHOWN. DO NOT OVERTIGHTEN.
4. DO NOT BURR THREADS AT JUNCTION.

<b>APPROVED FOR DISTRIBUTION</b> 	DESIGN APPROVED	ARIZONA DEPARTMENT OF TRANSPORTATION INTERMODAL TRANSPORTATION DIVISION STANDARD DRAWINGS	REV. 8/00
	BREAKAWAY POST DETAILS FOR W SHAPE GUIDE SIGNS		DRAWING NO. S-5

NOT TO SCALE