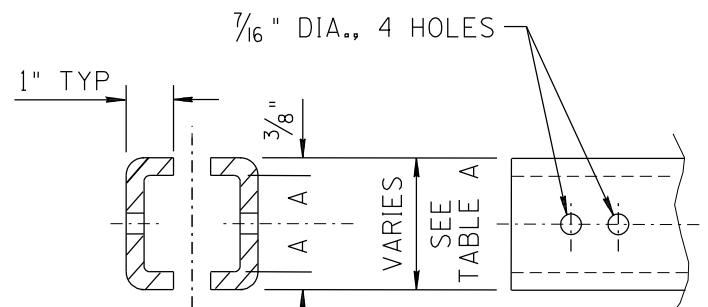
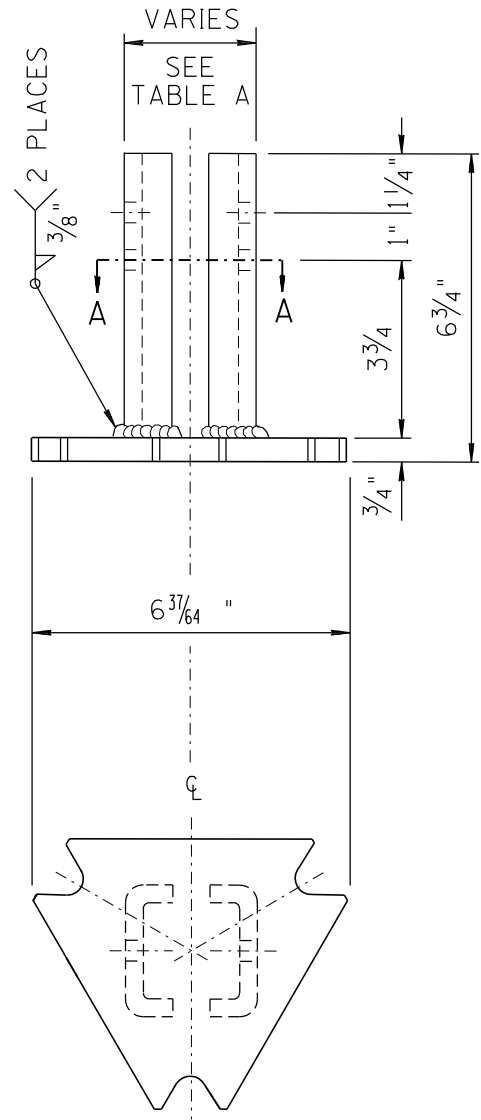


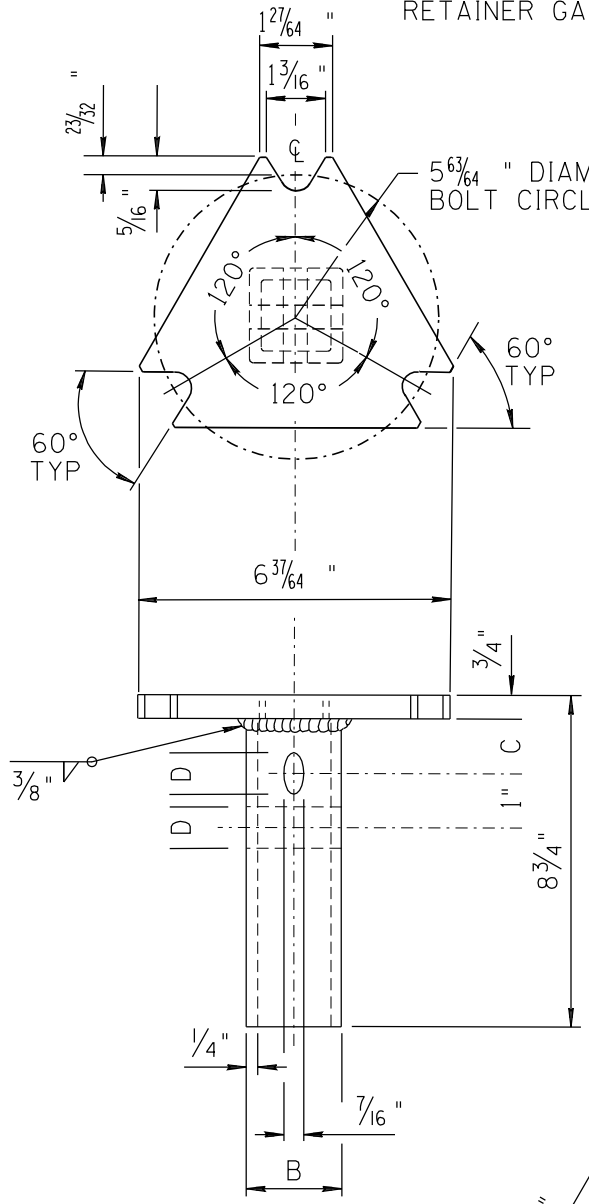
NO	DESCRIPTION OF REVISIONS	MADE BY	DATE
1	RE-ISSUE	L. LOPEZ	2/02
2			
3			
4			



SECTION A-A



TOP FITTING



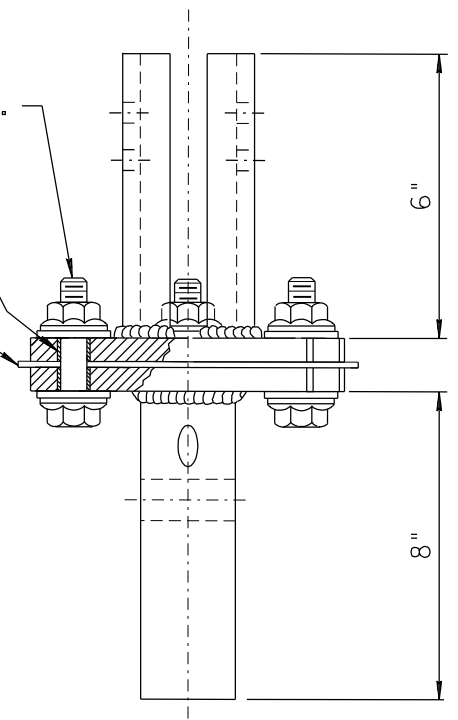
BOTTOM FITTING

TABLE A		
DIMENSIONS	2 INCH POST	2 1/2 INCH POST
A	1 1/64 "	1 17/64 "
B	2"	2 1/2"
C	1 1/32 "	1 1/8 "
D	7/16 "W x 5/8 "H	7/16 " DIA

1/2" x 2 1/2" BOLT WITH 2 FLAT WASHERS AND HEX HEAD NUT (TYP)  
TORQUE = 36.8 FT-LBS.

RELEASE SLEEVE, TYP

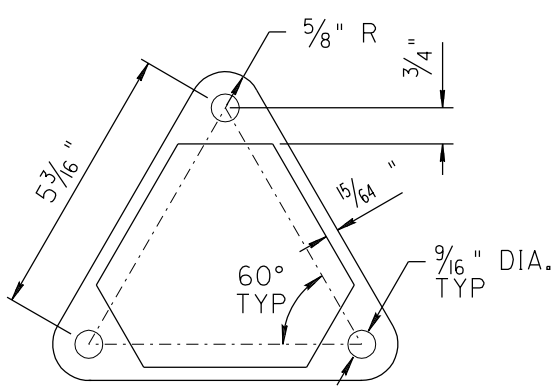
TEFLON BOLT RETAINER GASKET



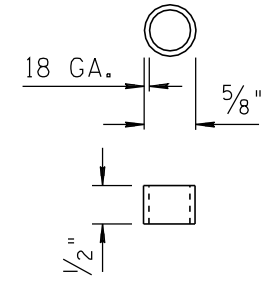
ASSEMBLY (REAR VIEW)

NOTES:

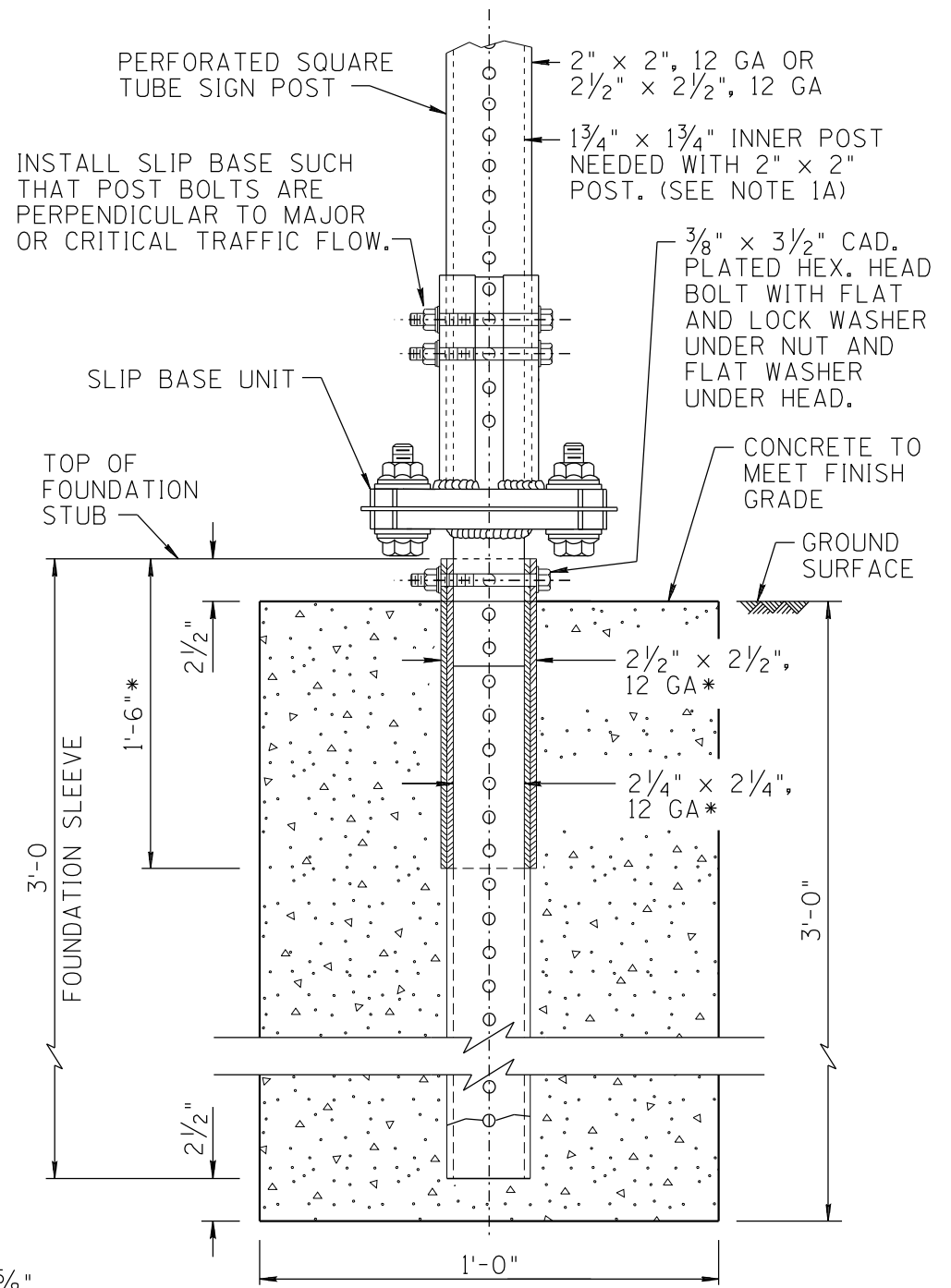
- SLIP BASE SHALL BE USED WHEN;
  - "TELESCOPED" POSTS ARE USED. MINIMUM SECTION MODULUS REQUIRED = 0.590 CUBIC INCHES
  - TWO POSTS OF 2 1/2" x 2 1/2" OR LARGER ARE USED.
  - ALL THREE POST INSTALLATIONS.



TEFLON BOLT RETAINER GASKET  
1/32" THICK



RELEASE SLEEVE  
6 REQUIRED PER INSTALLATION



FOUNDATION DETAILS

\* FOR 2" SLIP BASE, A SINGLE 3'-0" LONG 2 1/2" x 2 1/2", 7GA FOUNDATION SLEEVE MAYBE SUBSTITUTED FOR 2 1/4" + 2 1/2" NESTED COMBINATION. FOR 2 1/2" SLIP BASE, USE A SINGLE 3'-0" LONG 3" x 3", 7GA FOUNDATION SLEEVE.

SHEET 3 OF 4  
NOT TO SCALE

DESIGN APPROVED	ARIZONA DEPARTMENT OF TRANSPORTATION INTERMODAL TRANSPORTATION DIVISION STANDARD DRAWINGS	REV. 2/02
APPROVED FOR DISTRIBUTION	SQUARE TUBE POST SLIP BASE DETAILS	DRAWING NO. S-1