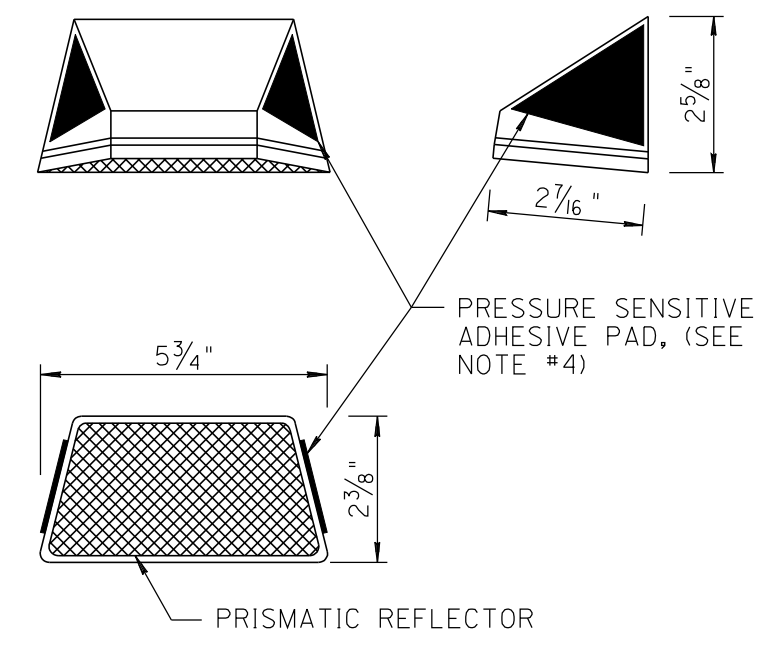
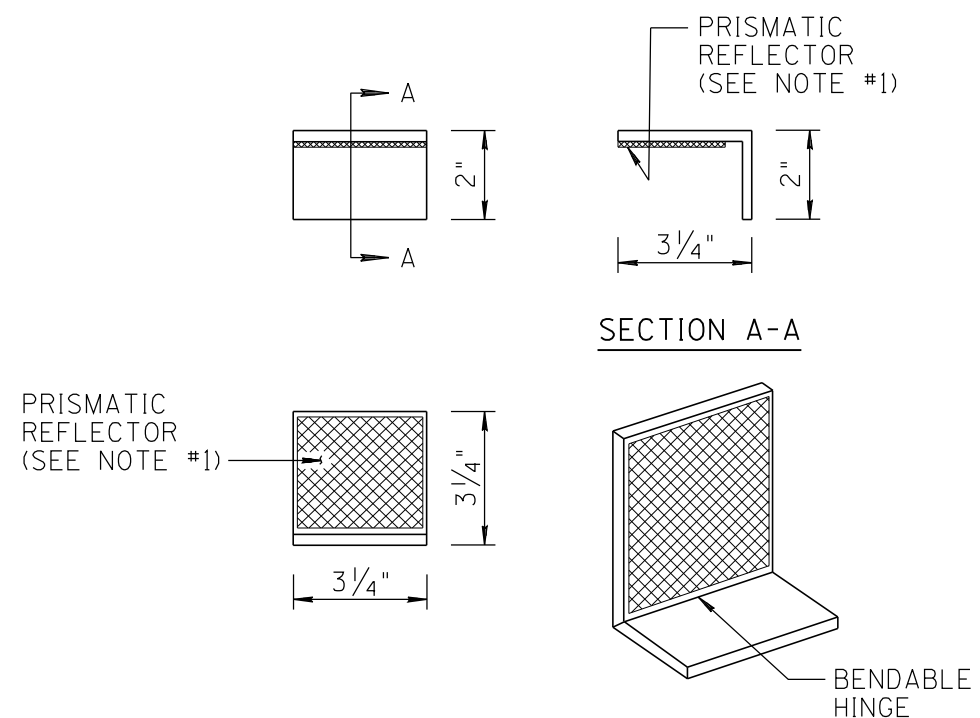
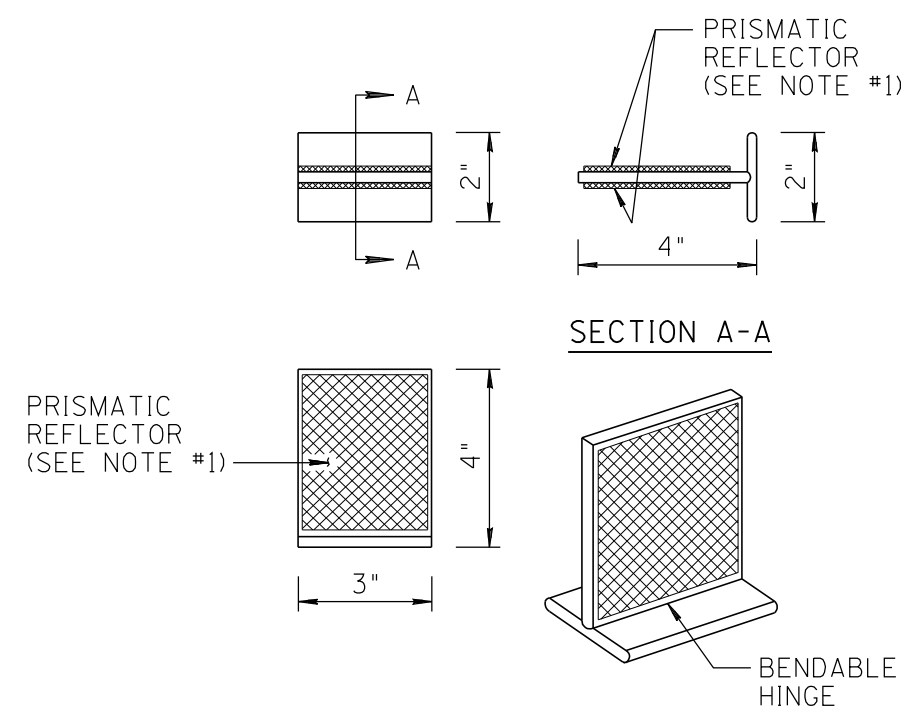
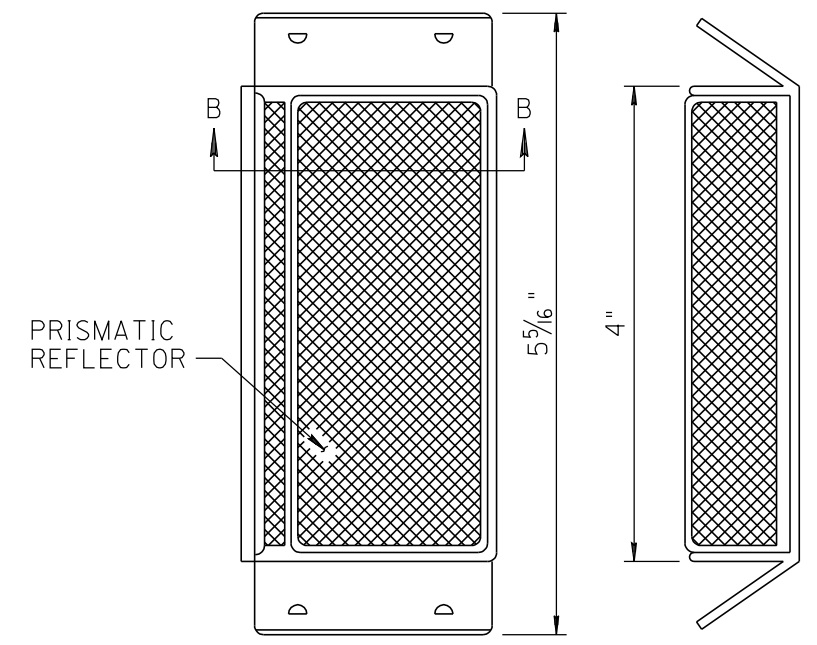
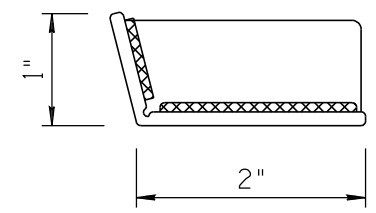


NO	DESCRIPTION OF REVISIONS	MADE BY	DATE
1	RE-ISSUE	L. LOPEZ	2/02
2	RE-DESIGN, DIMENSION CHANGES	L. LOPEZ	5/03
3			
4			



CONCRETE BARRIER MARKERS



TUBULAR THRIE BEAM BARRIER MARKERS

NOTES:

- BRIDGE AND BARRIER MARKER DESIGNATIONS SHALL BE AS FOLLOWS:
 BM-1 SINGLE FACE WHITE
 BM-2 SINGLE FACE YELLOW
 BM-3 TWO SIDED YELLOW
- BRIDGE AND BARRIER MARKERS SHALL CONFORM TO SECTION 905 OF THE STANDARD SPECIFICATIONS.
- PRISMATIC REFLECTORS SHALL BE WHITE OR YELLOW AS REQUIRED AND SHALL CONFORM TO THE REQUIRMENTS OF SECTION 1008 OF THE STANDARD SPECIFICATIONS.
- CONCRETE BARRIER MARKER SHALL BE INSTALLED USING MANUFACTURER APPROVED ADHESIVE APPLIED WITH A CAULKING GUN.
- ALL DIMENSIONS ARE APPROXIMATE.

NOT TO SCALE

DESIGN APPROVED	ARIZONA DEPARTMENT OF TRANSPORTATION INTERMODAL TRANSPORTATION DIVISION STANDARD DRAWINGS	REV.
APPROVED FOR DISTRIBUTION		5/03
BRIDGE AND BARRIER MARKER DETAILS		DRAWING NO. M-32