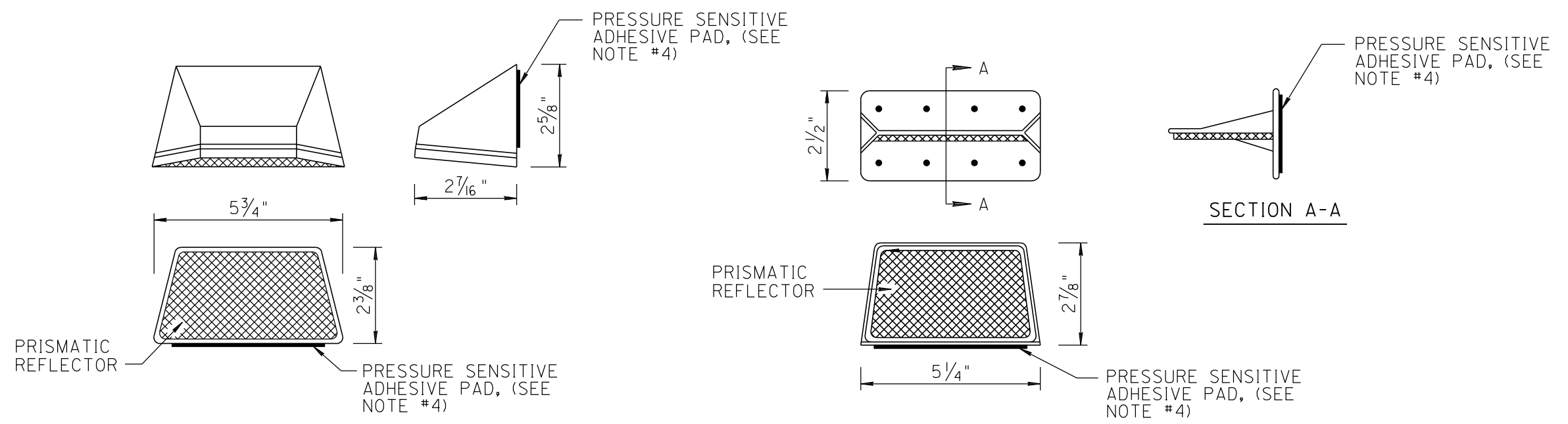
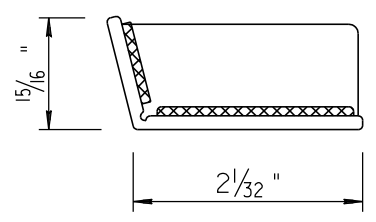


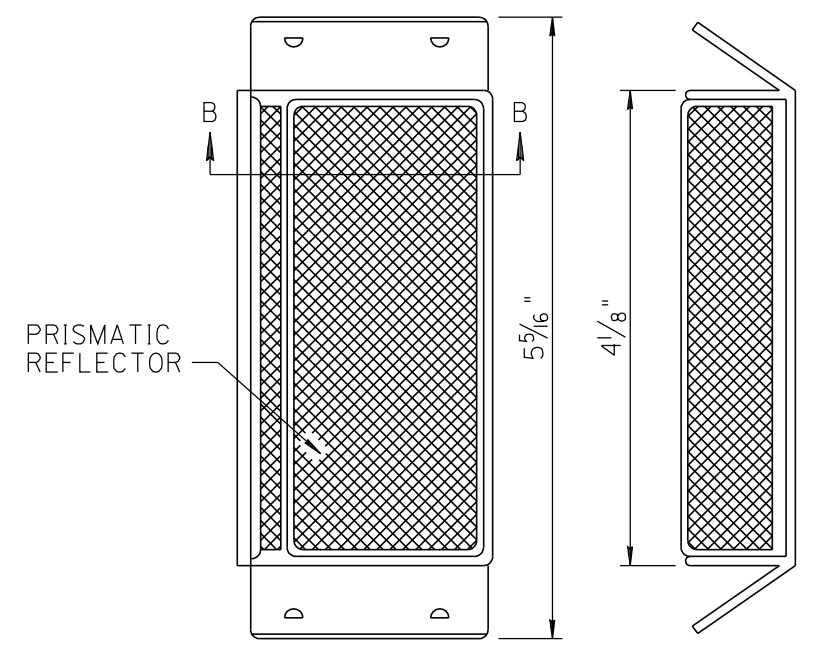
NO	DESCRIPTION OF REVISIONS	MADE BY	DATE
1	RE-ISSUE	L. LOPEZ	2/02
2			
3			
4			



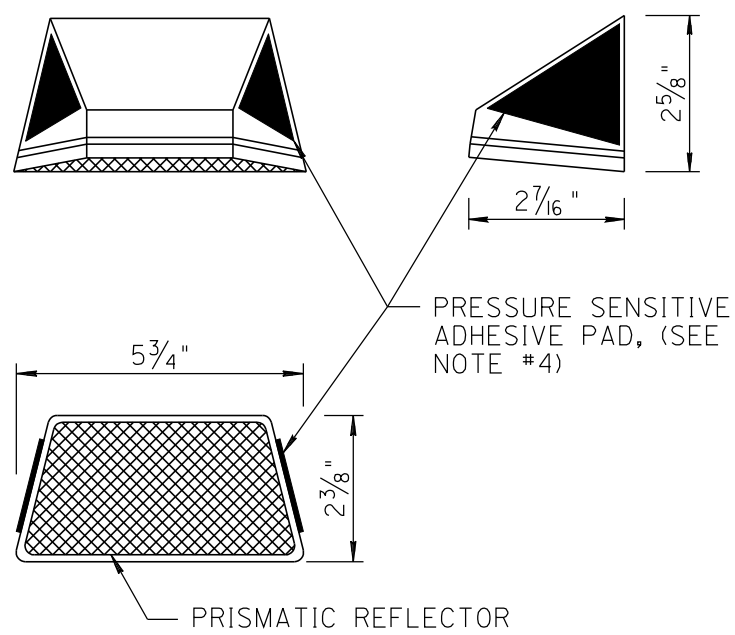
CONCRETE BARRIER MARKERS



SECTION B-B



TUBULAR THRIE BEAM BARRIER MARKERS



NOTES:

- BRIDGE AND BARRIER MARKER DESIGNATIONS SHALL BE AS FOLLOWS:
BM-1 SINGLE FACE WHITE
BM-2 SINGLE FACE YELLOW
- PRISMATIC REFLECTORS SHALL BE WHITE OR YELLOW AS REQUIRED AND SHALL CONFORM TO THE REQUIREMENTS OF SECTION 1008 OF THE STANDARD SPECIFICATIONS.
- ALL DIMENSIONS ARE NOMINAL.
- PRESSURE SENSITIVE BUTYL RUBBER ADHESIVE PAD IS SHOWN. ALTERNATE METHODS OF ATTACHING THE BARRIER MARKER SUCH AS THE MANUFACTURER'S APPROVED ADHESIVE APPLIED WITH A CAULKING GUN IS ACCEPTABLE.

NOT TO SCALE

DESIGN APPROVED	ARIZONA DEPARTMENT OF TRANSPORTATION INTERMODAL TRANSPORTATION DIVISION STANDARD DRAWINGS	REV.
APPROVED FOR DISTRIBUTION		2/02
BRIDGE AND BARRIER MARKER DETAILS		DRAWING NO. M-32