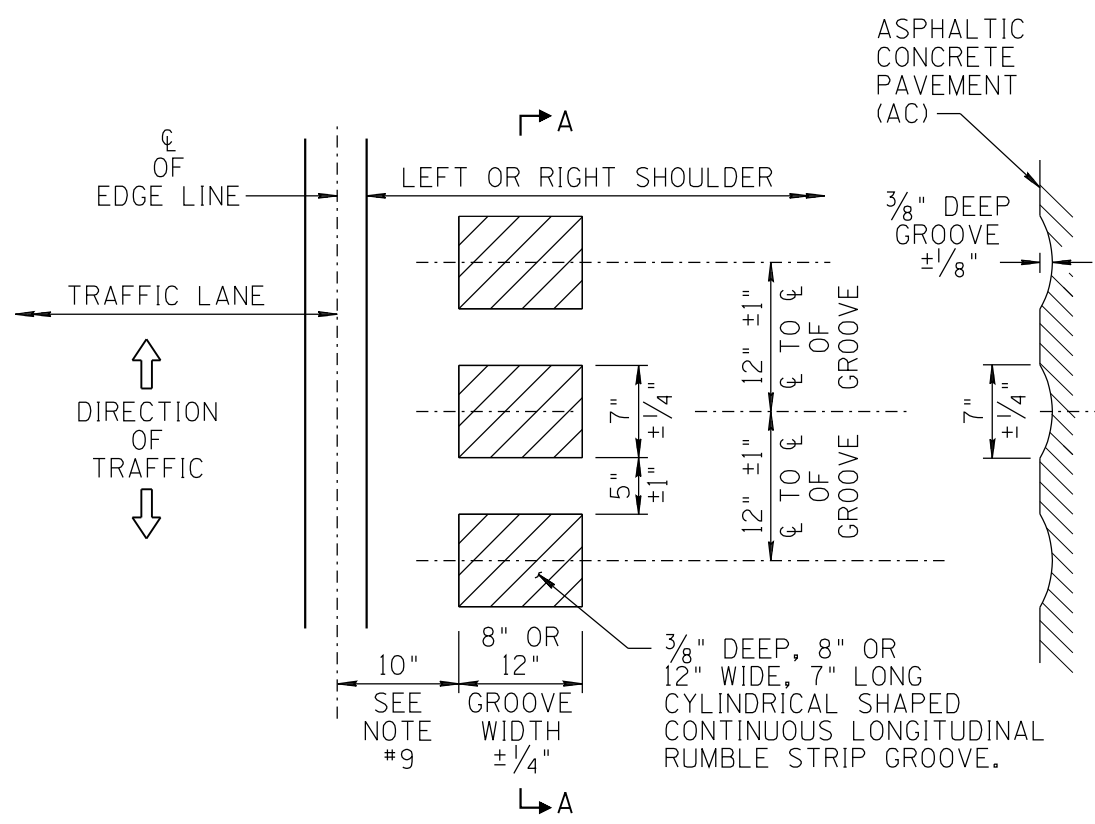
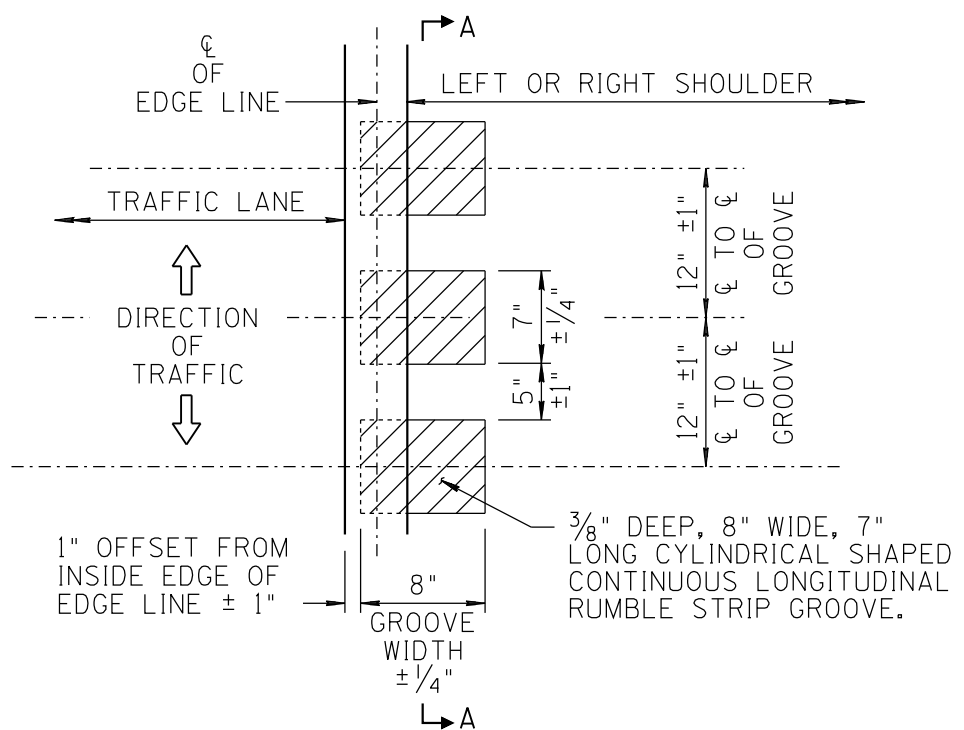


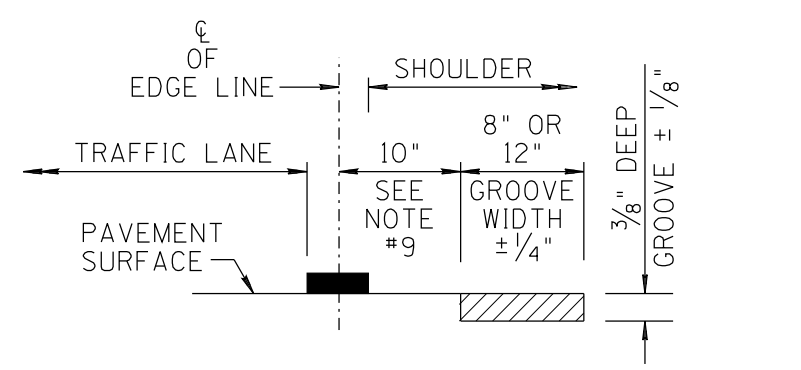
NO	DESCRIPTION OF REVISIONS	MADE BY	DATE
1	RE-ISSUE	L. LOPEZ	2/02
2	CALLOUT EDITS.	L. LOPEZ	5/03
3	CALLOUT EDITS.	L. LOPEZ	8/07
4	CALLOUT EDITS.	L. LOPEZ	9/08



PLAN VIEW

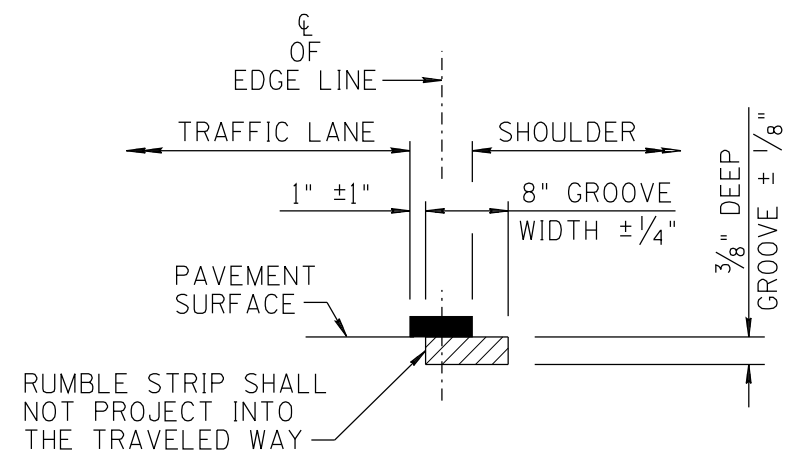


PLAN VIEW



TYPICAL LONGITUDINAL RUMBLE STRIP LOCATION
8" OR 12" WIDE STRIP WITH OFFSET

PROFILE VIEW



TYPICAL LONGITUDINAL RUMBLE STRIP LOCATION
8" WIDE STRIP IN EDGE LINE (GUIDELINE)

PROFILE VIEW

GENERAL NOTES:

1. PLANS SHALL IDENTIFY SPECIFIC RUMBLE STRIP CONFIGURATIONS FOR THE PROJECT.
2. THE LOCATION OF THE EDGE LINE AND LONGITUDINAL RUMBLE STRIP CAN VARY WITHIN STATED TOLERANCES. HOWEVER, THE RUMBLE STRIP SHALL NOT BE LOCATED WITHIN THE TRAFFIC LANE.
3. THE LONGITUDINAL RUMBLE STRIP GROOVE AND PATTERN SHALL BE CONSTRUCTED BY MILLING OR GRINDING THE INDENTATIONS IN THE ASPHALTIC CONCRETE PAVEMENT.
4. THE GRINDING MACHINE SHALL BE EQUIPPED WITH AN ACCEPTABLE GUIDE THAT ALLOWS THE STRIP TO BE INSTALLED TO THE PROPER ALIGNMENT WITHIN ACCEPTABLE TOLERANCES.
5. IF THE RUMBLE STRIP AND EDGE LINE ARE TO BE INSTALLED AT THE SAME LOCATION, THEN THE RUMBLE STRIP IS TO BE INSTALLED PRIOR TO THE PLACEMENT OF THE PERMANENT EDGE LINE.
6. TO ENSURE PROPER RUMBLE STRIP LOCATION, A TEMPORARY PAINT EDGE LINE SHALL BE INSTALLED AT THE PERMANENT LOCATION PRIOR TO THE INSTALLATION OF THE GROUND-IN RUMBLE STRIP. THE RUMBLE STRIP SHALL FOLLOW THE LOCATION OF THE EDGE LINE.
7. THE RADIUS AND CONFIGURATION OF THE CUTTING/MILLING DRUM AND MACHINE SHALL BE ABLE TO PRODUCE A SMOOTH AND CONSISTENT GROOVE TO THE REQUIREMENTS OF THESE SPECIFICATIONS.
8. IF SHOULDERS ARE LESS THAN FOUR FEET WIDE AND THE ELEVATION OF THE ROADWAY IS BELOW 4000 FEET, THEN THE SUBSTITUTION OF A PROFILE THERMOPLASTIC EDGE LINE MARKING, IN LIEU OF A RUMBLE STRIP, MAY BE CONSIDERED FOR ACCOMMODATING BICYCLE TRAFFIC.
9. IF THE LEFT SHOULDER ON A DIVIDED HIGHWAY IS MORE THAN TWO FEET WIDE, BUT LESS THAN FOUR FEET WIDE, THE RUMBLE STRIP CAN BE OFFSET FOUR INCHES FROM OUTSIDE EDGE OF EDGE LINE.
10. LONGITUDINAL RUMBLE STRIPS SHALL NOT BE PLACED ON CONSTRUCTION JOINTS OR UN-EVEN SURFACE TREATMENTS ($\pm 1/4$ INCH).

DESIGN APPROVED	ARIZONA DEPARTMENT OF TRANSPORTATION INTERMODAL TRANSPORTATION DIVISION STANDARD DRAWINGS	REV. 9/08
APPROVED FOR DISTRIBUTION ARCHIVED	CONTINUOUS LONGITUDINAL RUMBLE STRIP GROOVE, PATTERN AND LOCATION DETAILS	DRAWING NO. M-22