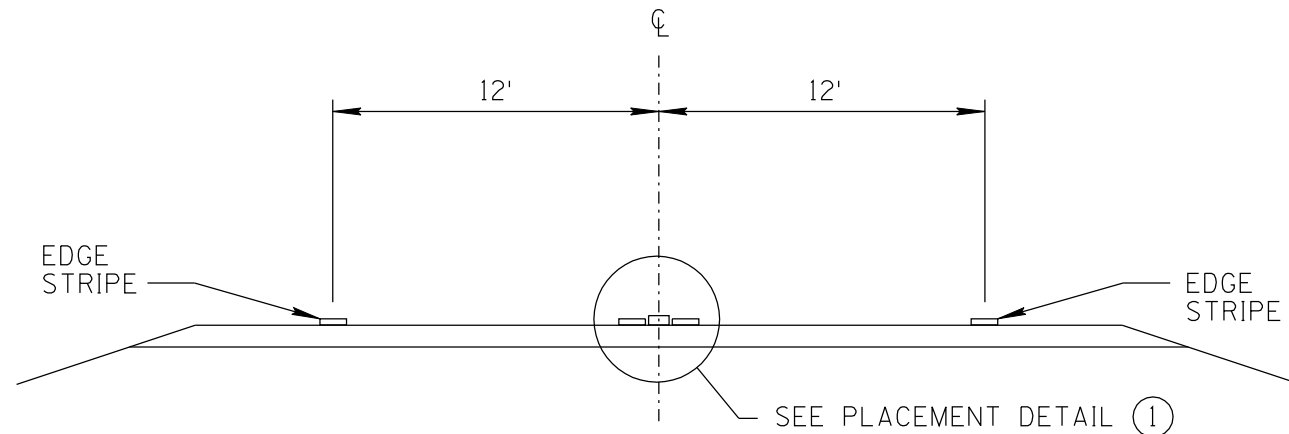
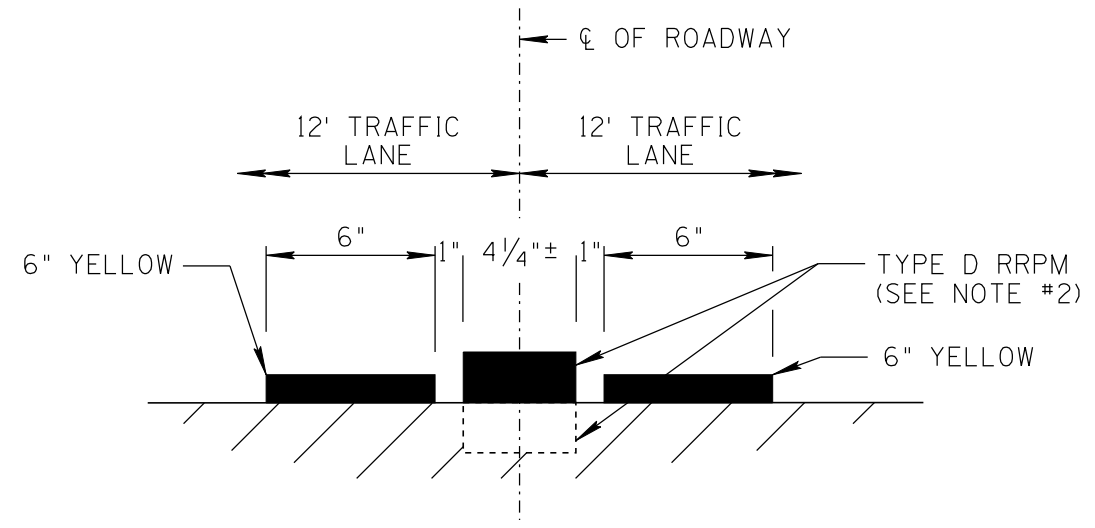


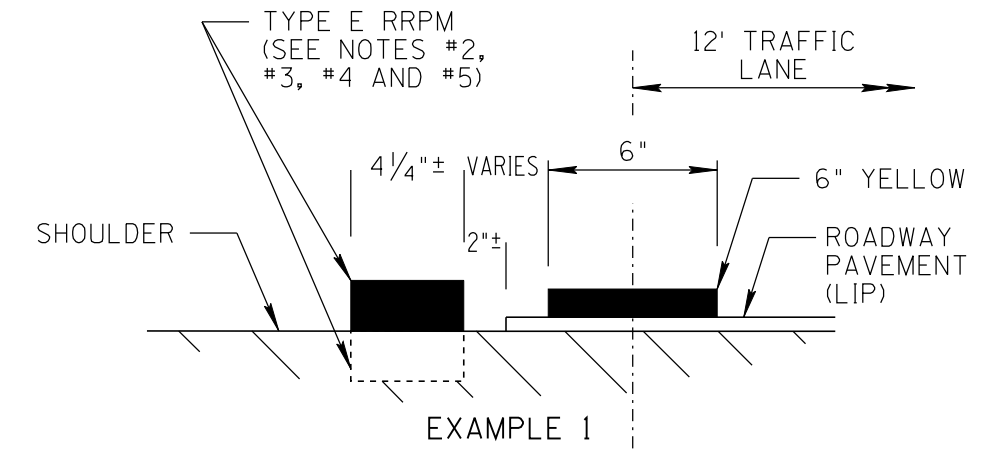
NO	DESCRIPTION OF REVISIONS	MADE BY	DATE
1	RE-ISSUE	L. LOPEZ	2/02
2	ADDED PLACEMENT DETAIL 3	L. LOPEZ	6/08
3			
4			



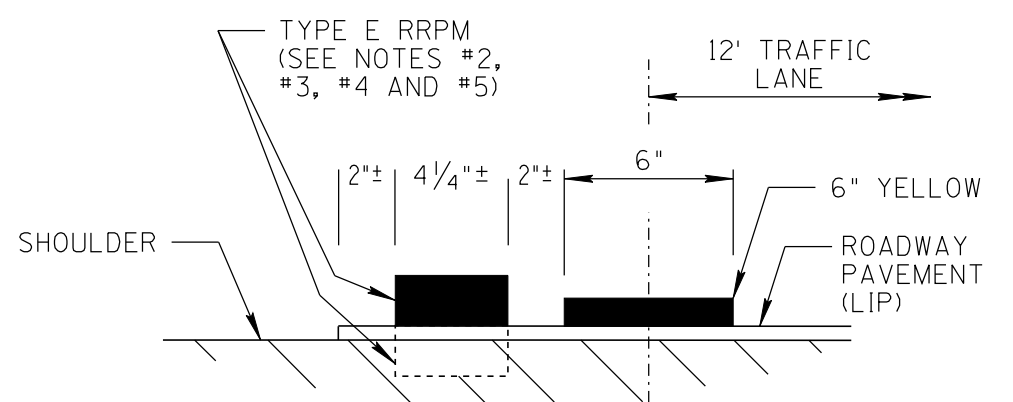
TYPICAL CROSS-SECTION



PLACEMENT DETAIL 1



EXAMPLE 1



EXAMPLE 2

PLACEMENT DETAIL 2

ONE WAY  
FREEWAY TRAFFIC ONLY  
SEE NOTES

NOTES:

1. ALL ROADWAYS SHOWN ARE 2-WAY UNLESS OTHERWISE NOTED.
2. APPLICABLE TO BOTH RAISED AND RECESSED PAVEMENT MARKERS.
3. PLACEMENT OF TYPE E (EDGELINE) RETROREFLECTIVE PAVEMENT MARKERS SHALL BE UNIFORM AND PARALLEL TO THE EDGE STRIPE BETWEEN THE LIP OF PAVEMENT AND RUMBLE STRIP. SEE PLACEMENT DETAIL 2 ON THIS SHEET. PAVEMENT MARKERS CAN BE INSTALLED IN THE RUMBLE STRIP IF NECESSARY.
4. SEE STANDARD DRAWING M-18 FOR RECESSED APPLICATIONS.
5. TYPE E PAVEMENT MARKERS ARE TO BE PLACED A MINIMUM OF TWO INCHES CLEAR FROM THE LIP OF THE PAVEMENT ON EITHER SIDE.

SHEET 10 OF 10  
NOT TO SCALE

DESIGN APPROVED	ARIZONA DEPARTMENT OF TRANSPORTATION INTERMODAL TRANSPORTATION DIVISION STANDARD DRAWINGS	REV.
<b>ARCHIVED</b>		6/08
APPROVED FOR DISTRIBUTION	PAVEMENT MARKING CROSS-SECTION DETAILS FOR HIGHWAYS AND FREEWAYS	DRAWING NO. M-19