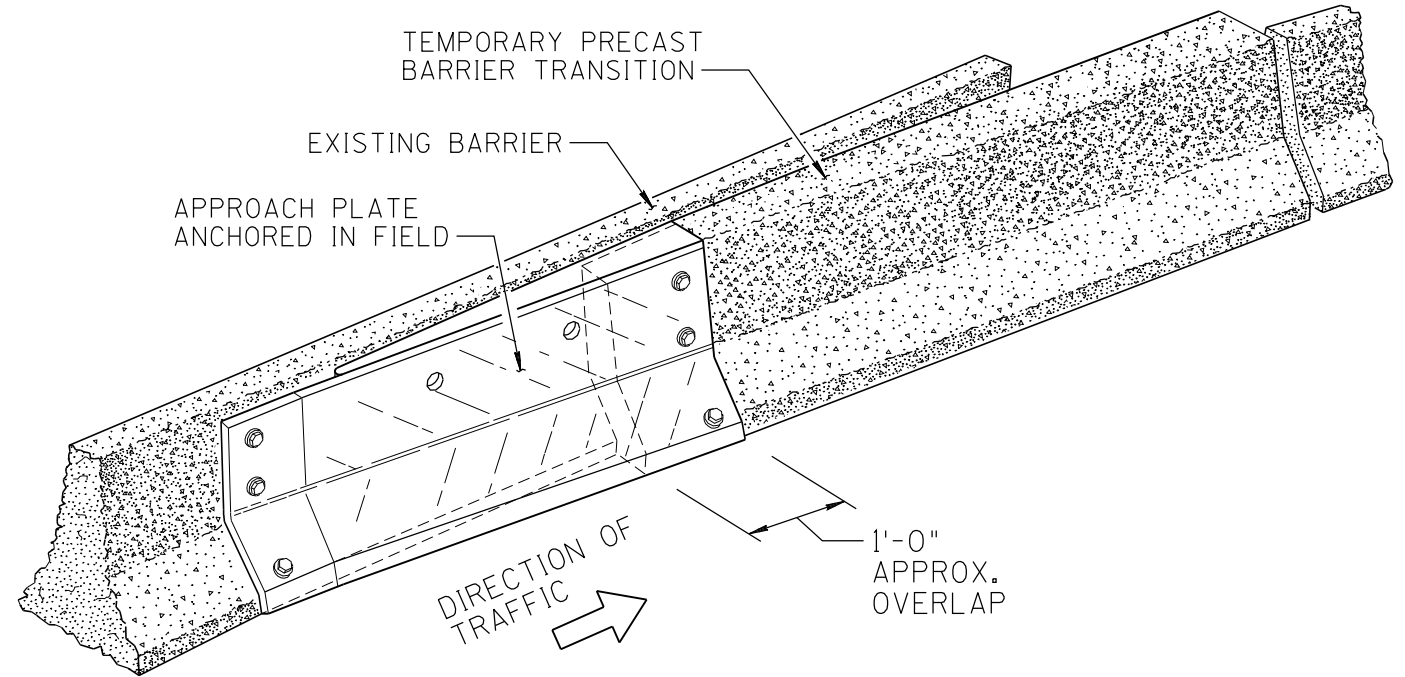
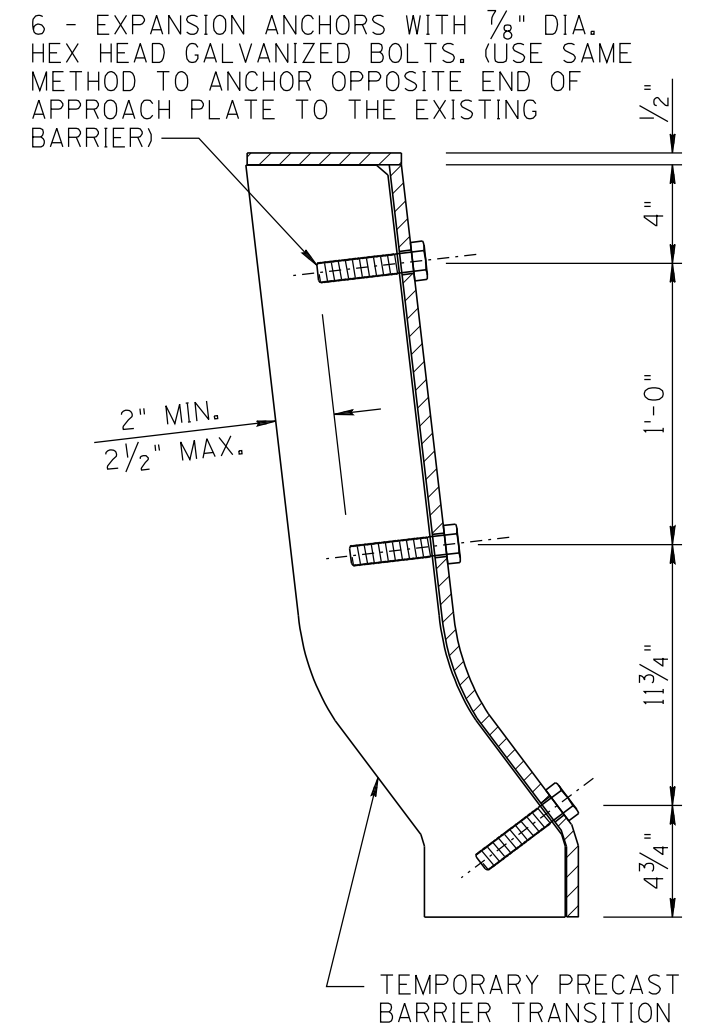
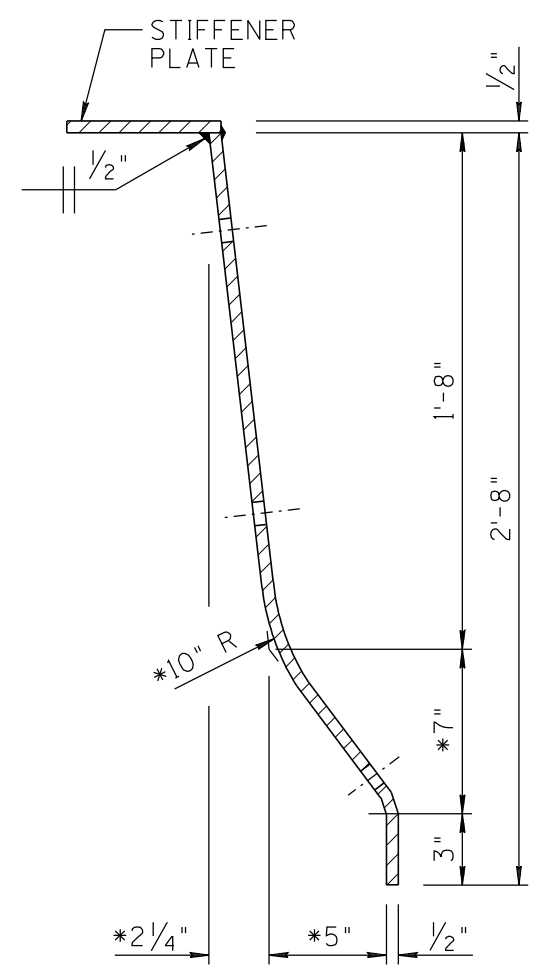
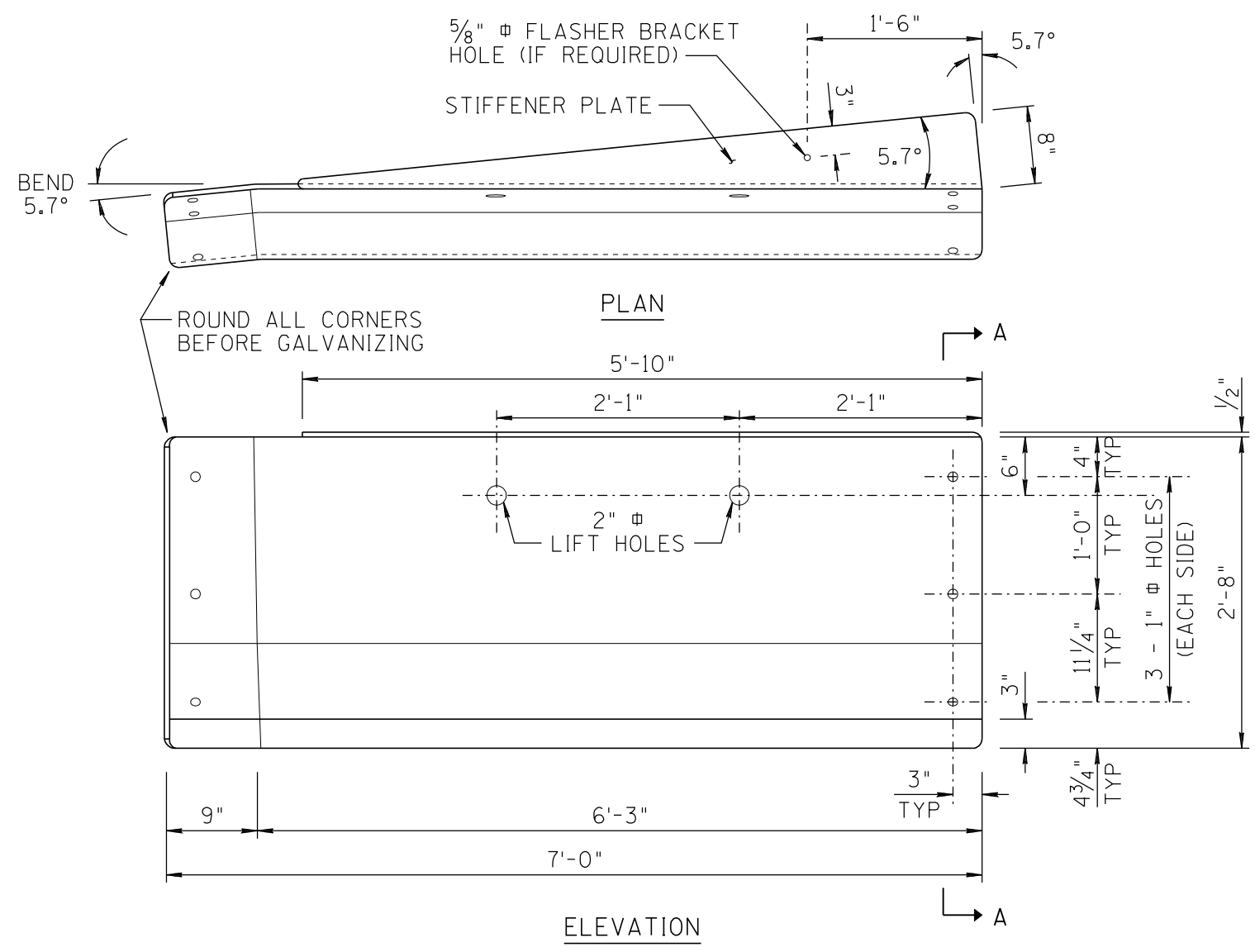


NO	DESCRIPTION OF REVISIONS	MADE BY	DATE
1	NEW ISSUE	L. LOPEZ	10/02
2			
3			
4			



- NOTES:**
1. THE APPROACH PLATE SHALL BE 1/2" THICK STEEL FABRICATED TO CONFIGURATION SHOWN.
 2. STRUCTURAL STEEL SHALL BE ASTM A123 AND GALVANIZED AFTER BENDING OR WELDING.
 3. SEE STANDARD DRAWING C-5 SHEET 1 OF 2 FOR DETAILS OF PRECAST TEMPORARY CONCRETE TRAFFIC BARRIER TRANSITION LEFT SIDE APPROACH.
 4. WHEN THE APPROACH PLATE IS REMOVED THE HOLES IN EXISTING BARRIER SHALL BE GROUTED.
 - *5. DIMENSIONS ARE TO THE INTERSECTION POINT OF THE PLATE SLOPES. CONSTRUCT THE 10 INCH RADIUS TO PROVIDE A SMOOTH TRANSITION BETWEEN THE SLOPES.

SHEET 2 OF 2
NOT TO SCALE

DESIGN APPROVED	ARIZONA DEPARTMENT OF TRANSPORTATION INTERMODAL TRANSPORTATION DIVISION STANDARD DRAWINGS	REV. 10/02
APPROVED FOR DISTRIBUTION		DRAWING NO. C-5