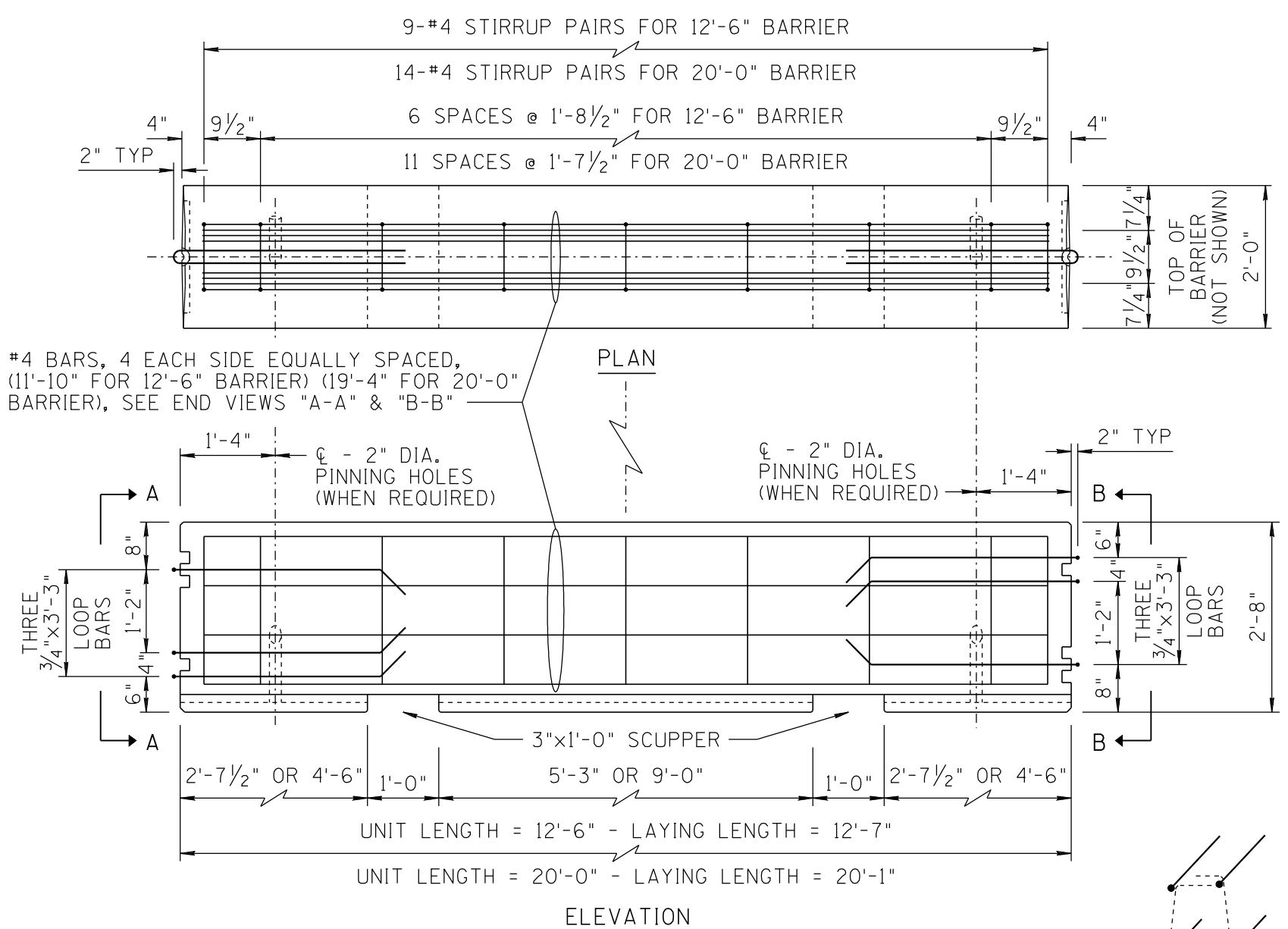
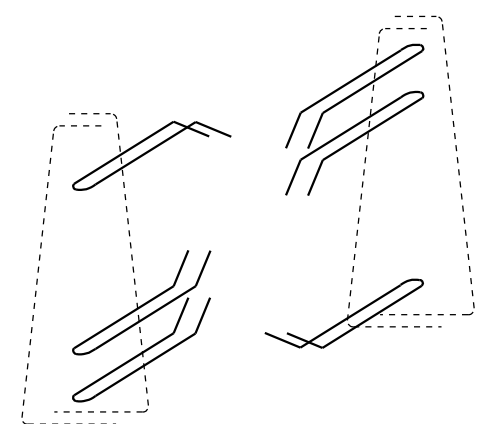


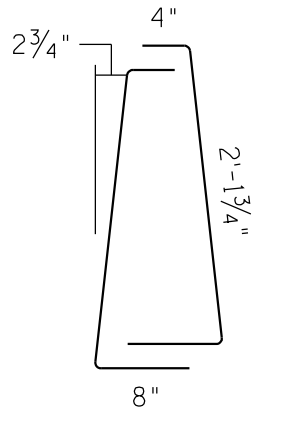
NO	DESCRIPTION OF REVISIONS	MADE BY	DATE
1	RE-ISSUE	L. LOPEZ	2/02
2	LOOP BAR AND SLOT (2") DIMENSION ADDED.	L. LOPEZ	3/03
3	DELETED SHEET #3 (OLD BARRIER).	L. LOPEZ	12/06
4			



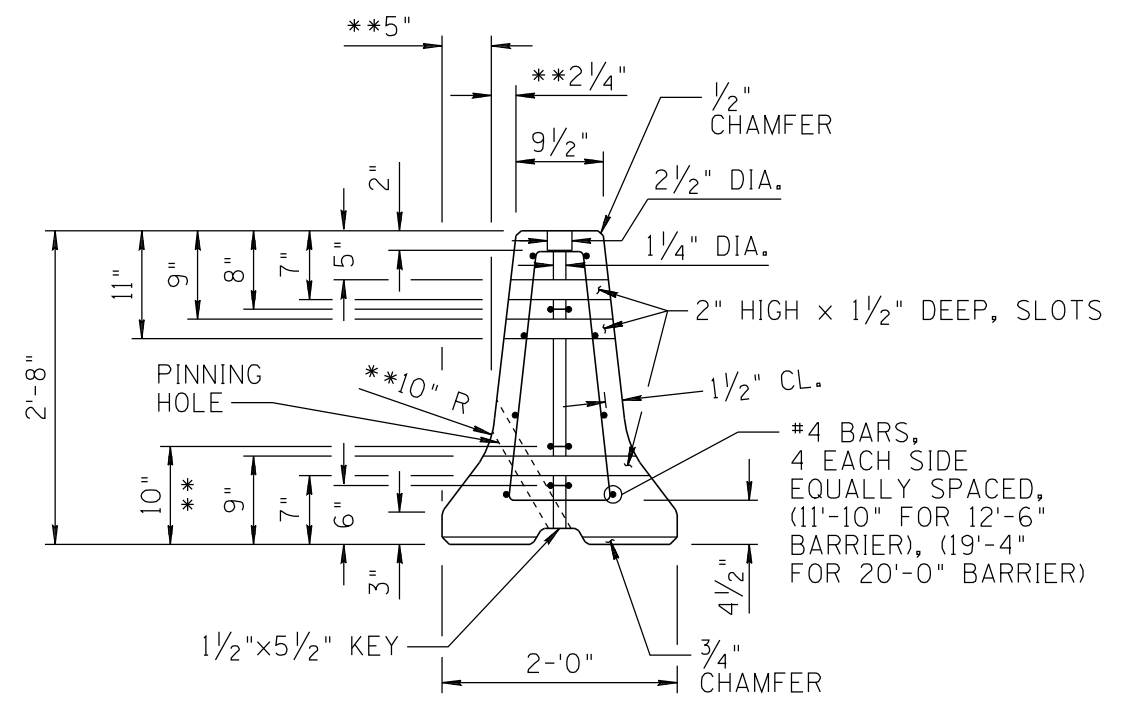
#4 BARS, 4 EACH SIDE EQUALLY SPACED, (11'-10" FOR 12'-6" BARRIER) (19'-4" FOR 20'-0" BARRIER), SEE END VIEWS "A-A" & "B-B"



**LOOP BAR**  
A-36 (ASTM A-709, HPS 70W, S84, ZONE 2) HOT-DIP GALVANIZED AFTER FABRICATION

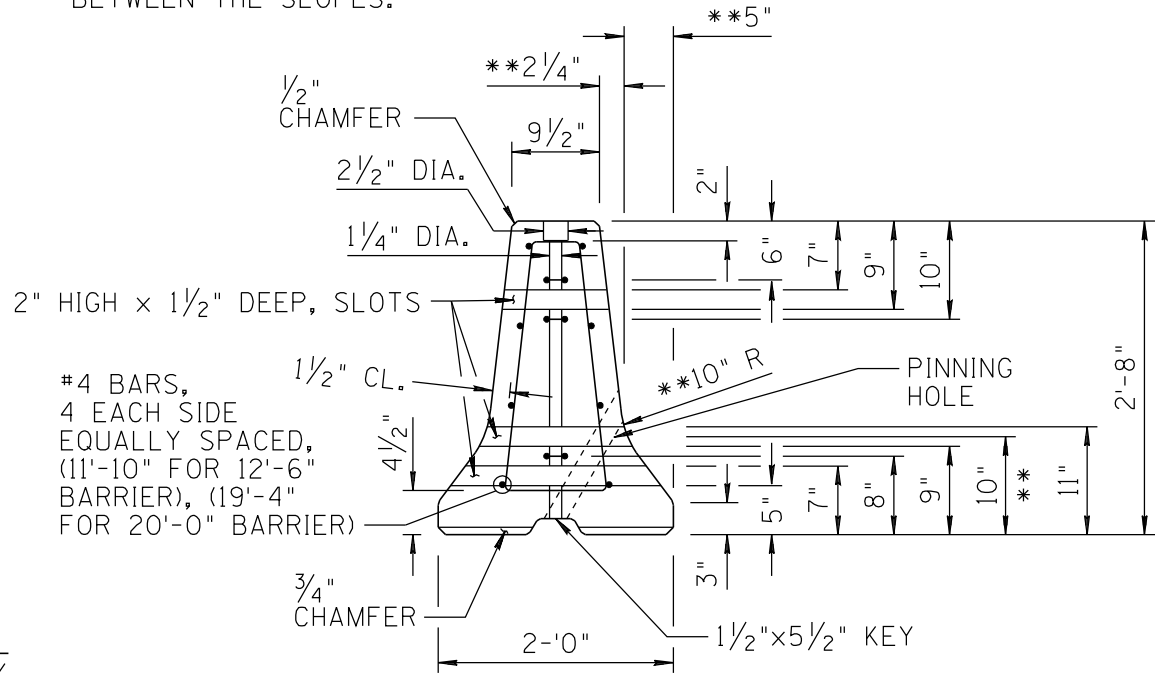


**#4 STIRRUP PAIRS**



**END VIEW A-A**  
SEE SHEET 2 OF 2 FOR PINNING HOLE DETAILS

\*\* DIMENSIONS ARE TO THE INTERSECTION POINT OF THE BARRIER SLOPES. CONSTRUCT THE 10 INCH RADIUS TO PROVIDE A SMOOTH TRANSITION BETWEEN THE SLOPES.



**END VIEW B-B**  
SEE SHEET 2 OF 2 FOR PINNING HOLE DETAILS

DESIGN APPROVED <b>APPROVED FOR DISTRIBUTION</b>	ARIZONA DEPARTMENT OF TRANSPORTATION INTERMODAL TRANSPORTATION DIVISION STANDARD DRAWINGS	REV. 12/06
	PRECAST CONCRETE BARRIER PIN AND LOOP ASSEMBLY NCHRP 350 APPROVED DESIGN	DRAWING NO. C-3

SHEET 1 OF 2  
NOT TO SCALE